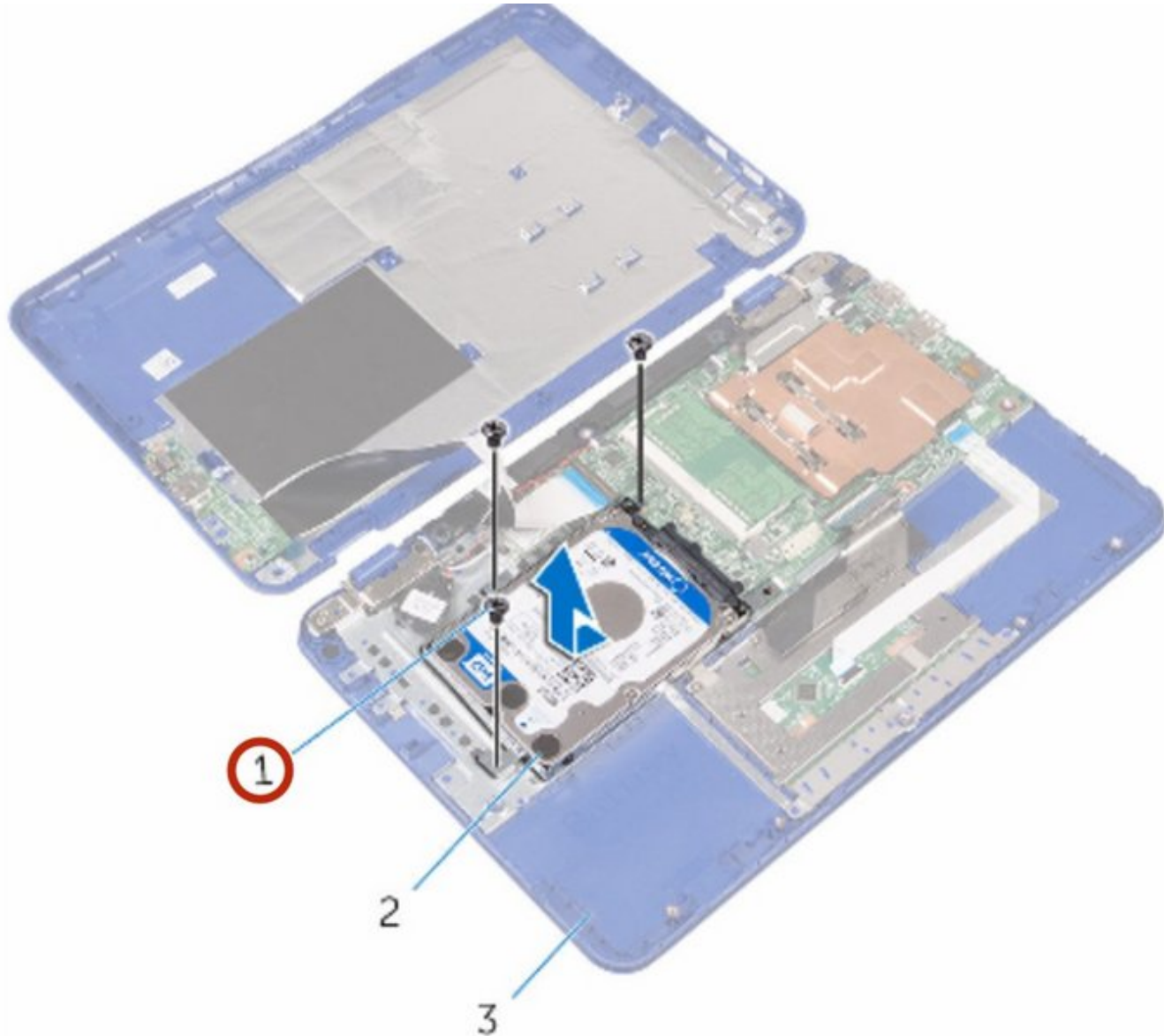




Dell Inspiron 11-3162 Hard Drive Replacement

Written By: Terrence15



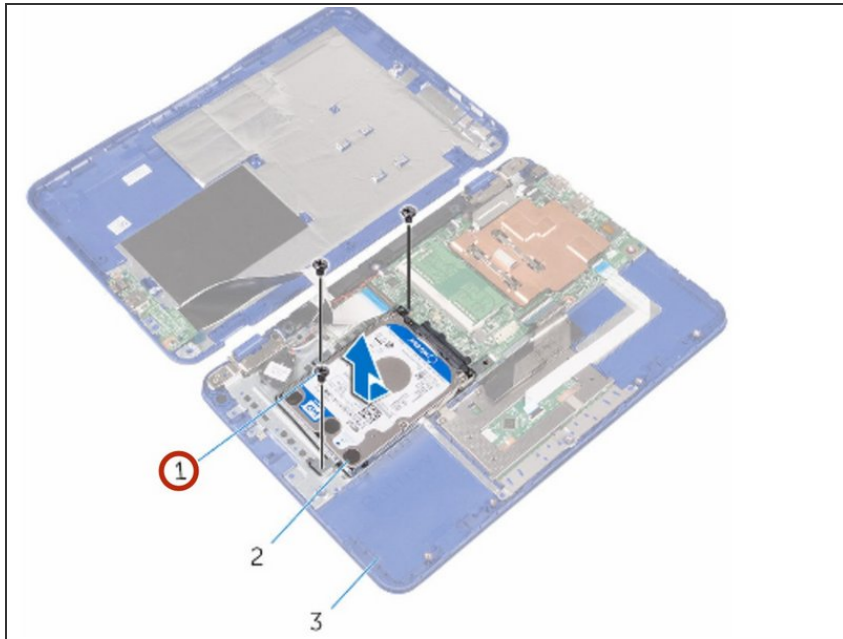
INTRODUCTION

In this guide, we will show you how to remove and replace the Hard drive.

TOOLS:

- [Phillips #0 Screwdriver](#) (1)
-

Step 1 — Remove the Screws

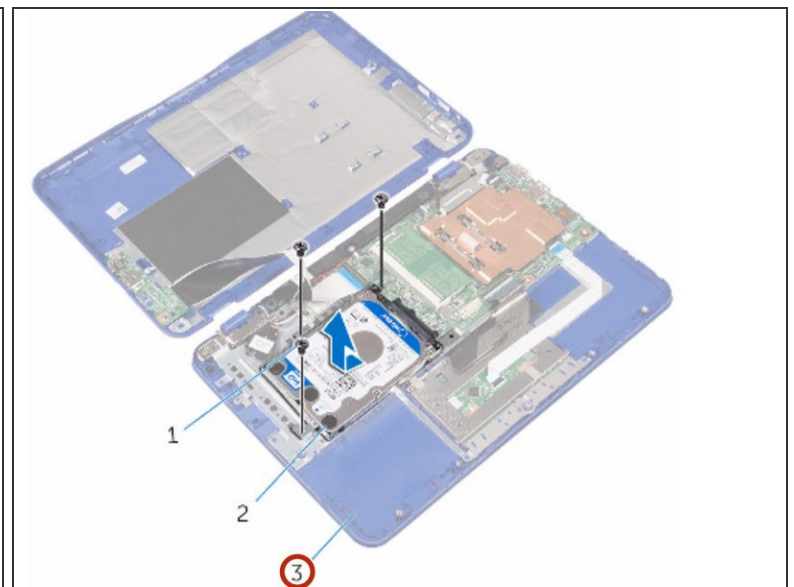
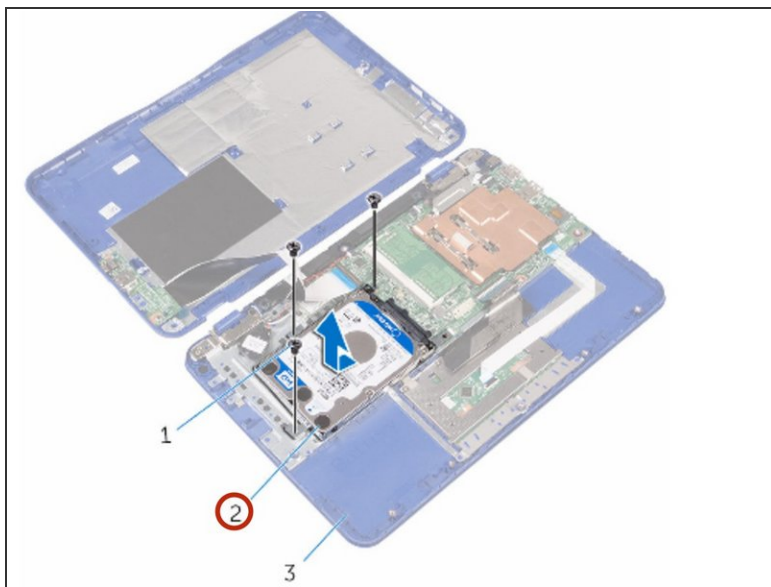


⚠ WARNING: Before working inside your computer, read the safety information that shipped with your computer and follow the steps in [Before working inside your computer](#). After working inside your computer, follow the instructions in [After working inside your computer](#).

⚠ CAUTION: Hard drives are fragile. Exercise care when handling the hard drive.

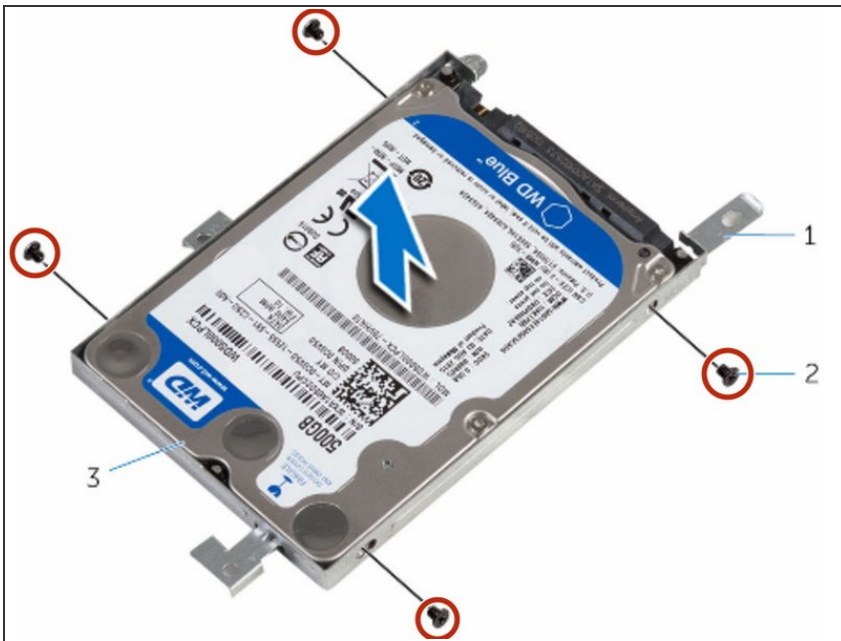
- Remove the screws that secure the hard-drive assembly to the palm rest and keyboard assembly.

Step 2 — Slide and Lift the Hard-Drive



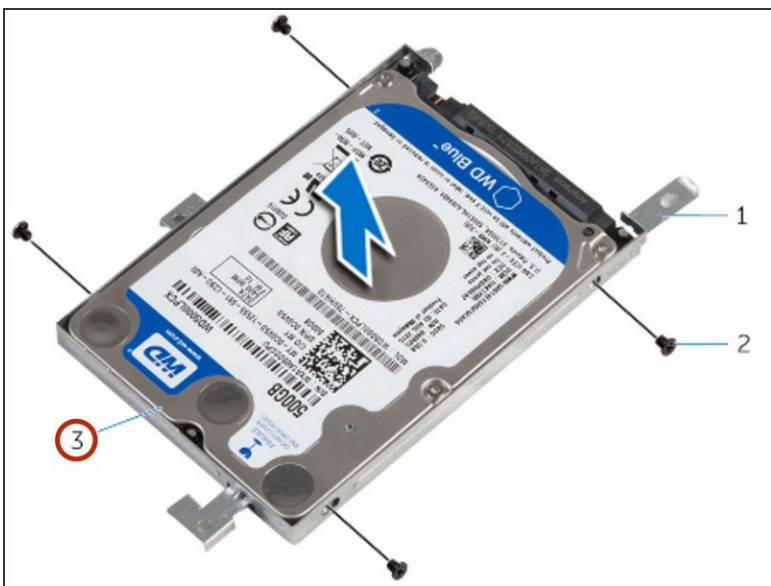
- Slide and lift the hard-drive assembly off the palm rest and keyboard assembly.

Step 3 — Remove the Screws



- Remove the screws that secure the hard-drive bracket to the hard drive.

Step 4 — Lifting the Hard Drive



- Lift the hard drive from the hard-drive bracket.

Step 5 — Align the Screw Holes



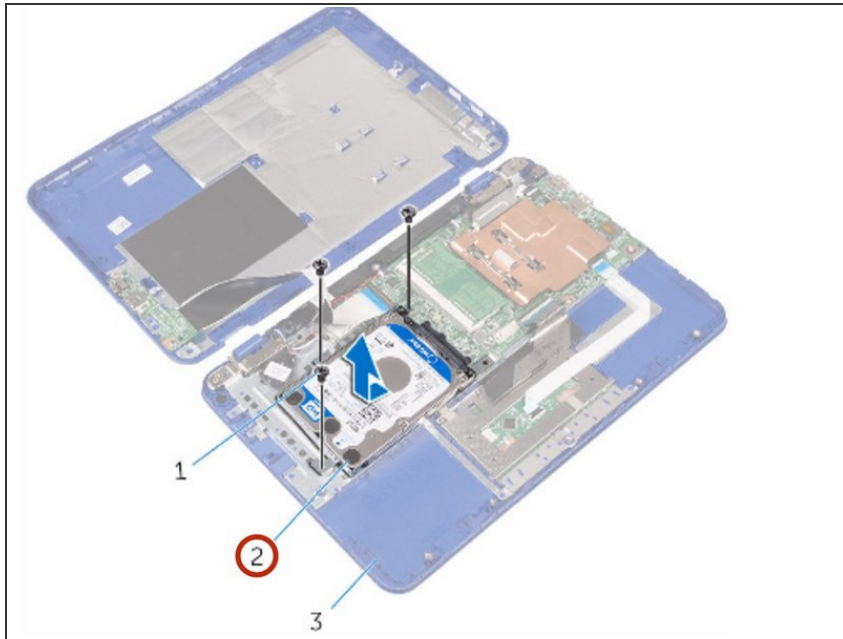
- Align the screw holes on the hard drive with the screw holes on the hard-drive bracket.

Step 6 — Replace the Screws



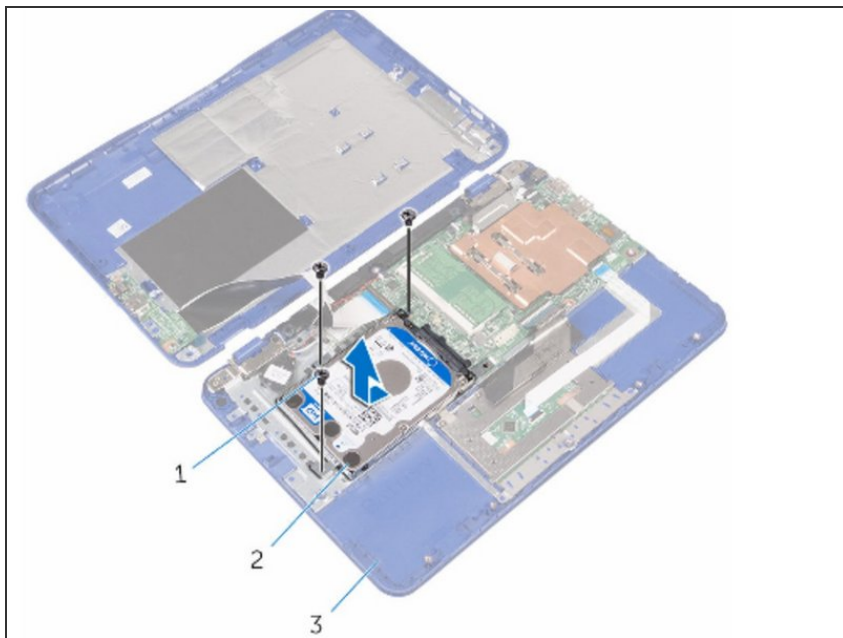
- Replace the screws that secure the hard-drive bracket to the hard drive.

Step 7 — Connecting the Hard Drive



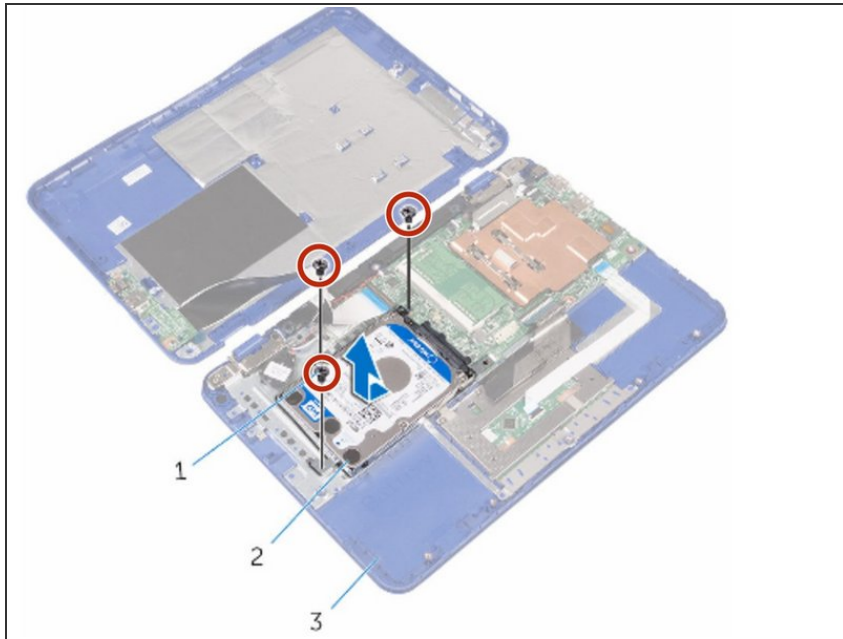
- Slide and connect the hard-drive assembly to the connector on the system board.

Step 8 — Align the Screw Holes



- Align the screw holes on the hard-drive assembly with the screw holes on the palm rest and keyboard assembly

Step 9 — Replace the Screws



- Replace the screws that secure the hard-drive assembly to the palm rest and keyboard assembly.

To reassemble your device, follow these instructions in reverse order.

This document was last generated on 2019-07-18 10:48:17 PM.