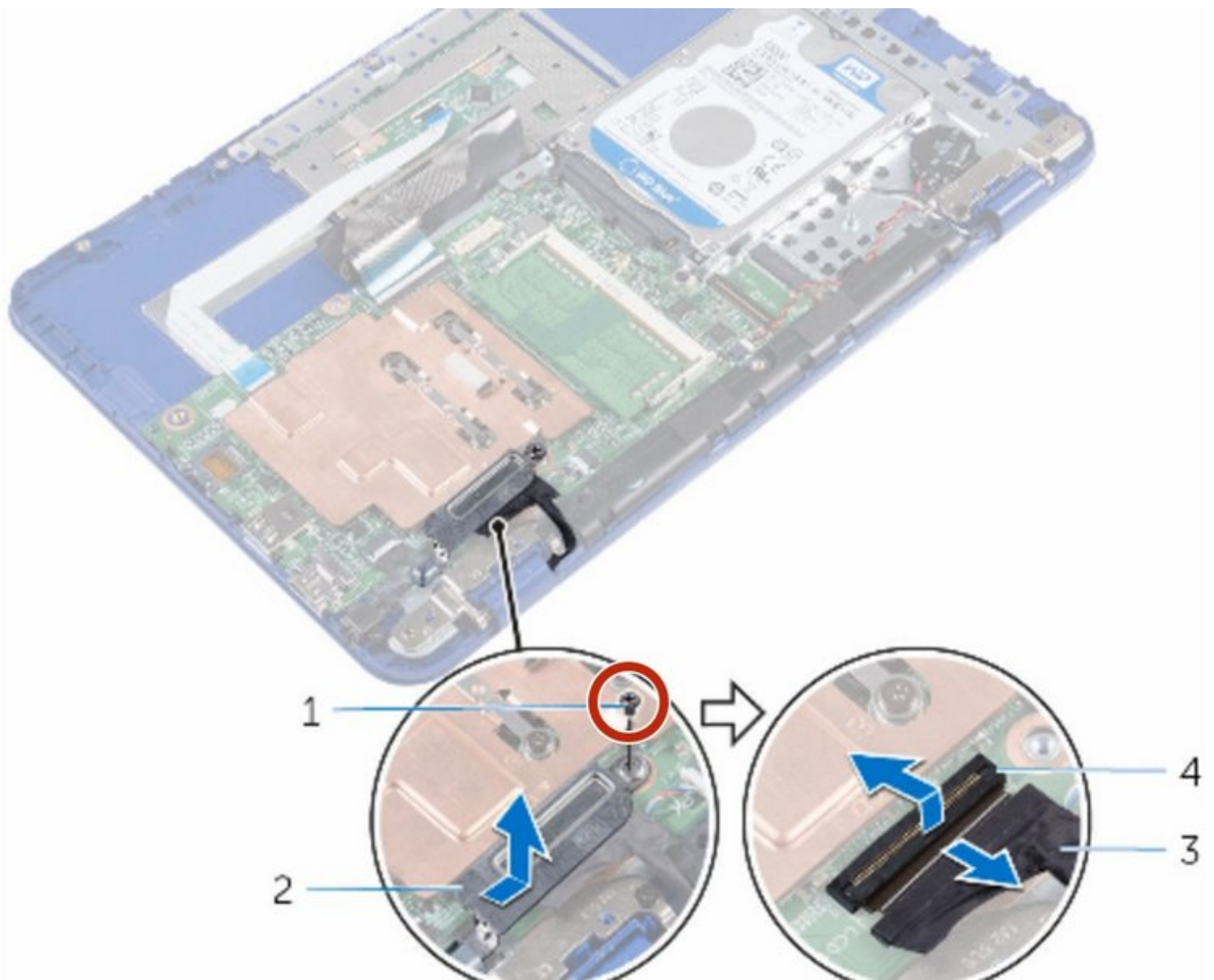




# Dell Inspiron 11-3162 Display Assembly Replacement

Written By: Terrence15



---

## INTRODUCTION

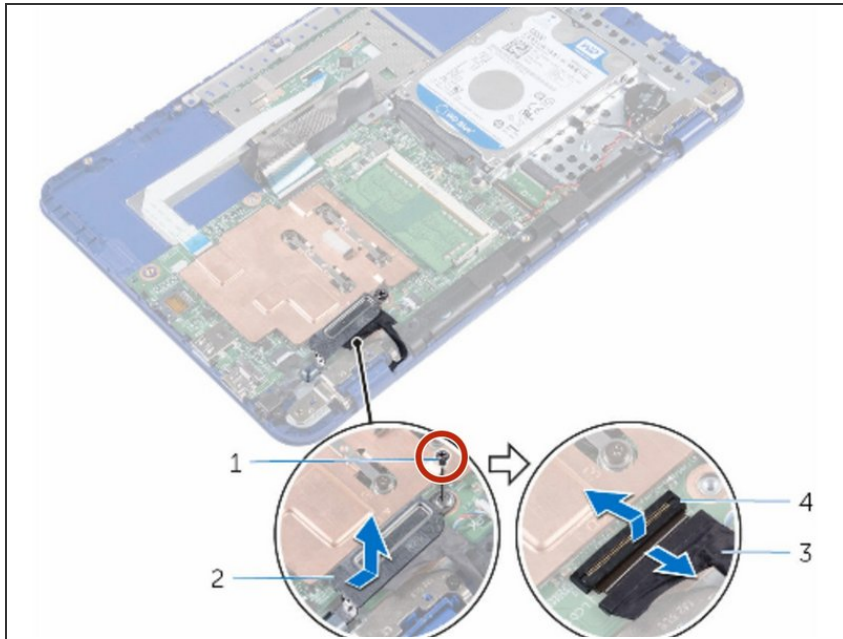
In this guide, we will show you how to remove and replace the Display Assembly.

---

### TOOLS:

- [Phillips #0 Screwdriver](#) (1)
-

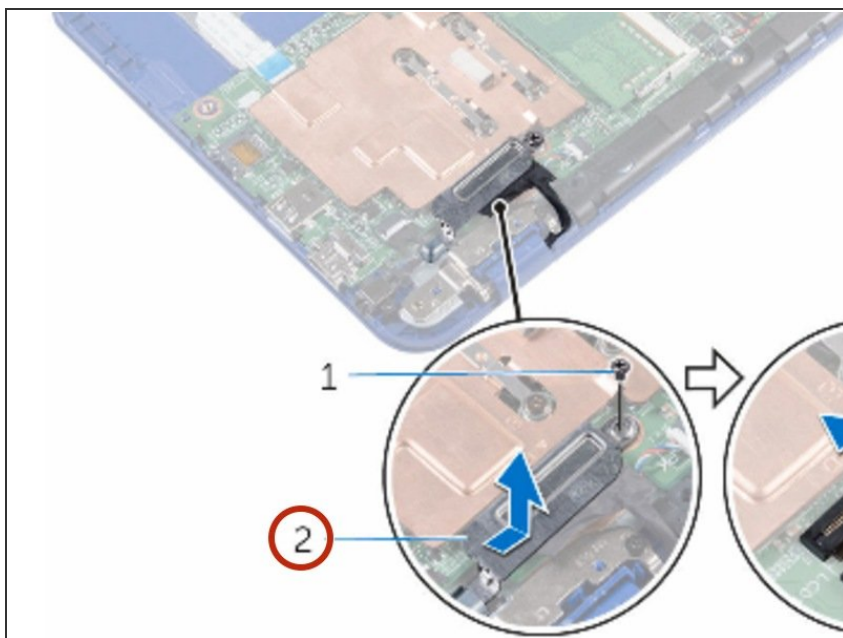
## Step 1 — Remove the Screw



**⚠ WARNING:** Before working inside your computer, read the safety information that shipped with your computer and follow the steps in [Before working inside your computer](#). After working inside your computer, follow the instructions in [After working inside your computer](#).

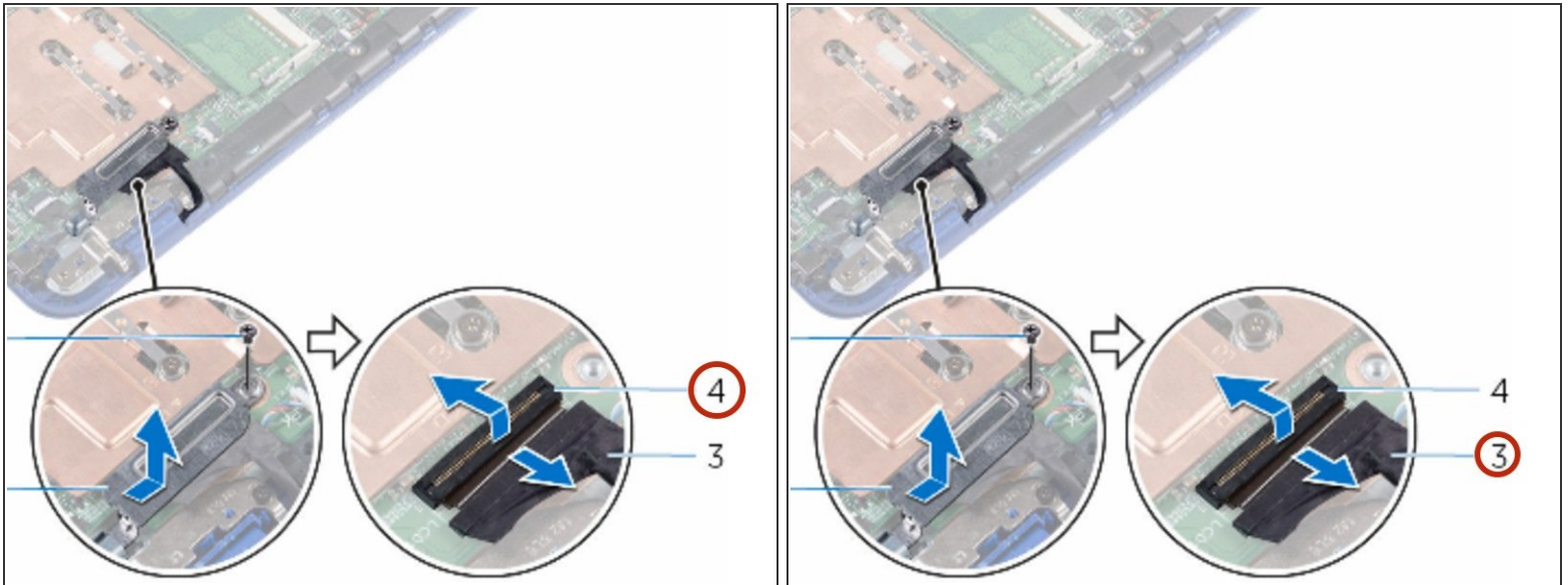
- Remove the screw that secures the display-cable bracket to the system board.

## Step 2 — Lifting the Display Cable



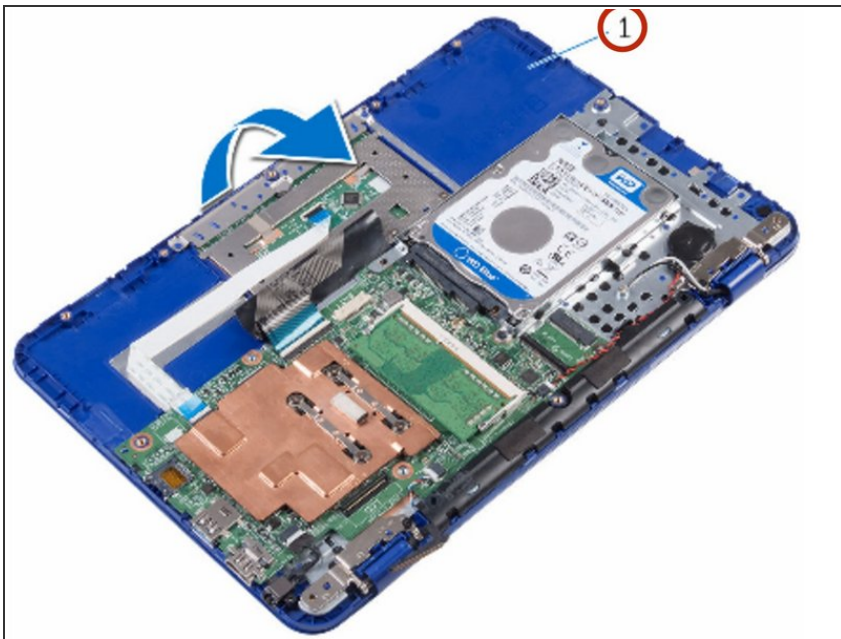
- Slide and lift the display-cable bracket off the system board.

### Step 3 — Open the Latch



- Open the latch and disconnect the display cable from the system board.

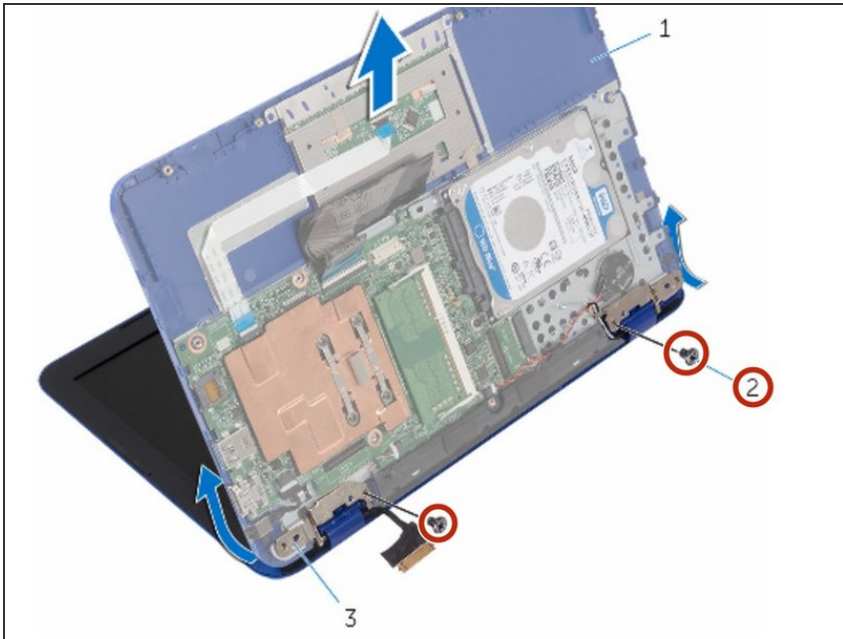
### Step 4 — Open the Palm Rest



- Open the palm rest and keyboard assembly at an angle.

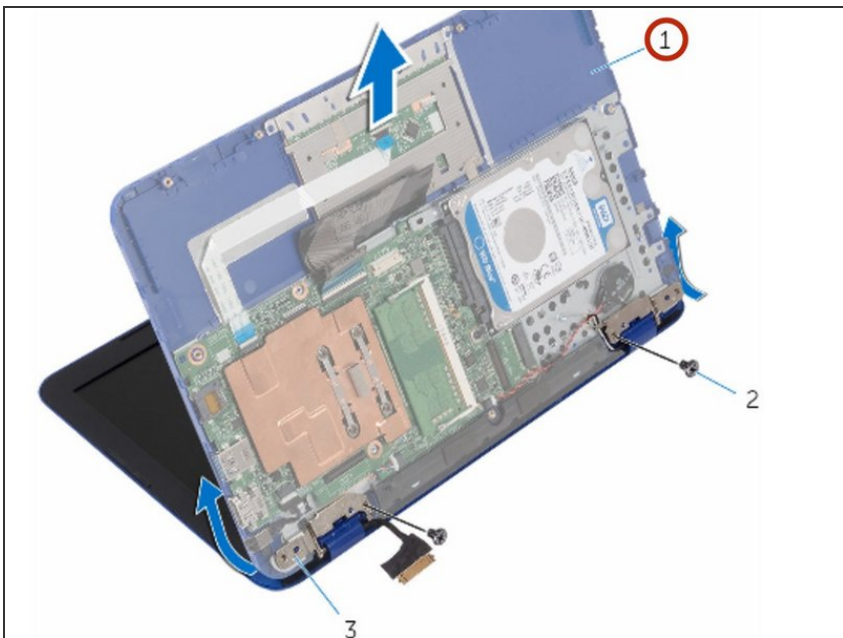


## Step 5 — Remove the Screws



- Remove the screws that secure the display assembly to the palm rest and keyboard assembly.

## Step 6 — Lifting the Assemblies



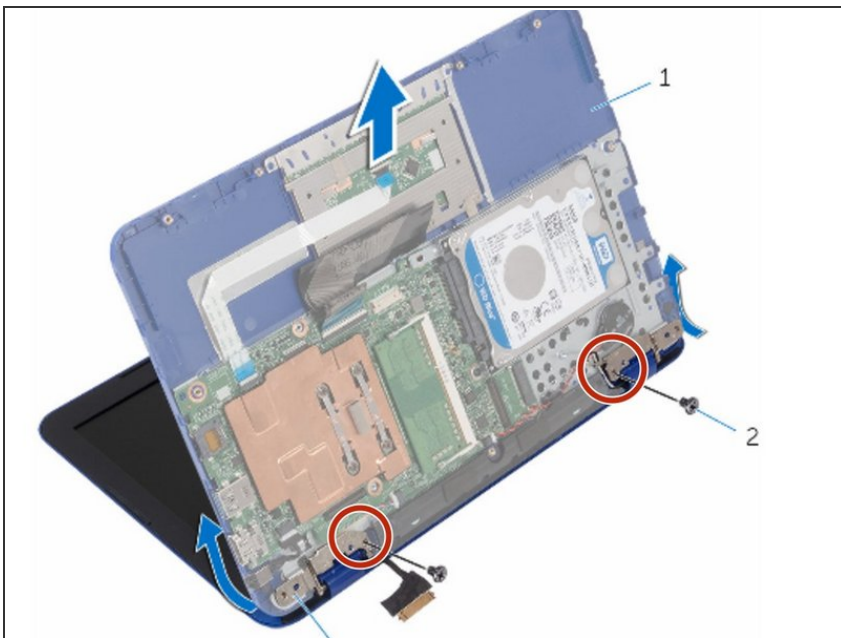
- Slide and lift the palm rest and keyboard assembly off the display assembly.

## Step 7 — Placing the Display Assembly



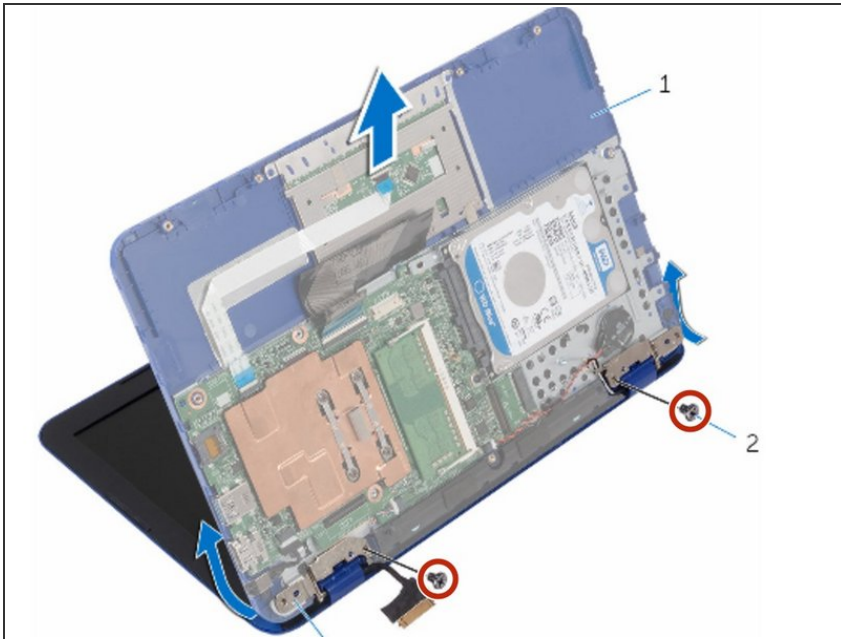
- Place the **NEW** display assembly on a flat and clean surface.

## Step 8 — Align the Screw Holes



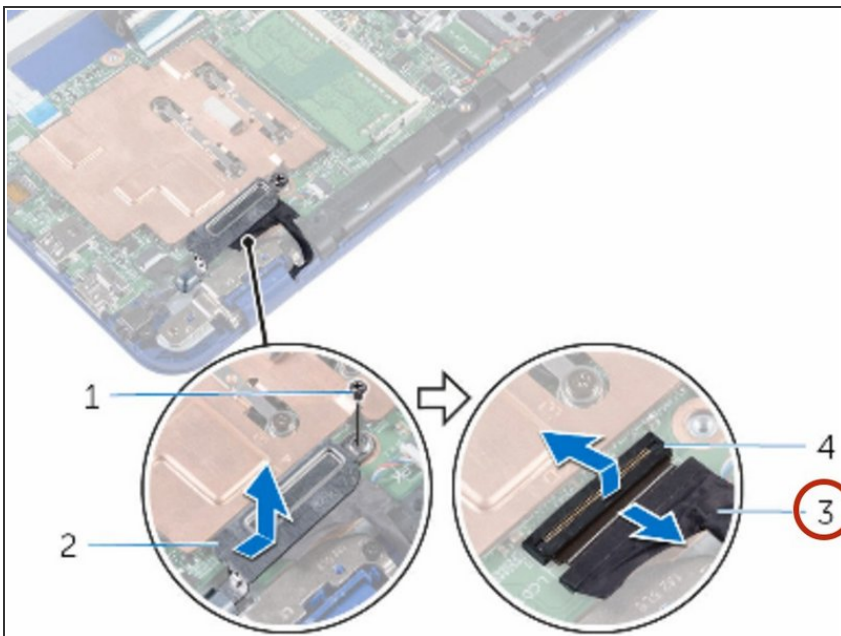
- Align the screw holes on the display hinges with the screw holes on the palm rest and keyboard assembly.

## Step 9 — Replace the Screws



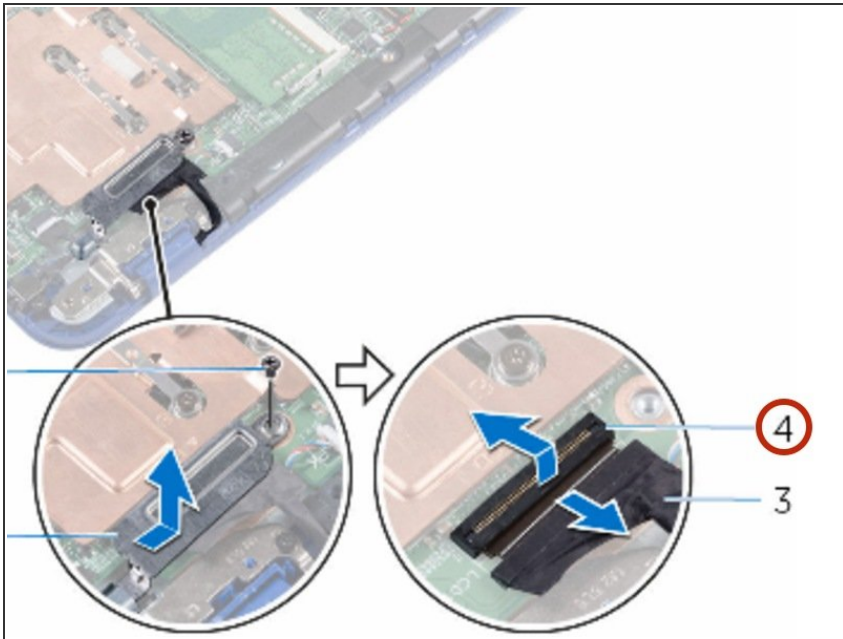
- Replace the screws that secure the display assembly to the palm rest and keyboard assembly.

## Step 10 — Securing the Cable



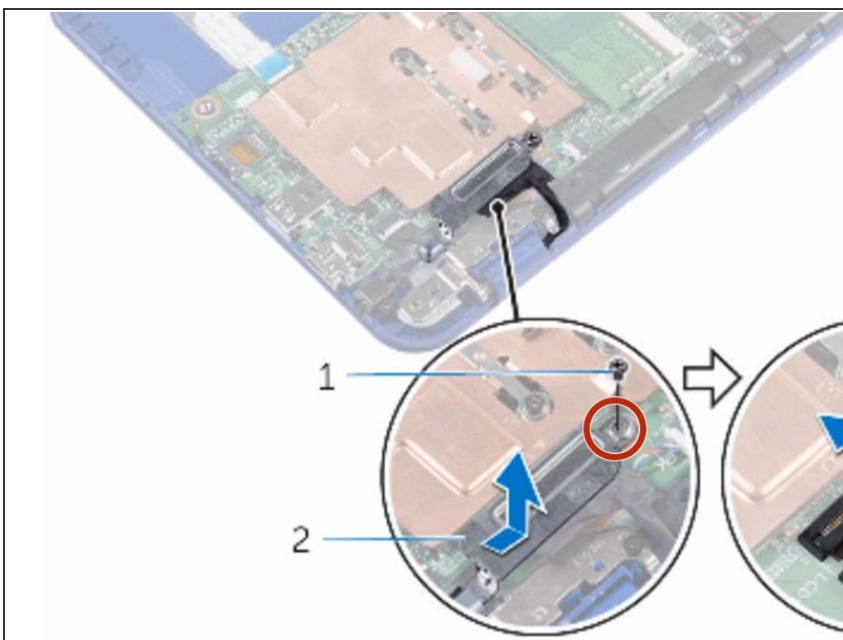
- Slide the display cable into the connector on the system board and close the latch to secure the cable.

## Step 11 — Sliding the Display Cable



- Slide the display-cable bracket into the slot on the palm rest and keyboard assembly.

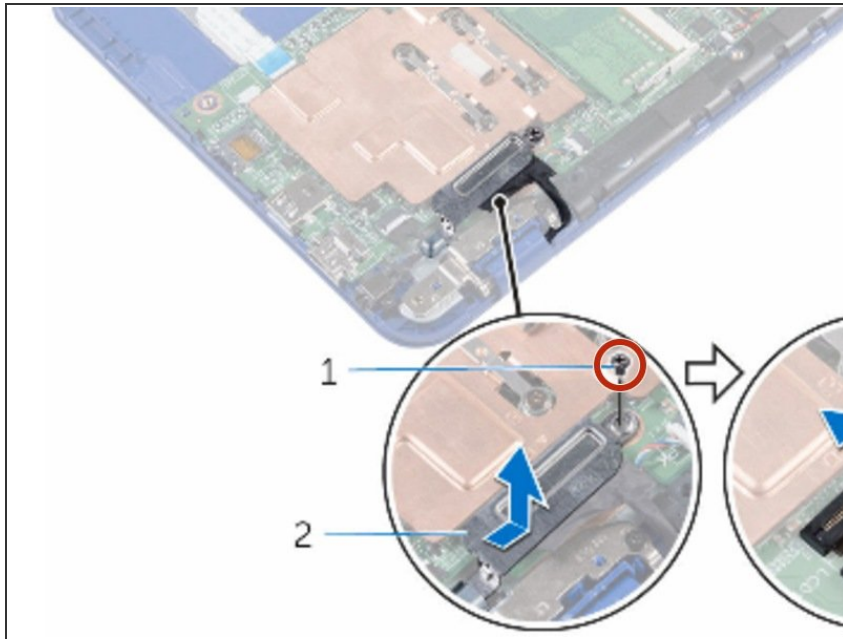
## Step 12 — Align the Screw Hole



- Align the screw hole on the display-cable bracket with the screw hole on the system board.



## Step 13 — Replace the Screw



- Replace the screw that secures the display-cable bracket to the system board.

To reassemble your device, follow these instructions in reverse order.

This document was last generated on 2019-07-10 06:57:13 PM.