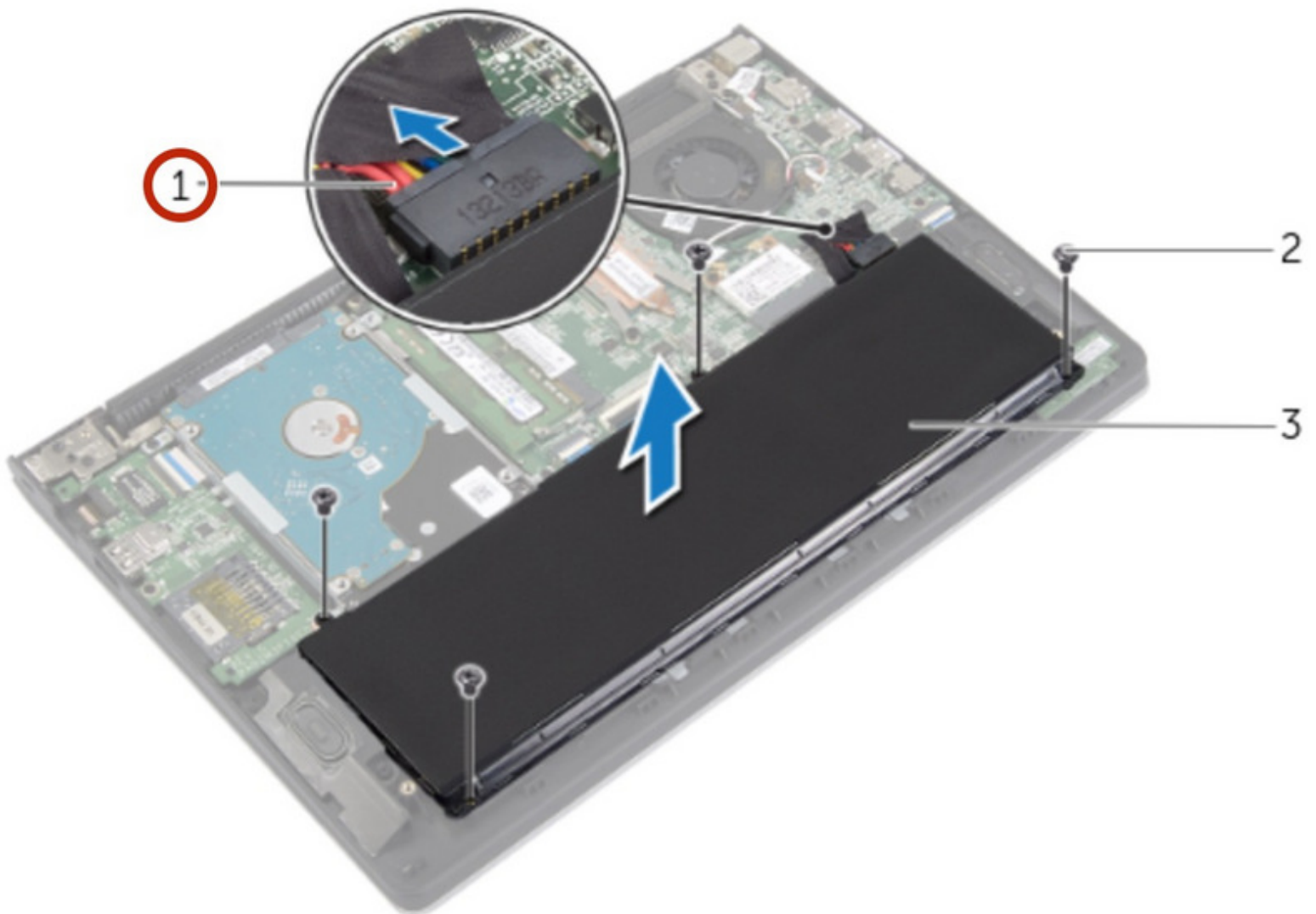




Dell Inspiron 11-3138 Battery Replacement

Written By: Teren Wallace



INTRODUCTION

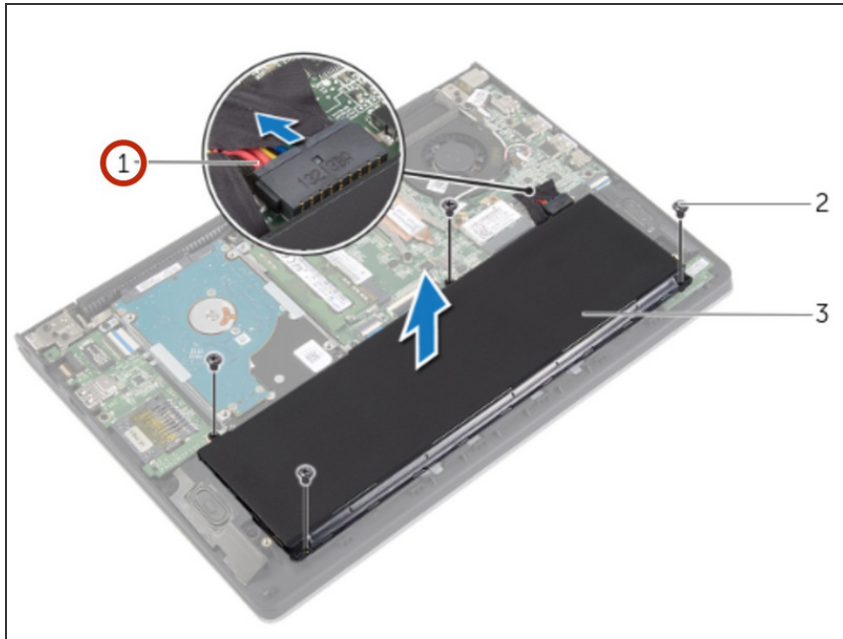
In this guide, we will show you how to remove and replace the Battery.



TOOLS:

- [Phillips #0 Screwdriver](#) (1)
-

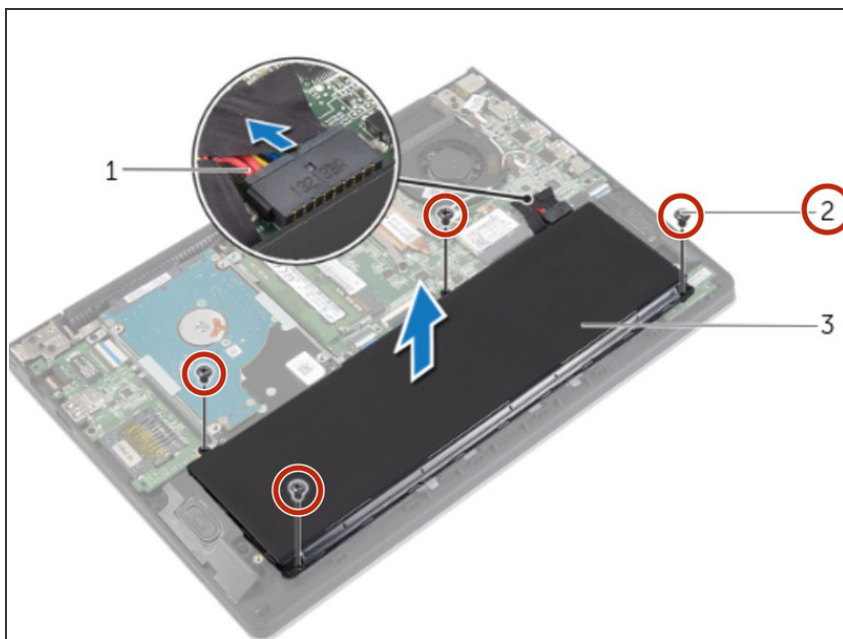
Step 1 — Disconnect the Battery Cable



⚠ WARNING: Before working inside your computer, read the safety information that shipped with your computer and follow the steps in ["Before Working Inside Your Computer"](#). After working inside your computer, follow the instructions in ["After Working Inside Your Computer"](#).

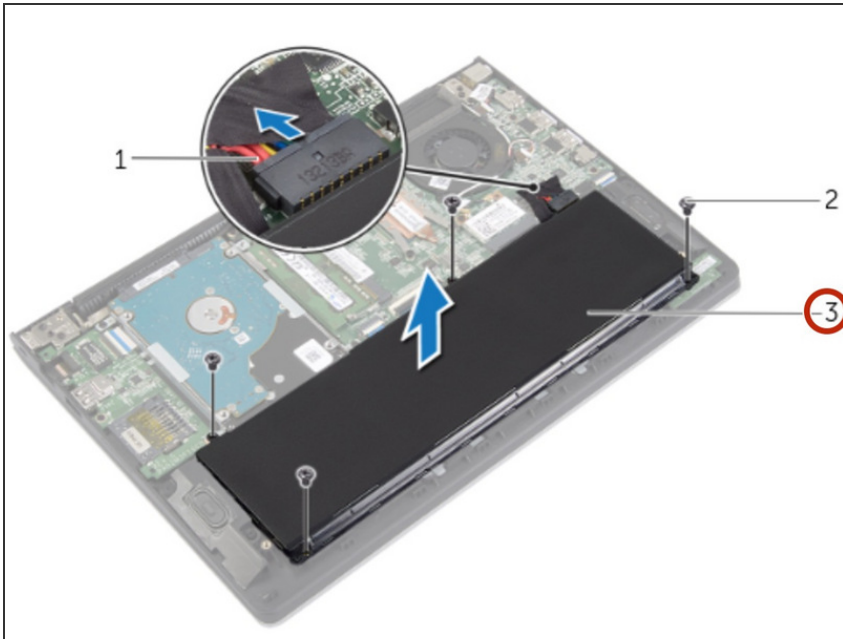
- Disconnect the battery cable from the system board.

Step 2 — Remove the Screws



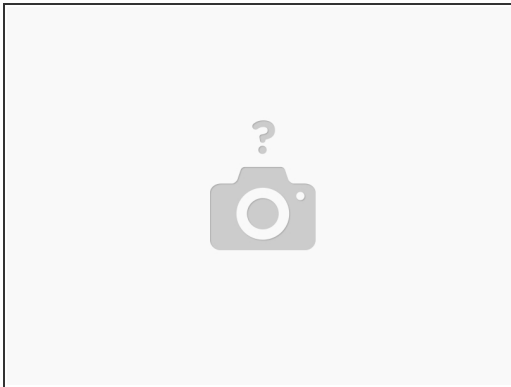
- Remove the screws that secure the battery to the palm-rest assembly.

Step 3 — Lifting the Battery



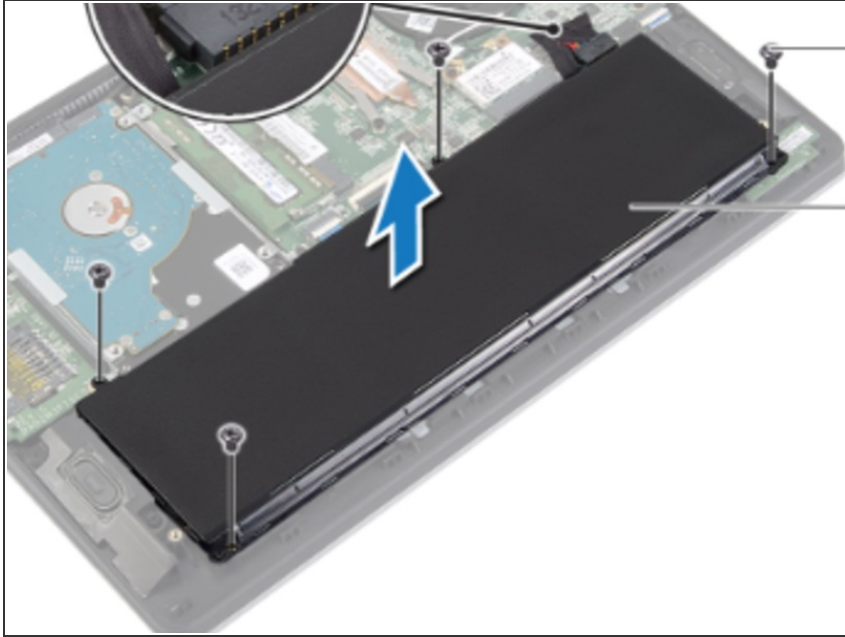
- Lift the battery, along with its cable, off the palm-rest assembly.

Step 4 — Grounding the System Board



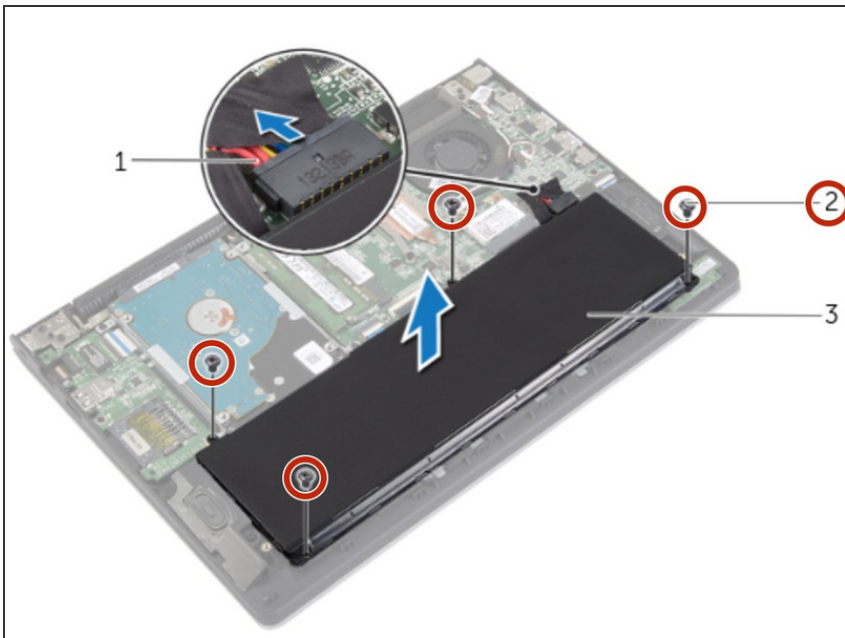
- Turn the computer over, open the display, and press the power button for about five seconds to ground the system board.

Step 5 — Align the Screw Holes



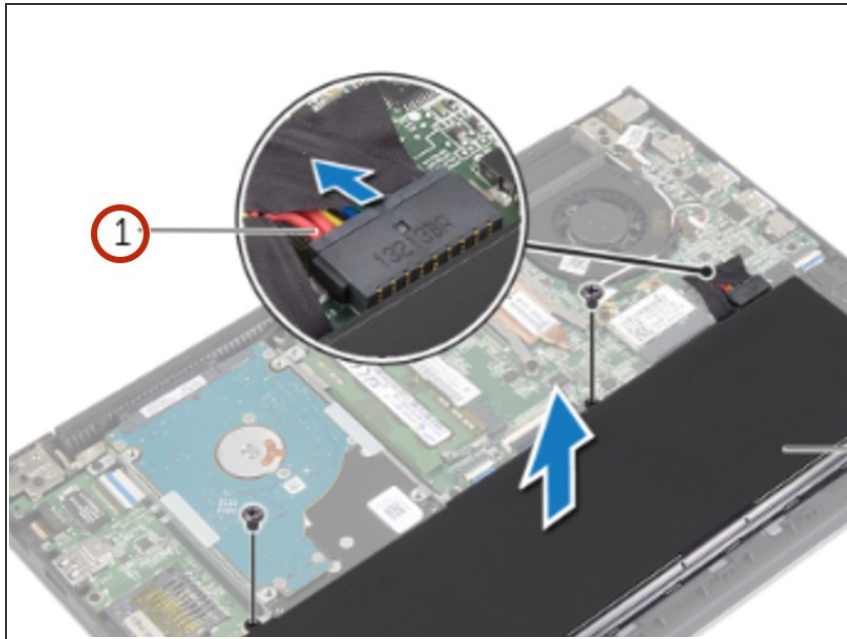
- Align the screw holes on the battery with the screw holes on the palm-rest assembly and place the battery on the palm-rest assembly.

Step 6 — Replace the Screws



- Replace the screws that secure the battery to the palm-rest assembly.

Step 7 — Connecting the Battery Cable



- Connect the battery cable to the system board.

To reassemble your device, follow these instructions in reverse order.

This document was last generated on 2018-05-27 01:23:29 AM.