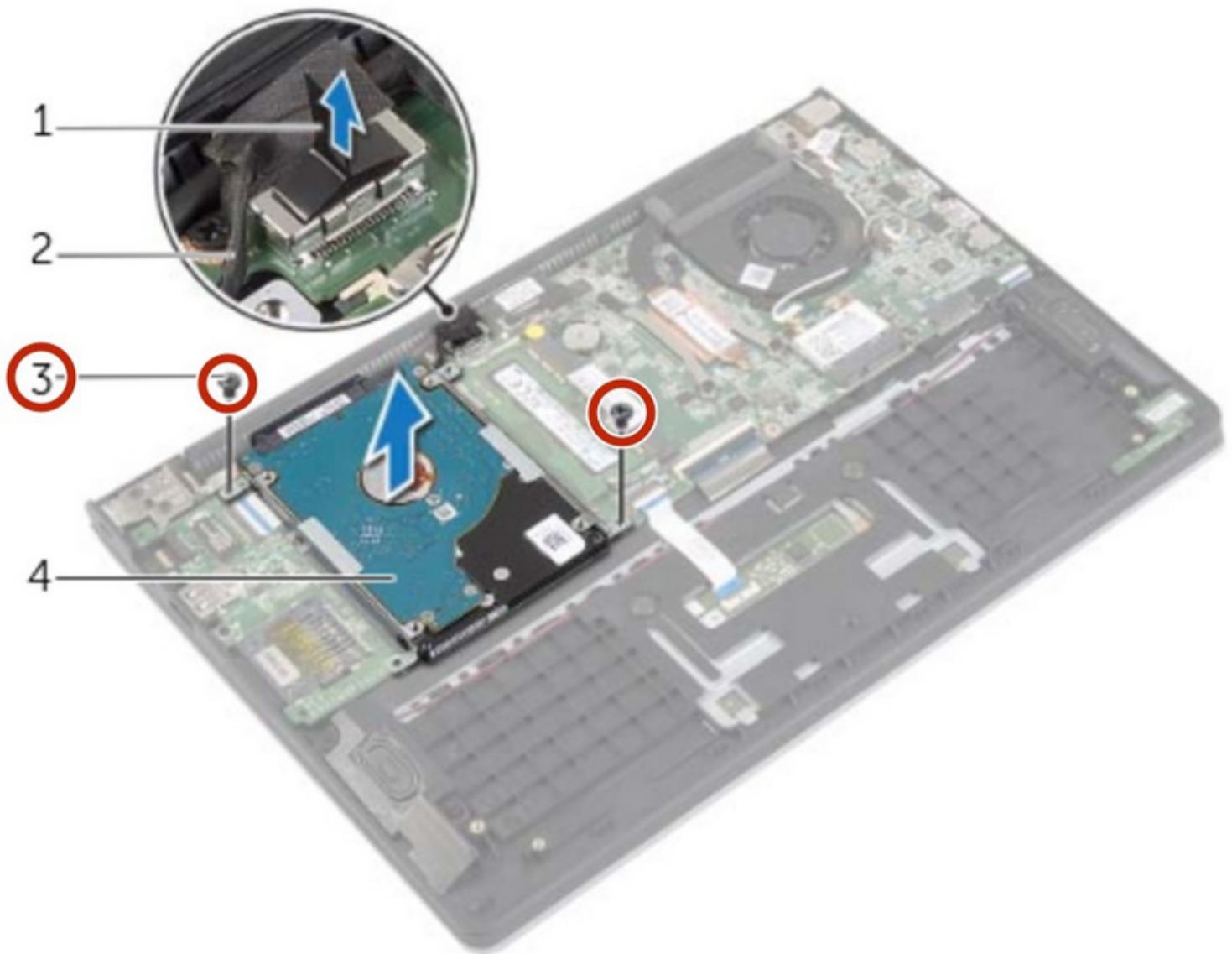




# Dell Inspiron 11-3138 Hard Drive Replacement

Written By: Teren Wallace



## INTRODUCTION

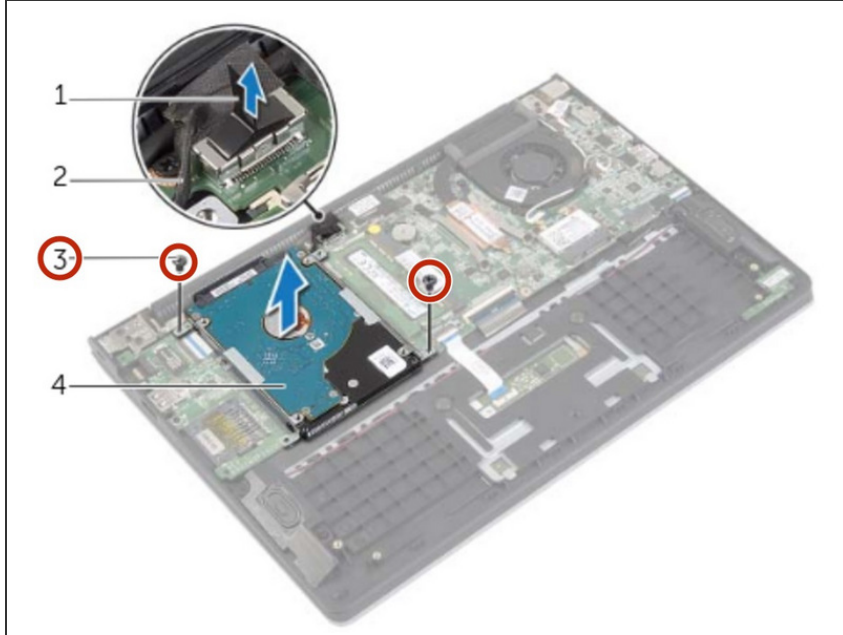
In this guide, we will be showing you how to remove and replace the Hard Drive.

---

### TOOLS:

- [Phillips #0 Screwdriver](#) (1)
-

## Step 1 — Remove the Screws



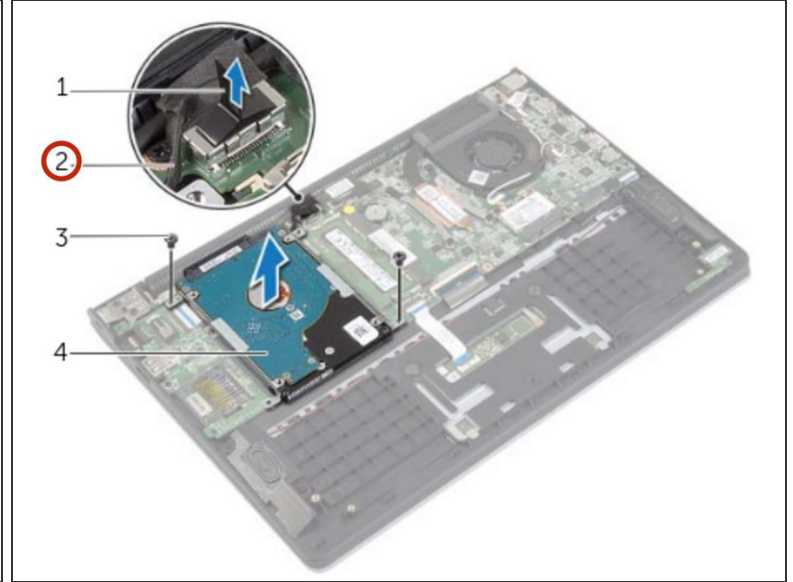
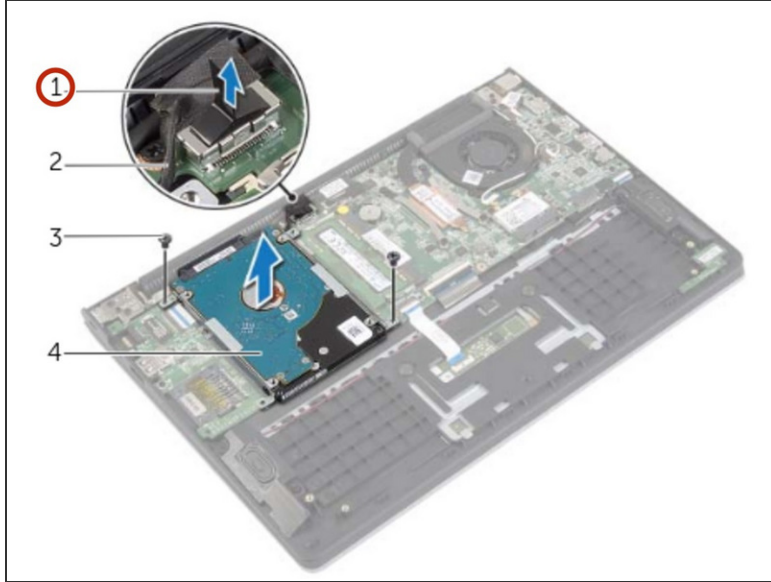
**⚠ WARNING:** Before working inside your computer, read the safety information that shipped with your computer and follow the steps in ["Before Working Inside Your Computer"](#). After working inside your computer, follow the instructions in ["After Working Inside Your Computer"](#).

**⚠ CAUTION:** To avoid data loss, do not remove the hard drive while the computer is in Sleep or On state.

**⚠ CAUTION:** Hard drives are extremely fragile. Exercise care when handling the hard drive.

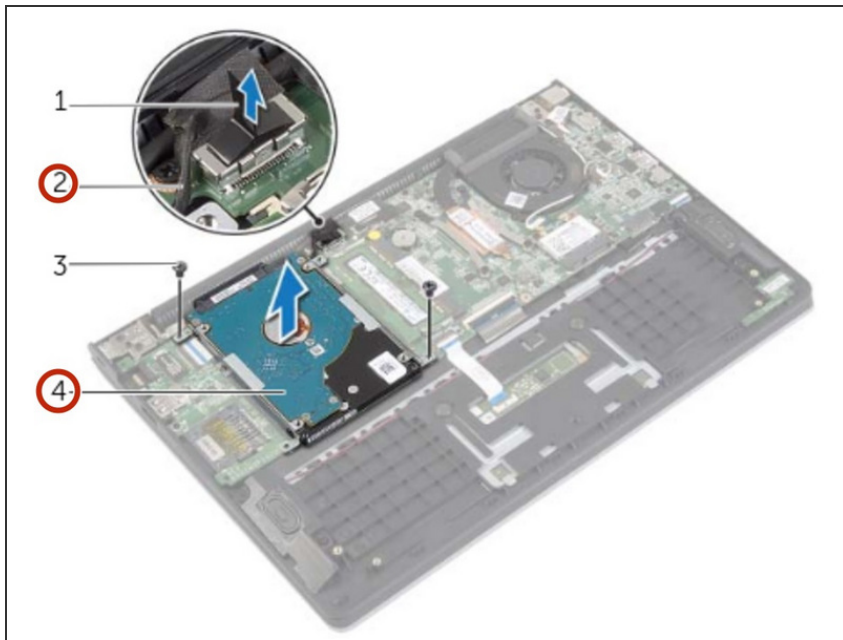
- Remove the screws that secure the hard-drive assembly to the palm-rest assembly.

## Step 2 — Disconnecting the Hard Drive Cable



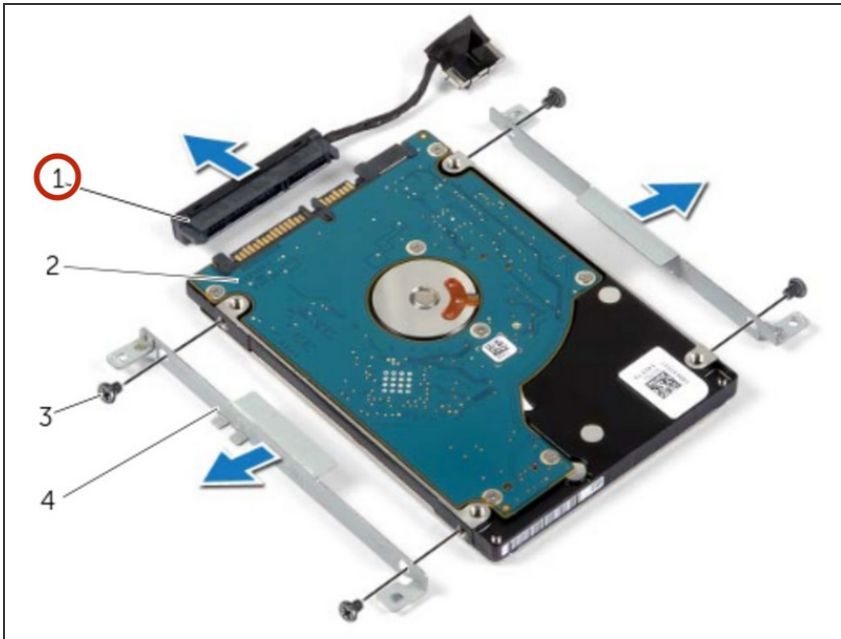
- Using the pull-tab, disconnect the hard drive cable from the system board.

## Step 3 — Lifting the Hard-Drive Assembly



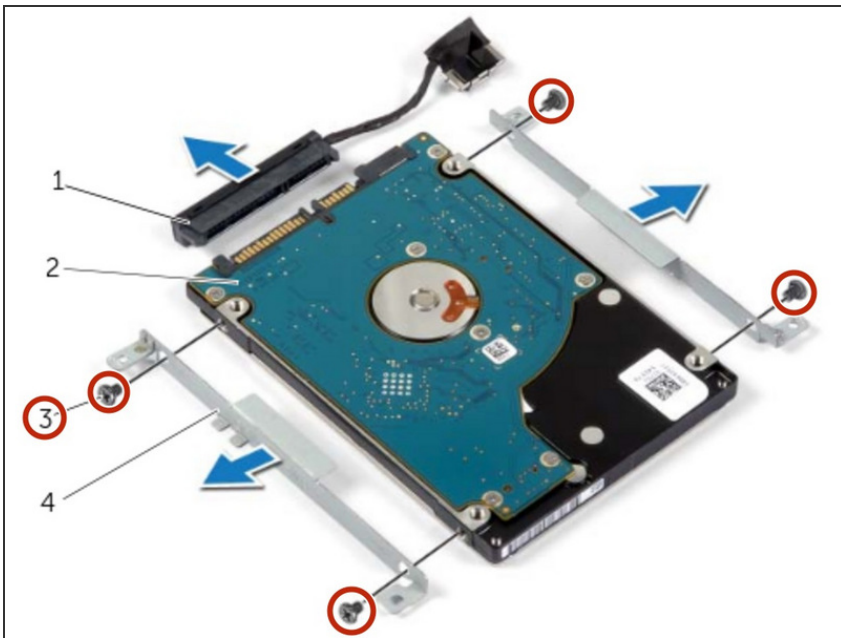
- Lift the hard-drive assembly, along with its cable, off the palm-rest assembly.

## Step 4 — Disconnect the Interposer



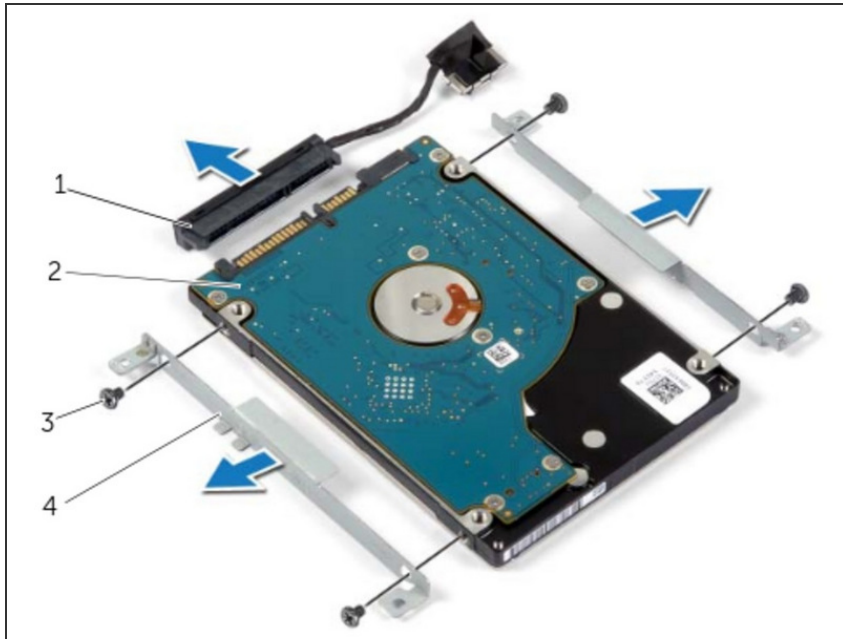
- Disconnect the interposer from the hard drive.

## Step 5 — Remove the Screws



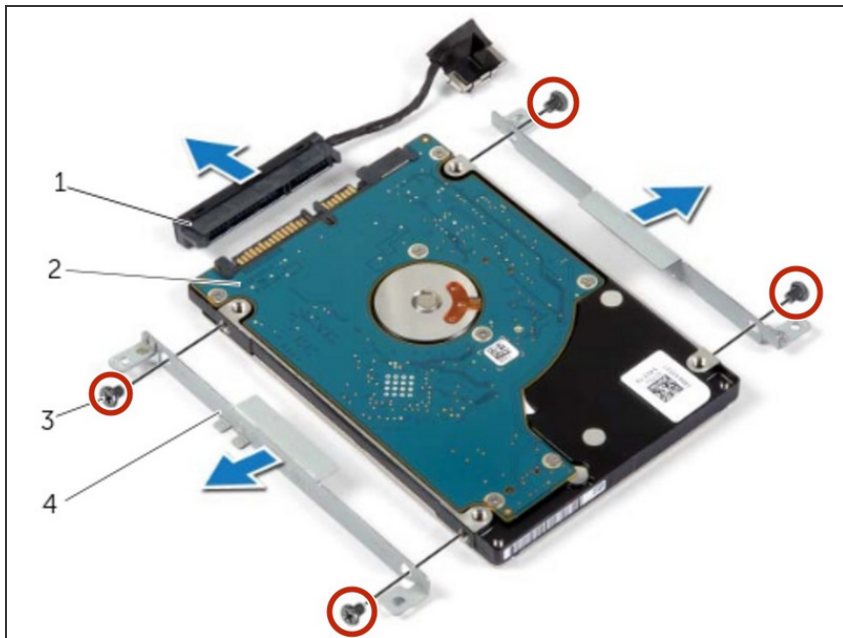
- Remove the screws that secure the hard-drive brackets to the hard drive.

## Step 6 — Align the Screw Holes



- Align the screw holes on the **NEW** hard drive with the screw holes on the hard-drive bracket.

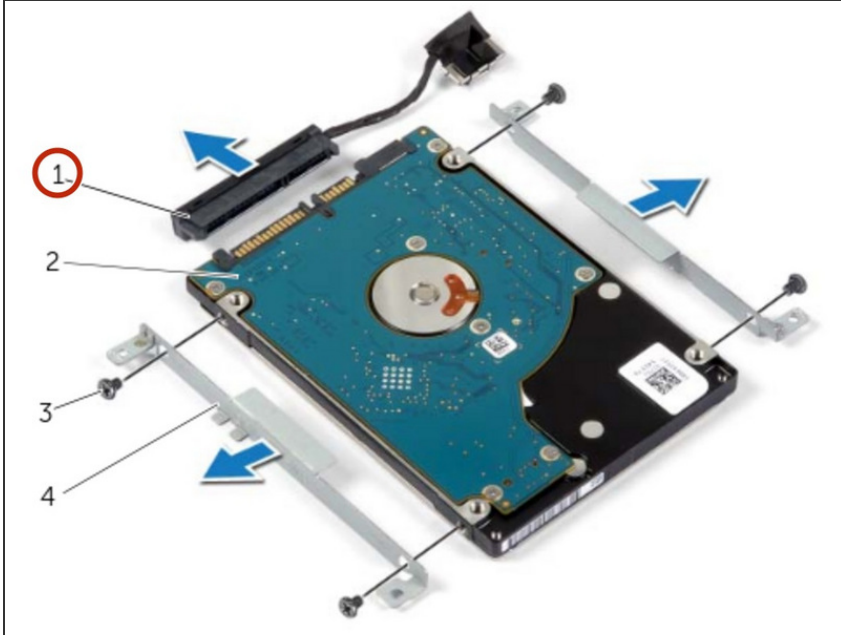
## Step 7 — Replace the Screws



- Replace the screws that secure the hard-drive brackets to the hard drive.

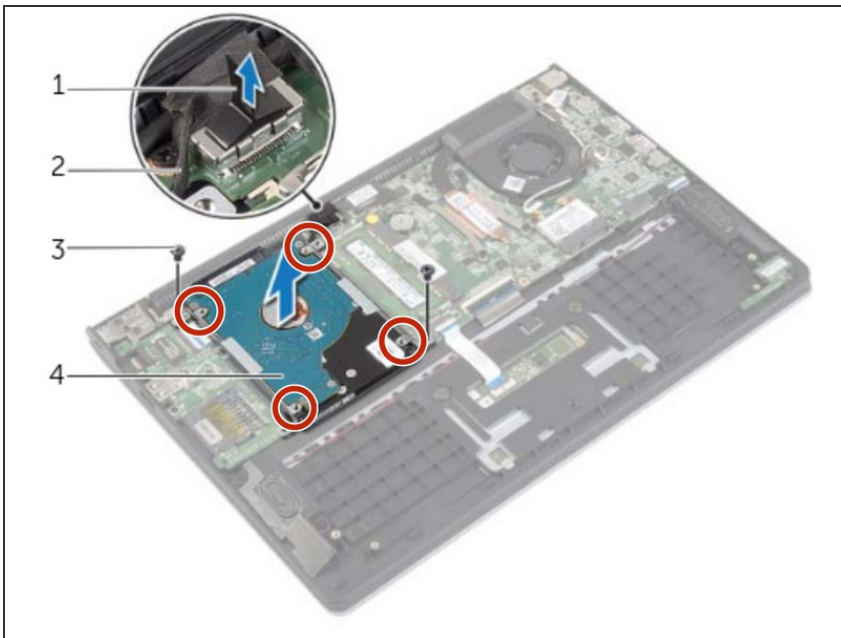


## Step 8 — Connect the Interposer



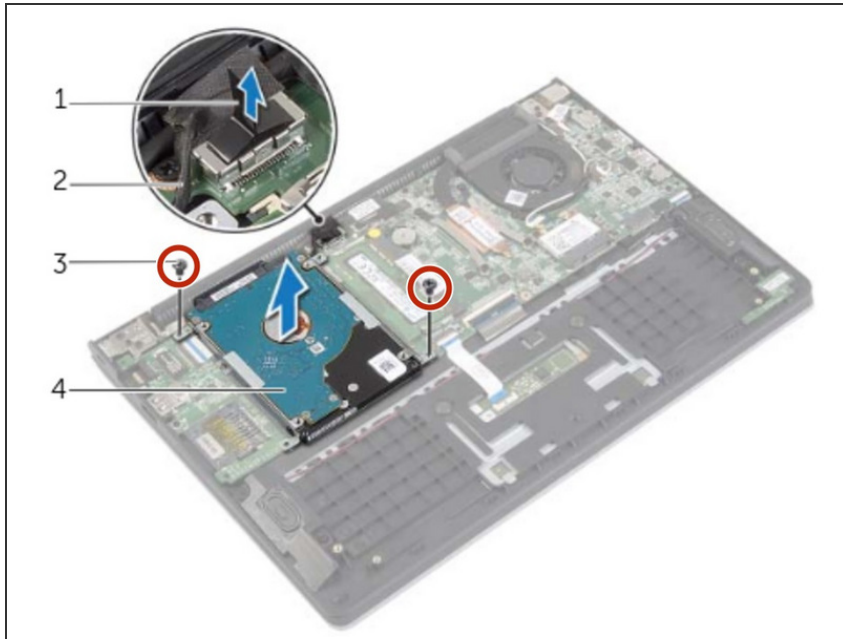
- Connect the interposer to the hard drive.

## Step 9 — Align the Screw Holes



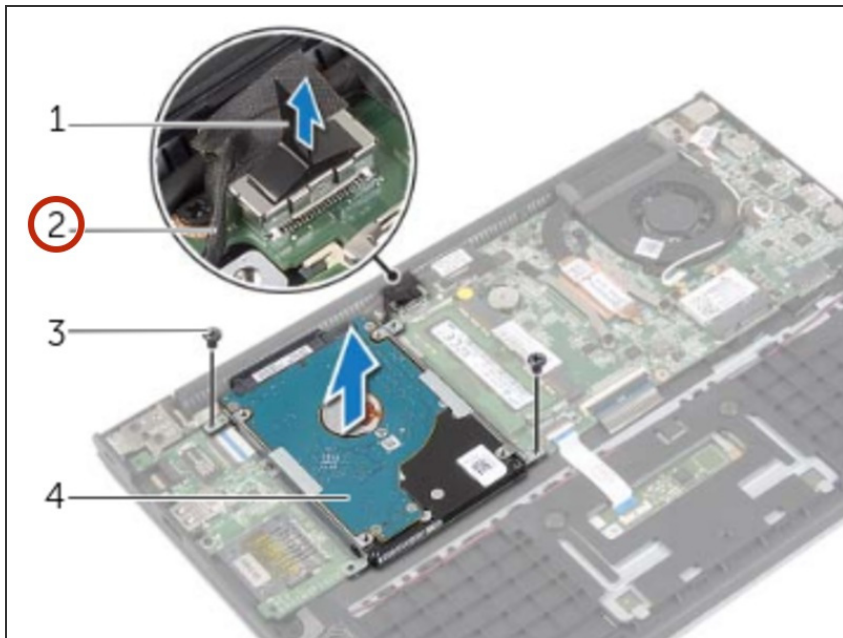
- Align the screw holes on the hard-drive assembly with the screw holes on the palm-rest assembly.

## Step 10 — Replace the Screws



- Replace the screws that secure the hard-drive assembly to the palm-rest assembly.

## Step 11 — Connecting the Hard-Drive Cable



- Connect the hard-drive cable to the system board.

To reassemble your device, follow these instructions in reverse order.