



Samsung BD-F5700 Disc Tray Replacement

The following guide will show the steps to remove the disc tray.

Written By: Livan Perez



INTRODUCTION

This guide will show you how to open up the device to remove and replace the disc tray.

TOOLS:

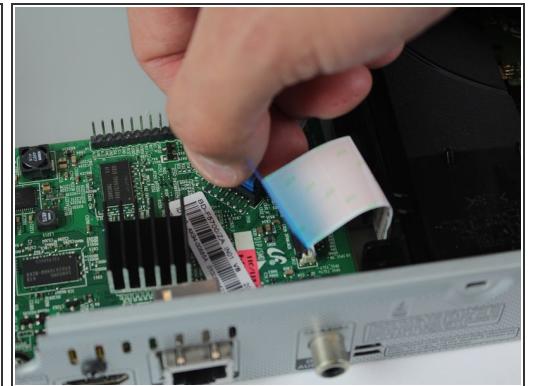
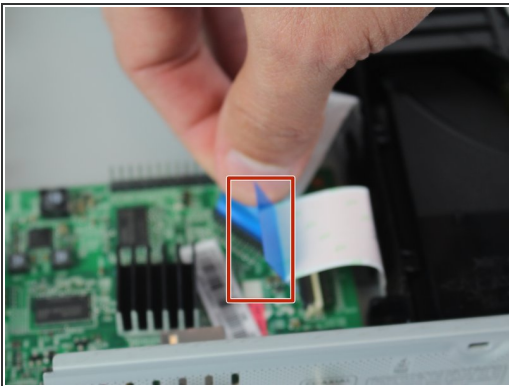
- [Phillips Head Screwdriver size J1](#) (1)
-

Step 1 — Disc Tray



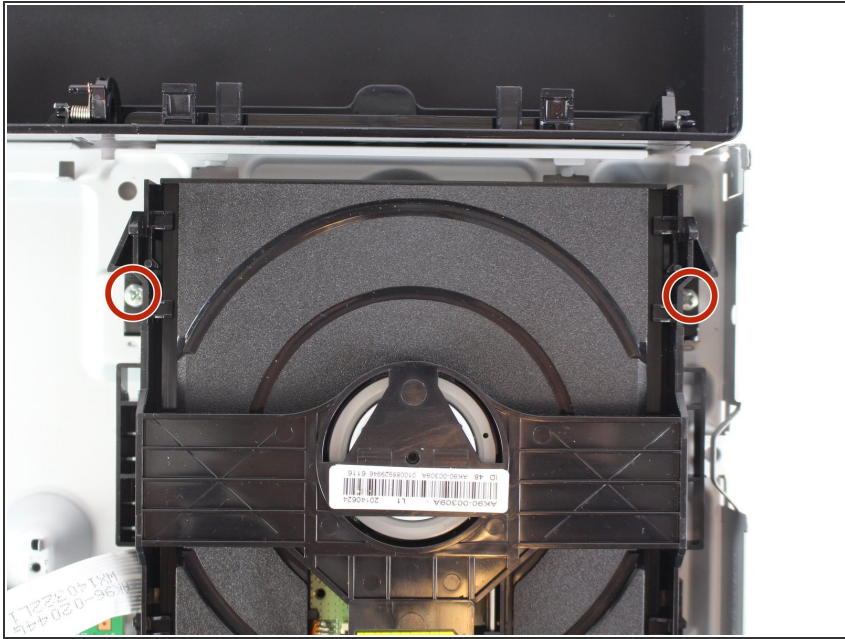
- Remove the two 10mm screws with a Phillips #1 screwdriver.
- Use the plastic prying tool to separate the top plastic casing from the bottom metal casing.

Step 2



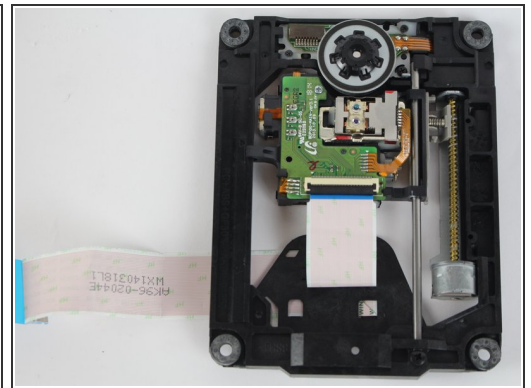
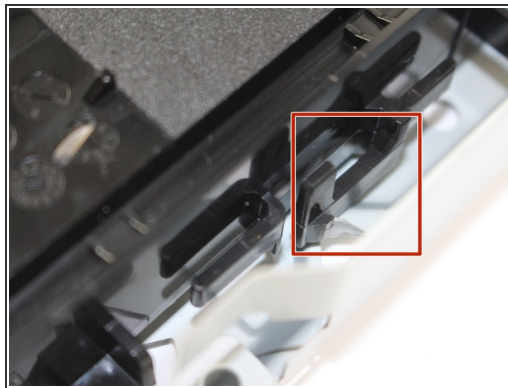
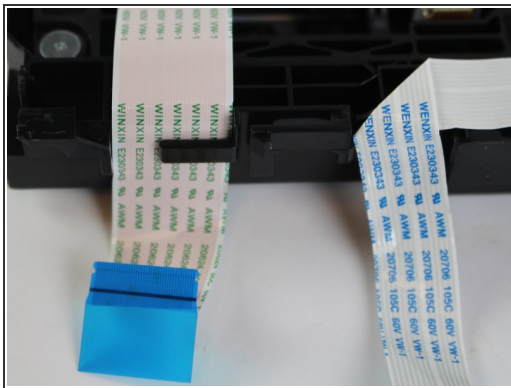
- Grip the blue tab and pull upwards to remove the ribbon cable from the motherboard.
- i** If it feels stuck, wiggle it while pulling gently to coerce it out.

Step 3



- Remove the two 7mm screws with a Phillips #1 screwdriver.

Step 4



- Pinch both tabs on the side of the disc tray, push towards the front, and lift the disc tray out to remove.

To reassemble your device, follow these instructions in reverse order.

This document was last generated on 2019-08-21 06:56:51 AM.