



Toshiba Satellite L55t-B5271 Battery Replacement

To replace your broken battery, follow these guide instructions.

Written By: Noelle Dulude



INTRODUCTION

This guide will help to replace your malfunctioning battery. It is a very simple process to remove your broken battery and replace it with a new one.

TOOLS:

- [Phillips #00 Screwdriver](#) (1)

PARTS:

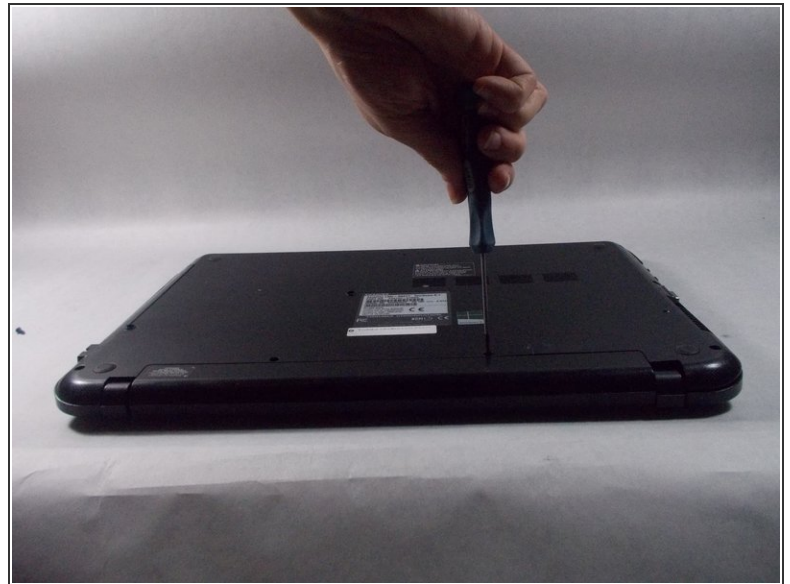
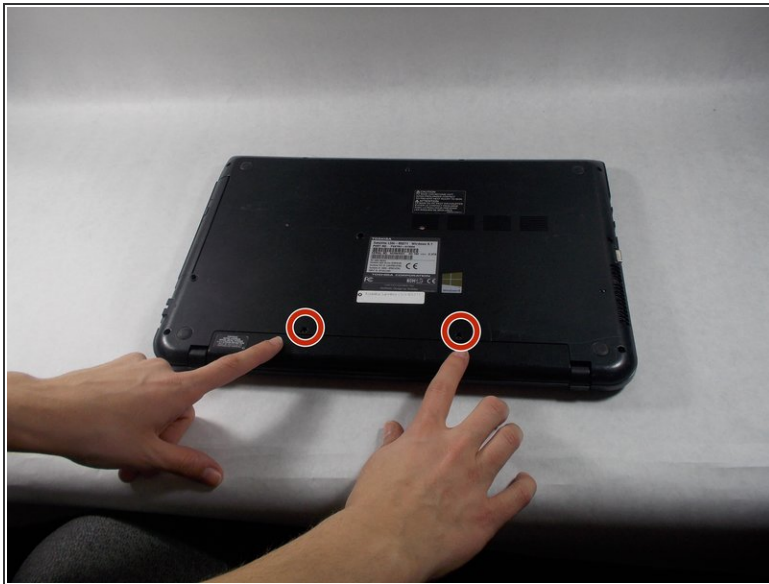
- [Toshiba Satellite L55t-B5271 Battery](#) (1)

Step 1 — Battery



- ⓘ Make sure you turn the laptop off first.
- Close the laptop lid and flip it over so that Toshiba logo is facing down.

Step 2



- Remove the two 6.5 mm Phillips head screws indicated using a Phillips #00 screw driver.

Step 3



- Once the screws are removed, slide the battery pack out of the computer.

To reassemble your device, follow these instructions in reverse order.