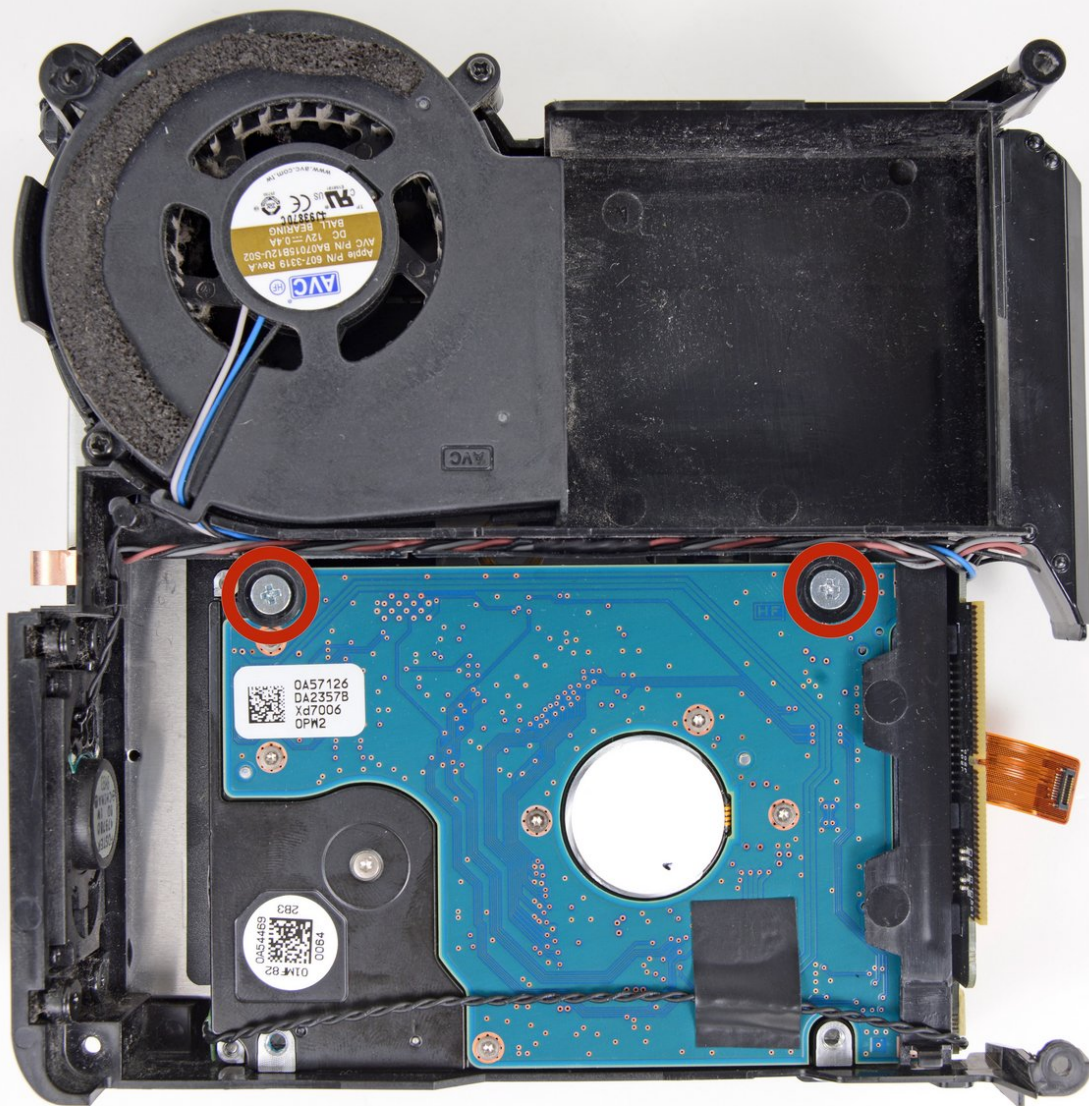




Mac mini Model A1283 Hard Drive Replacement

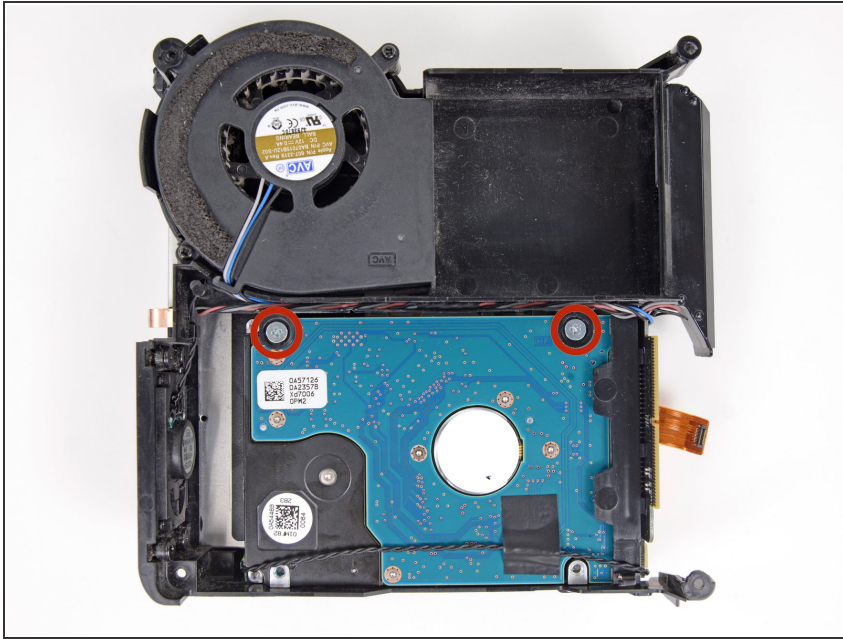
Written By: Walter Galan



 **TOOLS:**

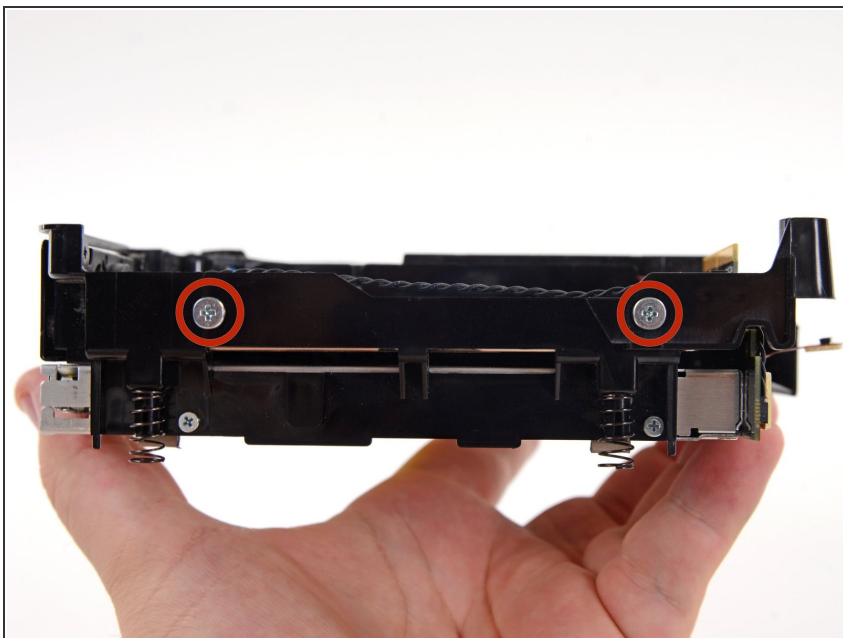
- Phillips #00 Screwdriver (1)
 - Spudger (1)
-

Step 1 — Hard Drive



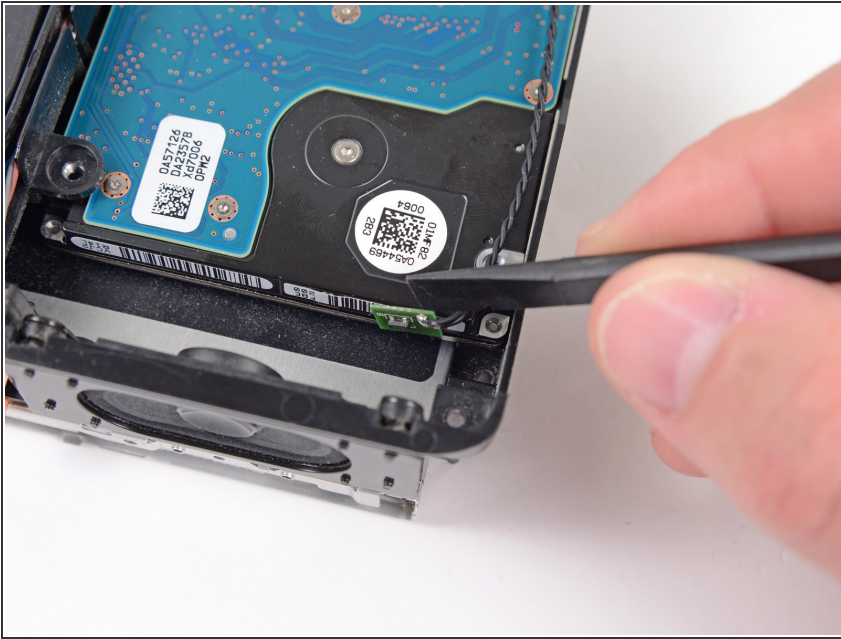
- Remove the two Phillips screws connecting the underside of the hard drive to the internal frame.

Step 2



- Remove the two Phillips screws securing the side of the hard drive to the internal frame.

Step 3



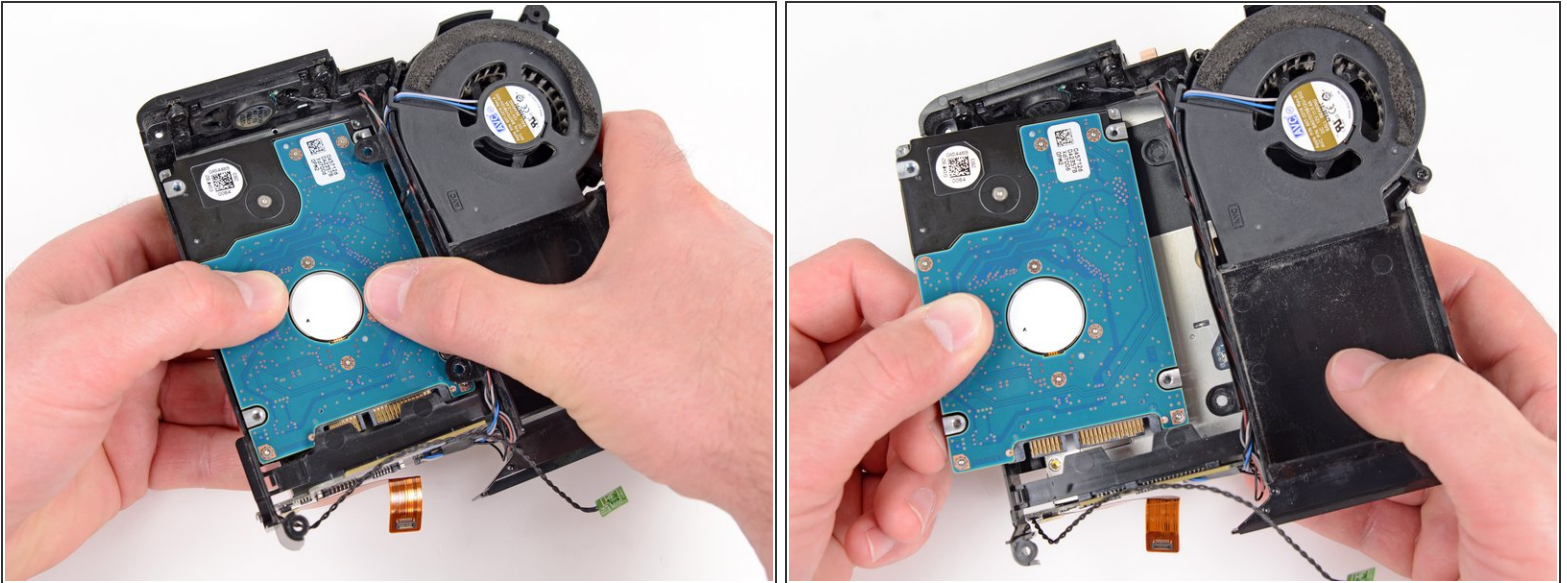
- Use the flat end of a spudger to pry the hard drive thermal sensor board off the adhesive securing it to the side of the hard drive.

Step 4



- Remove the strip of tape holding the thermal sensor cable to the hard drive and remove the thermal sensor from the hard drive.
- ★ You'll want to transfer this thermal sensor to the same position on your new hard drive.

Step 5



- Slide the hard drive toward the speaker to disconnect it from the interconnect board.
- Lift the hard drive from the edge opposite the fan and remove it from the internal frame.

To reassemble your device, follow these instructions in reverse order.