



# LG Ultimate 2 SD Card Replacement

This guide will teach you how to remove the SD card on your LG Ultimate 2.

Written By: Devin Isenhower



## INTRODUCTION

This guide will teach you how to remove the SD card on your LG Ultimate 2. In order to remove the SD card, you will need to use a spudger in order to loosen the back of the phone. Then, you will remove the back of the phone with your hands. Finally, you will use your hand or a metal spudger to pull the SD card out of the phone.

---

### TOOLS:

- [Metal Spudger](#) (1)
  - [iFixit Opening Tools](#) (1)
-

## Step 1 — SD Card



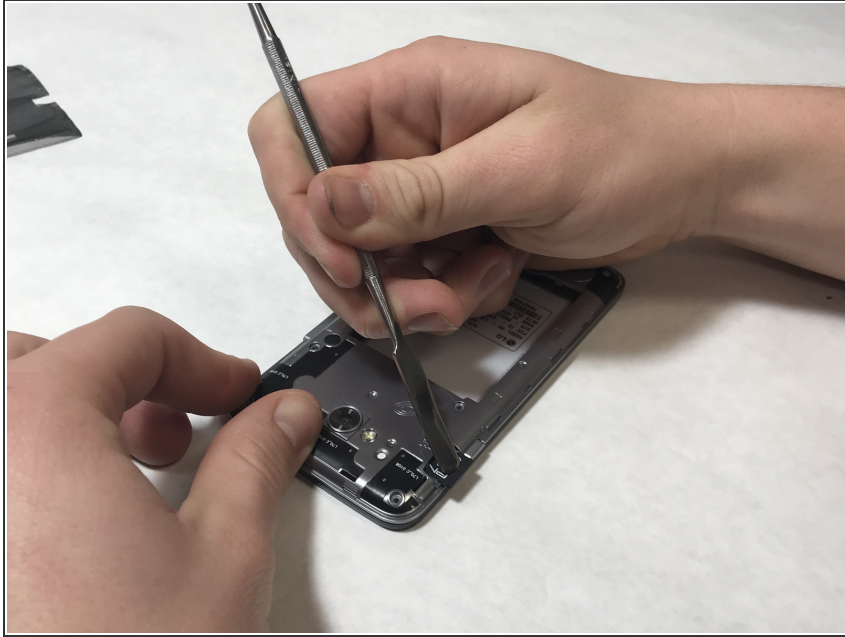
- Wedge the plastic opening tool into the seam between the plastic backing and the rest of the phone.

## Step 2



- Use your hand to pull the plastic cover completely off of the phone.

## Step 3



- Use the metal spudger or your hand to pull the SD card out.

To reassemble your device, follow these instructions in reverse order.

This document was last generated on 2018-05-29 01:19:15 AM.