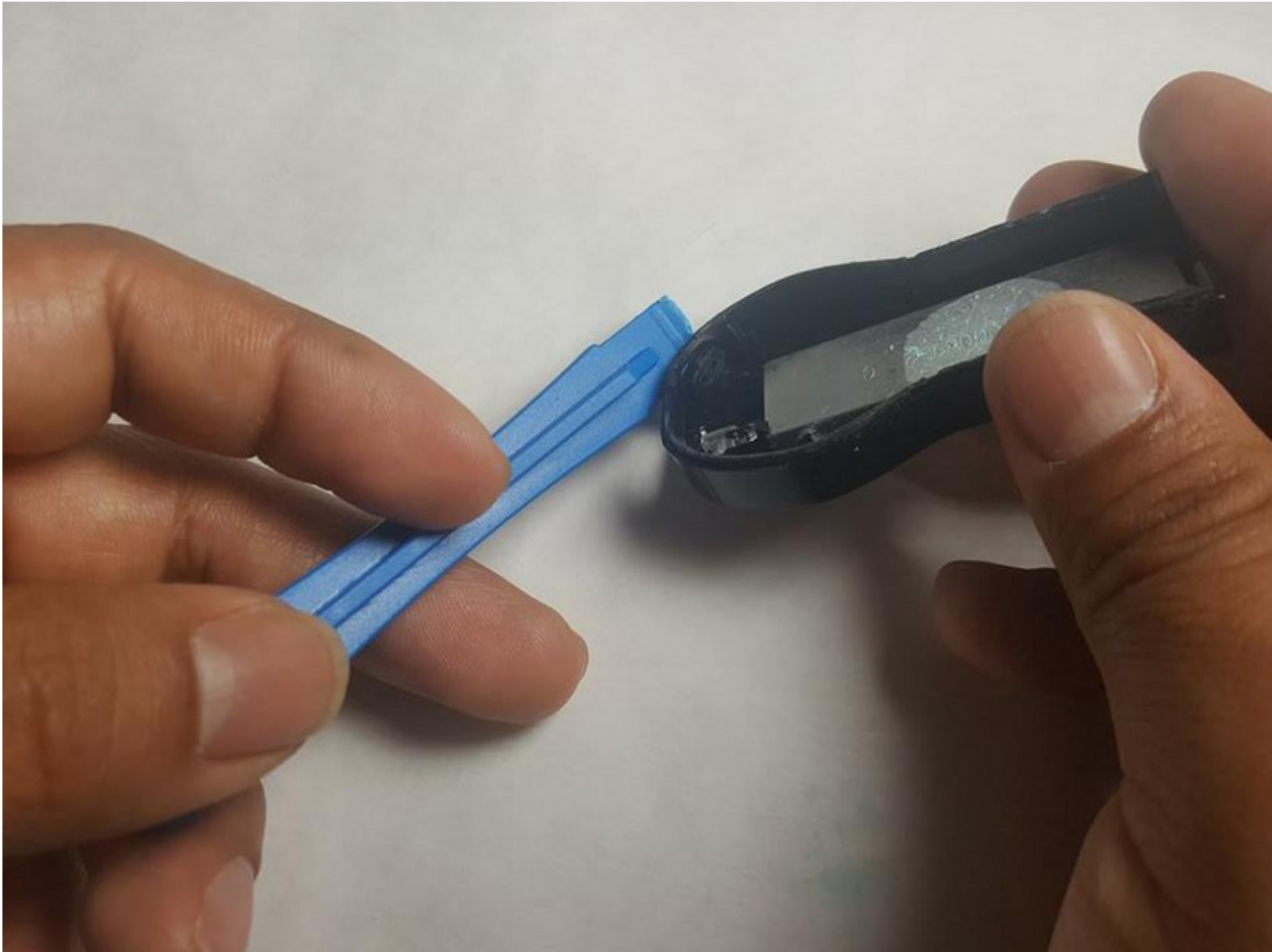




Chromecast Power Button Replacement

Replace an astray or broken plastic power button.

Written By: Cameron Heiges



INTRODUCTION

Power buttons notoriously end up inside of devices if too much force is applied. This guide aims to replace the power button into it's desired location.

TOOLS:

- [iFixit Opening Tools](#) (1)

Largest Size

Any plastic opening tool can be used.

Step 1 — Case



- Place the Google Chromecast face down (with text not showing) on a flat surface.
- Insert a flat tool just above the micro-USB port to detach the top part of the case from the bottom.

Step 2



- Continue prying the top of the case from the bottom toward the HDMI port until the top casing is completely removed.

Step 3



- Remove the circuit board, lifting from the HDMI port.
- ⓘ The power button may become dislodged.

Step 4



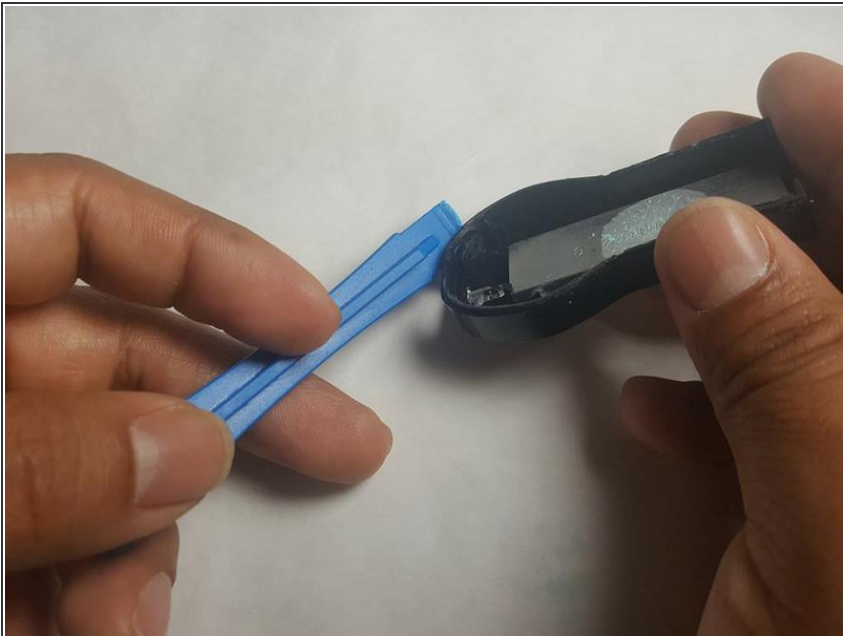
- Pry the plastic clamp from the heatsink.
- ⓘ Do not pry too hard to avoid breaking the clamp.

Step 5



- Insert a plastic opening tool under the heatsink, and pry the heatsink up and out of the case.
- ⓘ The adhesive's strength may vary, and force should be applied gently until it becomes dislodged to avoid breaking the device.

Step 6 — Power Button



- Press the plastic button from the outside of the port, pushing it inward if it is stuck.

To reassemble your device, follow these instructions in reverse order.

This document was last generated on 2018-06-04 08:42:16 PM.