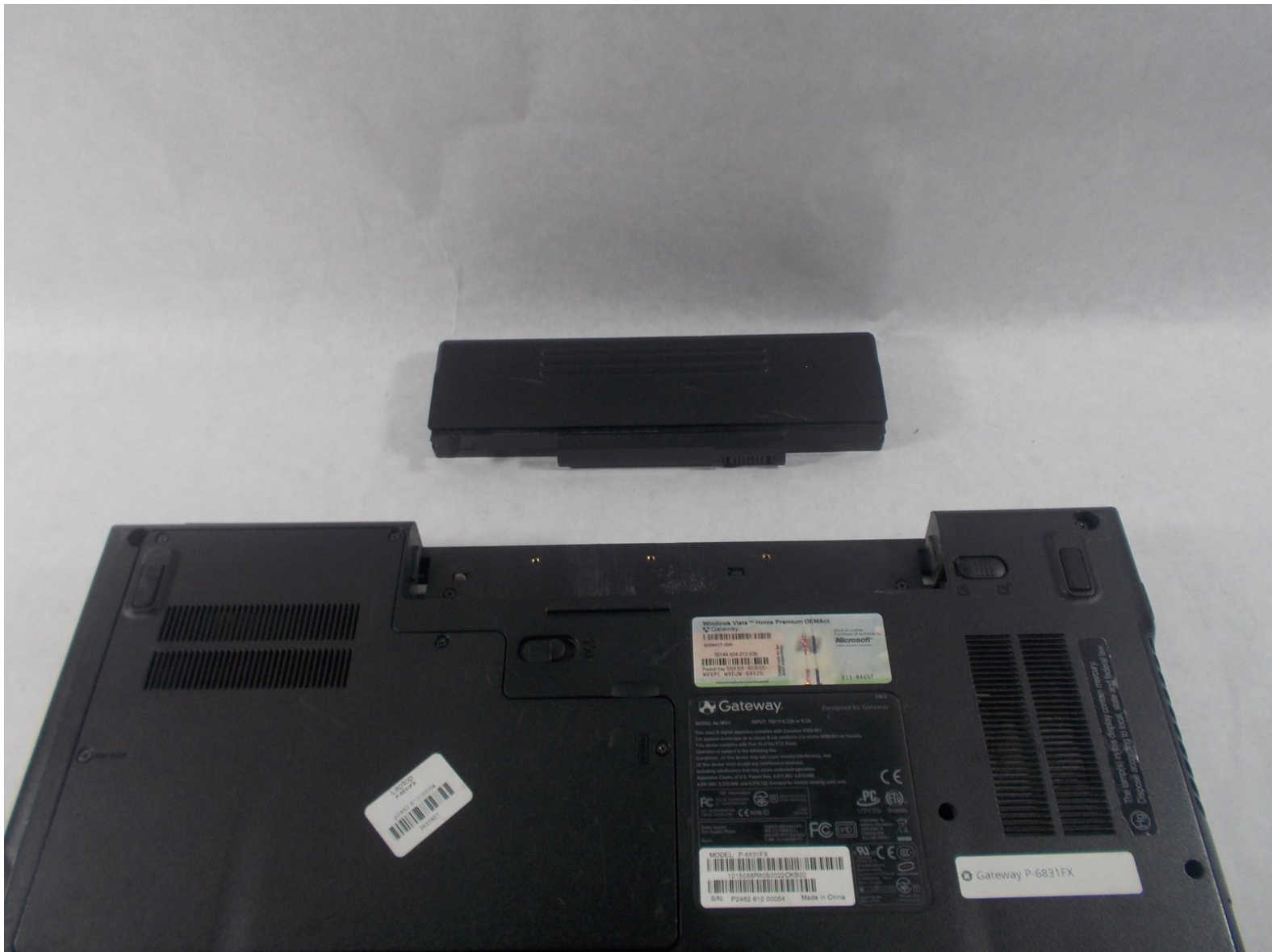




Gateway P-6831FX Battery Replacement

This guide will go over how to remove and replace the battery for the P-6831FX.

Written By: Justin Freitas



INTRODUCTION

The battery is a component that will power your device. This guide will go over how to remove and replace the battery for the P-6831FX.

Step 1 — Battery



- Turn your laptop upside down and locate the 1st unlocking switch.

⚠ Make sure to unplug your laptop charger, as removing the battery while the device is charging may damage the battery and or the charger.

Step 2



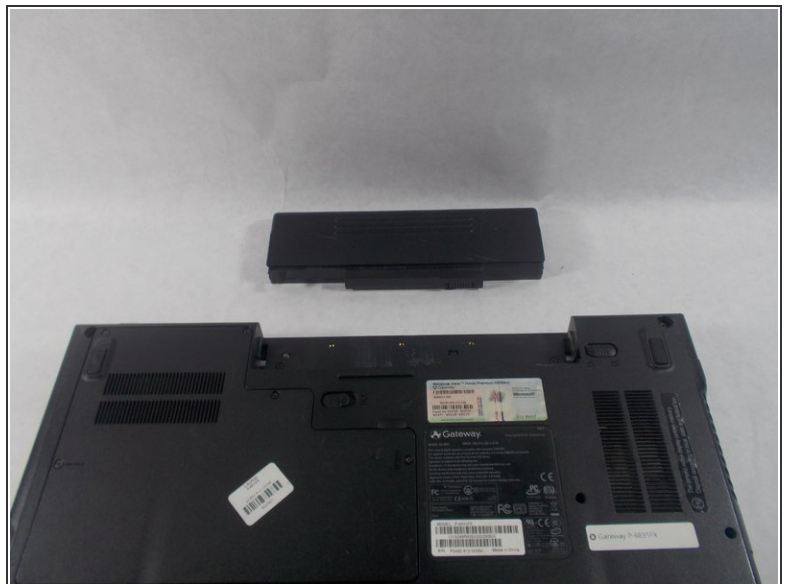
- Put the switch from the locked position to the unlocked position.

Step 3



- Slide the lock to the right to unlock the battery from the device.

Step 4



- While holding the 2nd lock in the unlocked position, pull the battery away from the laptop.

To reassemble your device, follow these instructions in reverse order.