



# Lenovo Essential G570 Battery Replacement

This guide demonstrates how to remove the battery for the Lenovo Essential G570.

Written By: Nina Francisco



## INTRODUCTION

The Lenovo G570 has a 6-cell Lithium-ion battery that fits into the bottom side of the computer. Battery removal is an essential first step to any further repair or disassembly of the device.

## Step 1 — Battery



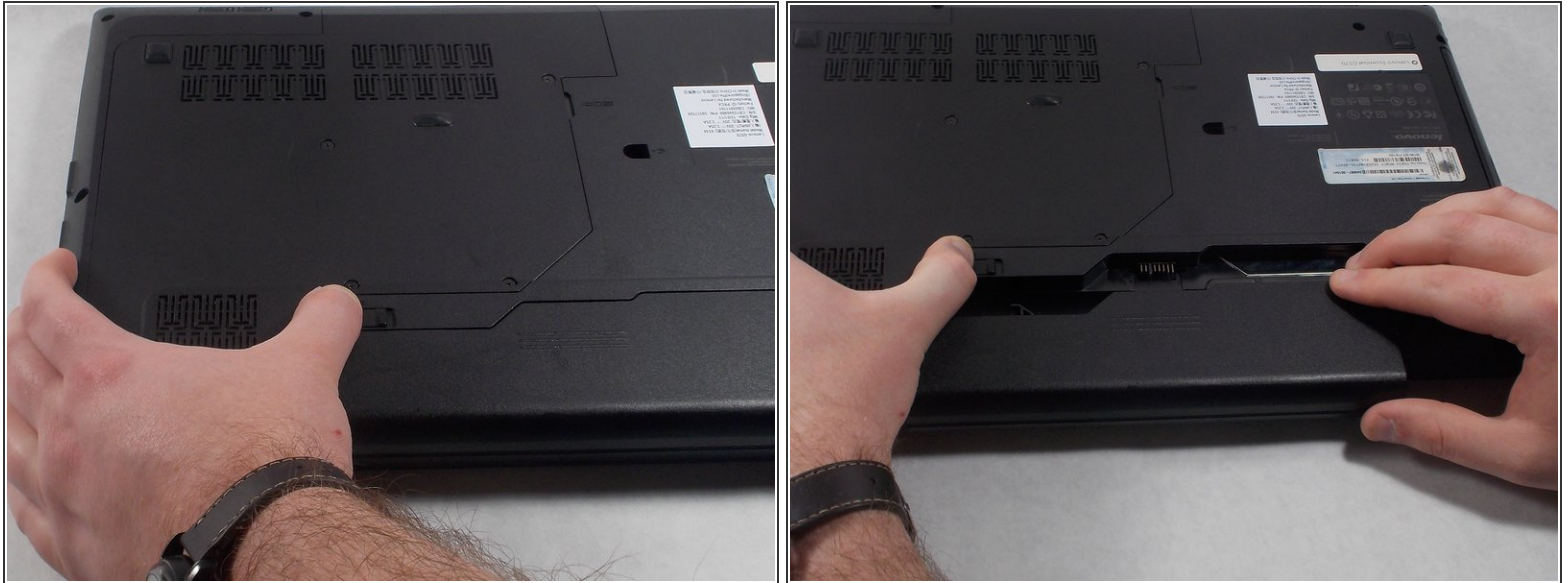
- Turn off the laptop.
- Disconnect the charging cable.
- ⚠ Failure to unplug the cable could result in electric shock.
- Turn the computer upside down.

## Step 2



- Locate the two switches that lock the battery.
- Push the right switch outwards to unlock the battery.

## Step 3



- Push and hold the left switch outwards to unlock the battery.
- Pull the battery away from the computer.

To reassemble your device, follow these instructions in reverse order.