



Bose SoundDock 1st Gen Sound Board Replacement

This guide will replace the sound board and fix the common problem with the sound going out on these Bose Sound Dock 1st Gen

Written By: Collin Kindall



INTRODUCTION

Outline what you are going to teach someone how to do.



TOOLS:

- [Phillips #0 Screwdriver](#) (1)



PARTS:

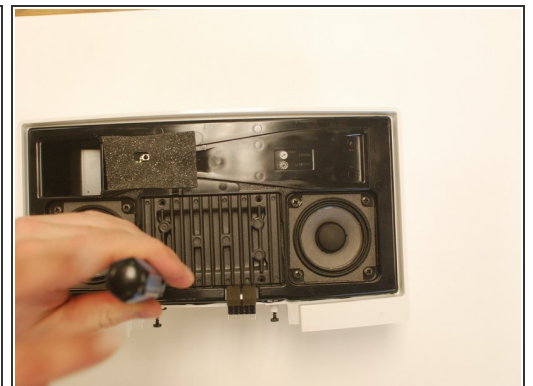
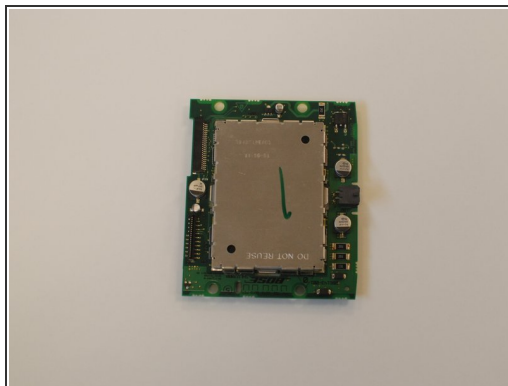
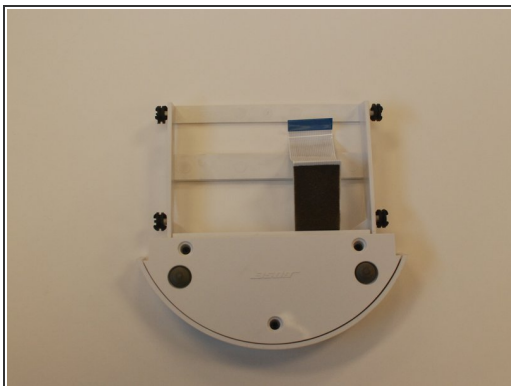
- [Bose SoundDock Series 1 Audio Board](#) (1)

Step 1 — Taking off the Bottom Plate.



- In order to reach the Sound Board to fix the audio problem on your Bose SoundDock you must first take the bottom plate off using a standard Phillips Screwdriver.

Step 2 — Removing Docking Cradle Assembly



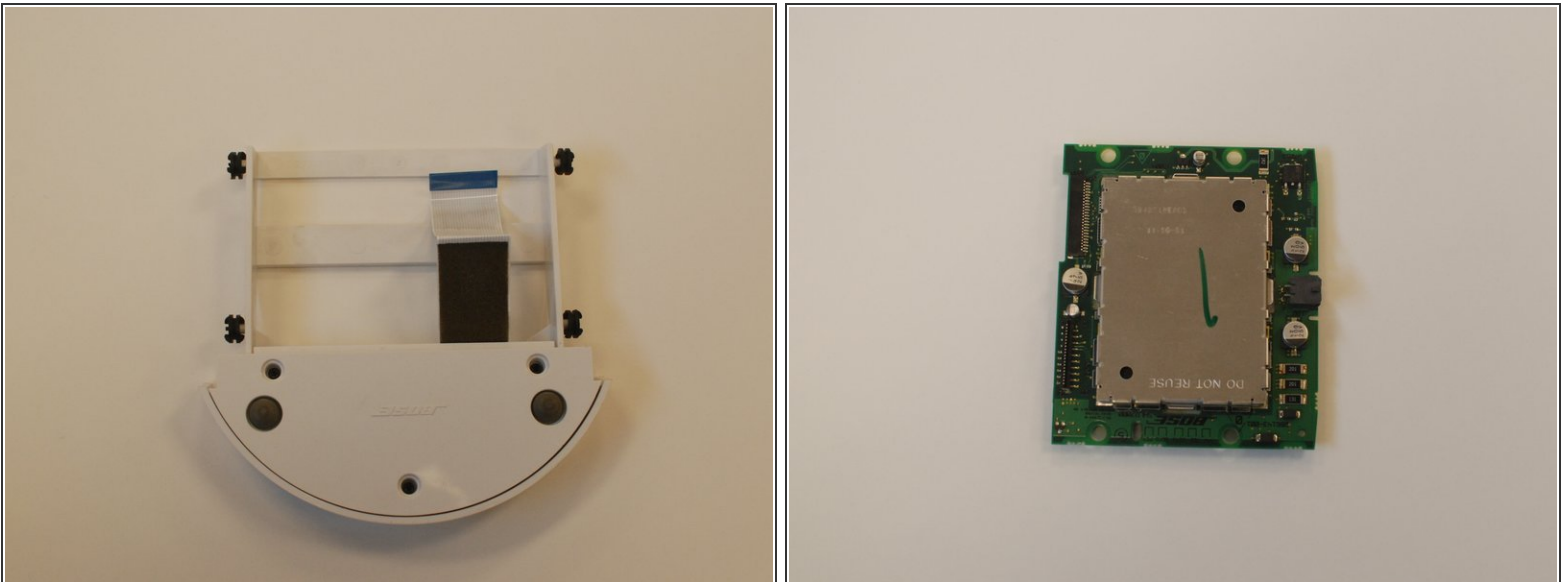
- Once you have removed the bottom plate using a Phillips Screwdriver wiggle the Docking cradle assembly out of the unit. Once the spacers have worked their way out of their proper slots pull the speaker cover off the unit and unhook the 20 C flex cable. This is the cable that is part of your docking station coming out of the Amplifier board.
- Order [SOUND BOARD](#)

Step 3 — Getting slack on the flex cable.



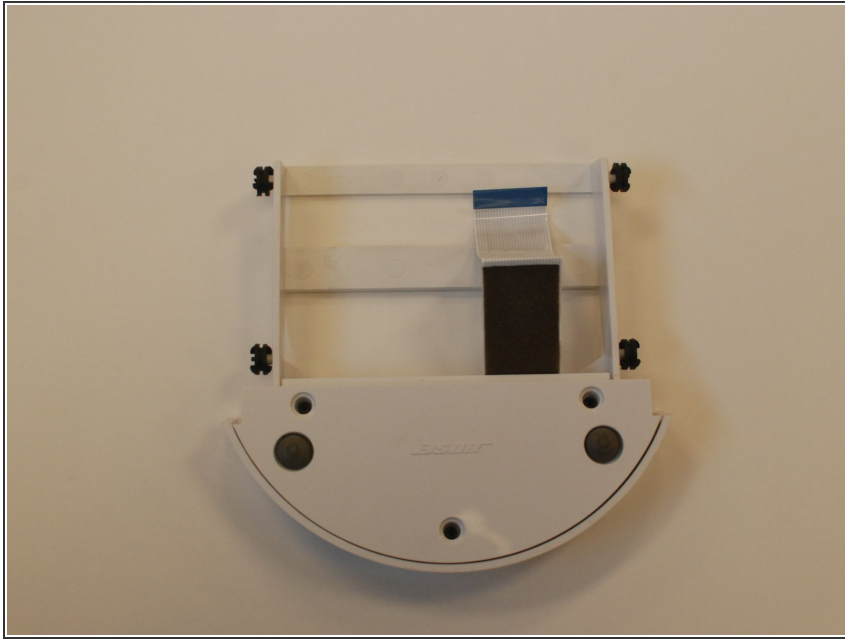
- Now you are ready to unscrew the Amplifier board and lift to create slack in the 20C Flex cable. This is to make installation and hook up to your new sound board easy.

Step 4 — Replacing Sound Board



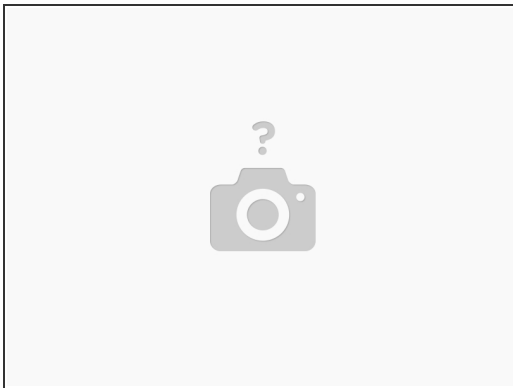
- Now it's time to replace the sound board! Unhook your old Sound board from your Docking cradle assembly. Now that the old Sound board is uninstalled, take your new one and hook it up to the Docking cradle assembly with the 24FF cable. It will be the only cable that is there.

Step 5 — Installing Docking Cradle Assembly



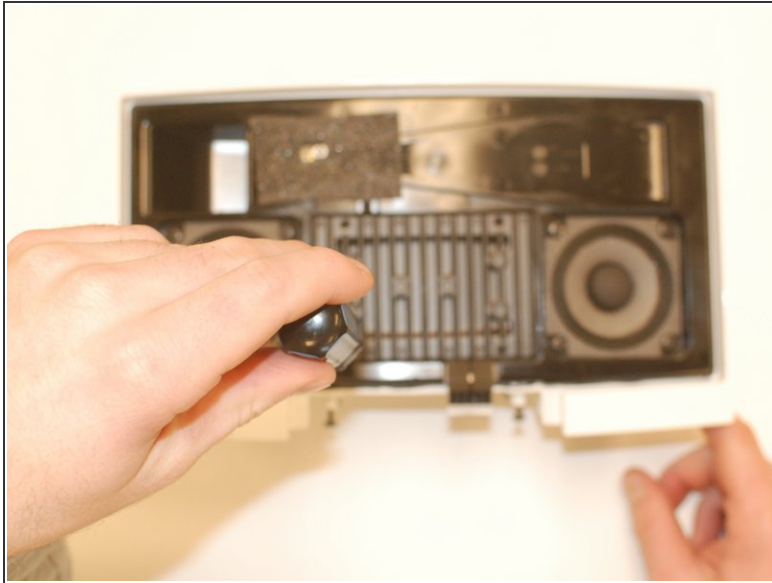
- Hook the Flex cable from the Amplifier board to your Sound Board. Once the connection is solid and secure, Install Docking cradle assembly back into its spacers slots.

Step 6 — Securing Docking Cradle Assembly



- Once the Dock cradle assembly is installed properly take the bottom plate and line it up with the proper holes and find your four Phillips screws and tighten them into there holes.

Step 7 — Securing Amplifier Board



- Feed the slack from your flex cable back behind the Amplifier board by lifting up on it carefully without disconnecting the flex cable from the Sound board. Once that is completed, screw the Amplifier board down snug. Put the speaker cover back on the unit. After this you should have successfully fixed your Bose Docking Station.
- For those who are visual learners here is a great video that simply shows how easy it is to replace the [SOUND BOARD](#)

To reassemble your device, follow these instructions in reverse order.

This document was last generated on 2019-08-22 06:00:45 PM.