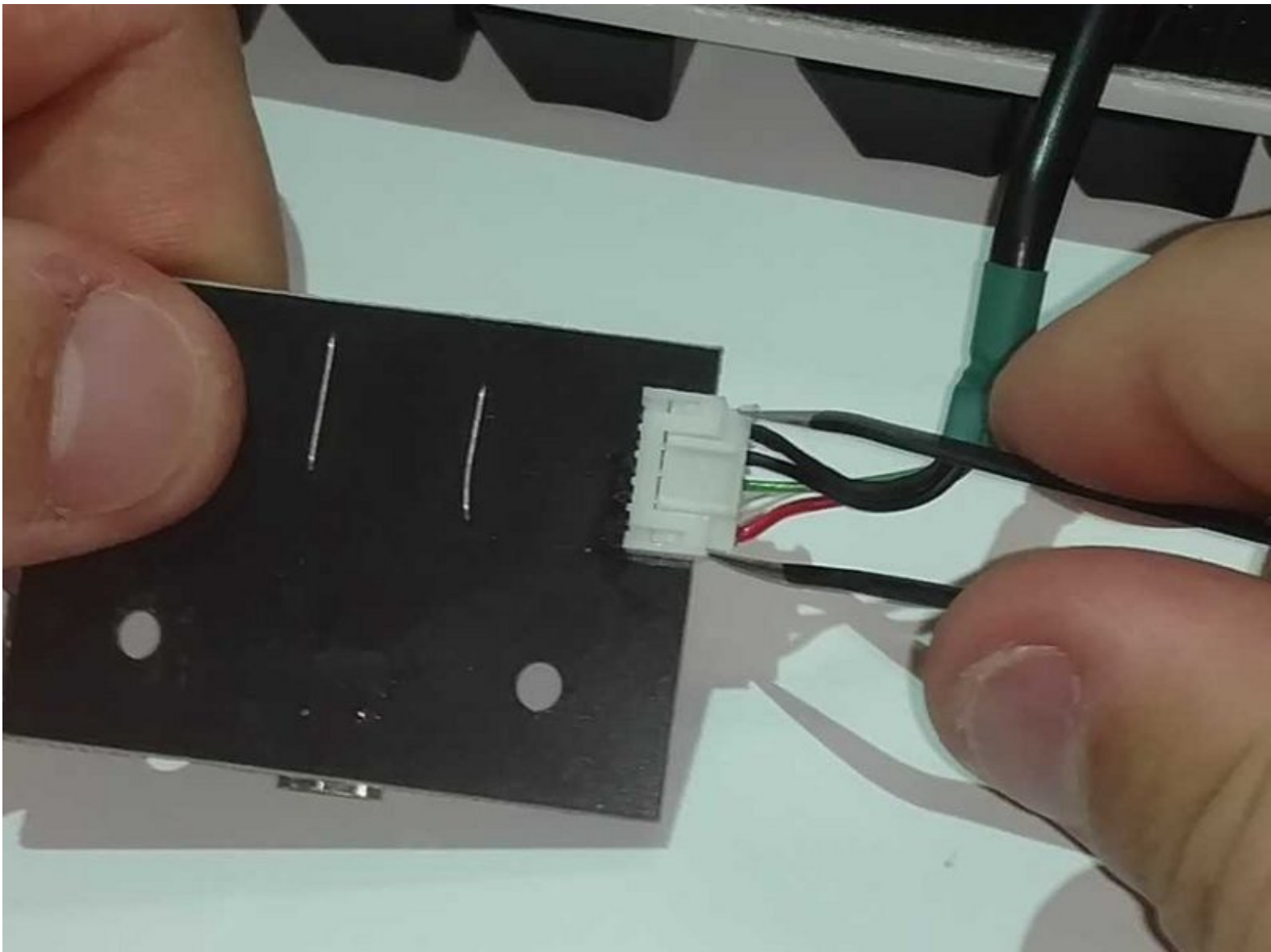




Razer Blackwidow Tournament Edition Chroma USB Port Board Replacement

Use this guide to help you replace the USB port inside your Razer Blackwidow Tournament Edition Chroma.

Written By: Jonathan Stewart



This document was generated on 2019-09-22 08:07:25 AM (MST).

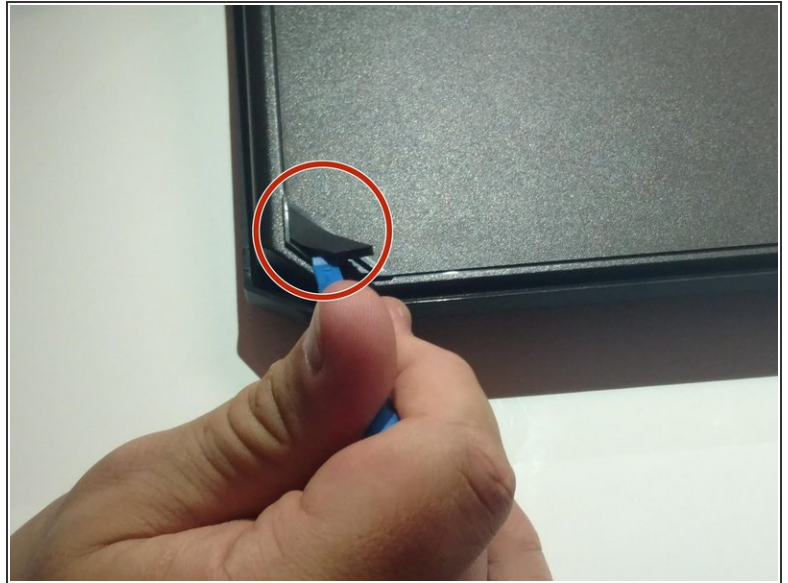
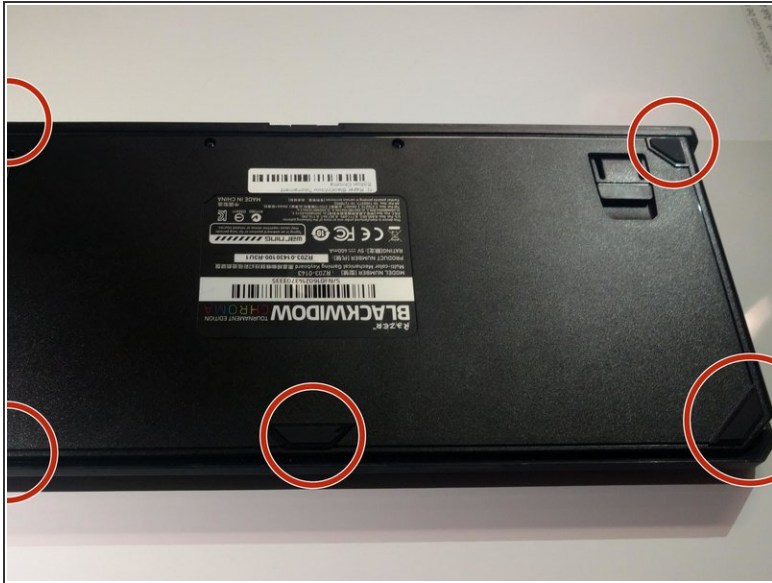
INTRODUCTION

The following guide will demonstrate how to open your Razer Blackwidow Tournament Edition Chroma. You will also learn how to remove and replace the USB port board.

TOOLS:

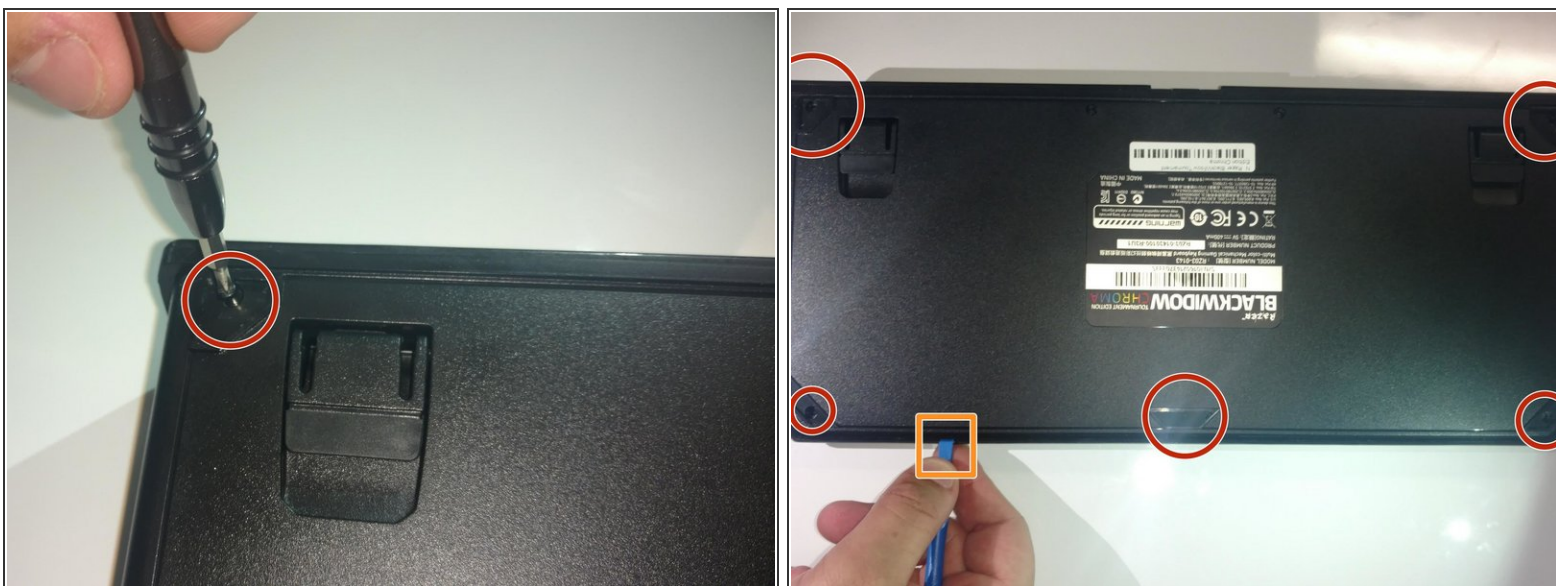
- [Phillips #1 Screwdriver](#) (1)
 - [iFixit Opening Tools](#) (1)
 - [Tweezers](#) (1)
-

Step 1 — Rubber Feet



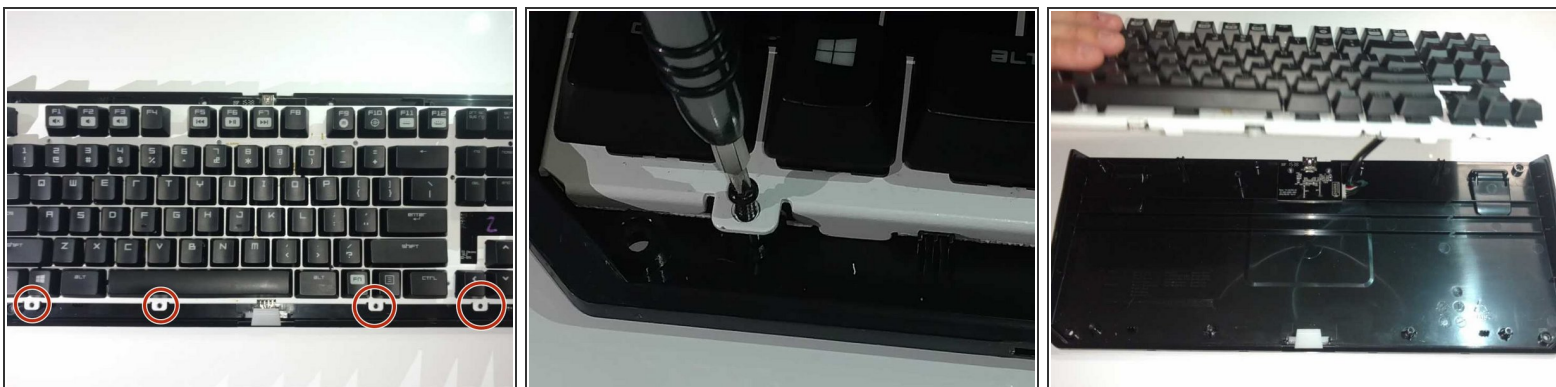
- Turn the keyboard over so that it is lying flat on its face.
- Use the iFixit opening tool to pry the rubber feet off the keyboard.

Step 2 — Front Panel



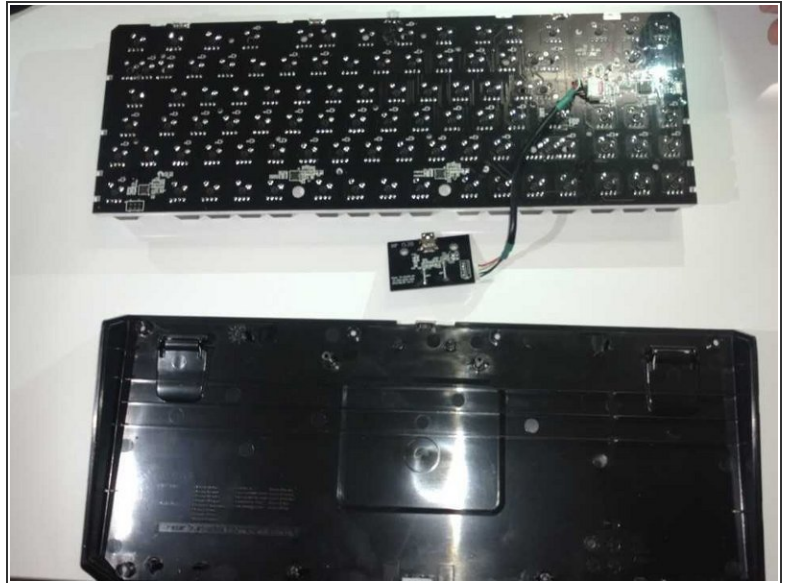
- Use a Phillips #1 screwdriver to remove the six screws on the back of the keyboard.
- Then use the IFixIt opening tool to pry off the front panel.
- Place the keyboard over so the keys are facing up.
- Lift both ends of the keyboard up removing the front panel.

Step 3 — Back Panel



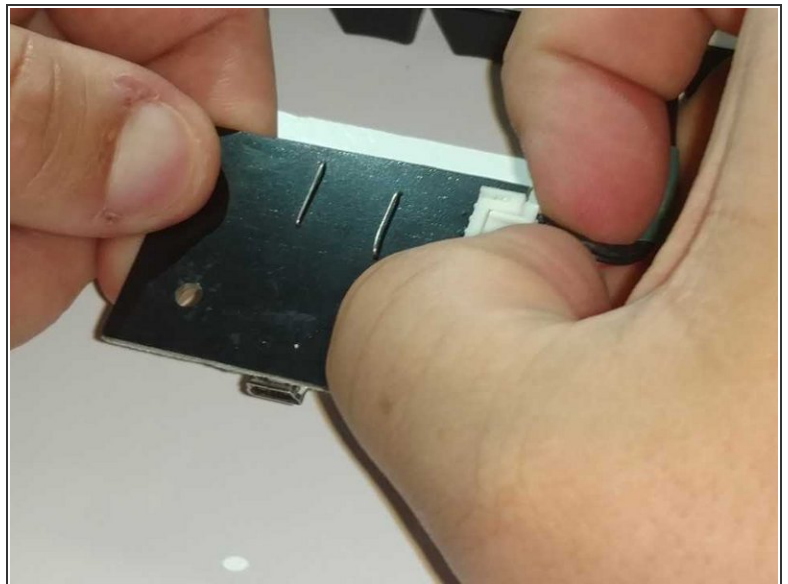
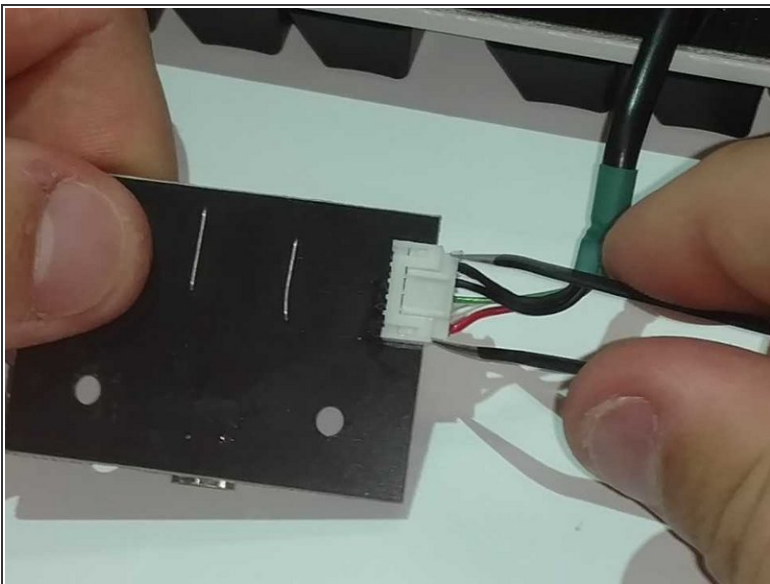
- Use a Philips #1 Screwdriver to remove the four screws located below the keys.
- Lift the main circuit board and flip it over, placing it on its top.
- ⚠ Be cautious of the wire connected to the USB Port Board.

Step 4



- Use a Philips #1 Screwdriver to remove the two screws located on the bottom of the USB Port Board.
- Lift the USB Port Board and place it to the side.

Step 5 — USB Port



- Pull on the wire connector until it disconnects from the USB port board.
- ⓘ You may use either your hands or a pair of tweezers to separate the white connection clip.

This document was generated on 2019-09-22 08:07:25 AM (MST).

To reassemble your device, follow these instructions in reverse order.