



Gateway Solo 1450 Battery Replacement

This replacement guides goal is to help users replace an old and tired battery on their Gateway Solo 1450

Written By: Timothy Post



INTRODUCTION

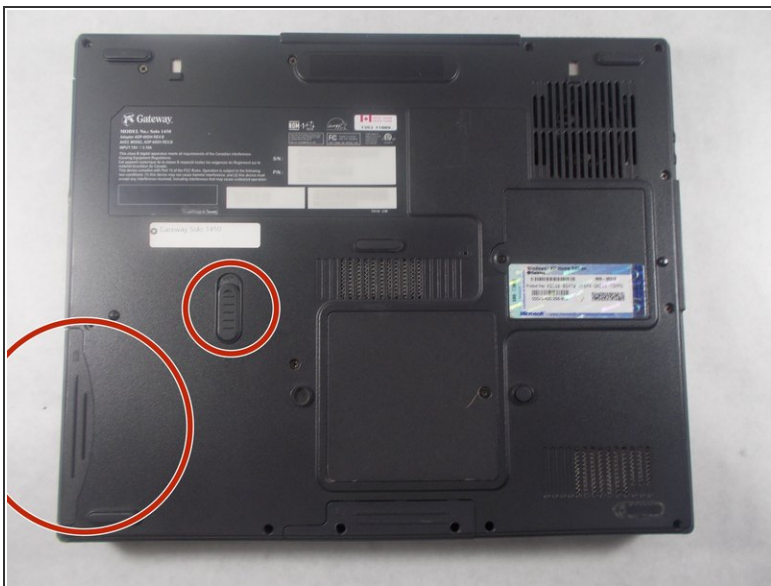
This guide is a replacement guide for the Gateway Solo 1450 Laptop. This guide provides step by step instructions on how to remove and replace the laptop's battery.

Step 1 — Battery



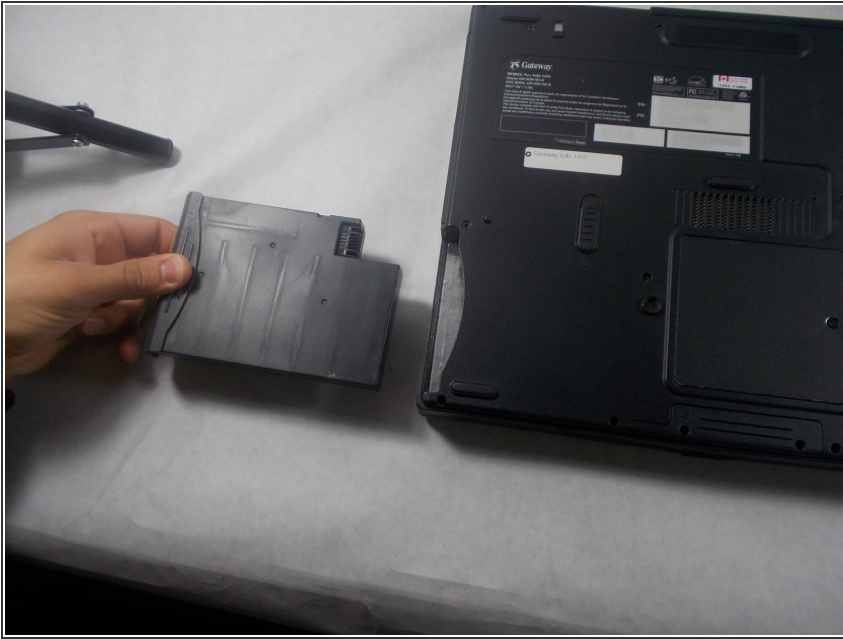
- ⚠ Make sure the device is powered down and disconnected from any power sources. Doing this will eliminate any electrical hazards while working on the device.
- First it is necessary to locate the battery release button. With the laptop orientated so that the screen hinges are facing up the button is located about halfway up the laptop and slightly to the left.

Step 2



- The next step is to simultaneously push up on the battery release button and to pull out on the battery itself. If this is not done simultaneously then the battery will not budge.

Step 3



- To fully free the battery it is necessary to firmly grasp the battery and give it a firm tug.

To reassemble your device, follow these instructions in reverse order.

This document was last generated on 2019-07-27 10:44:30 AM.