



Olympus OM-D E-M10 Mark II SD Card Door Replacement

Replace the SD Card Door to keep battery and SD card protected.

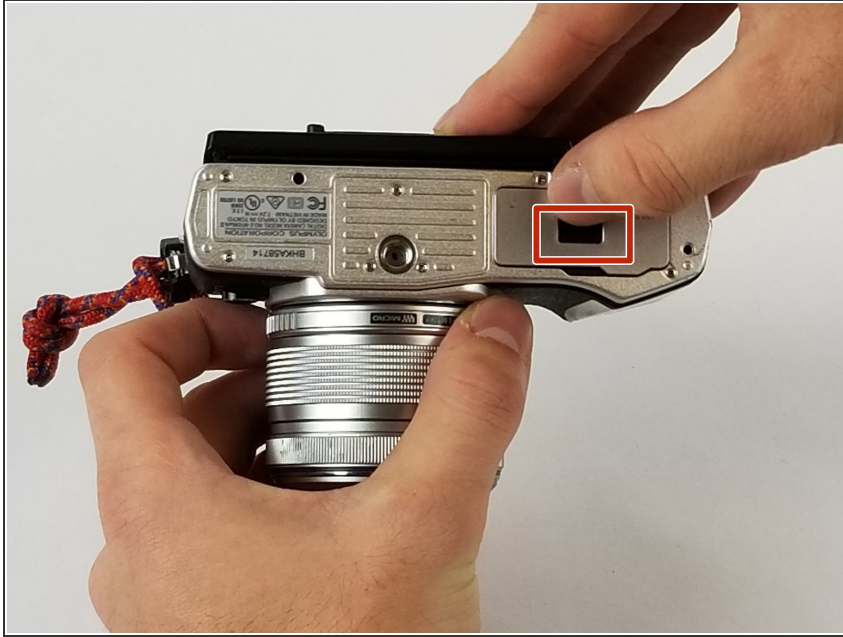
Written By: Nicolle Oliver



INTRODUCTION

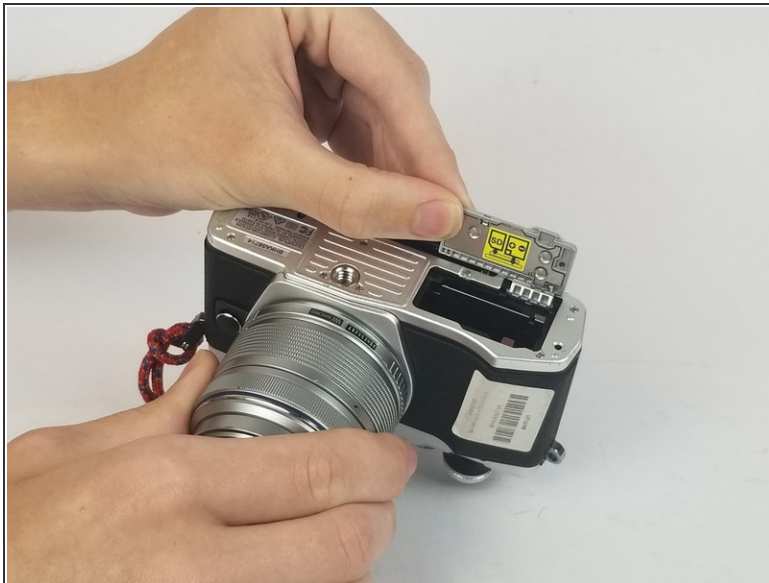
The SD Card Door allows access to both the camera's SD Card and the battery. In order to keep the battery and SD card protected from outside damage, the SD Card Door needs to be intact. If the SD Card Door has been damaged, you can use this guide to ensure you are properly removing and replacing it.

Step 1 — SD Card Door



- Open battery/SD card door latch by moving the black button in the direction of the arrow, towards the camera screen.

Step 2



- Grab the SD card door and remove it by pulling it away from the body of the camera.

To reassemble a new SD card door to your device, follow these instructions in reverse order.

