



Dell Inspiron 1100 Display Assembly Removal

Written By: Terrence15



INTRODUCTION

In this guide, we will show you how to remove the Display Assembly.

TOOLS:

- [Phillips #0 Screwdriver](#) (1)
-

Step 1 — Remove the Screws

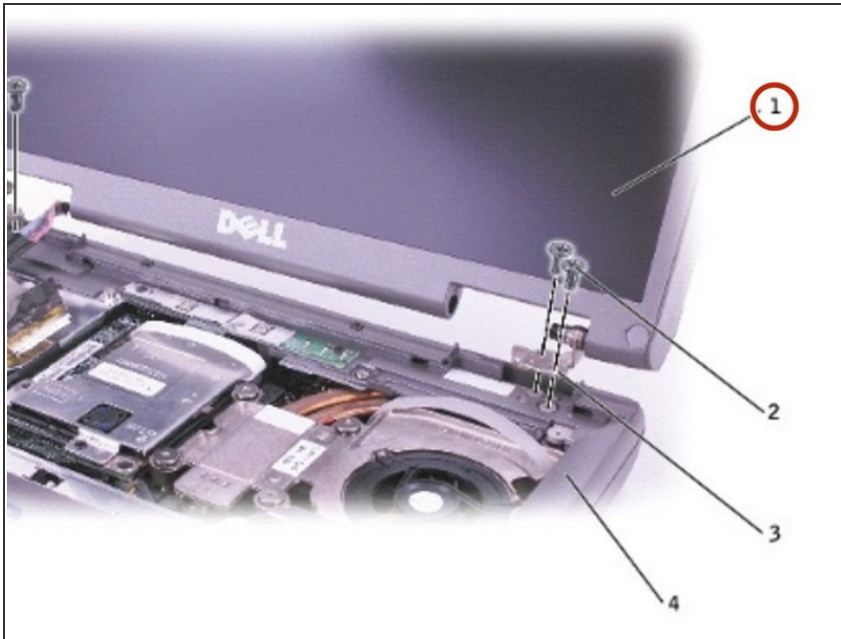


⚠ Follow the instructions in ["Preparing to Work Inside the Computer."](#)

⚠ **CAUTION:** To prevent static damage to components inside your computer, discharge static electricity from your body before you touch any of your computer's electronic components. You can do so by touching an unpainted metal surface.

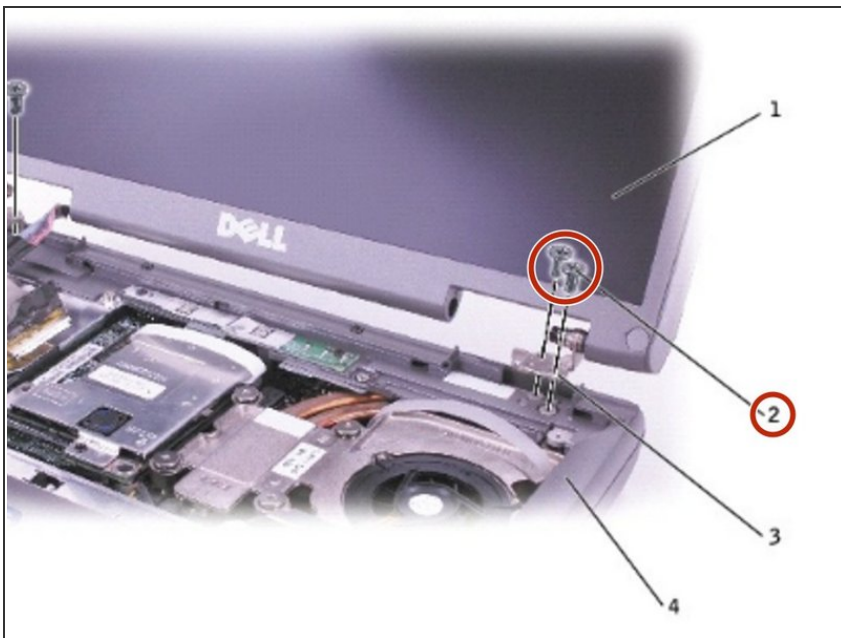
- Close the display.
- From the back of the computer, remove the two M2.5 x 5-mm screws labeled "circle D."

Step 2 — Opening the Display Assembly



- Open the display assembly approximately 180 degrees, and support the display assembly so that it does not open past this position.

Step 3 — Remove the Screws



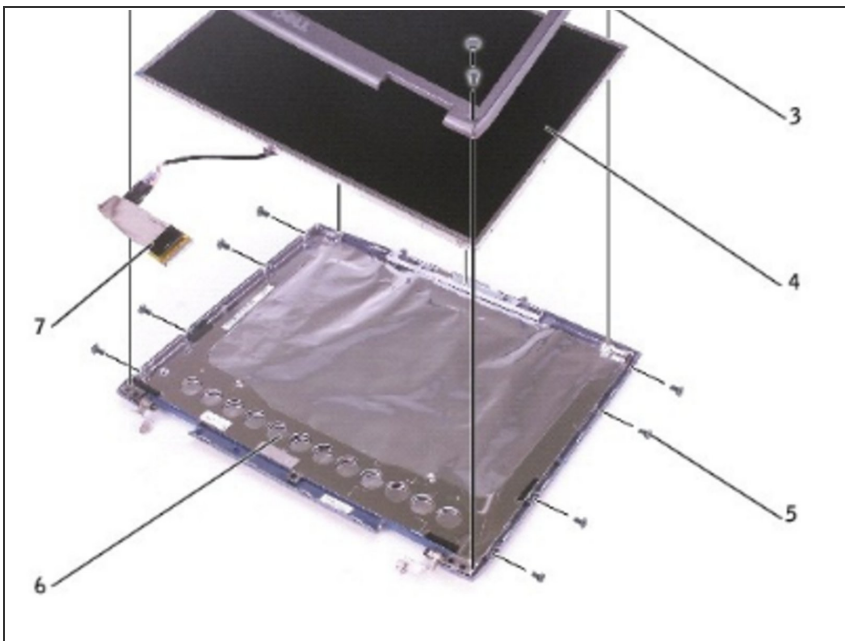
- Remove the two M2.5 x 5-mm screws from each hinge bracket.

Step 4 — Disconnecting the Cable



- Pull straight up on the pull-tab that is attached to the display-feed flex cable to disconnect the cable from the system board.

Step 5 — Lifting the Display Assembly



- Lift the display assembly up and out of the computer base.

To reassemble your device, follow these instructions in reverse order.