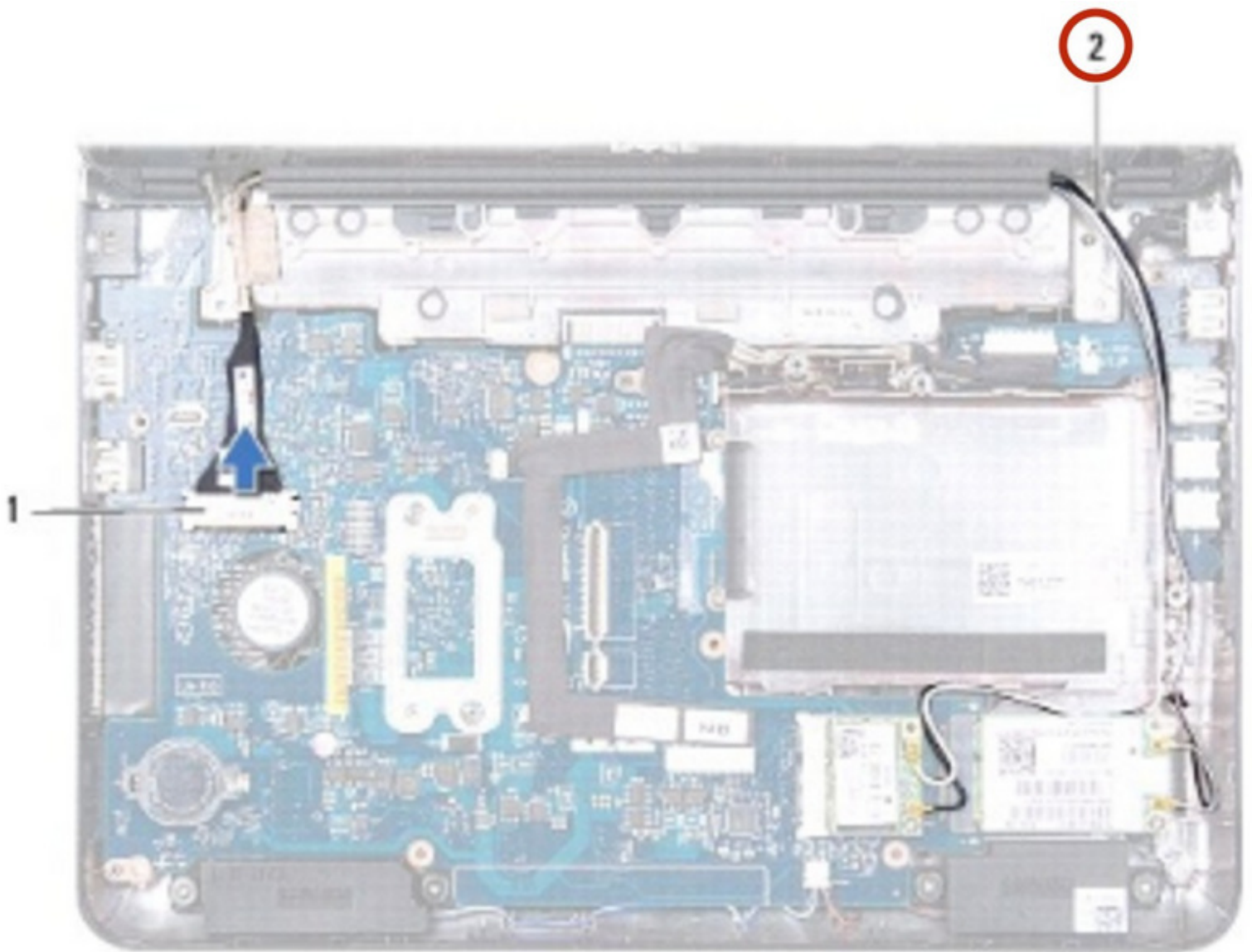




Dell Inspiron 1122 M102z Display Assembly Replacement

Written By: Teren Wallace



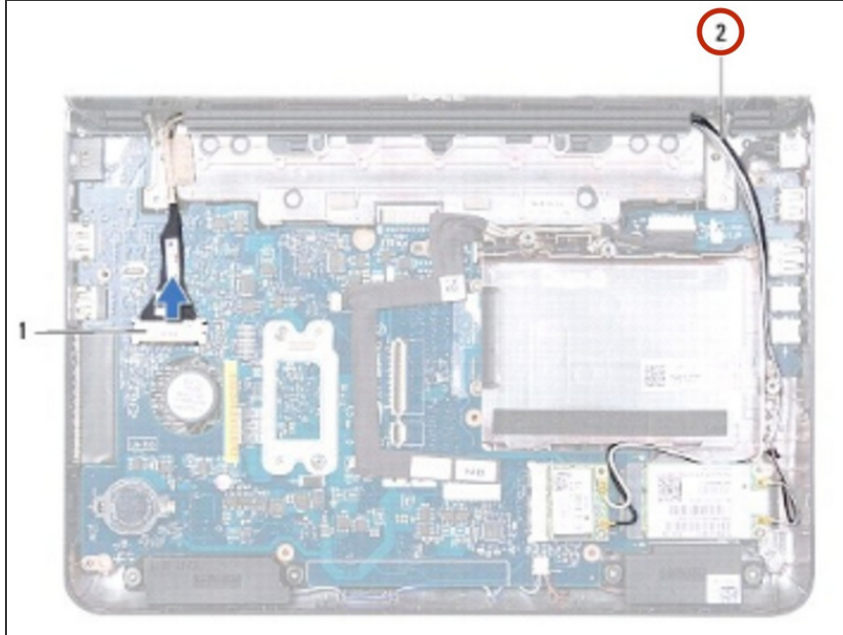
INTRODUCTION

In this guide, we will show you how to remove and replace the Display Assembly.

TOOLS:

- [Phillips #0 Screwdriver](#) (1)
-

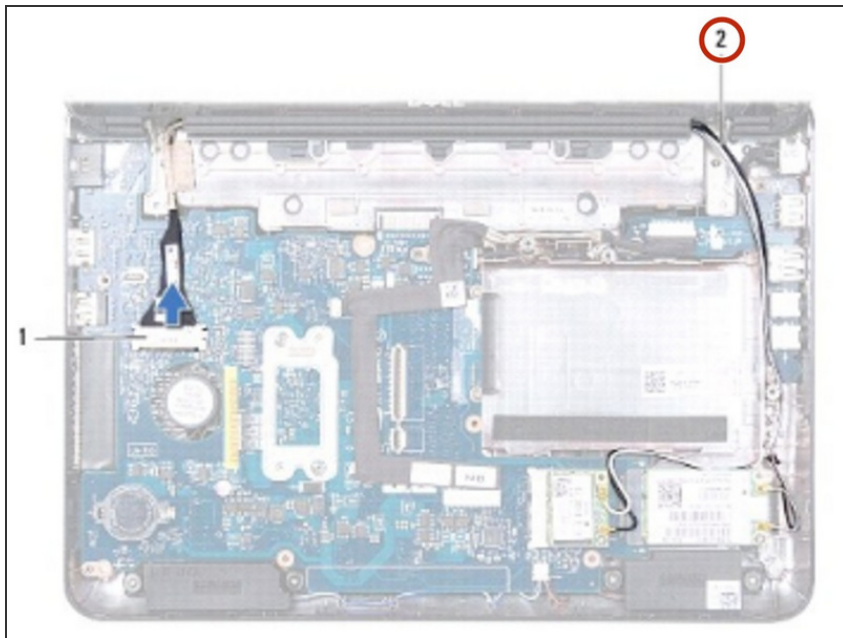
Step 1 — Disconnecting the Mini-Card Antenna Cables



⚠ Follow the instructions in [Before You Begin](#).

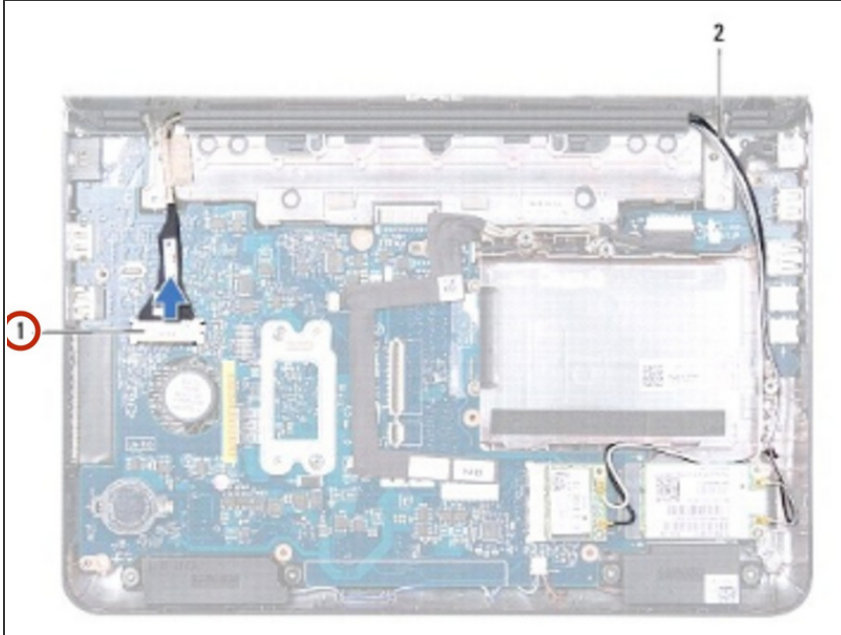
- Disconnect the Mini-Card antenna cables from the Mini-Card(s).

Step 2 — Dislodging the Mini-Card Antenna Cables



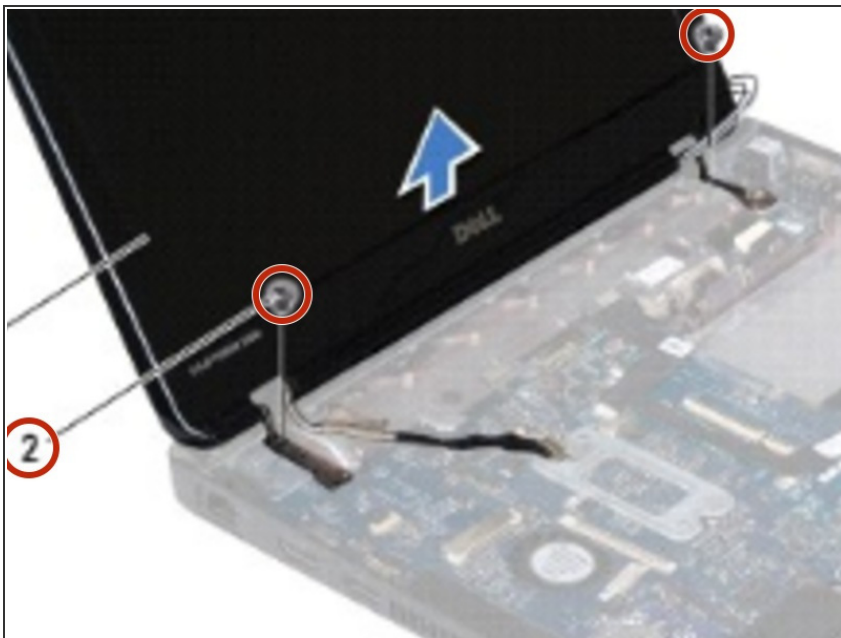
- Make note of the cable routing and carefully dislodge the Mini-Card antenna cables from the routing guides.

Step 3 — Disconnecting the Display Cable



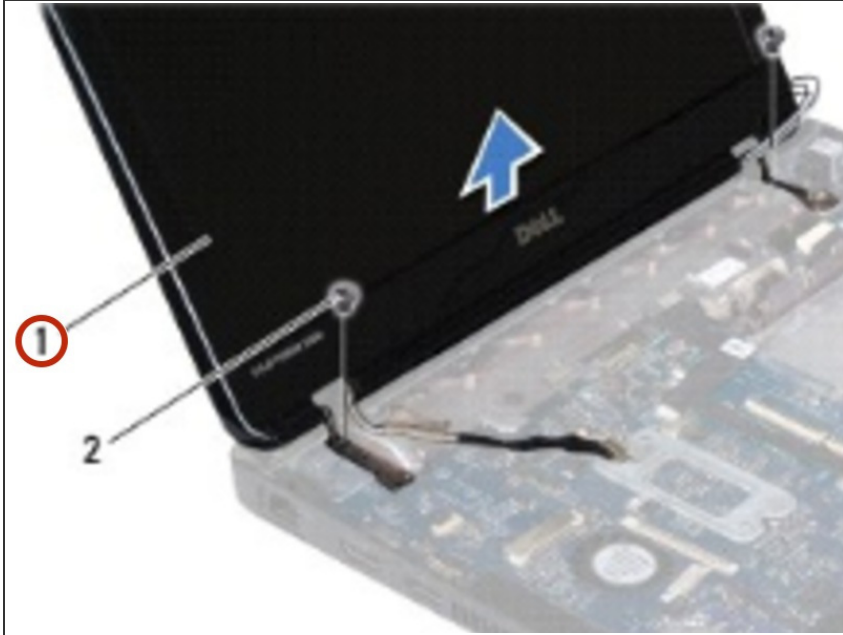
- Disconnect the display cable from the system board connector.

Step 4 — Remove the Screws



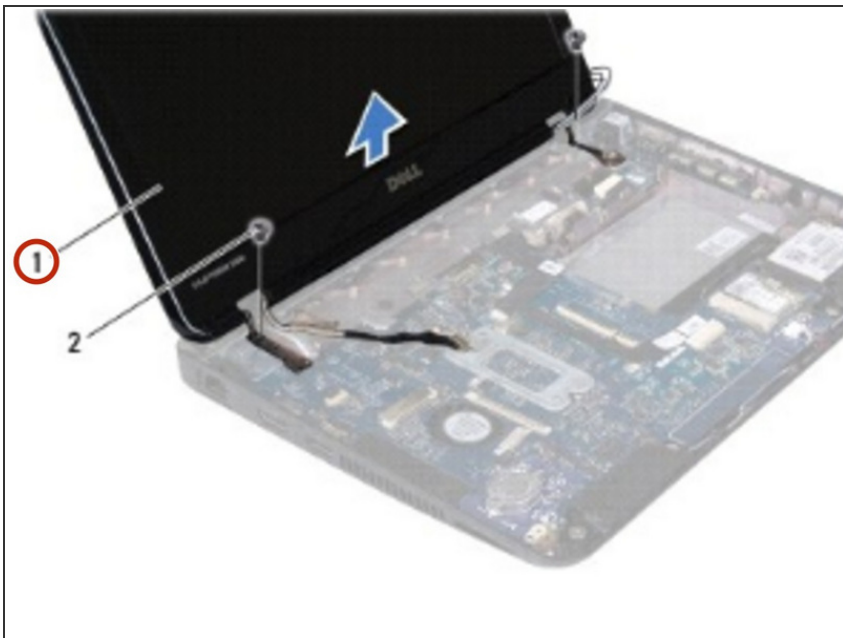
- Remove the two screws (one on each side) that secure the display assembly to the computer base.

Step 5 — Removing the Display Assembly



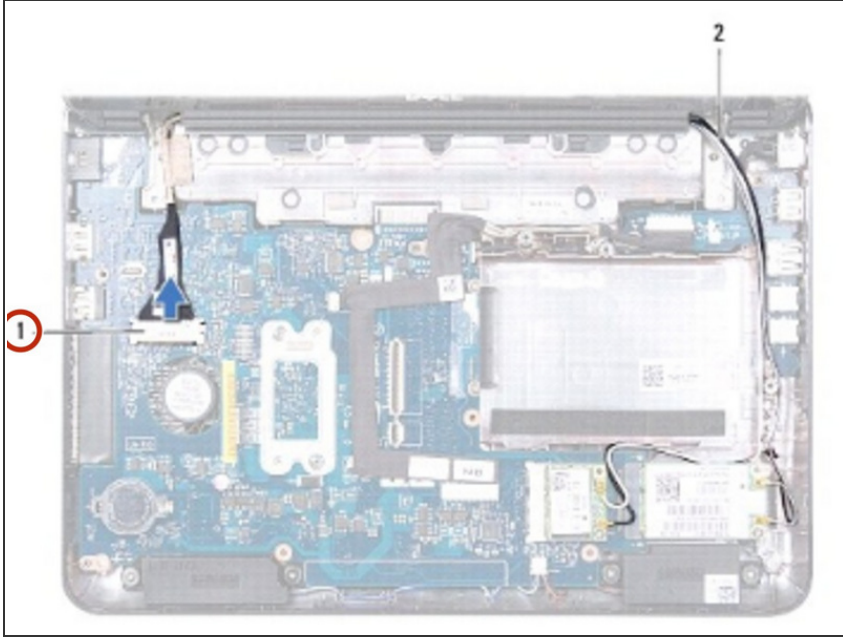
- Lift and remove the display assembly off the computer base.

Step 6 — Placing the Display Assembly



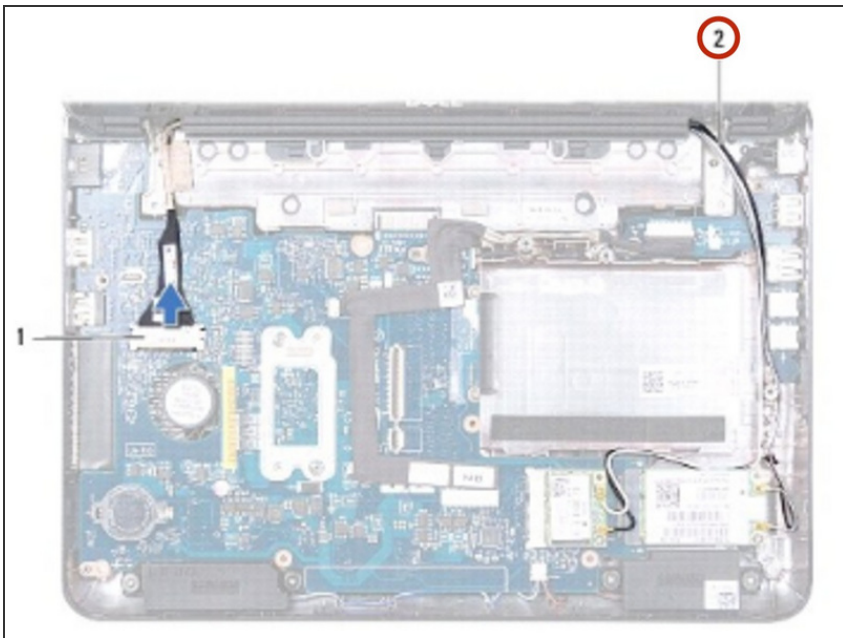
- Place the **NEW** display assembly in position and replace the two screws (one on each side) that secure the display assembly to the computer base.

Step 7 — Connecting the Display Cable



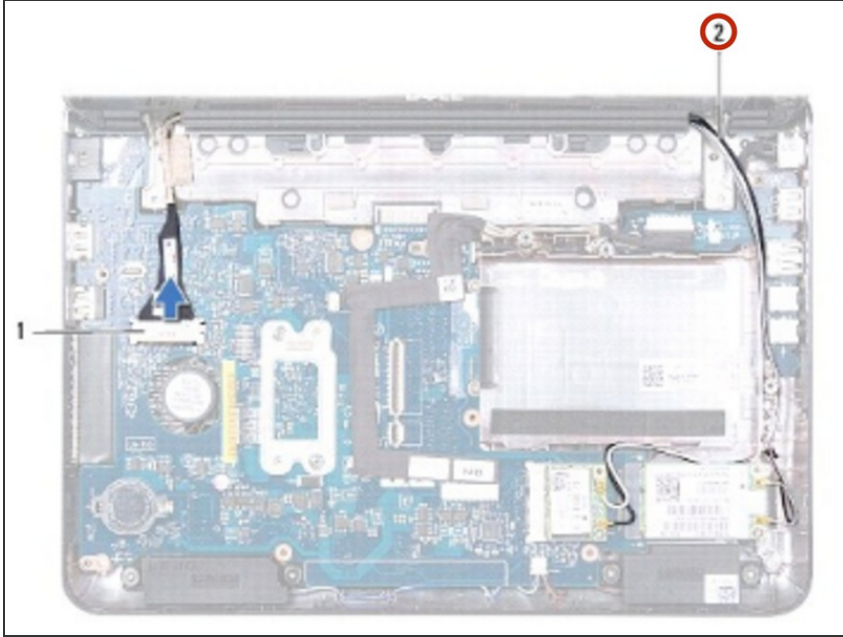
- Connect the display cable to the system board connector.

Step 8 — Routing the Mini-Card Cables



- Route the Mini-Card antenna cables through the routing guides on the computer base.

Step 9 — Conencting the Mini-Card Antenna Cables



- Connect the Mini-Card antenna cables to the Mini-Card(s).

To reassemble your device, follow these instructions in reverse order.

This document was last generated on 2018-06-06 06:02:47 AM.