



Samsung SCV-VLUUST50 Flash Capacitor Replacement

This is a guide to replace the flash capacitor.

Written By: Evert Jordan



INTRODUCTION

Is your flash weak or not working at all? It could be your flash capacitor. Here's a replacement guide to help.

TOOLS:

- [Phillips #00 Screwdriver](#) (1)
 - [Magnetic Project Mat](#) (1)
 - [Flush Wire Cutters](#) (1)
 - [Portable Soldering Iron](#) (1)
 - [Solder](#) (1)
-

Step 1 — Cover



- Unscrew all visible screws indicated by red circles with a #00 Phillips driver.
- Slide memory card cover and unscrew hidden screw underneath with a #00 Phillips driver.

Step 2



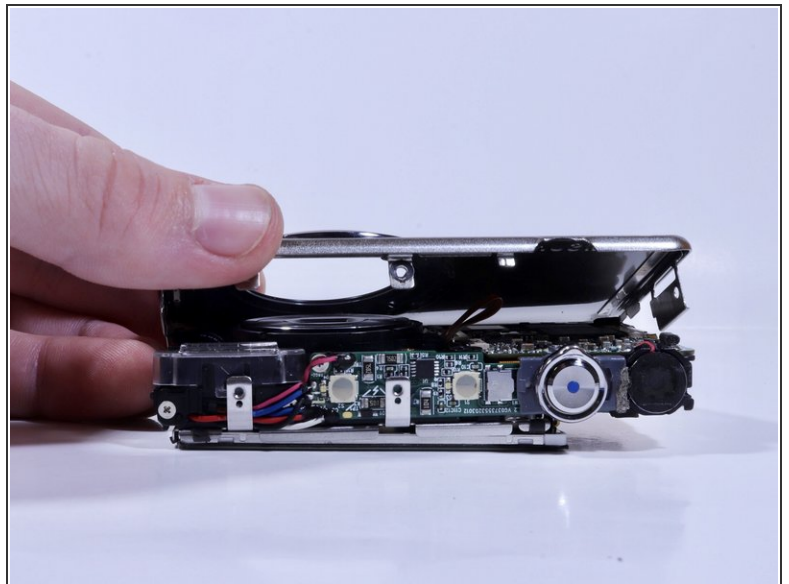
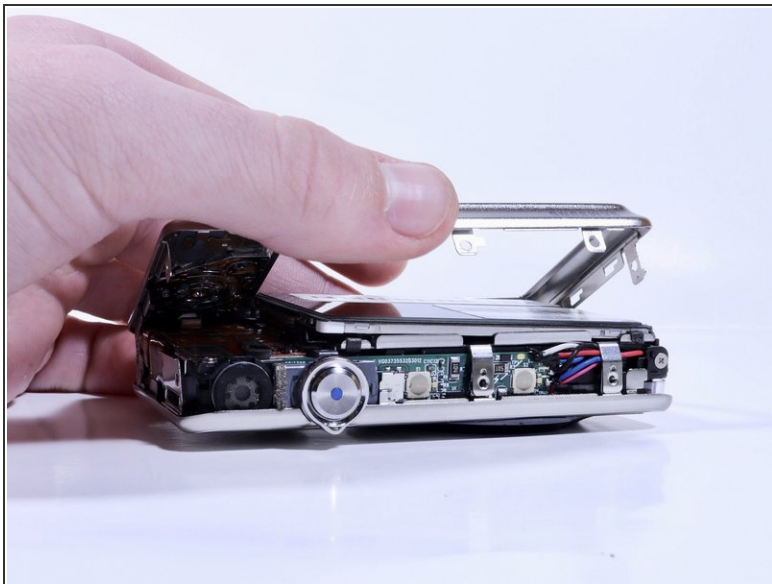
- Remove the flat side panel by applying gentle pressure toward the bottom of the camera.
- Remove the corner panel by applying pressure away from the shutter button.
- ⓘ The memory card cover will come off with the corner panel.
- Remove the top panel by applying gentle pressure away from the shutter button.

Step 3



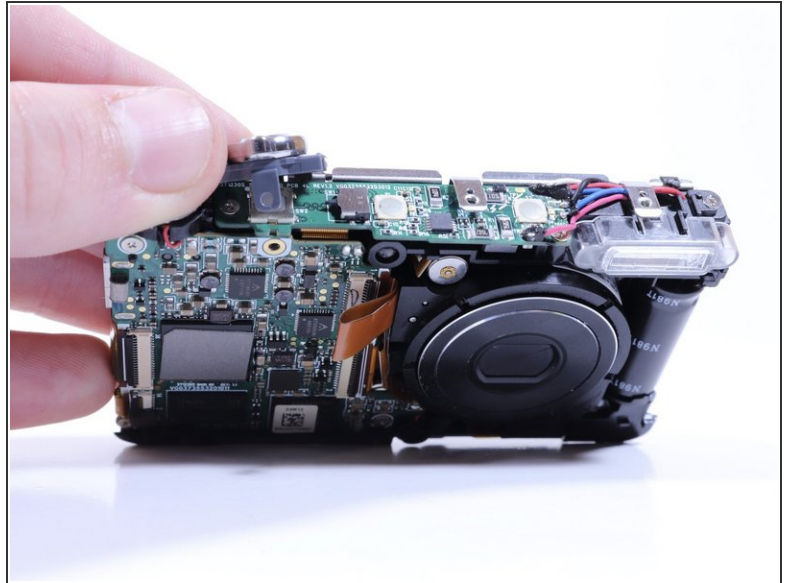
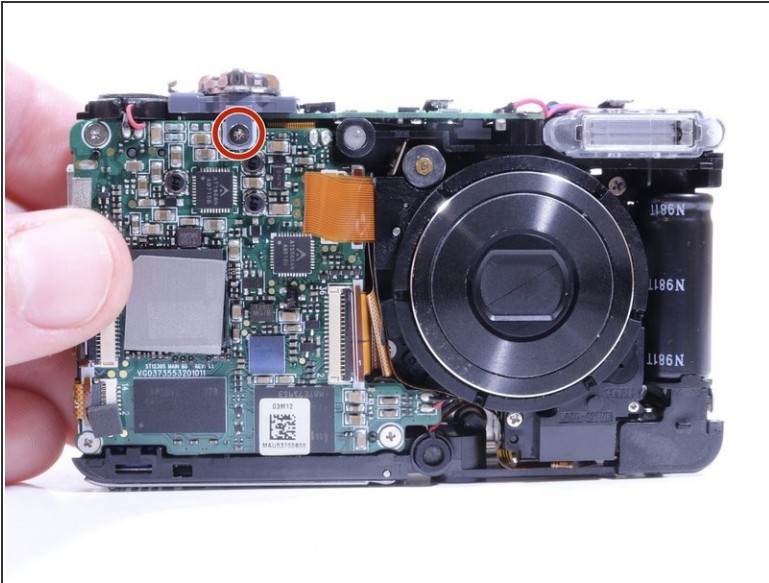
- Remove screws beneath the top panel indicated by red circles with a #00 Phillips driver.

Step 4



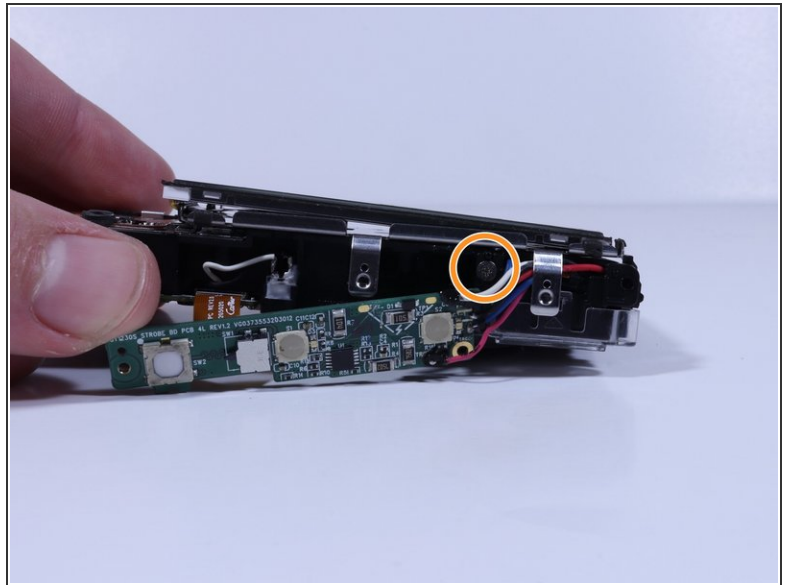
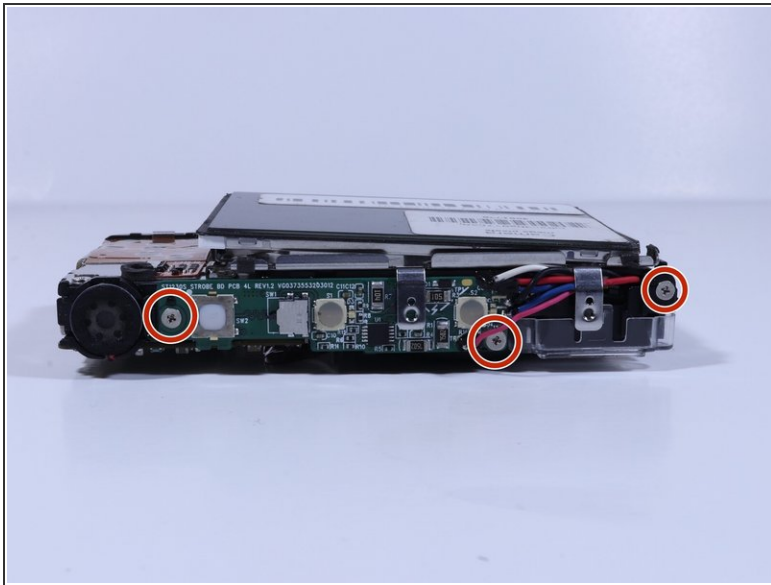
- Remove the front and back covers by pulling them straight apart.

Step 5 — Flash Capacitor



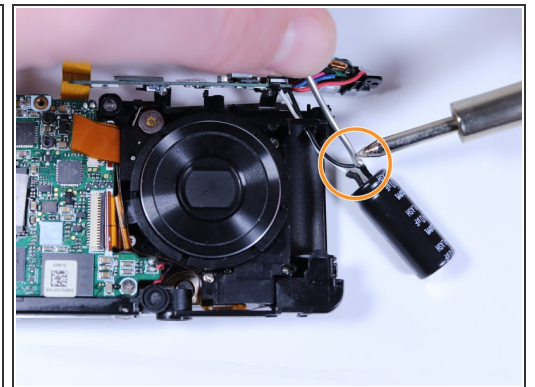
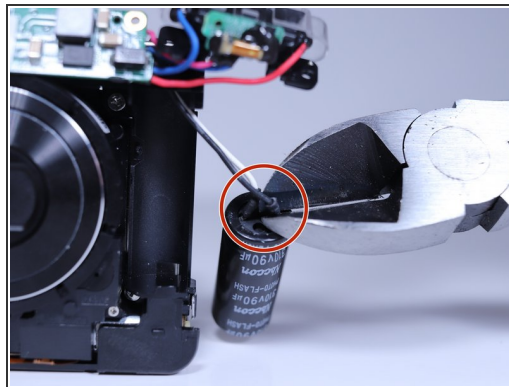
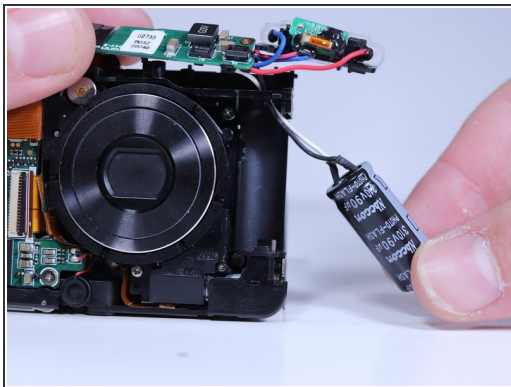
- Remove the screw securing the shutter button.
- Lift the shutter button to remove it.

Step 6



- Remove the 3 visible screws with a Phillips #000 Driver
- Move the circuitry and wires out of the way to expose another screw, and remove it with the same driver.

Step 7



- Pull the flash capacitor out of its compartment to expose the wires connected to it.
- Cut the connecting wires with wire cutters.
- Solder the wires to the new power source with a soldering iron and electrical solder.

To reassemble your device, follow these instructions in reverse order.