



Lenovo Essential G570 CD-Drive Replacement

How to replace a Lenovo Essential G570 CD drive.

Written By: Lucio



INTRODUCTION

CD Drives have various reasons for not working any longer. Luckily, this guide will show how easy it is to install a new one.

TOOLS:

- [Phillips #0 Screwdriver](#) (1)
-

Step 1 — Battery



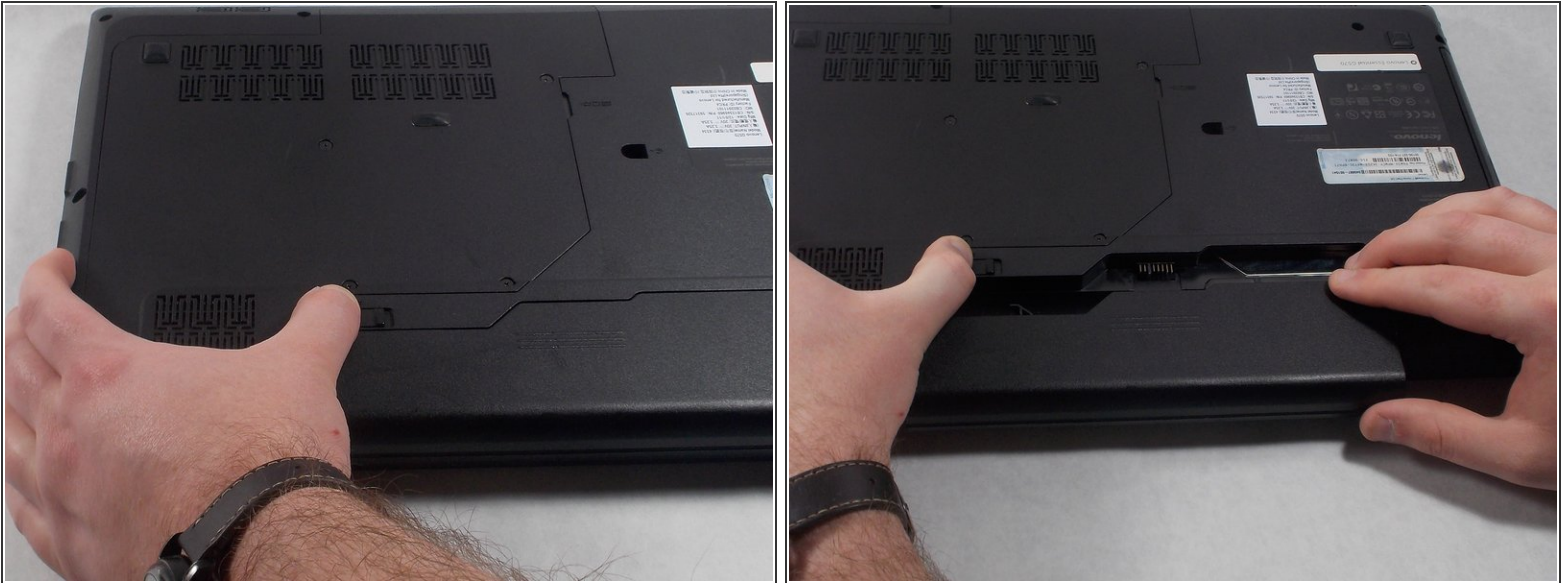
- Turn off the laptop.
- Disconnect the charging cable.
- ⚠ Failure to unplug the cable could result in electric shock.
- Turn the computer upside down.

Step 2



- Locate the two switches that lock the battery.
- Push the right switch outwards to unlock the battery.

Step 3



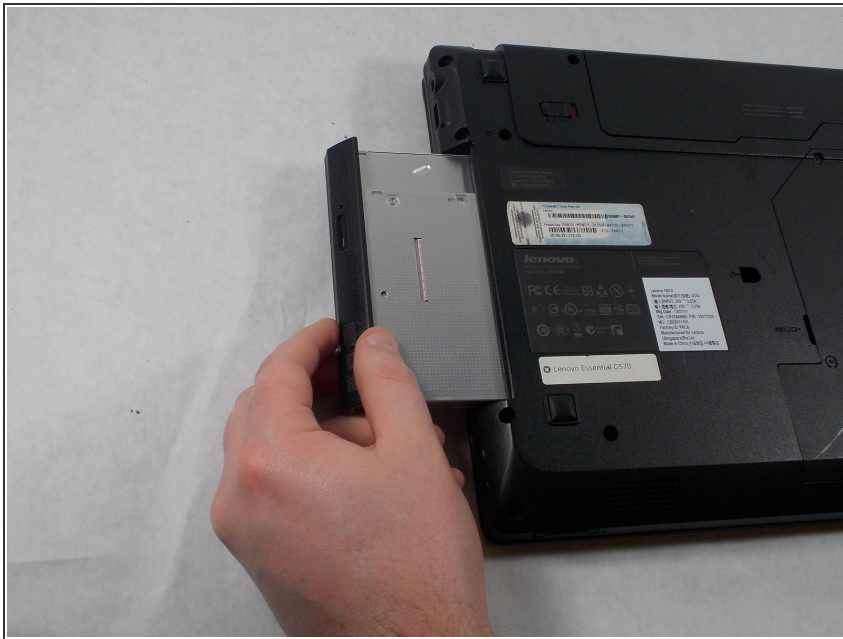
- Push and hold the left switch outwards to unlock the battery.
- Pull the battery away from the computer.

Step 4 — CD-Drive



- Remove the 9mm Phillips #0 screw holding the CD drive in place.

Step 5



- Slide out the entire CD drive from the body of the laptop.

To reassemble your device, follow these instructions in reverse order.

This document was last generated on 2019-07-13 07:25:49 AM.