



XPS M2010 MXP061 Cosmetic Cover and Top Cover Replacement

How to remove both the cosmetic and top covers of the Dell XPS M2010 MXP061. These must be removed to replace the hard drives and other components.

Written By: William Daniels



INTRODUCTION

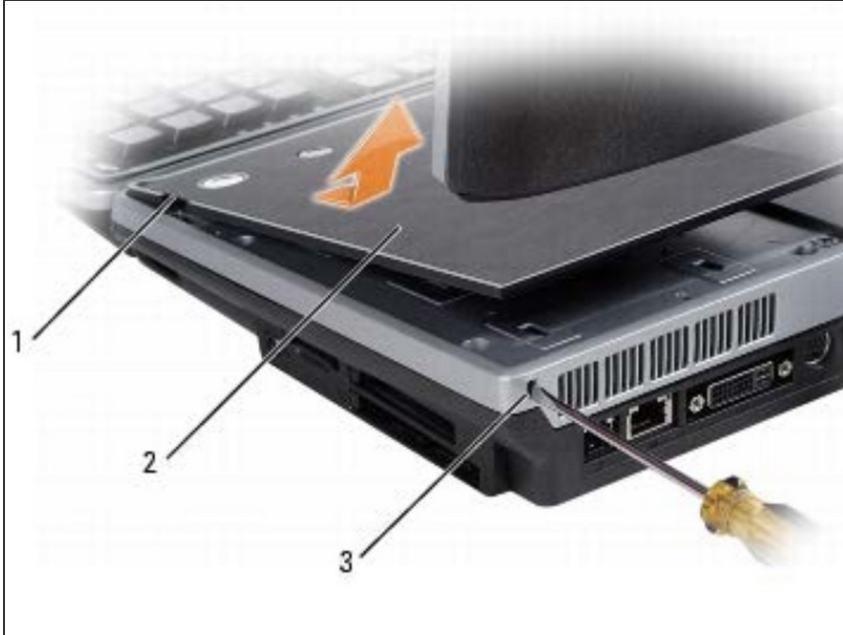
How to remove both the cosmetic and top covers of the Dell XPS M2010 MXP061. These must be removed to replace the hard drives and other components.

The information and pictures in this guide have been taken from the service manual from this device, listed on the iFixit product page. If you need any additional information on disassembling this device, please consult the service manual.

TOOLS:

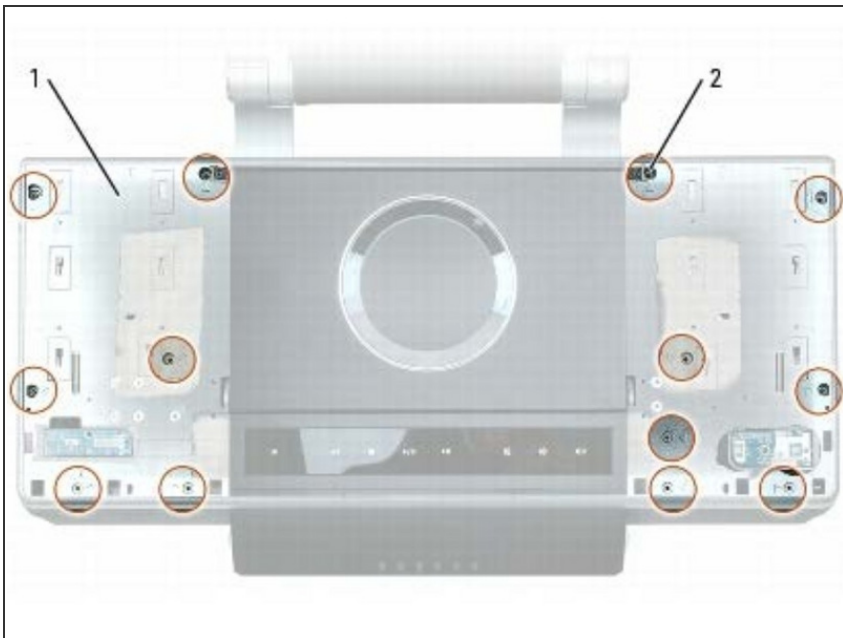
- [2.5 mm Flathead Screwdriver](#) (1)
-

Step 1 — Removing the Cosmetic Cover



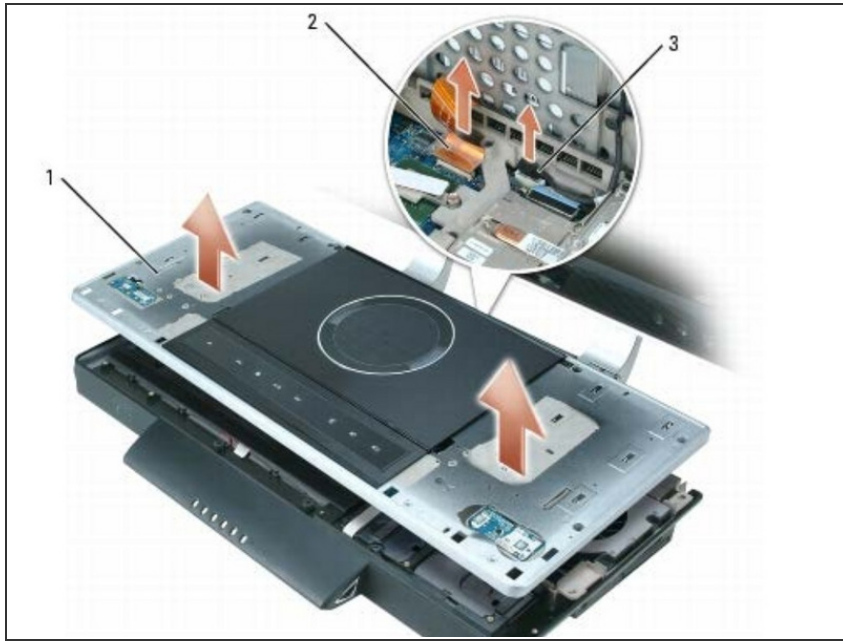
- After turning off the computer and opening the display, remove the keyboard from the computer.
- With a flat-head screwdriver, press in the cover-release slot (#3) on the side of the computer.
- While holding the screwdriver in (so that the button inside the slot is still being held), lift up the cosmetic cover (#2) by the cosmetic-cover notch (#1).

Step 2 — Removing the Top Cover: Screws



- Unscrew the six M2.5 x 5-mm screws on the left side (#1) of the top cover, then unscrew the seven M2.5 x 5-mm screws on the right side (#2) of the top cover.

Step 3 — Removing the Top Cover: Cables



i Slightly lift up the top cover, but do not fully remove it. Two cables are connected to the top cover, and they could be damaged if the top cover is improperly removed.

- While holding the top cover up, unplug the two cable connectors by pulling up on the pull loop or connector.

To reassemble your device, follow these instructions in reverse order.

This document was last generated on 2018-06-23 03:32:54 AM.