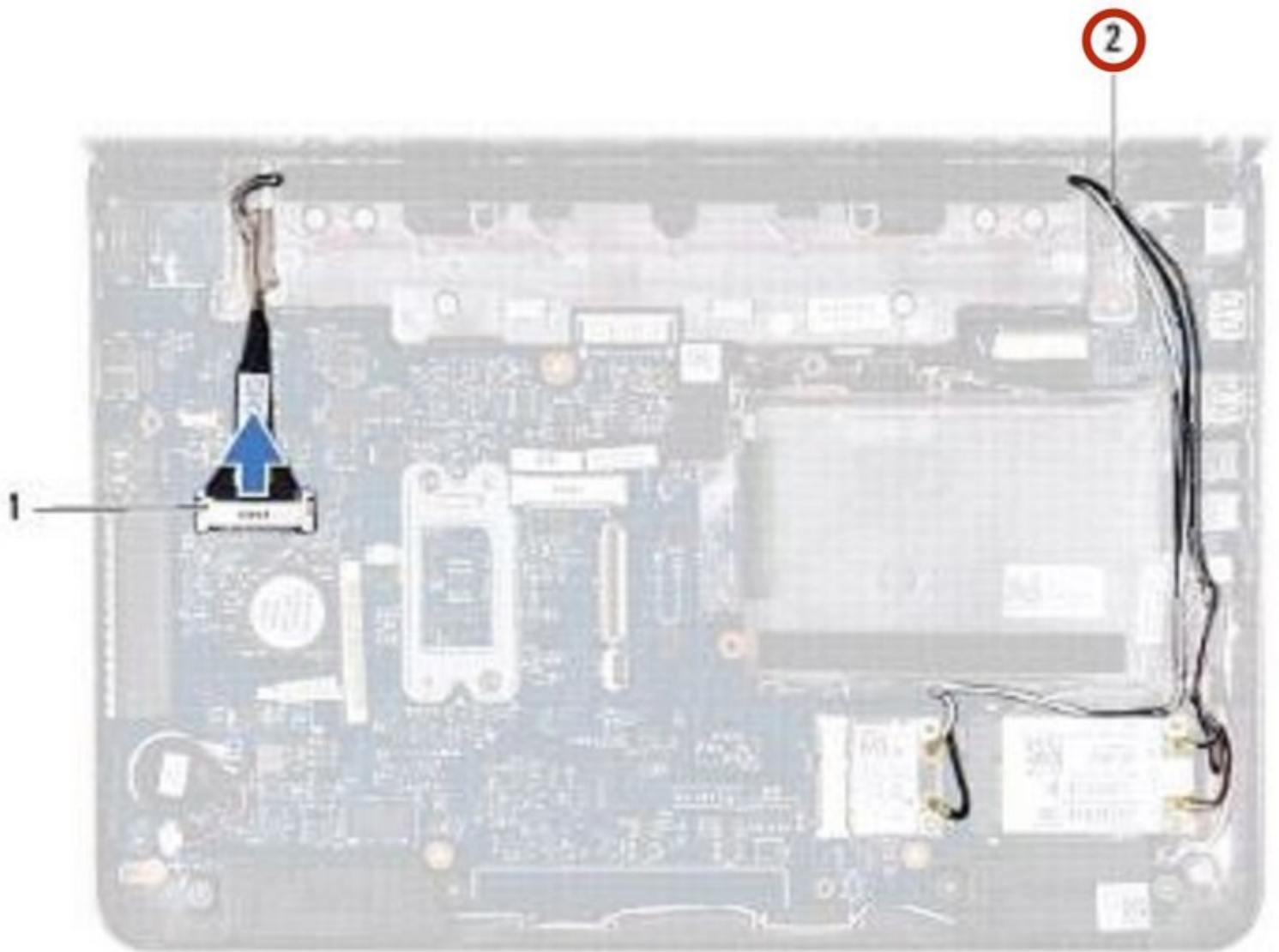




Dell Inspiron 11z 1120 Display Assembly Replacement

Written By: Terrence15



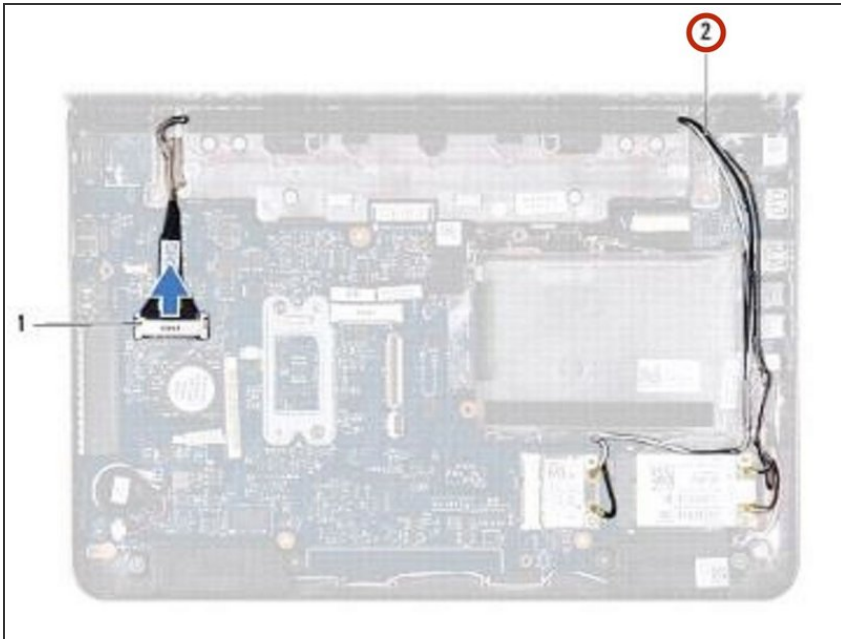
INTRODUCTION

In this guide, we will show you how to remove and replace the Display Assembly.

TOOLS:

- [Essential Electronics Toolkit](#) (1)
-

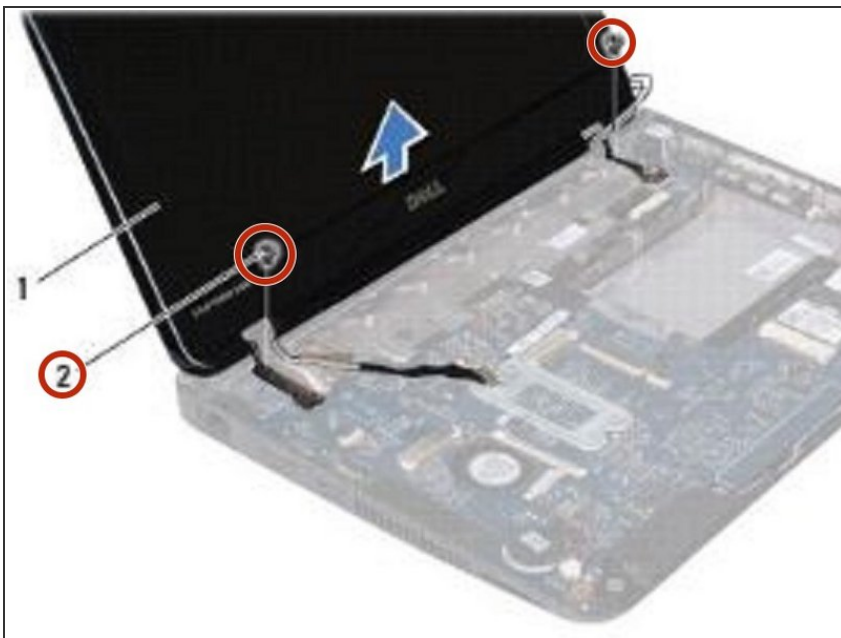
Step 1 — Disconnecting the Antenna Cables



⚠ WARNING: Before working inside your computer, read the safety information that shipped with your computer. Follow the instructions in [Before You Begin](#).

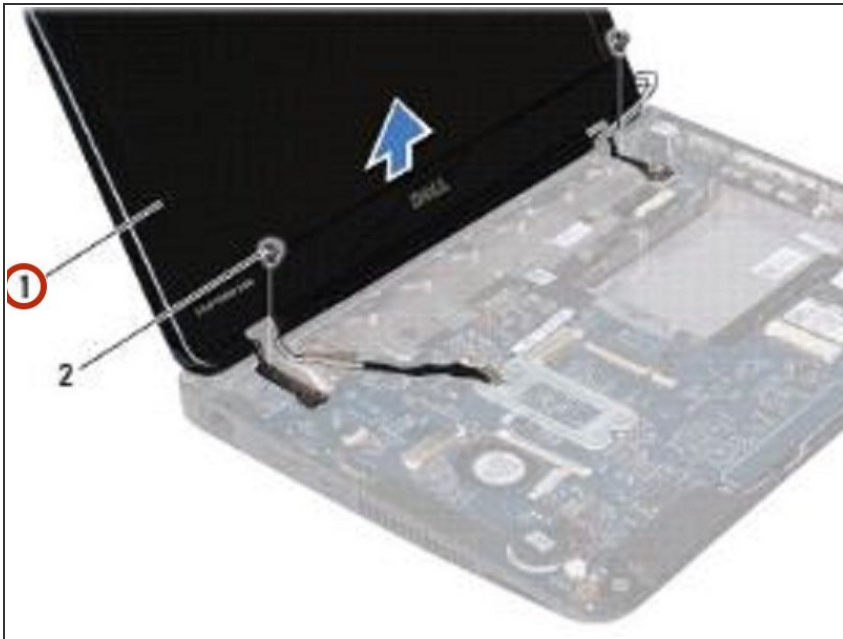
- Disconnect the Mini-Card antenna cables from the Mini-Card(s).

Step 2 — Remove the Screws



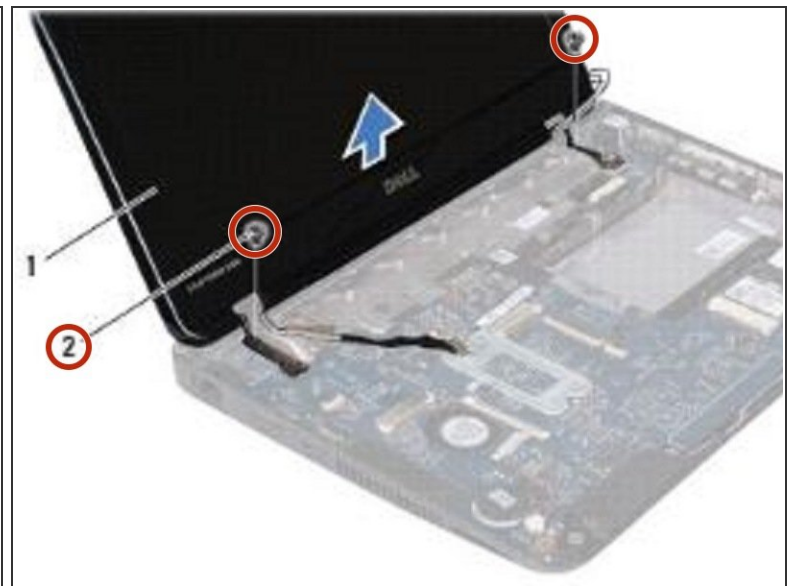
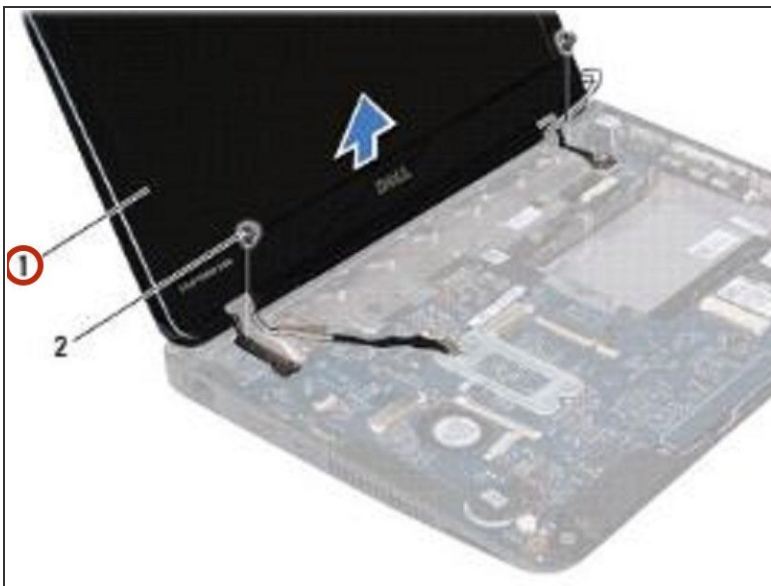
- Remove the two screws (one on each side) that secure the display assembly to the computer base.

Step 3 — Lifting the Display Assembly



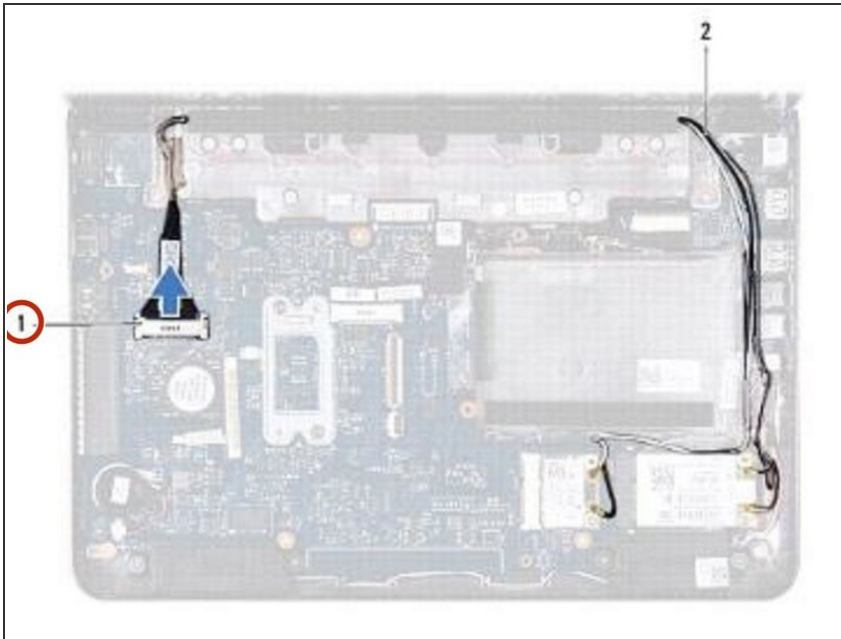
- Lift and remove the display assembly off the computer base.

Step 4 — Place the Display Assembly



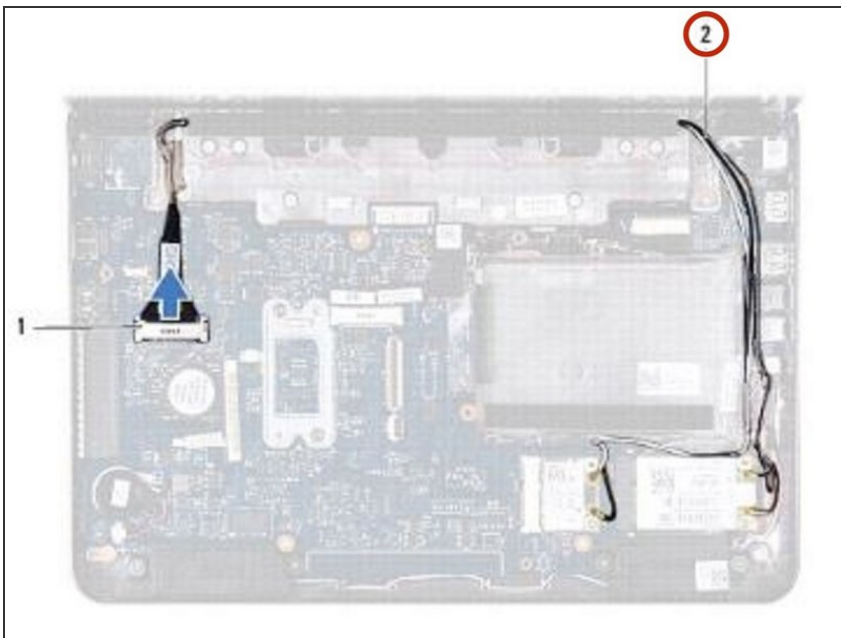
- Place the **NEW** display assembly in position and replace the two screws (one on each side) that secure the display assembly to the computer base.

Step 5 — Connect the Display Cable



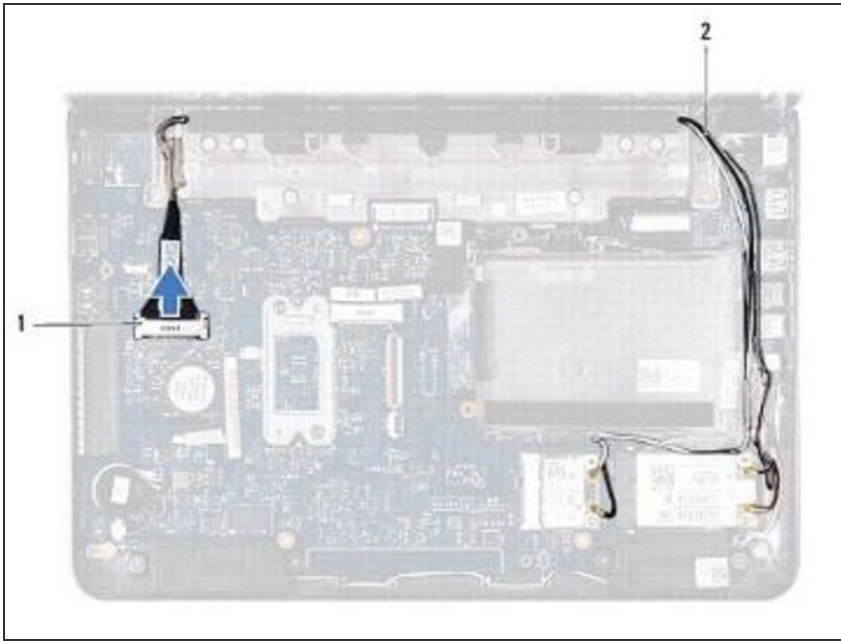
- Connect the display cable to the system board connector.

Step 6 — Routing the Antenna Cables



- Route the Mini-Card antenna cables through the routing guides on the computer base.

Step 7 — Connecting the Mini-Card Cables



- Connect the Mini-Card antenna cables to the Mini-Card(s).

To reassemble your device, follow these instructions in reverse order.

This document was last generated on 2019-05-23 08:16:51 PM.