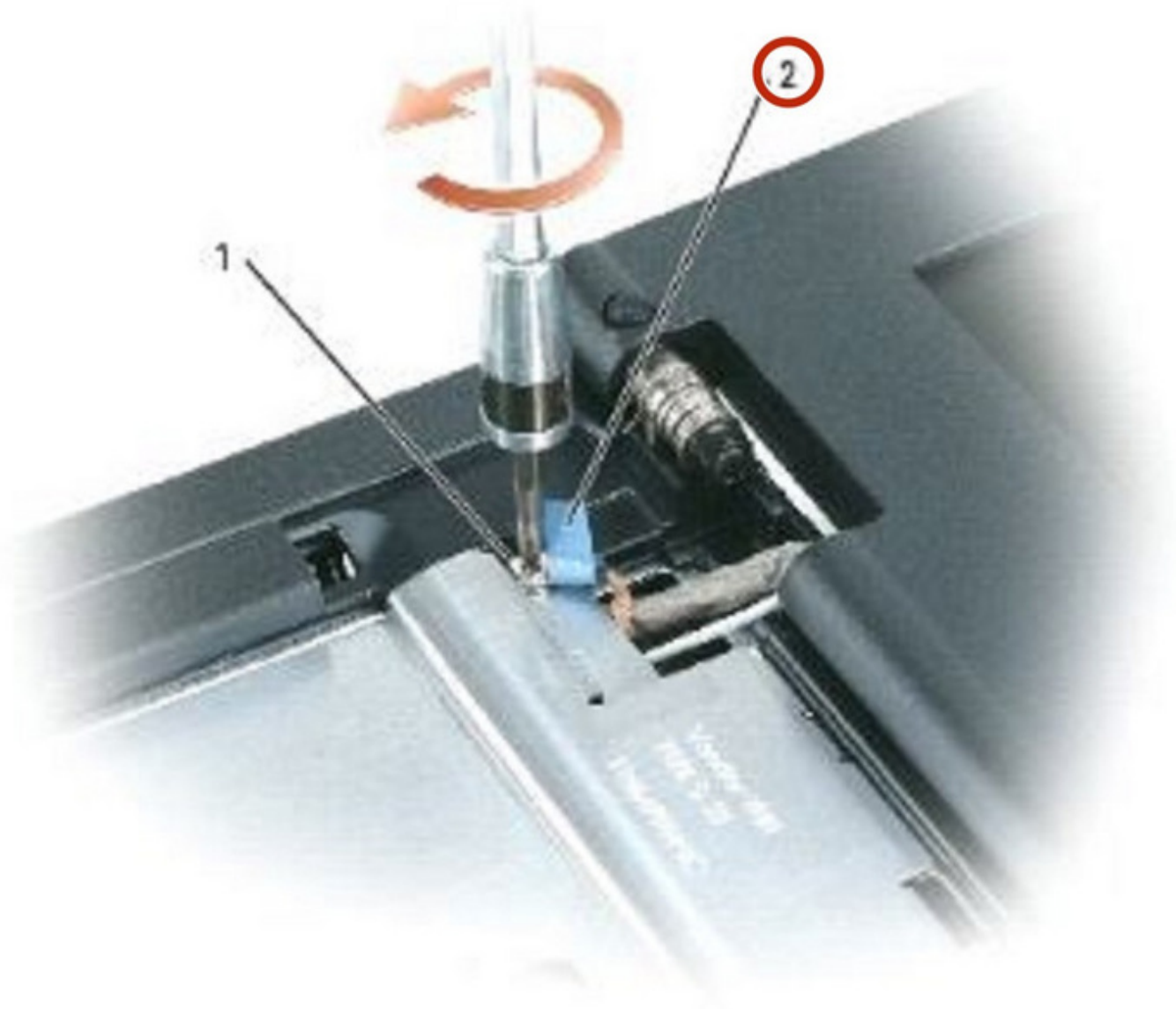




# Dell Inspiron 1200 Display Assembly Replacement

Written By: Teren Wallace



## INTRODUCTION

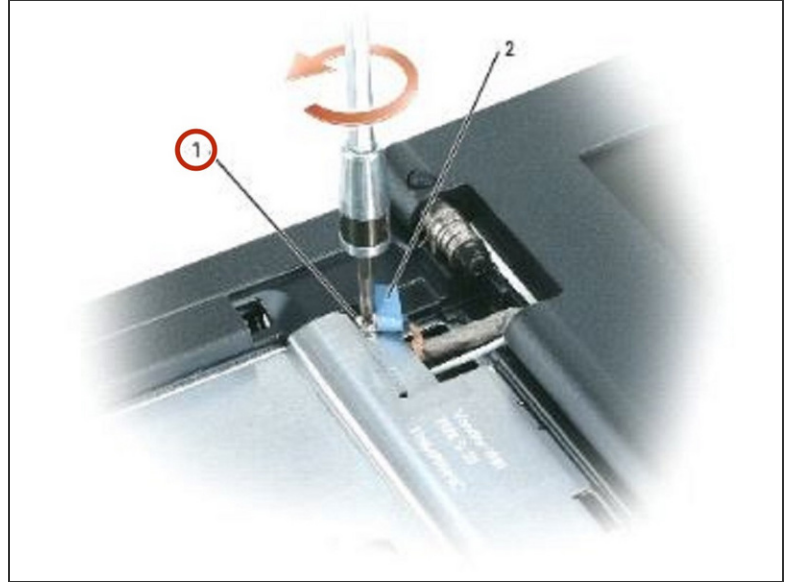
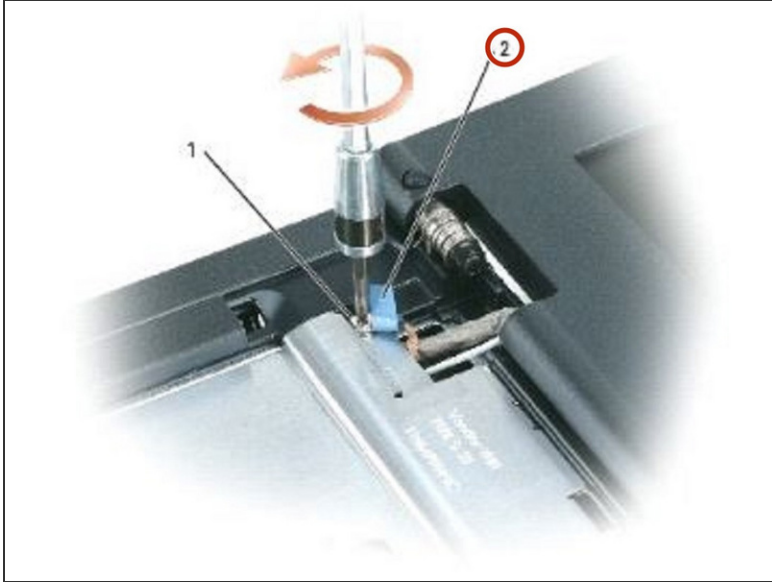
In this guide, we will show you how to remove the Display Assembly.

---

### TOOLS:

- [Phillips #0 Screwdriver](#) (1)
-

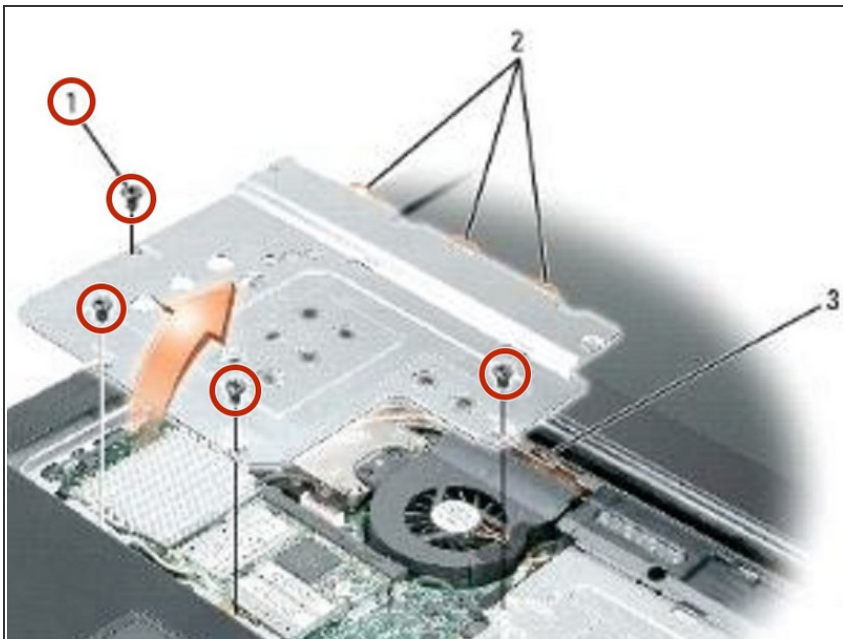
## Step 1 — Disconnecting the Ground Wire



 Follow the instructions in ["Before Working Inside Your Computer."](#)

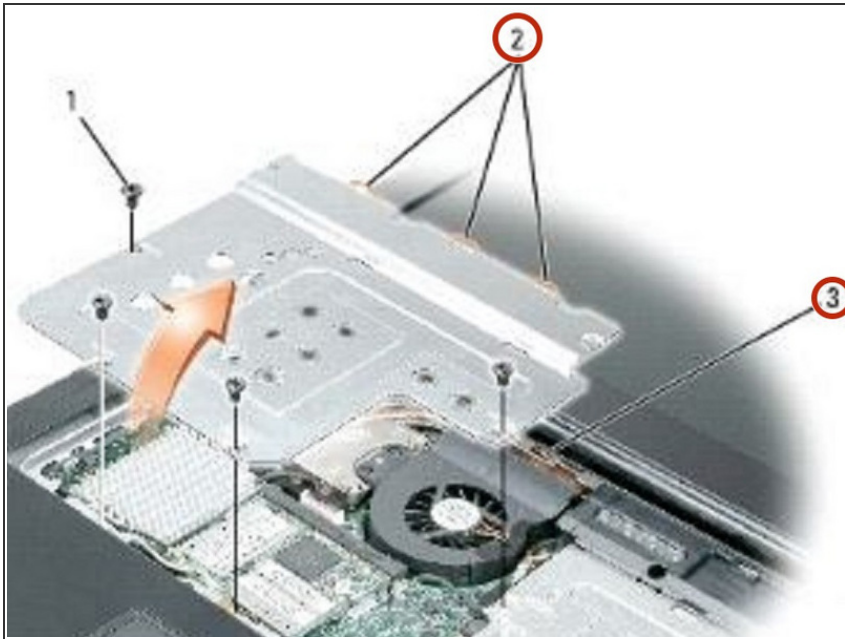
- Disconnect the display ground wire from the EMI shield by unscrewing the captive screw.

## Step 2 — Remove the Screws



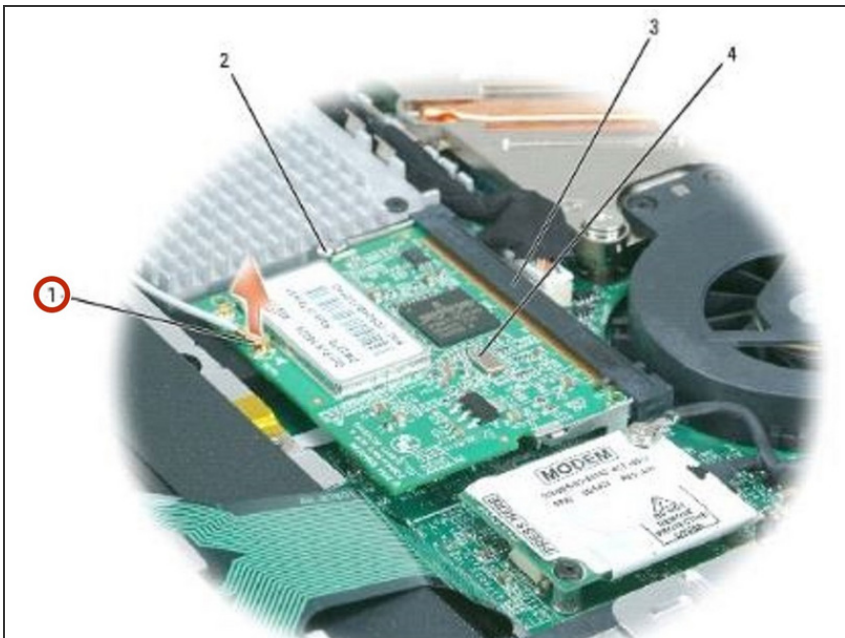
- Remove the four M2.5 x 5-mm screws (labeled "M2.5x5") that secure the EMI shield to the system board.

### Step 3 — Releasing the Retention Tabs



- Pull the EMI shield out of the computer base by rotating the front upwards then lifting to release the retention tabs from the retention-tab slots.

### Step 4 — Disconnecting the Antenna Cable



- Disconnect the attached antenna cable from the Mini PCI card.

## Step 5 — Remove the Screws



- Close the display.
- From the bottom of the computer, remove the two M2.5 x 5-mm screws labeled "D."

## Step 6 — Remove the Screws



- From the back of the computer, remove the two M2.5 x 8-mm screws labeled "D."

## Step 7 — Pull the Pull-Tab



- Pull straight up on the pull-tab that is attached to the display-feed flex cable to disconnect the cable from the system board.

## Step 8 — Removing the Cables



- Carefully remove the Mini PCI card antenna cable and the display cables from their routing guides.

## Step 9 — Lifting the Display Assembly



- Lift the display assembly out of the computer base.

To reassemble your device, follow these instructions in reverse order.

This document was last generated on 2018-06-23 03:33:11 AM.