



Health o Meter HDR743 Power Supply Replacement

This will explain how to check if they power supply is broken and how to fix it.

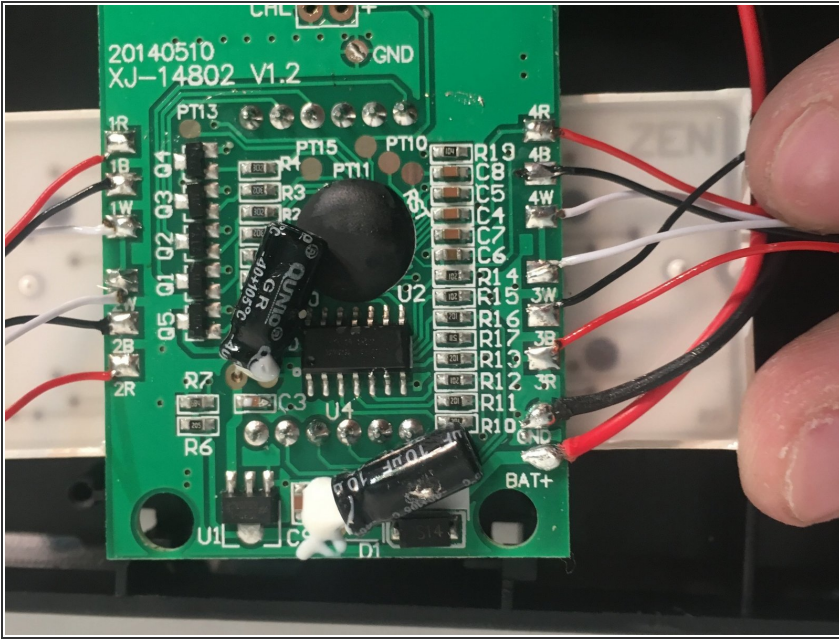
Written By: Dennis White Jr



 **TOOLS:**

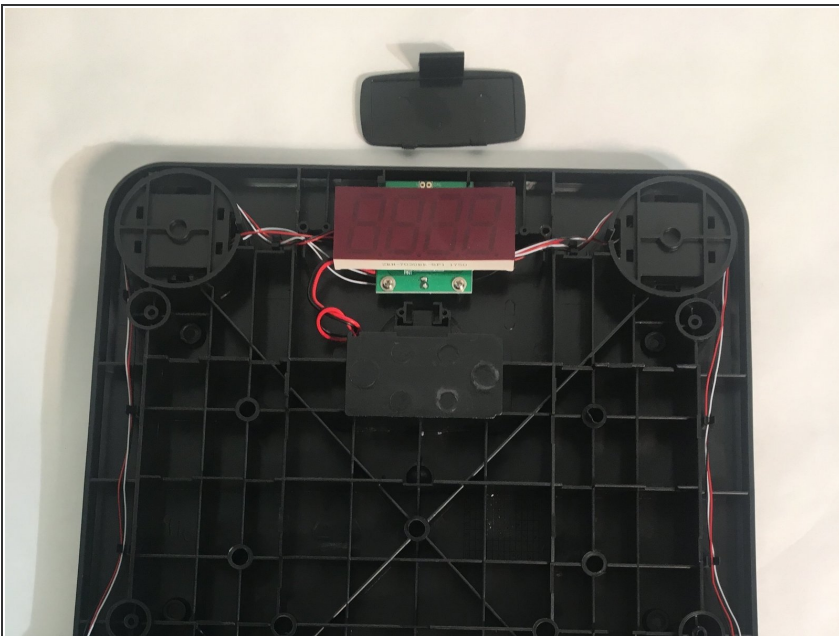
- [Multimeter](#) (1)
 - [Wire stripper/crimping tool](#) (1)
-

Step 1 — Power Supply



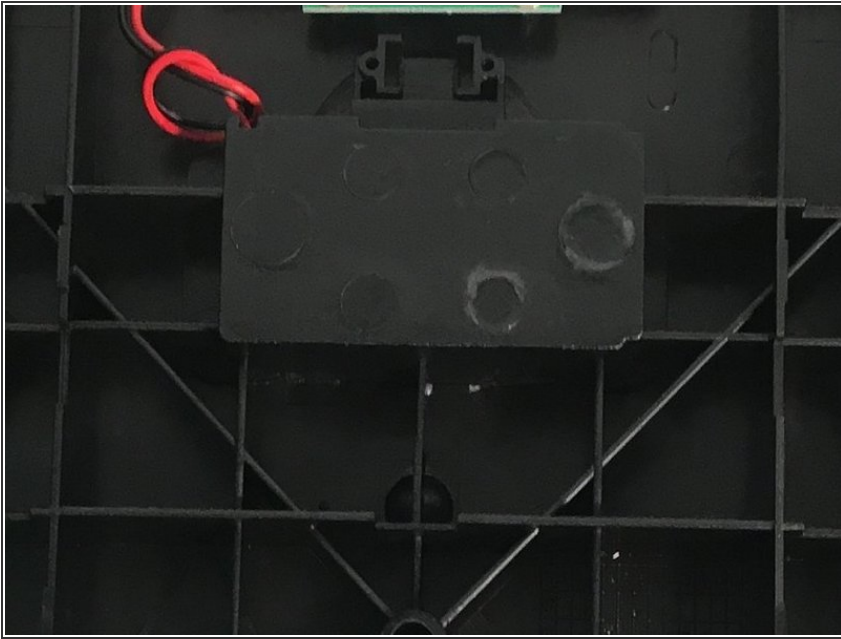
- Connect a voltmeter at the power supply's connection to the circuit board and the power supply.
- If the the voltage at the power supply is incorrect, the power supply should be replaced.

Step 2



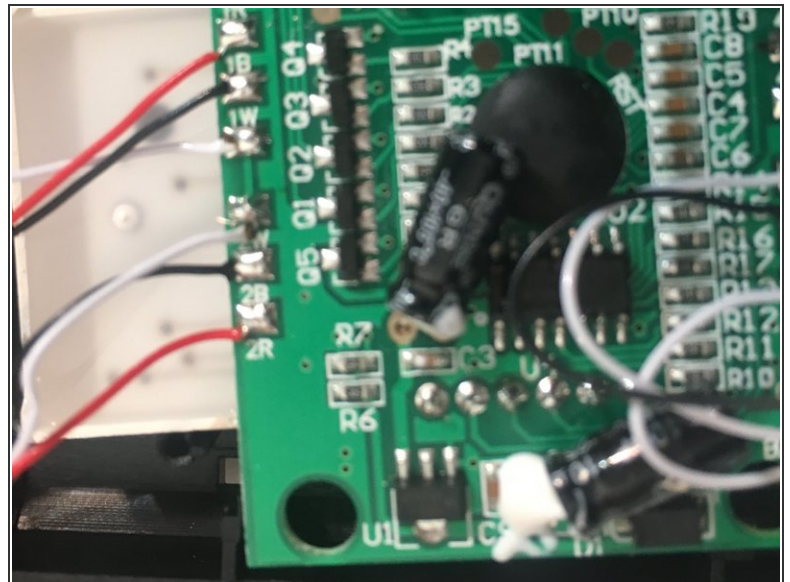
- Use wire strippers to cut the wired connection to the power supply.
- If the wires need replacing, you will need to use a soldering iron and remove the connections at the board.

Step 3



- Use the wire strippers to cut off the rubber ends of the power supply wires.
- Use a soldering iron and solder to fuse the connections between the two wires.

Step 4



- Test the power supply once the wires have been reconnected.
- If the Health o Meter still has power issues, check the connections between the new power supply and the board.
- If no issues are found, the circuit board may need to be replaced.

To reassemble your device, follow these instructions in reverse order.