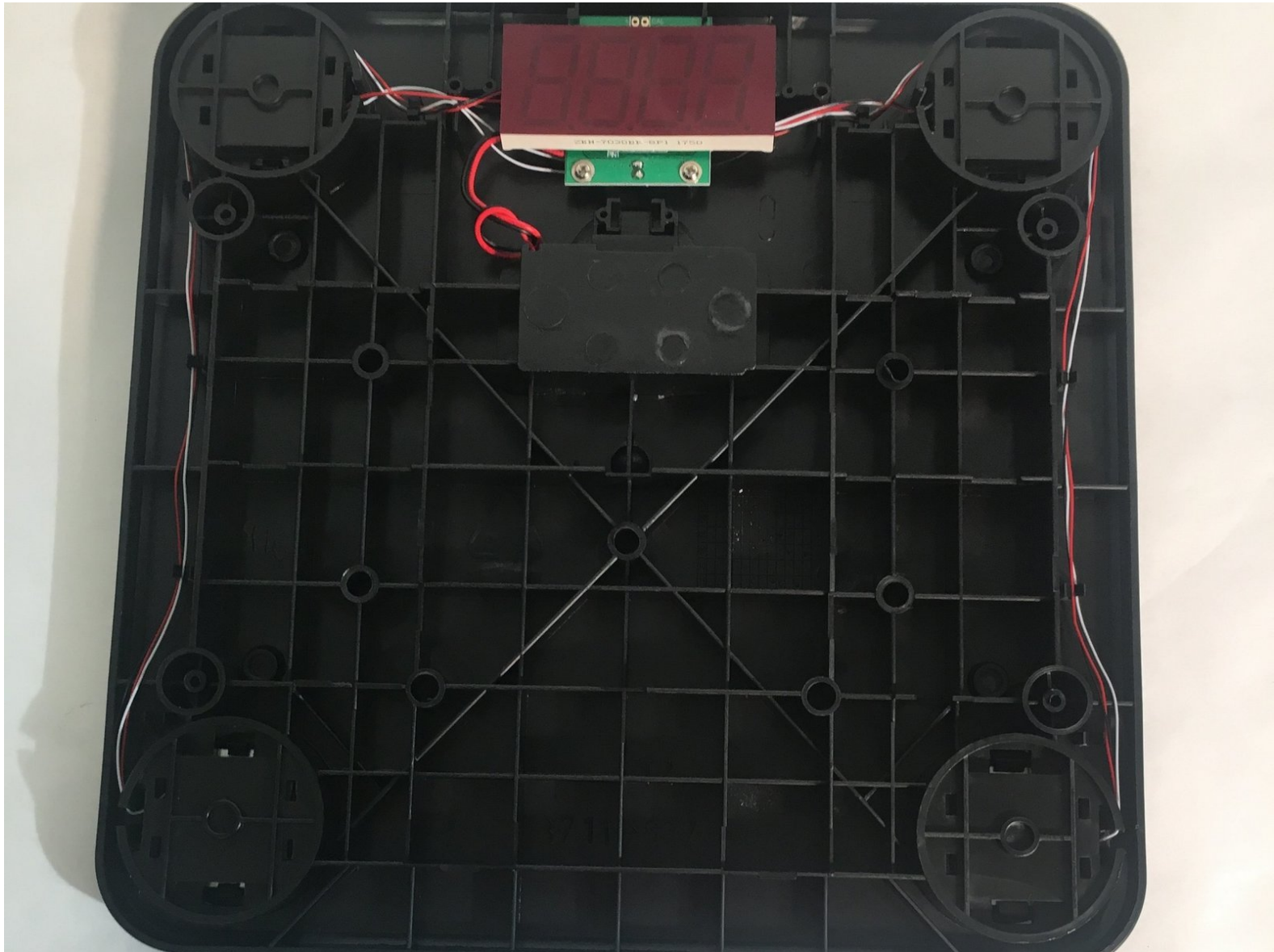




Health o Meter HDR743 Wire Connection Replacement

This will explain how to check wire connections are bad and how to repair or replace them.

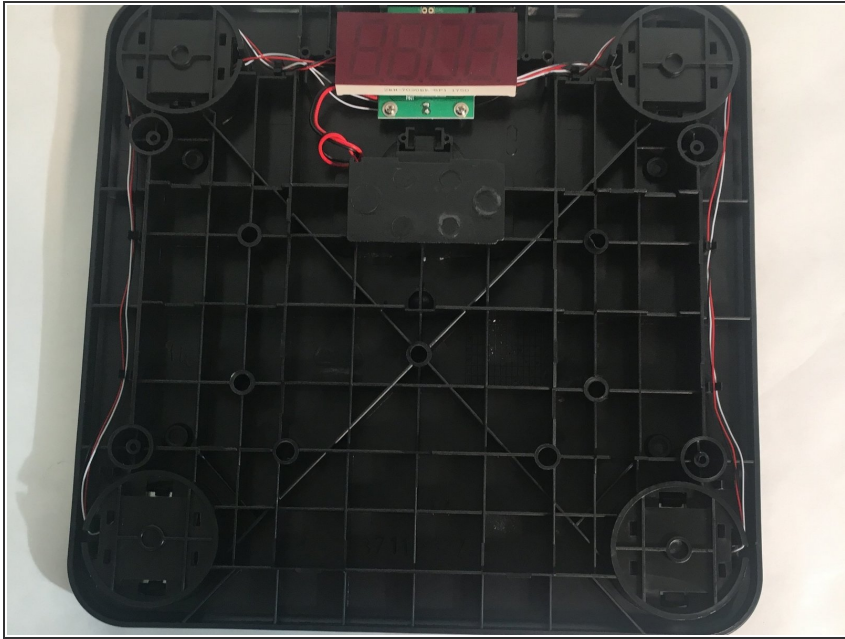
Written By: Dennis White Jr



 **TOOLS:**

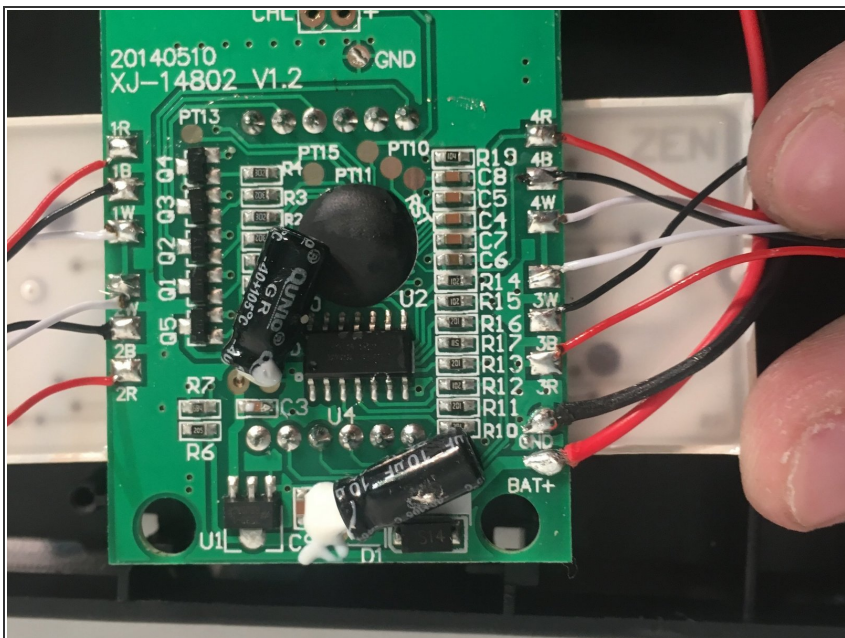
- [Multimeter](#) (1)
 - [Soldering Iron](#) (1)
-

Step 1 — Wire Connection



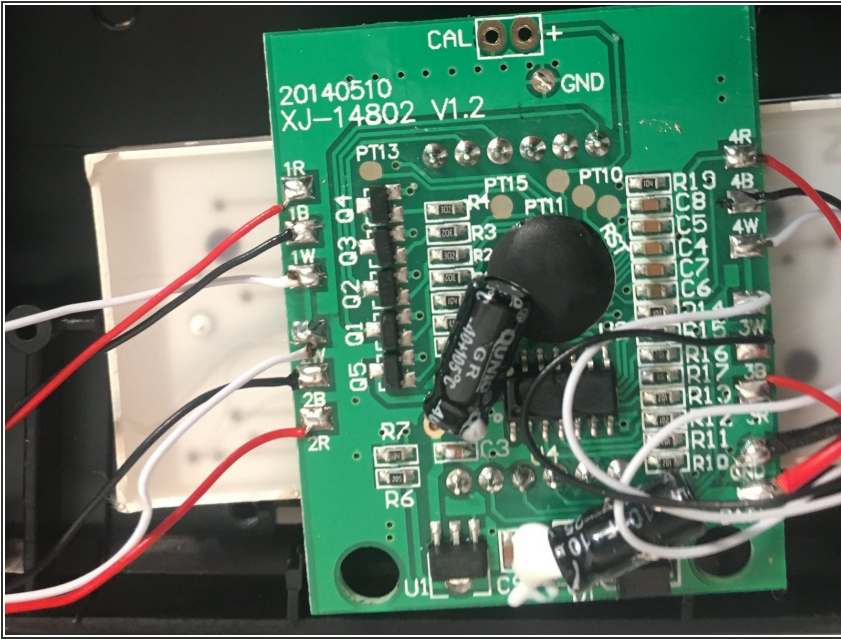
- Use a voltmeter to check for power in the wires.
- If the power is on, the voltmeter will give a reading. Verify if the red indicator light is visible.

Step 2



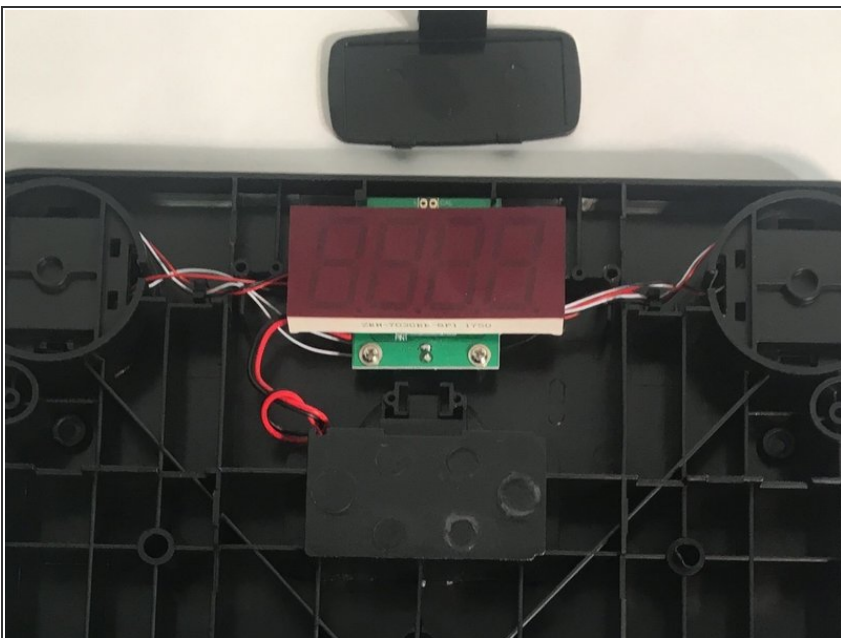
- Identify where the issue in the wire begins.
- If the problem isn't near a connection, use wire strippers to cut away the troubled area, and splice a new wire in-between.
- If the troubled area cannot be found, the entire wire will need to be replaced.
- Use a soldering iron to remove the wire from its connection to the circuit board.
- Use wire strippers to remove the wires from the other components.

Step 3



- Use a soldering iron to solder and splice a new wire to the component.
- The other end of the wire should be spliced or soldered directly to the circuit board.

Step 4



- Test the new connection with the voltmeter.
- If the issue persists, the repair has failed, or a different component is faulty.

To reassemble your device, follow these instructions in reverse order.