



Logitech m100 Mouse Teardown

Teardown of a Logitech Mouse Model M100

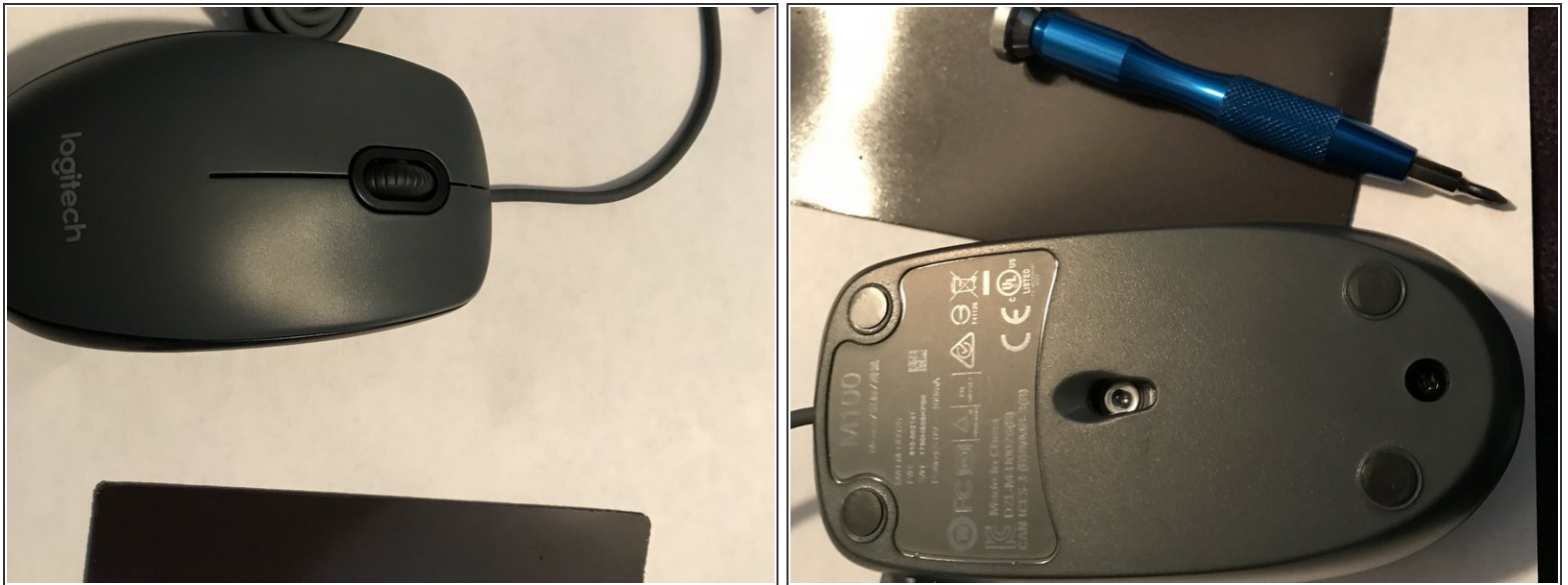
Written By: Ashley



TOOLS:

- [Phillips #0 Screwdriver \(1\)](#)
-

Step 1 — Starting off



- First flip the mouse over and unscrew the single screw at the bottom.
- I will not be showing how to remove the light because I do not have the correct tool to do so.
- A mouse works by having the red light reflect back and then it detects how much light was shown or blocked off to figure out which way the mouse has moved.
- A mouse will sometimes use potentiometers, or rotary encoders to then convert the motion of the wheel spinning, to digital codes. That info will then transfer up through the mouse, through the USB cable, then into the computer. The USB cable also provides the power for the mouse by transferring energy from the computer.

Step 2 — Open it up



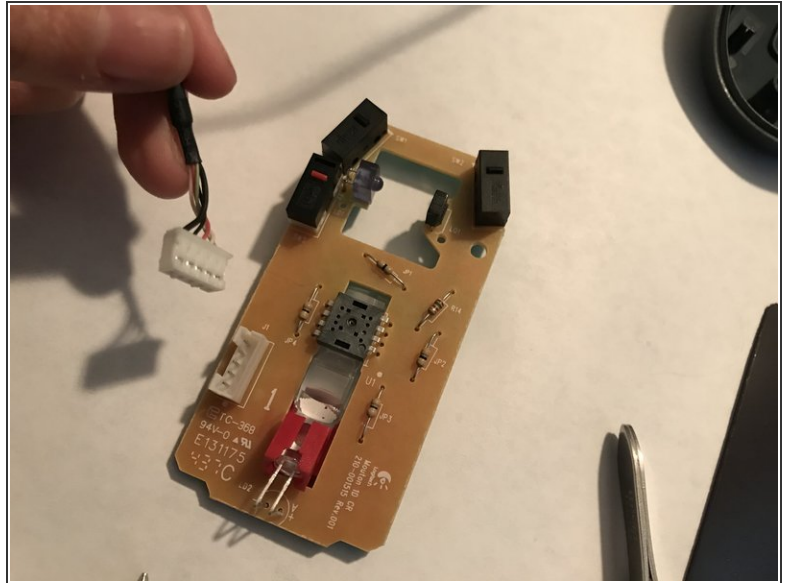
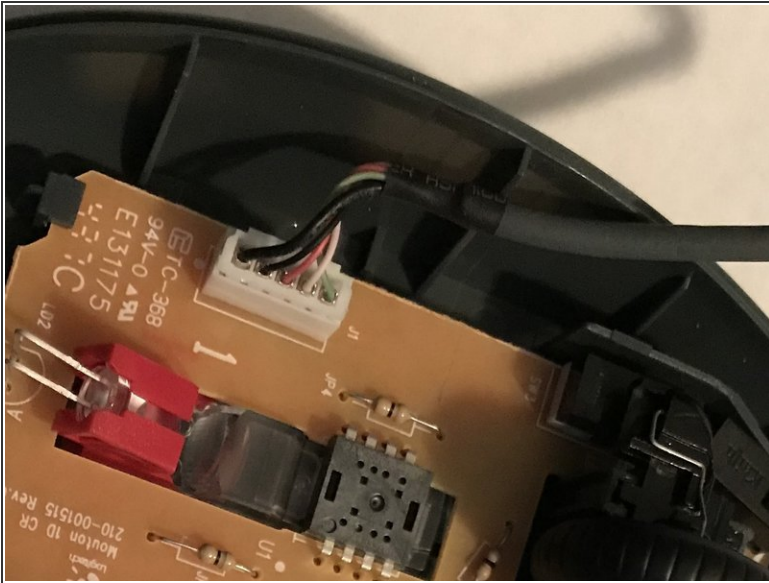
- Now open apart the two pieces carefully so you don't end up having everything on the inside explode all over you once it's opened.

Step 3 — The small pieces



- Remove the centerpiece with the wheel and tilt it to the right so the spring can slip off.
- Then remove the left wire by pulling it out of the socket it's put in.
- *The spring here is what let's you press down on the wheel without letting it get stuck there. It basically bounces it back up. And the wire on the left helps hit the small red button on the mouse which would send signals through the usb cable saying that you pressed down on the wheel. (Same thing happens when you click regularly.)*

Step 4 — The USB cable



- This part is a tiny bit difficult. To remove the USB cable you have to use your fingers to pull up on the tab. It takes awhile because you have to be careful to not accidentally bend the plastic casing it's in. Luckily once it's out it's extremely easy to put in.