



# Gateway P-6831FX Hard Drive Replacement

The hard drive is a component that will act as storage for your device. This guide will go over how to remove and replace the hard drive for the P-6831FX.

Written By: Chandler Jardin



---

## INTRODUCTION

The hard drive is a component that will act as storage for your device. This guide will go over how to remove and replace the hard drive for the P-6831FX.

---

### TOOLS:

- [Phillips #0 Screwdriver](#) (1)
-

## Step 1 — Hard Drive



- Turn your laptop upside down and remove the four Philips #0 (5mm) screws for the cover of the hard drive.
- ⚠ Make sure to unplug your laptop charger, as removing the hard drive while the device is charging may damage the hard drive and or the charger.

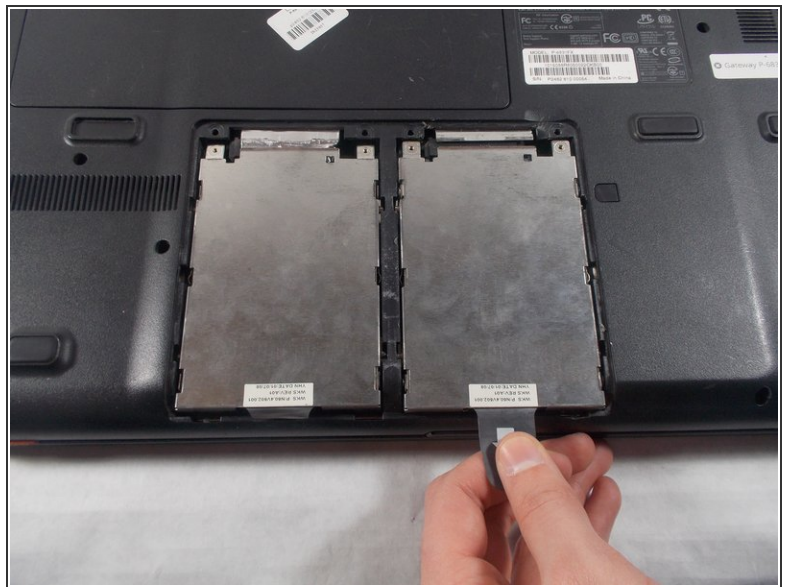
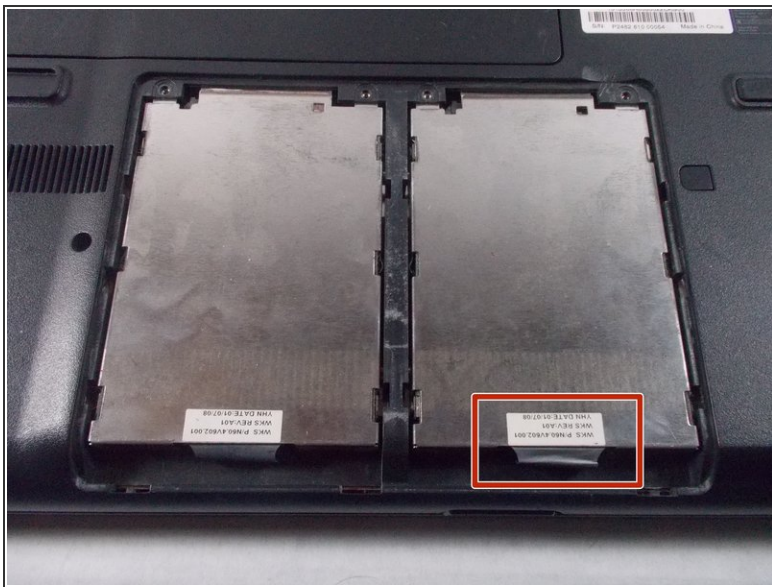


## Step 2



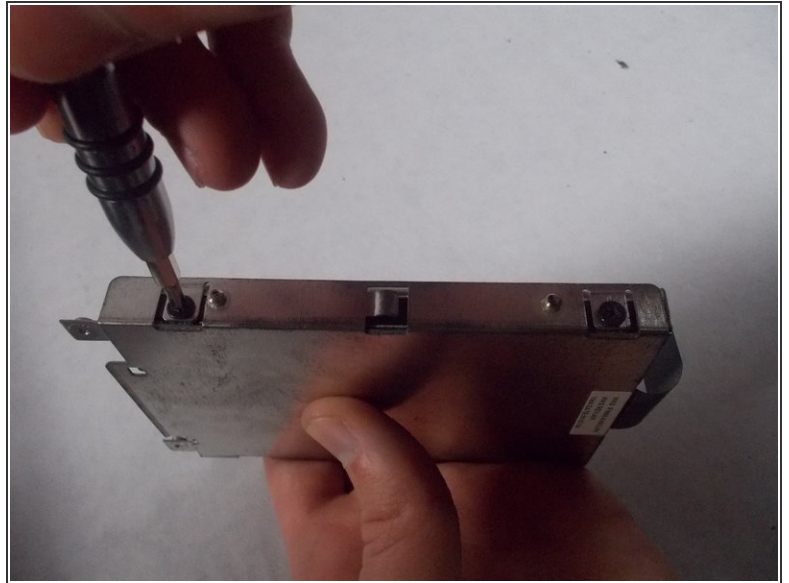
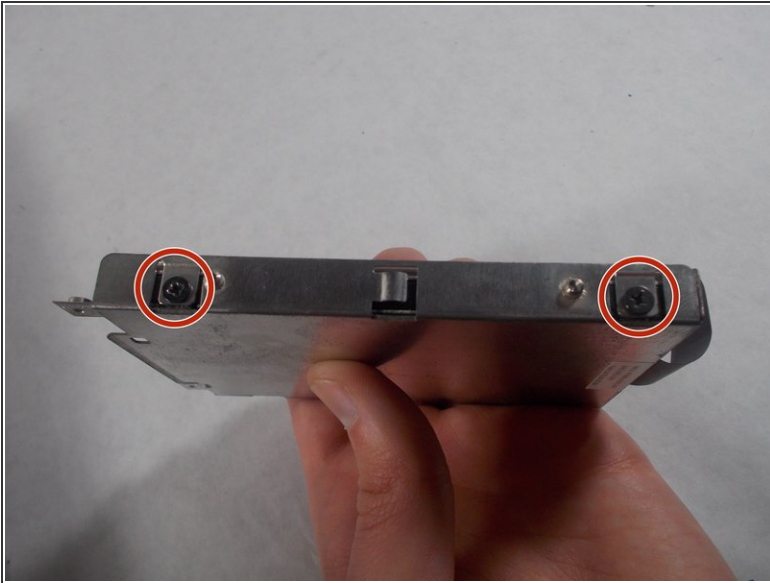
- Gently pull the cover away from the device.
- Set the cover aside for now, until reassembly.

## Step 3



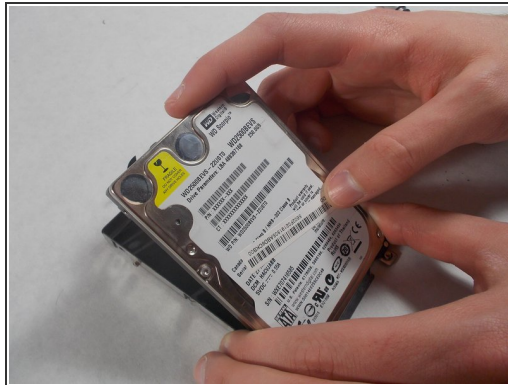
- Pull the plastic tab as shown to remove the hard drive from the device.

## Step 4



- Remove the four Philips #0 (3mm) screws around the case for the hard drive. There will be two screws and the left and right side.

## Step 5



- Remove the hard drive from the case.

To reassemble your device, follow these instructions in reverse order.

This document was last generated on 2019-07-16 01:42:17 AM.