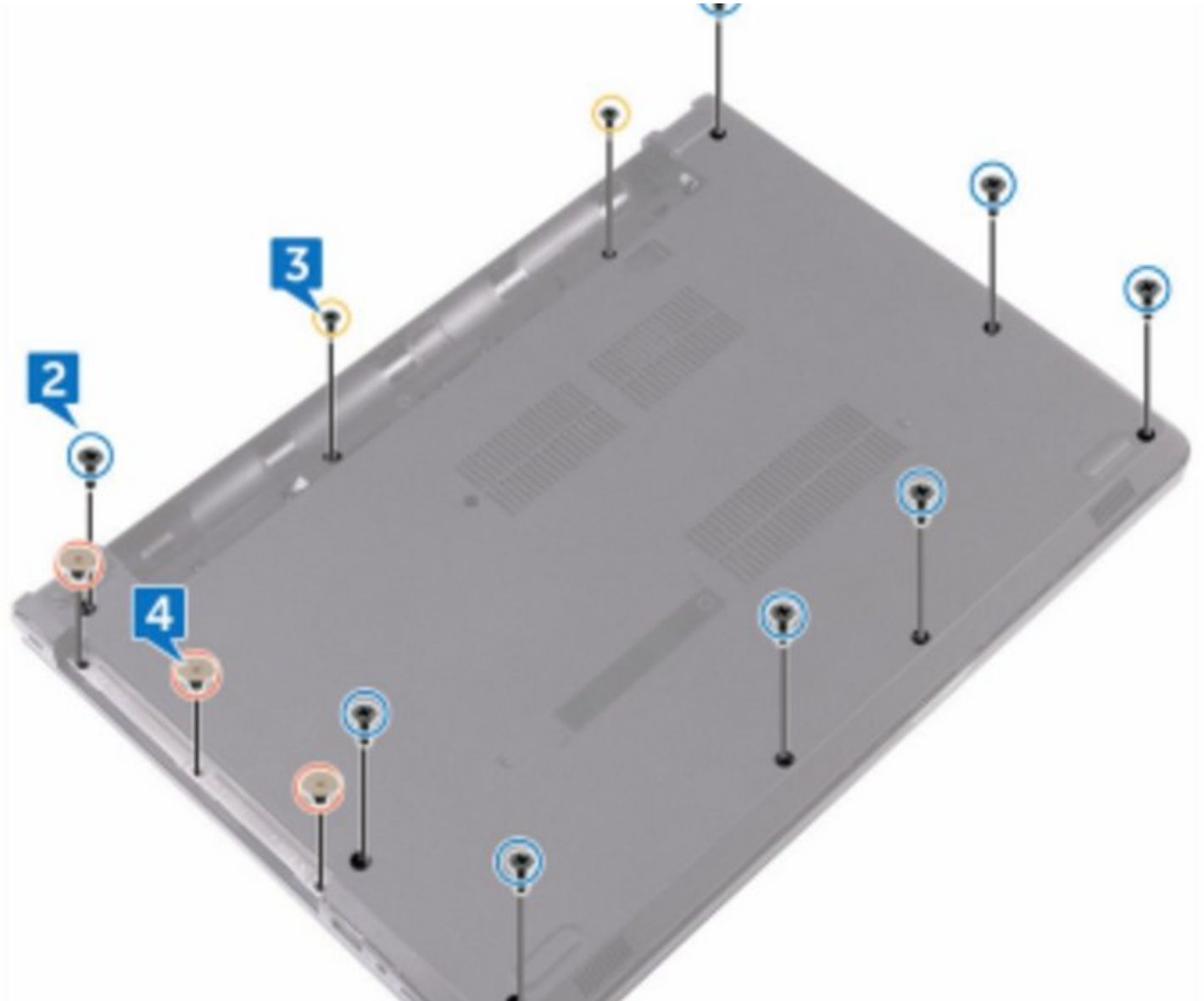




Dell Inspiron 14 3467 Base Cover Replacement

Written By: darrius



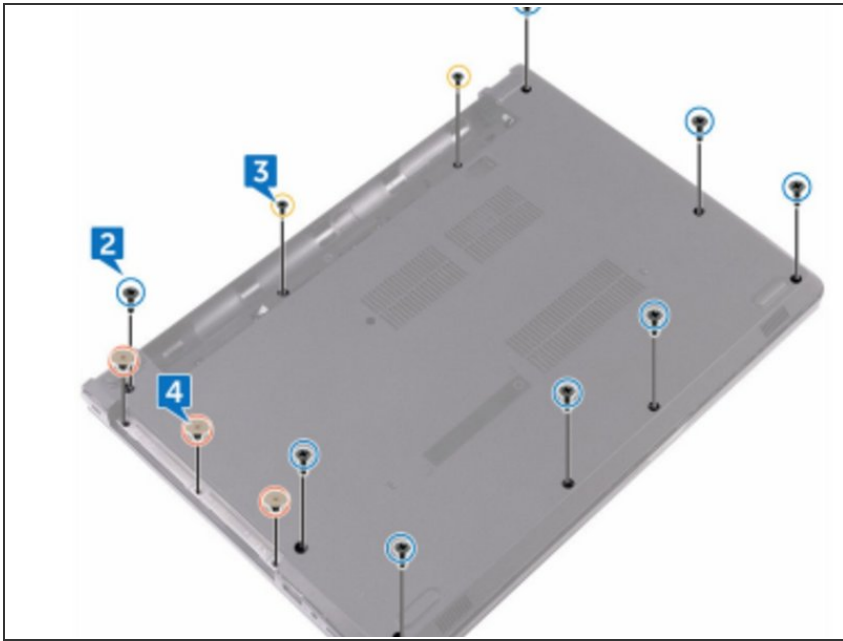
INTRODUCTION

How to remove and replace the Base Cover.

TOOLS:

- [Phillips #0 Screwdriver](#) (1)
-

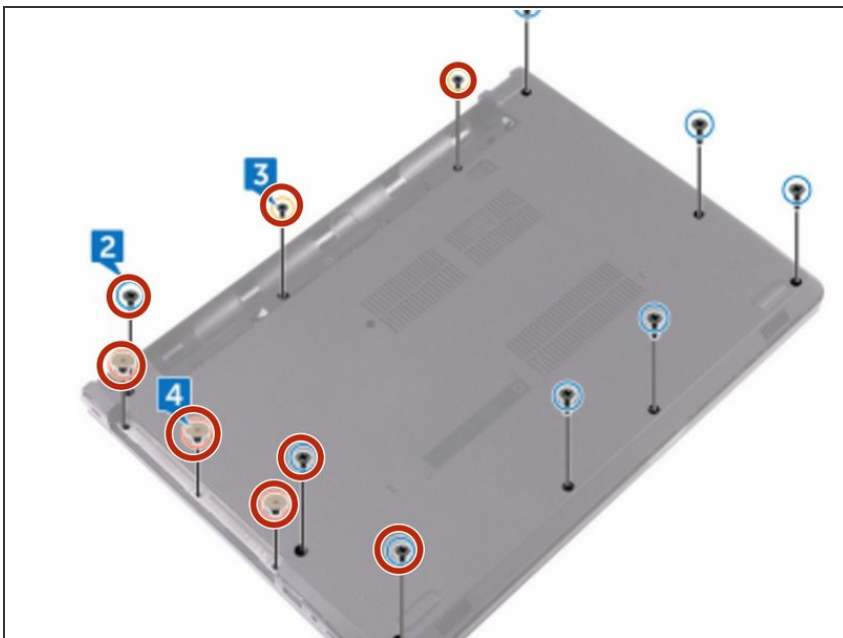
Step 1 — Turning over the Computer



⚠ WARNING: Before working inside your computer, read the safety information that shipped with your computer and follow the steps in [Before Working Inside Your Computer](#). After working inside your computer, follow the instructions in [After Working Inside Your Computer](#).

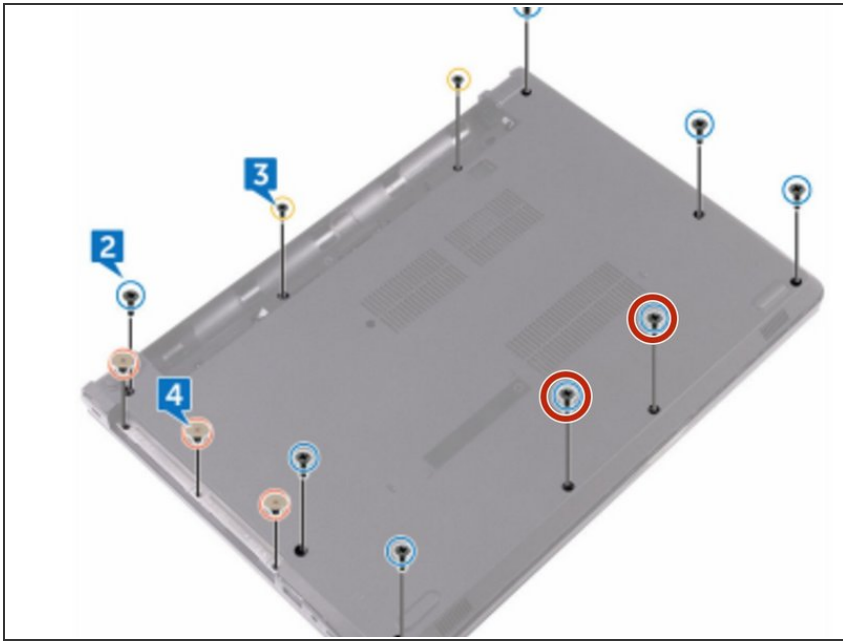
- Close the display, and turn the computer over.

Step 2 — Remove the Screws



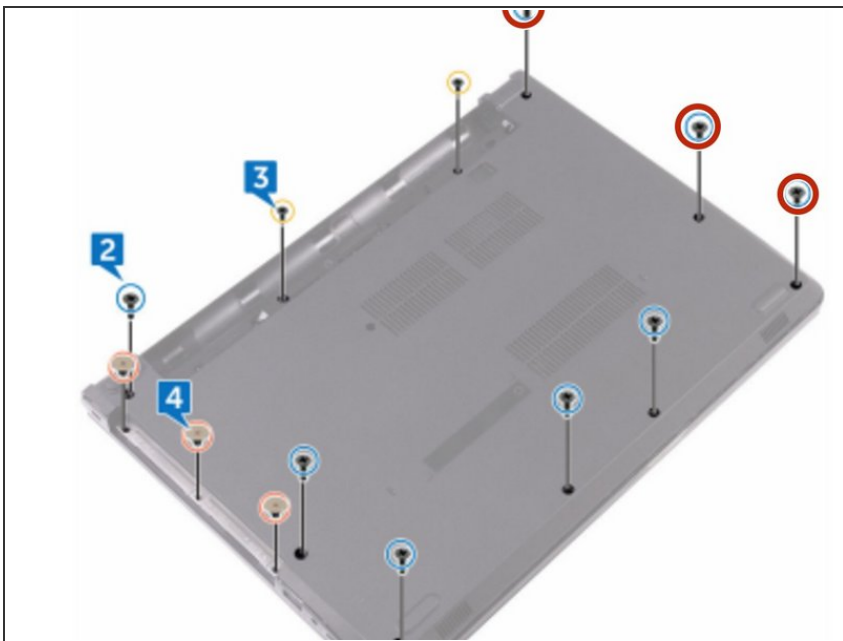
- Remove the eight screws that secure the base cover to the palm-rest assembly.

Step 3 — Removing the Screws



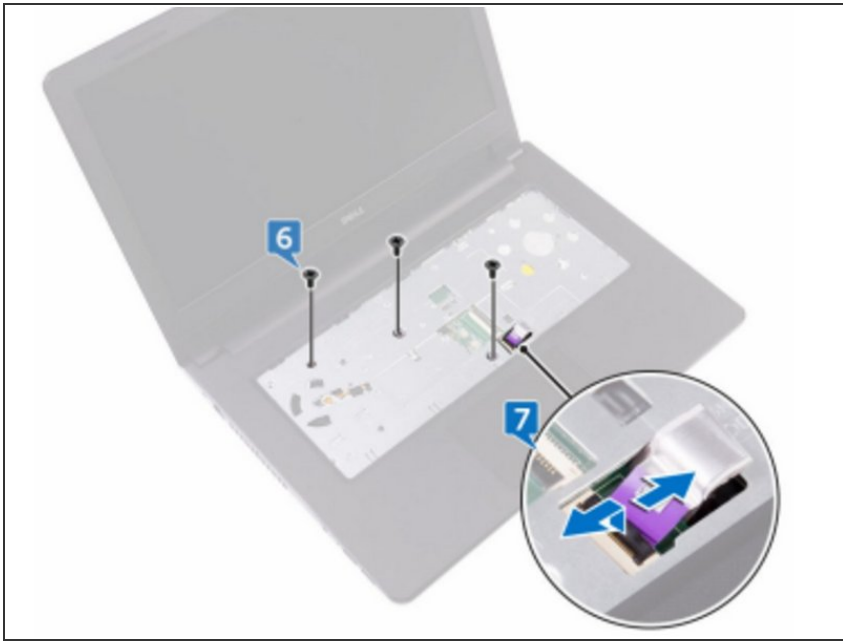
- Remove the two screws that secure the base cover to the palm-rest assembly.

Step 4 — Removing the screws



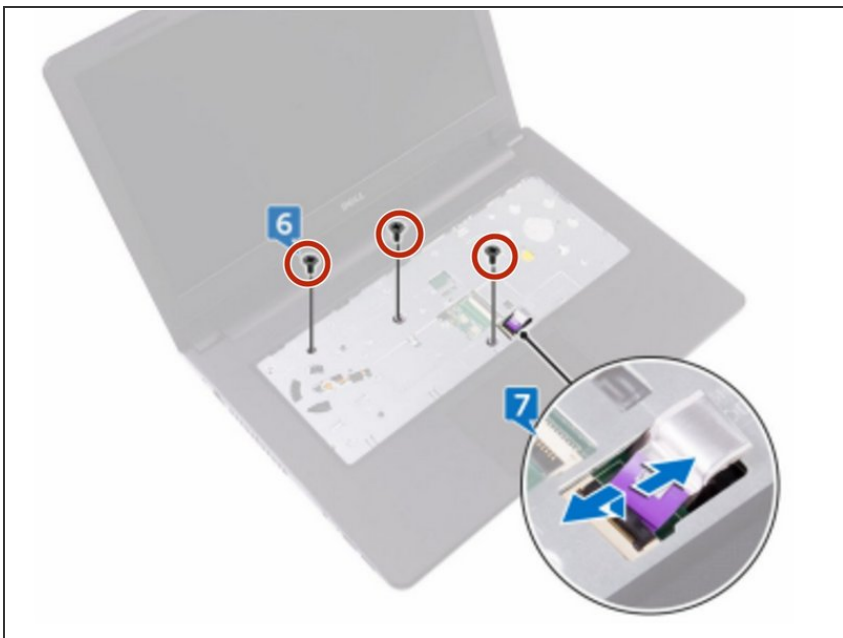
- Remove the three screws that secure the base cover to the palm-rest assembly.

Step 5 — Turning the Computer over



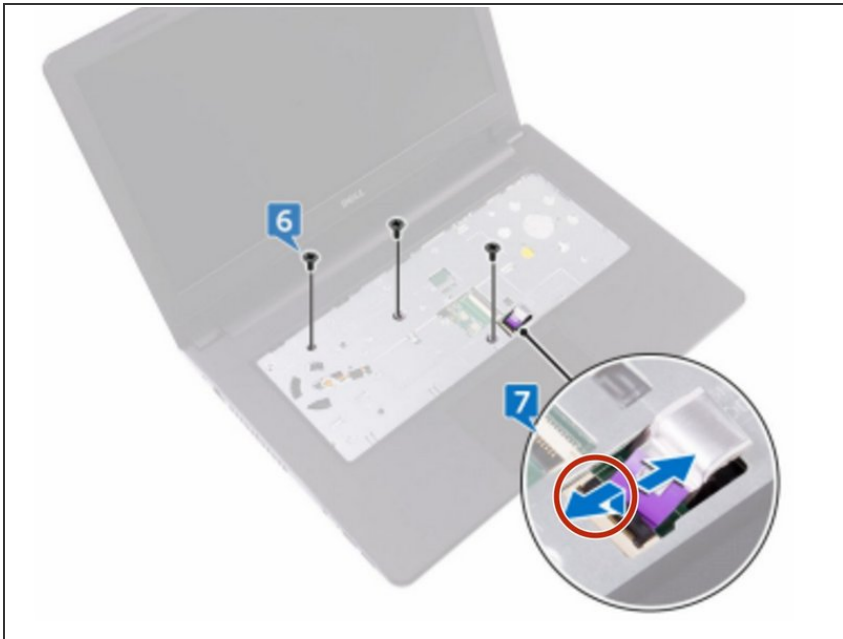
- Turn the computer over, and open the display.

Step 6 — Removing the Screws



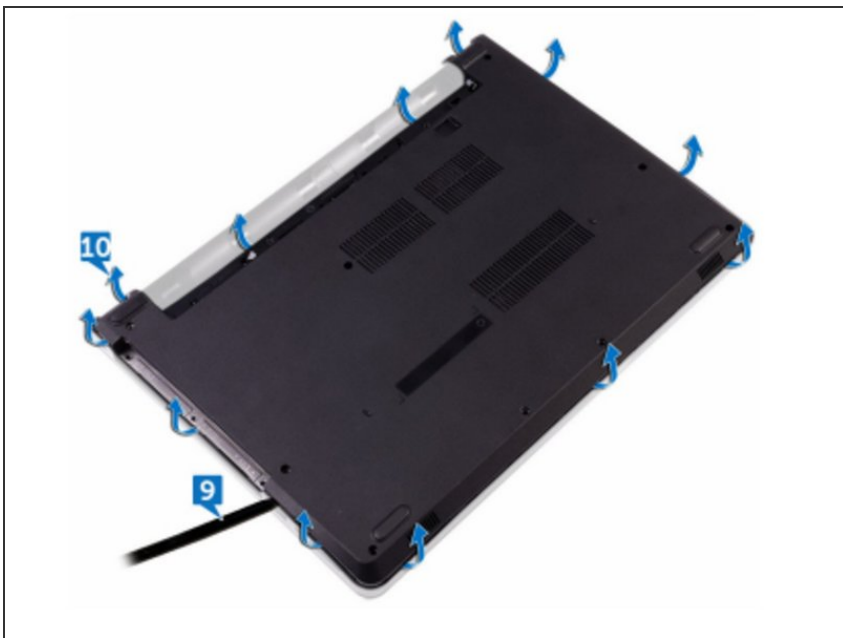
- Remove the three screws that secure the base cover to the palm-rest assembly.

Step 7 — Disconnecting the Optical-Drive Cable



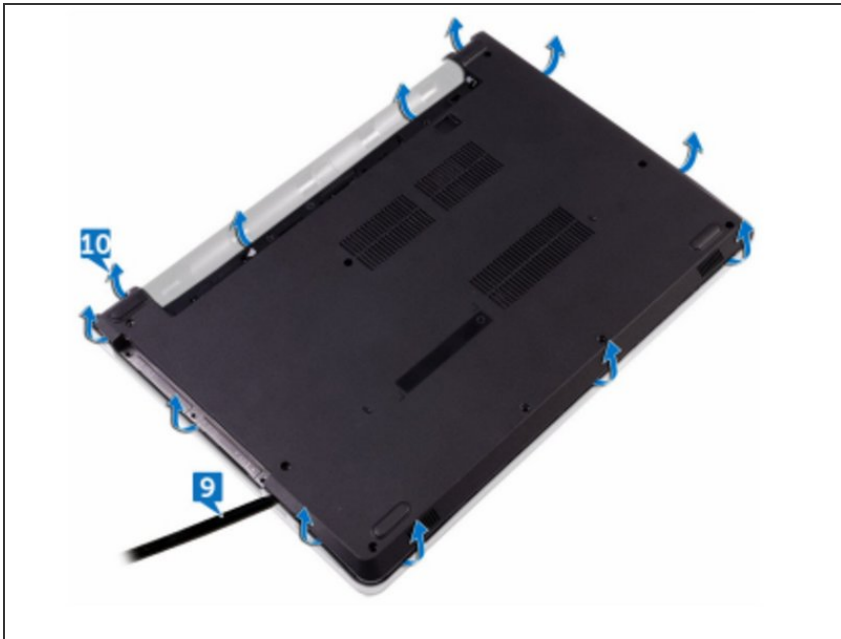
- Open the latch, and disconnect the optical-drive cable from the system board.

Step 8 — Turning the Computer Over



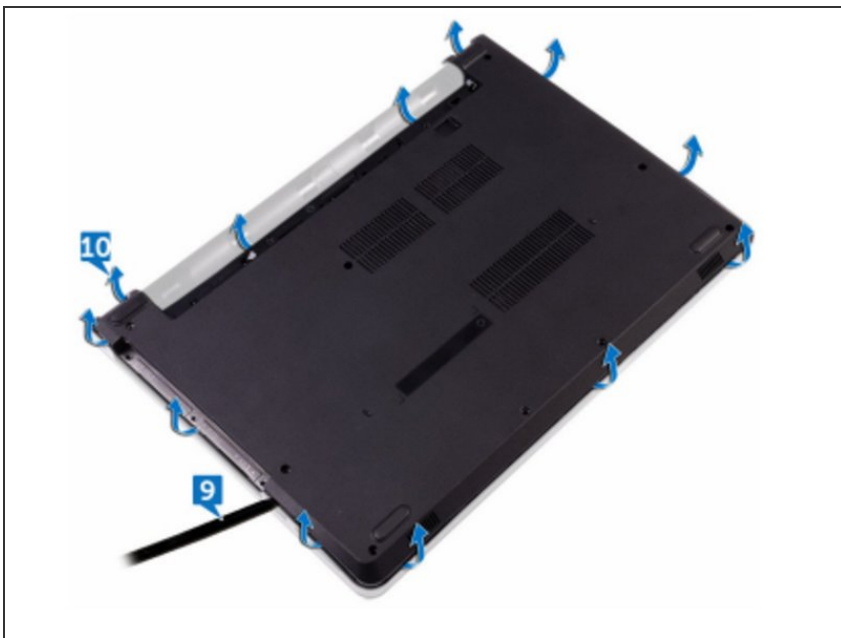
- Close the display, and turn the computer over

Step 9 — Prying the Base Cover



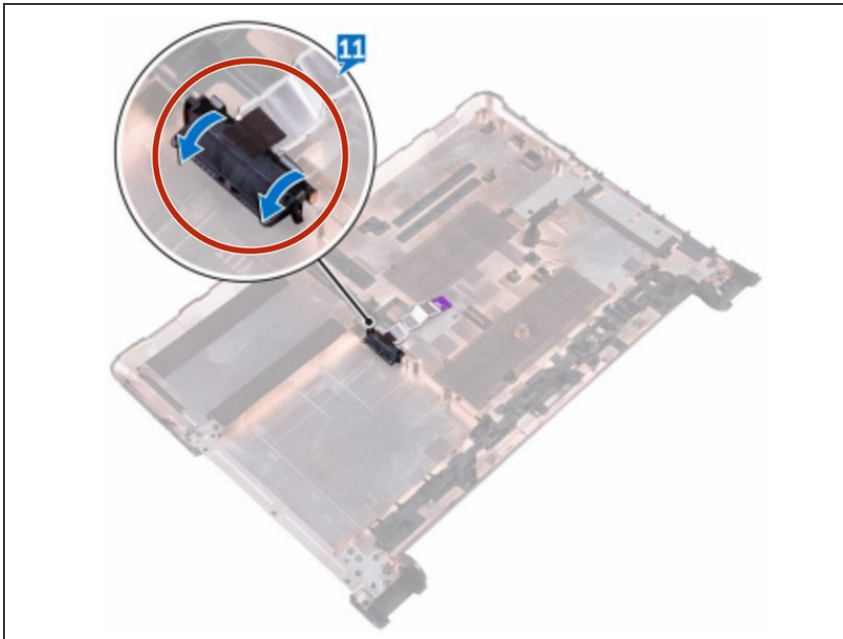
- Using a plastic scribe, pry the base cover off the palm-rest assembly.

Step 10 — Lifting the Base Cover



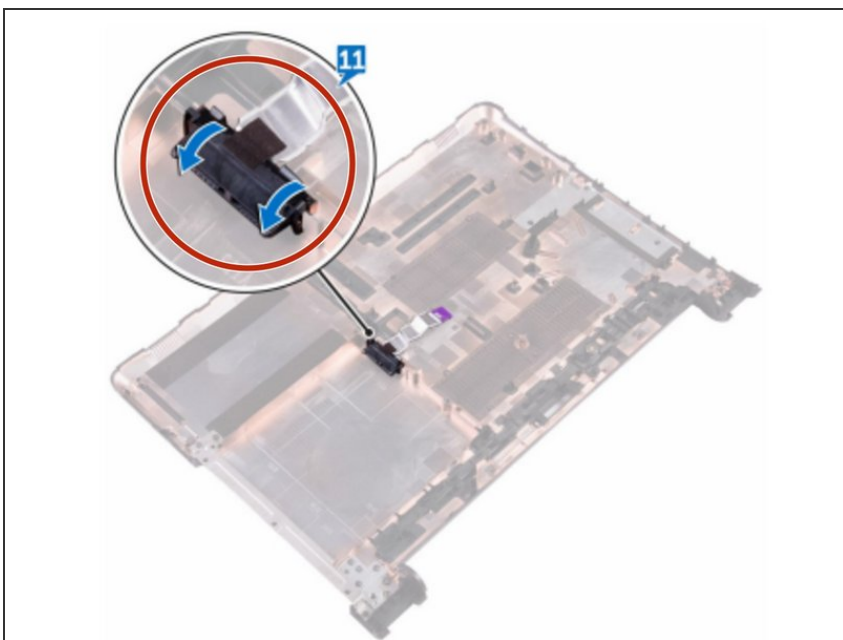
- Lift the base cover off the palm-rest assembly.

Step 11 — Release the Optical-Drive Interposer



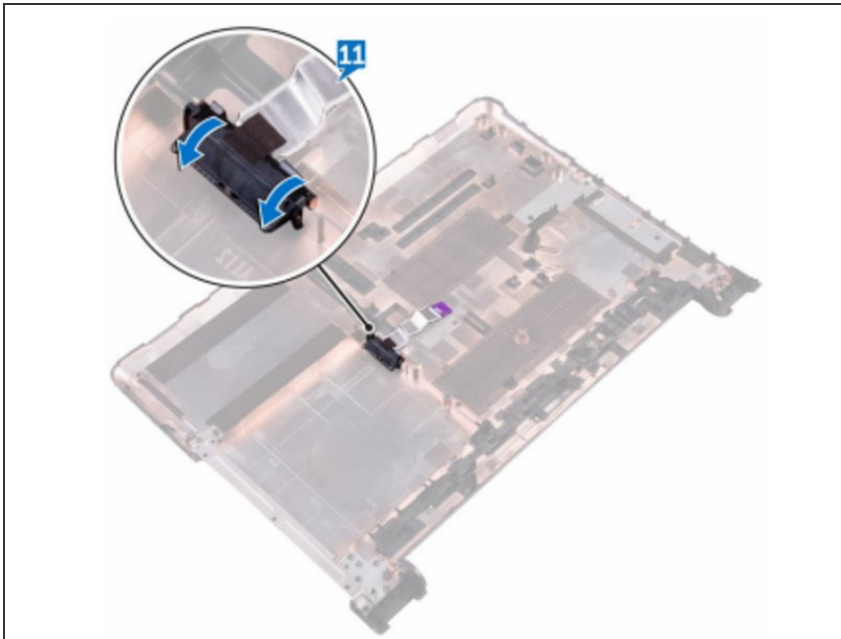
- Release the optical-drive interposer from the tabs, and remove it from the base cover.

Step 12 — Sliding the Optical-Drive



- Slide the optical-drive interposer into the tabs on the **NEW** base cover and snap it into place.

Step 13 — Placing the Base Cover



- Place the base cover on the palm-rest assembly and route the optical-drive cable through the slot on the palm-rest assembly.

Step 14 — Sliding the Tabs



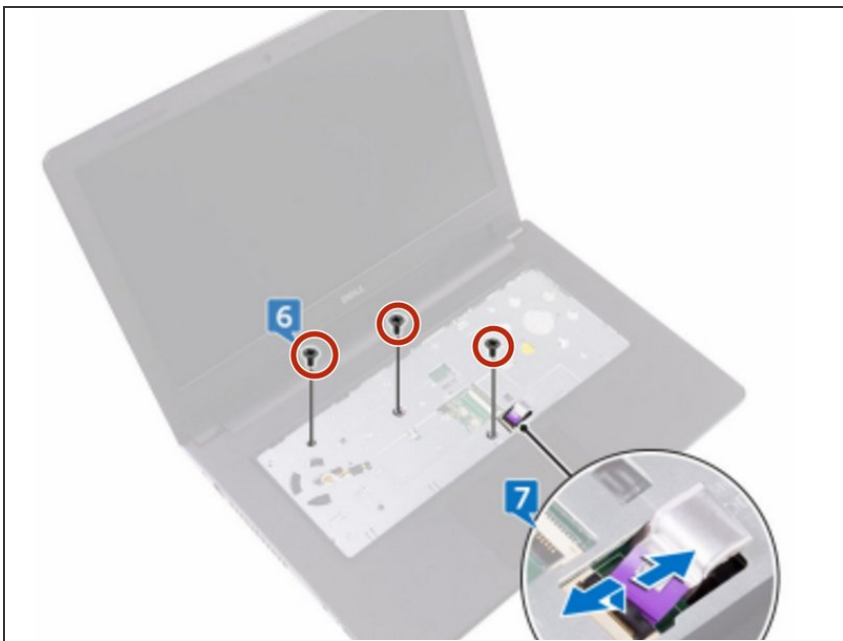
- Slide the tabs on the base cover into the slots on the palm-rest assembly, and snap the base cover into place.

Step 15 — Sliding the Optical-Drive Cable



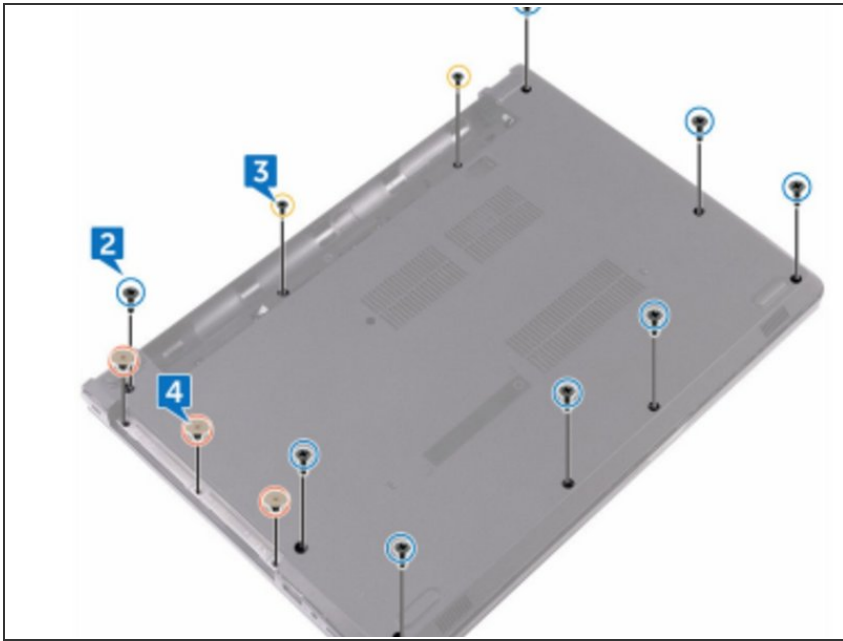
- Slide the optical-drive cable into the connector on the system board and press down the latch to secure the cable.

Step 16 — Placing the Screws



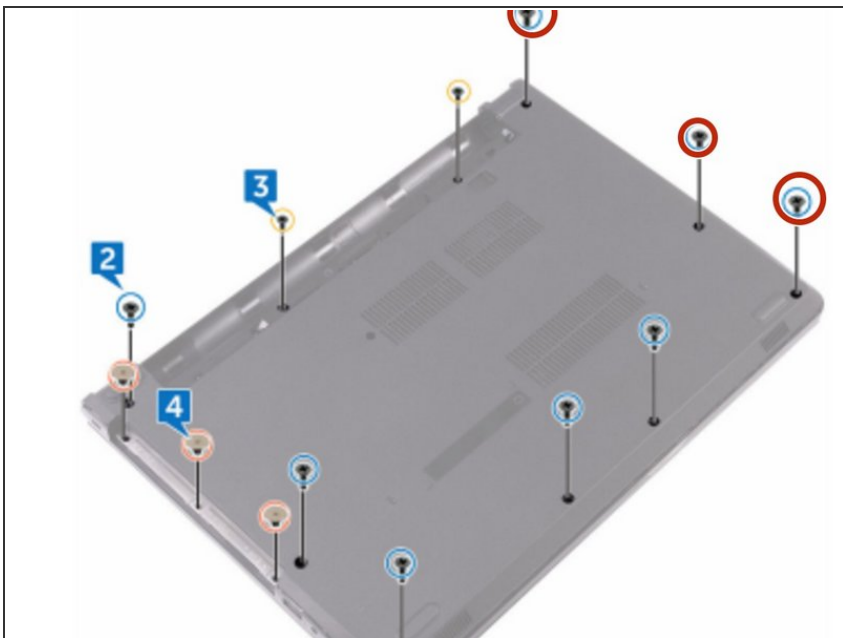
- Replace the three screws (M2x5) that secure the base cover to the palm-rest assembly.

Step 17 — Turning over the Computer



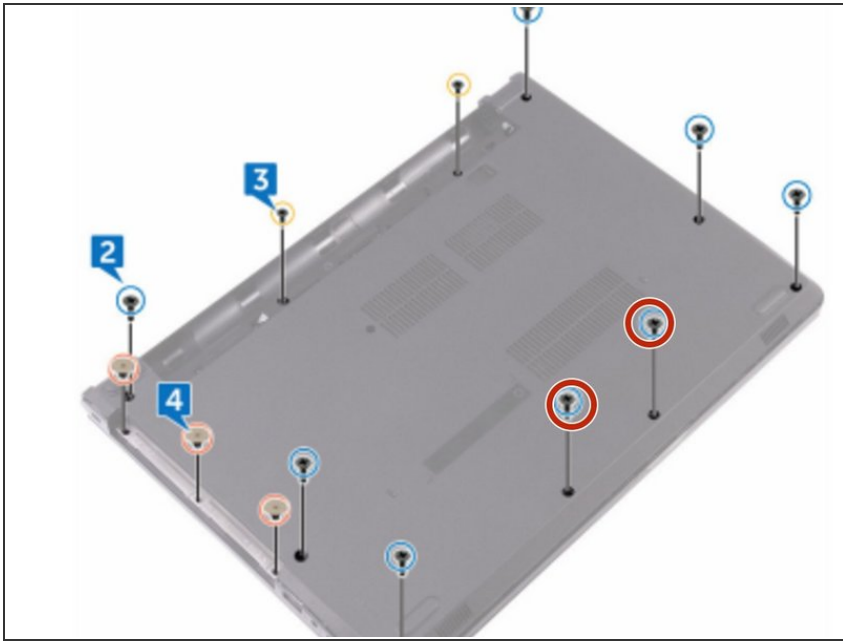
- Close the display, and turn the computer over.

Step 18 — Replacing the Screws



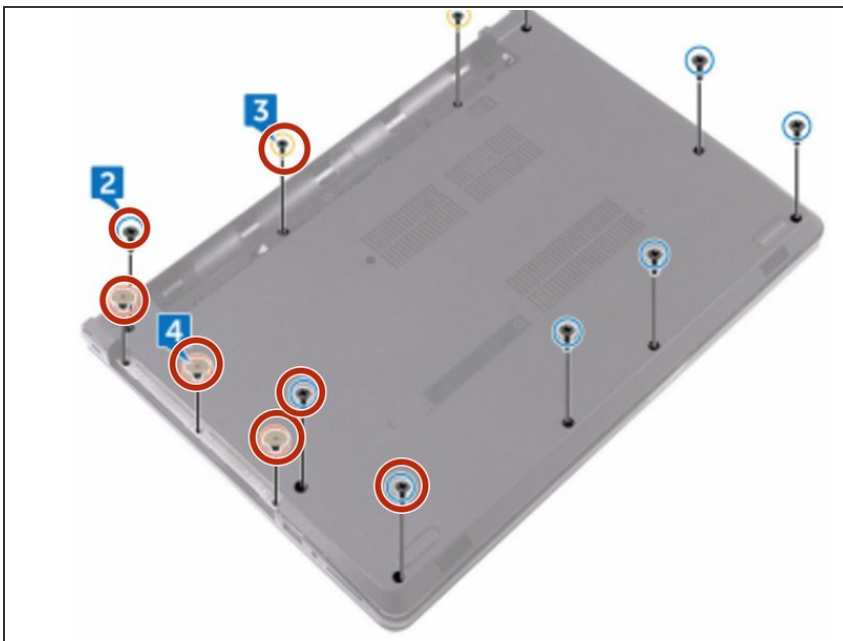
- Replace the three screws (M2x2) that secure the base cover to the palm-rest assembly.

Step 19 — Replacing the Screws



- Replace the two screws (M2x5) that secure the base cover to the palm-rest assembly.

Step 20 — Replacing the Screws



- Replace the eight screws that secure the base cover to the palm-rest assembly.