



Wireless LAN card Replacement

Replacement guide to help you replace your damaged or broken wireless LAN card.

Written By: Armani Tayeh



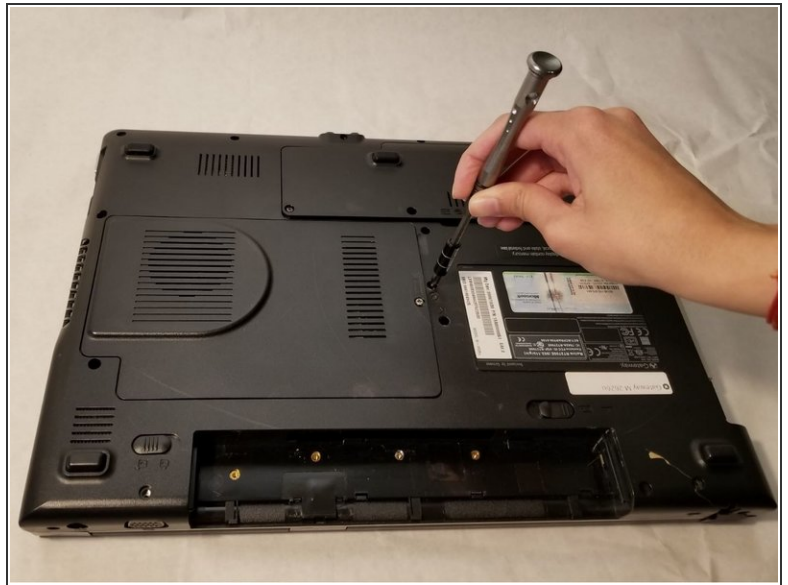
INTRODUCTION

If your wireless LAN card is damaged or broken or you're having trouble connecting to WiFi with your laptop, replace Wireless LAN card using this guide.

TOOLS:

- [Phillips #1 Screwdriver](#) (1)
 - [Tweezers](#) (1)
 - [iFixit Opening Tools](#) (1)
-

Step 1 — Back Panel



- Using the Phillips #1 screwdriver, remove the four 6mm screws on the back of the laptop.

Step 2



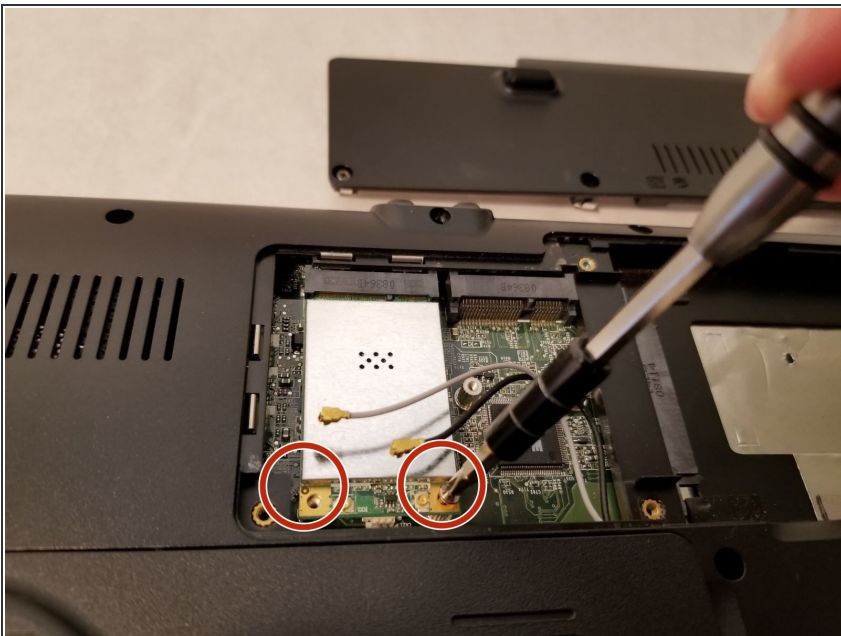
- Insert the plastic prying tool and pry the back panel off starting at an edge and moving your way around it.

Step 3 — Wireless LAN card



- Use the tweezers to remove the two connecting wires.

Step 4



- Using the Phillips #1 screwdriver, remove the two 2.5mm screws holding down the card.

Step 5



- Lift and pull the Wireless LAN card away from the computer.

To reassemble your device, follow these instructions in reverse order.

This document was last generated on 2019-07-09 07:11:27 PM.