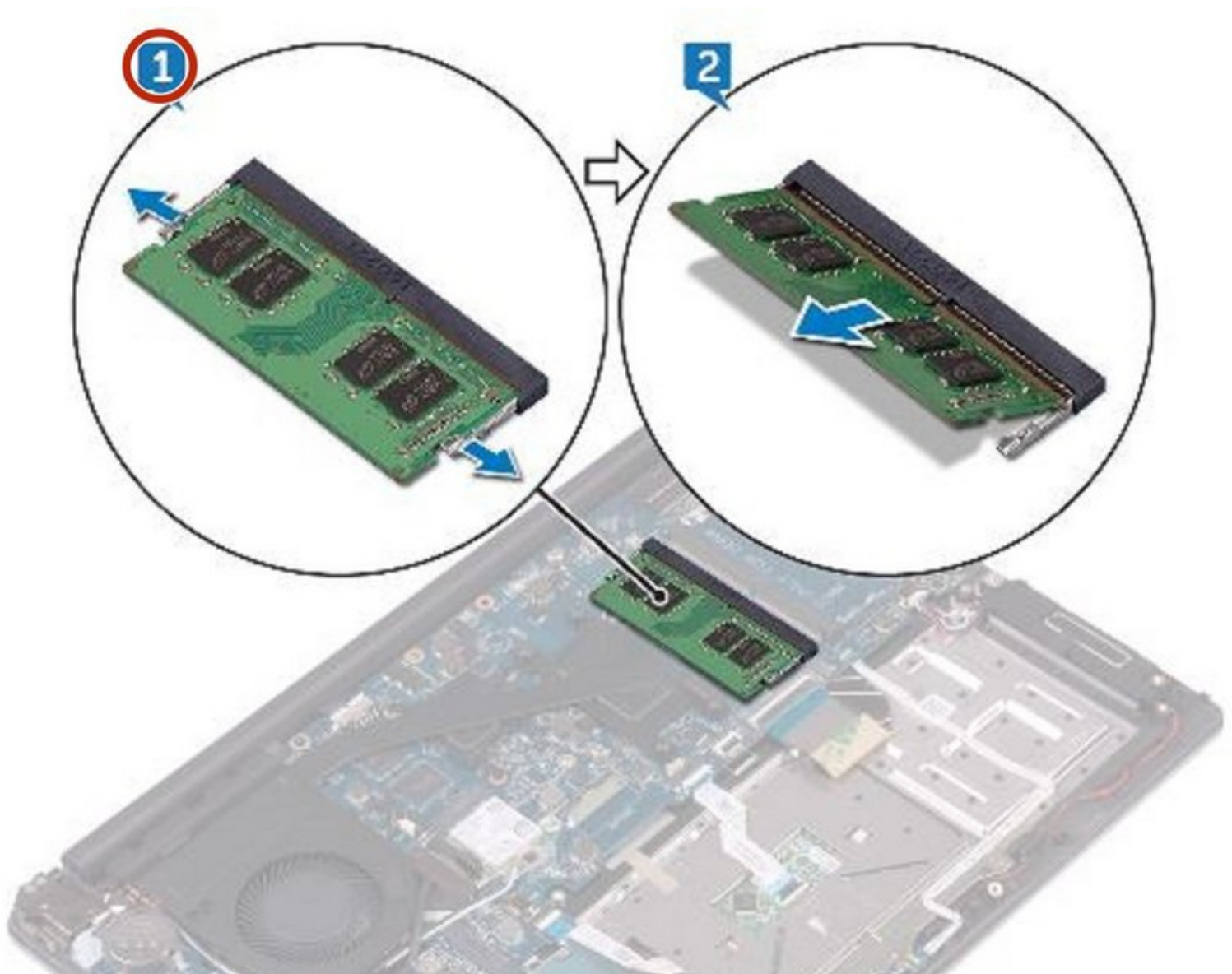




# Dell Inspiron 14 7460 Memory Modules Replacement

Written By: Terrence15



## INTRODUCTION

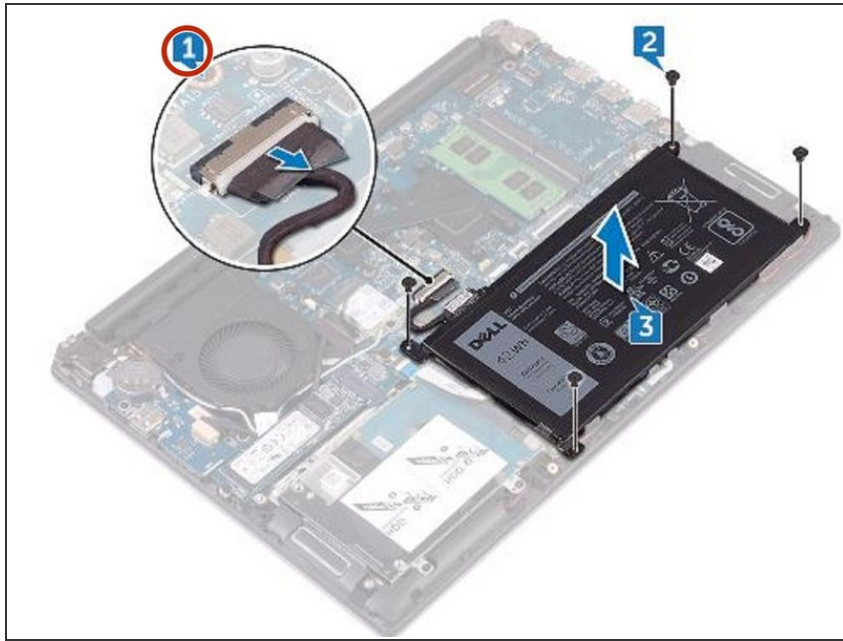
In this guide, we will show you how to remove and replace the Memory Modules.

---

### TOOLS:

- [Essential Electronics Toolkit](#) (1)
-

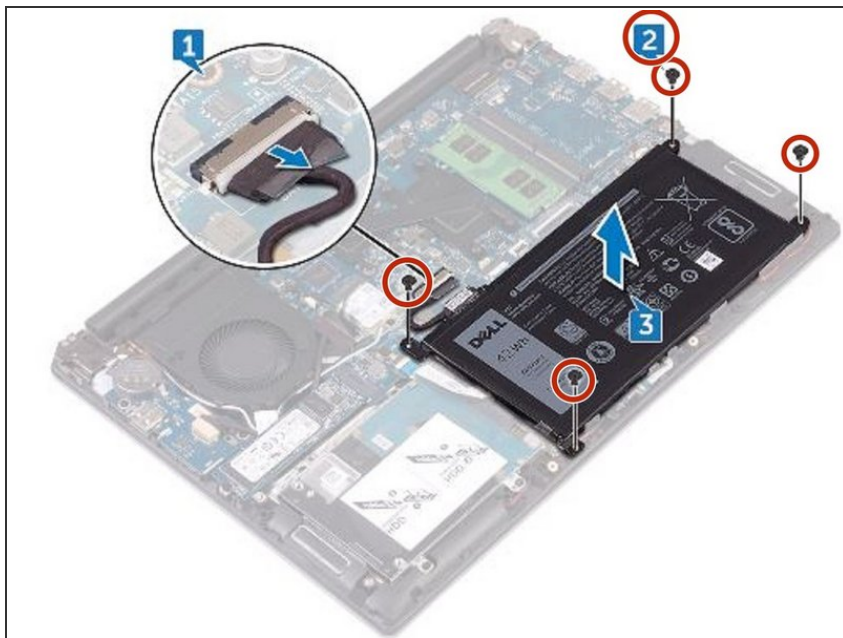
## Step 1 — Disconnecting the Battery Cable



**⚠ WARNING:** Before working inside your computer, read the safety information that shipped with your computer and follow the steps in [Before Working Inside Your Computer](#). After working inside your computer, follow the instructions in [After Working Inside Your Computer](#).

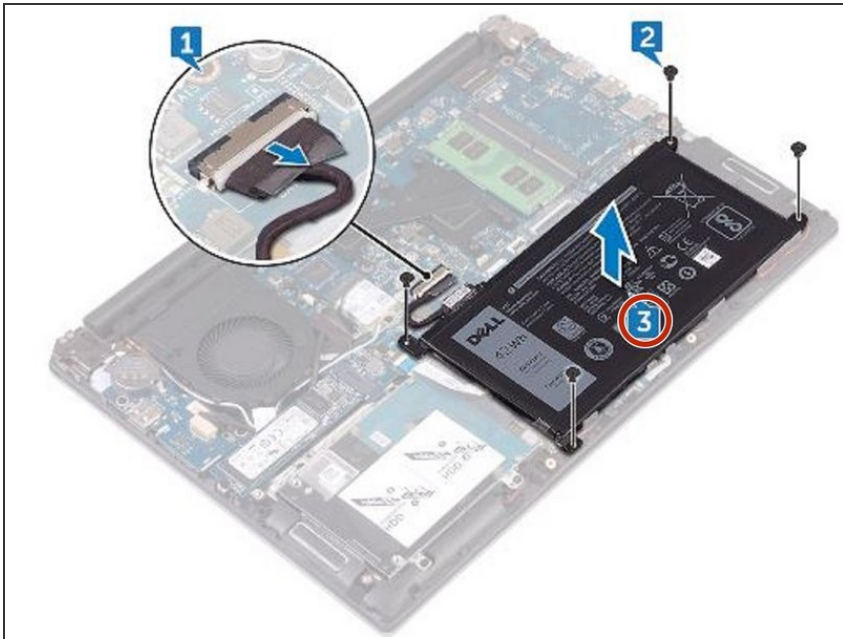
- Disconnect the battery cable from the system board.

## Step 2 — Remove the Screws



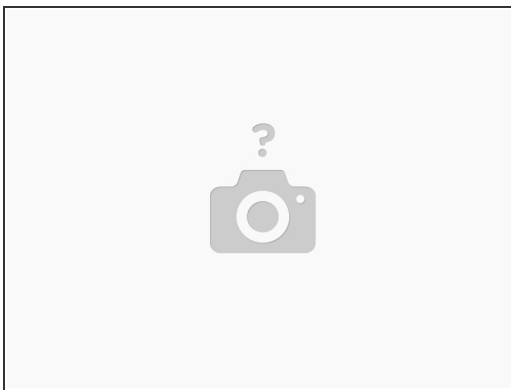
- Remove the four screws (M2x3) that secure the battery to the palm rest and keyboard assembly.

### Step 3 — Lifting the Battery



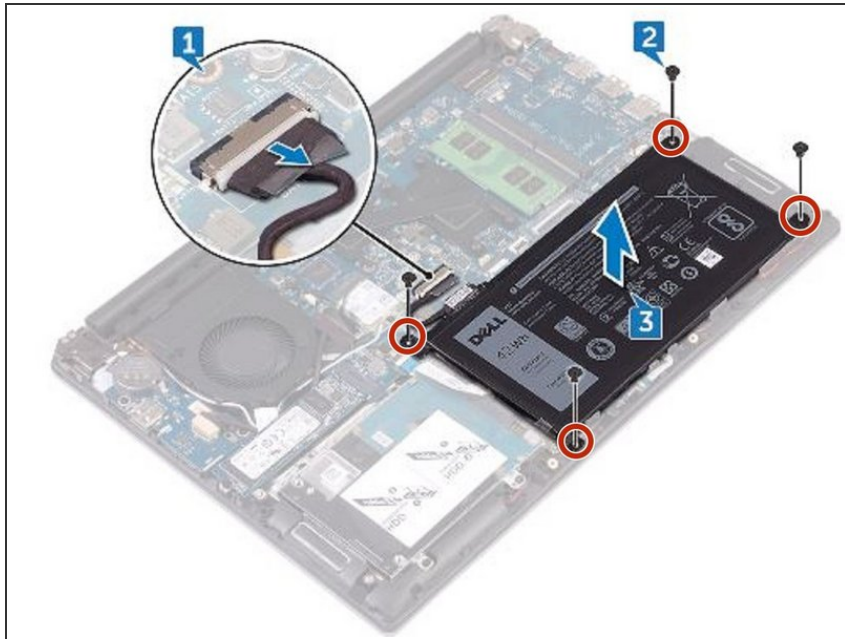
- Lift the battery off the palm rest and keyboard assembly.

### Step 4 — Grounding the System Board



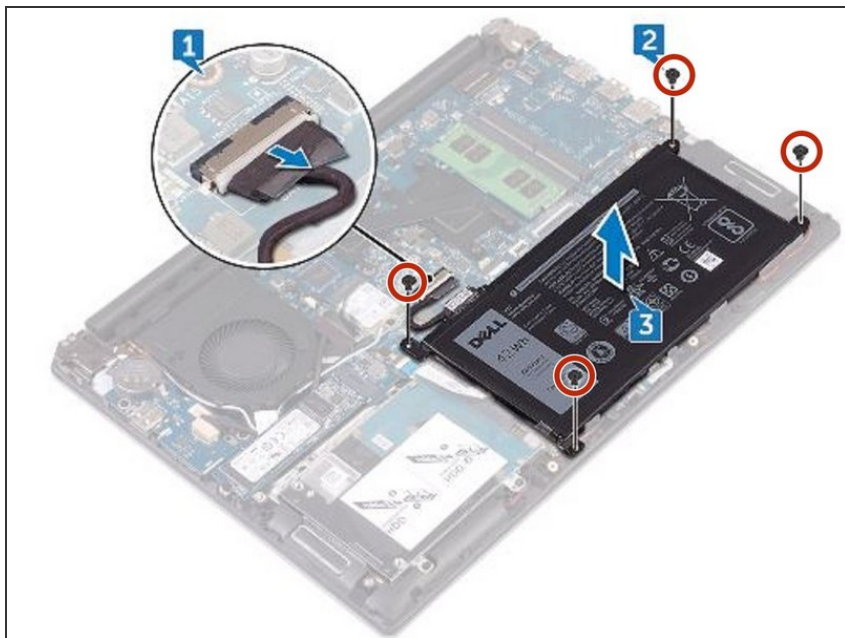
- Press and hold the power button for five seconds to ground the system board.

## Step 5 — Align the Screw Holes



- Align the screw holes on the **NEW** battery with the screw holes on the palm rest and keyboard assembly.

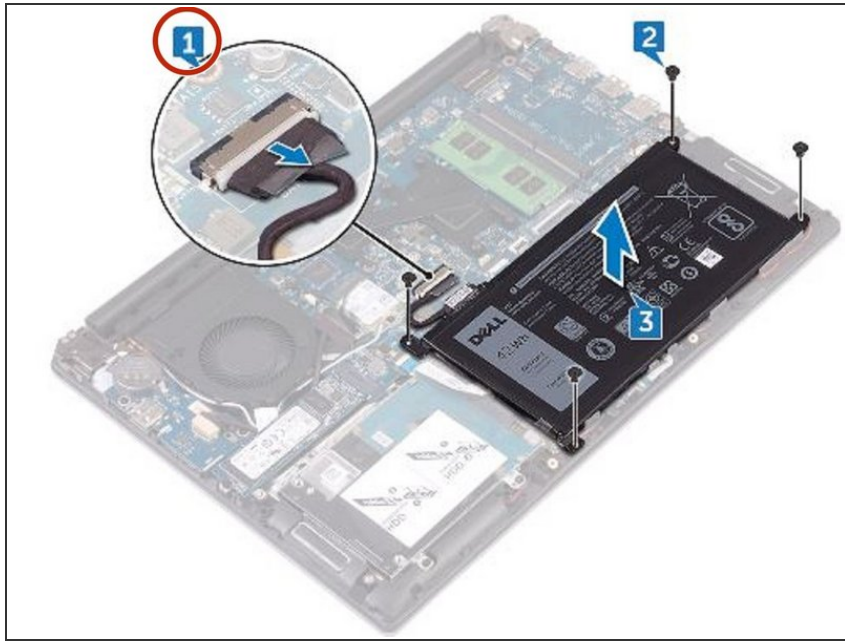
## Step 6 — Replace the Screws



- Replace the four screws (M2x3) that secure the battery to the palm rest and keyboard assembly.

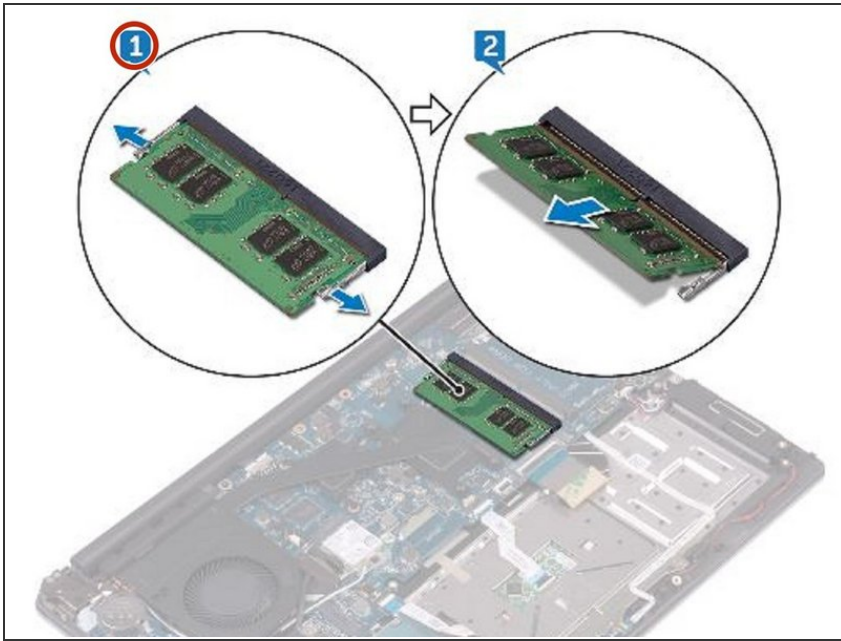


## Step 7 — Connecting the Battery Cable



- Connect the battery cable to the system board.

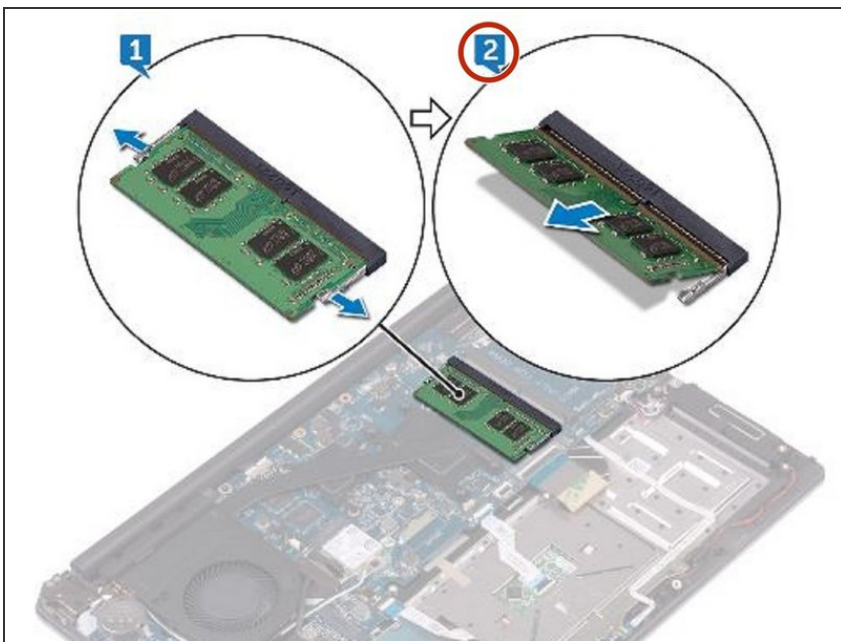
## Step 8 — Popping up the Memory Module



**⚠ WARNING:** Before working inside your computer, read the safety information that shipped with your computer and follow the steps in [Before Working Inside Your Computer](#). After working inside your computer, follow the instructions in [After Working Inside Your Computer](#).

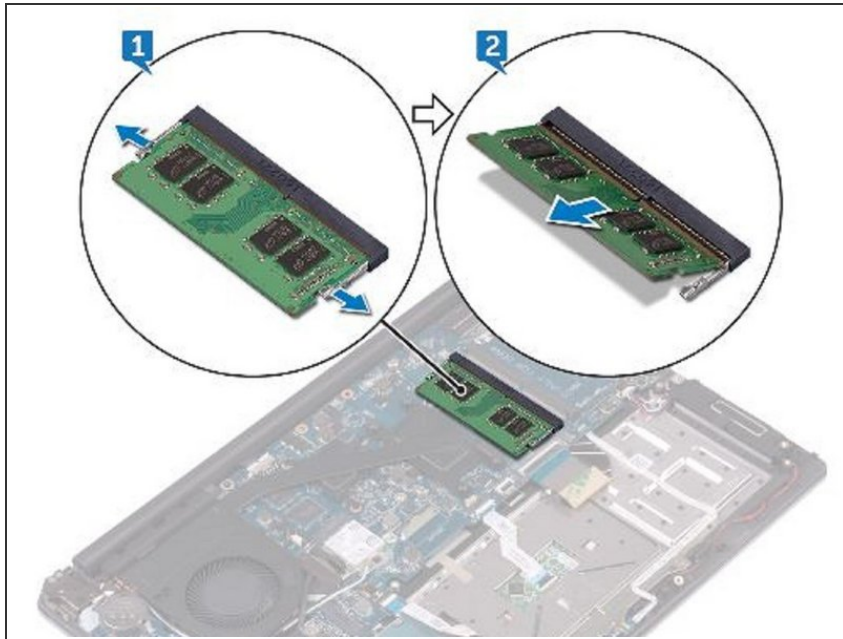
- Use your fingertips to carefully spread apart the securing clips on each end of the memory-module slot until the memory module pops up.

## Step 9 — Removing the Memory Module



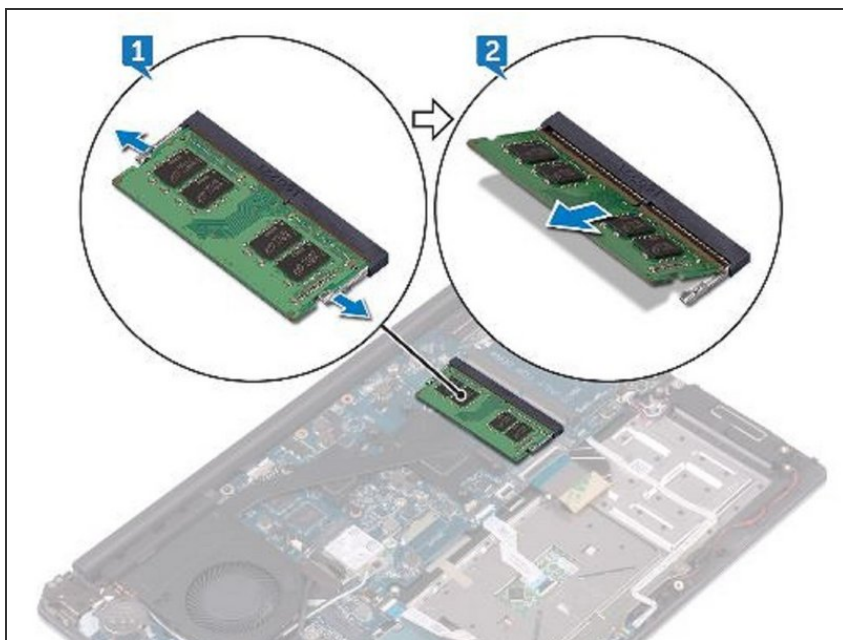
- Remove the memory module from the memory-module slot.

## Step 10 — Align the Notch



- Align the notch on the **NEW** memory module with the tab on the memory-module slot.

## Step 11 — Sliding the Memory Module



- Slide the memory module firmly into the slot at an angle and press the memory module down until it clicks into place.
- ⓘ NOTE: If you do not hear the click, remove the memory module and reinstall it.

To reassemble your device, follow these instructions in reverse order.