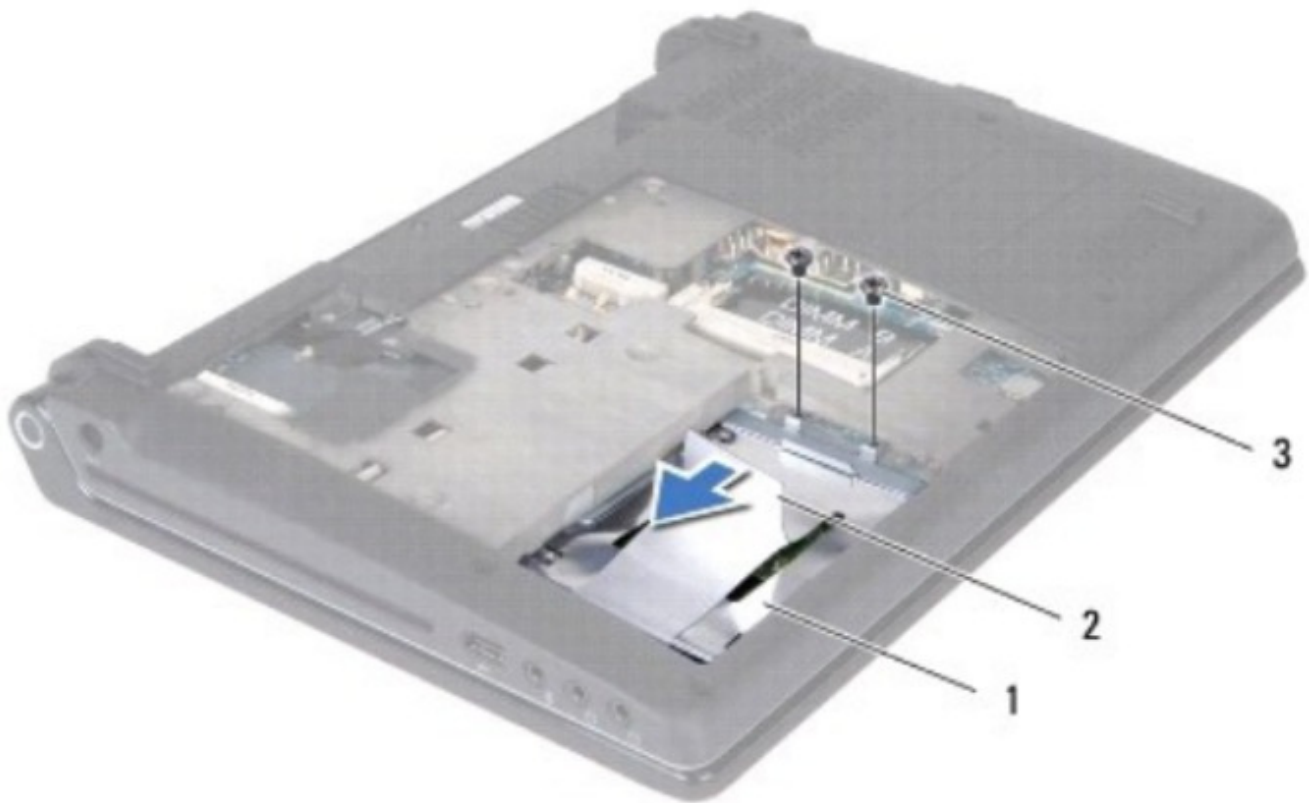




Dell Studio 1457 Hard Drive Replacement

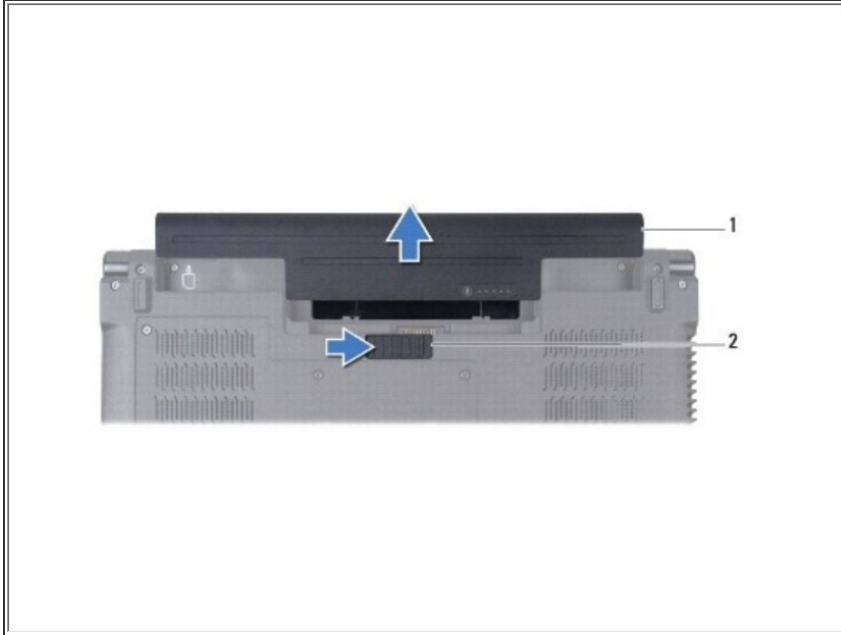
Written By: Johnathan Hammond



 **TOOLS:**

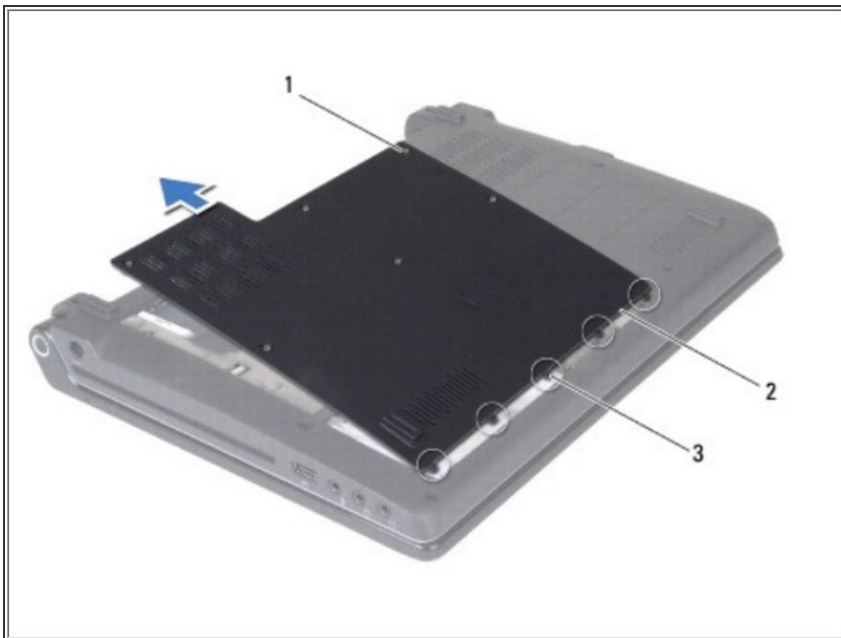
- [Phillips #0 Screwdriver](#) (1)
-

Step 1 — Battery



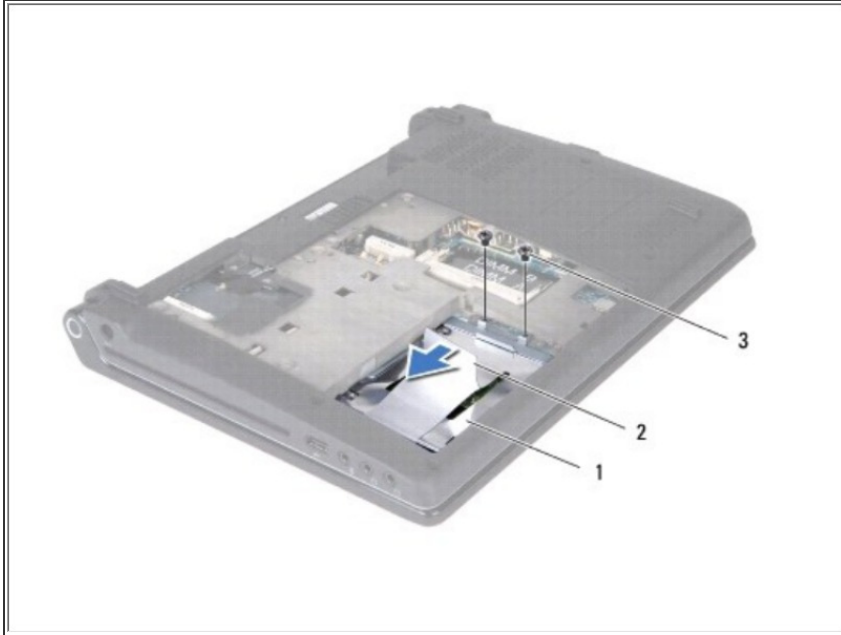
- Slide the battery release latch until it clicks into place.
- Slide the battery out of the battery bay.

Step 2 — Base Cover



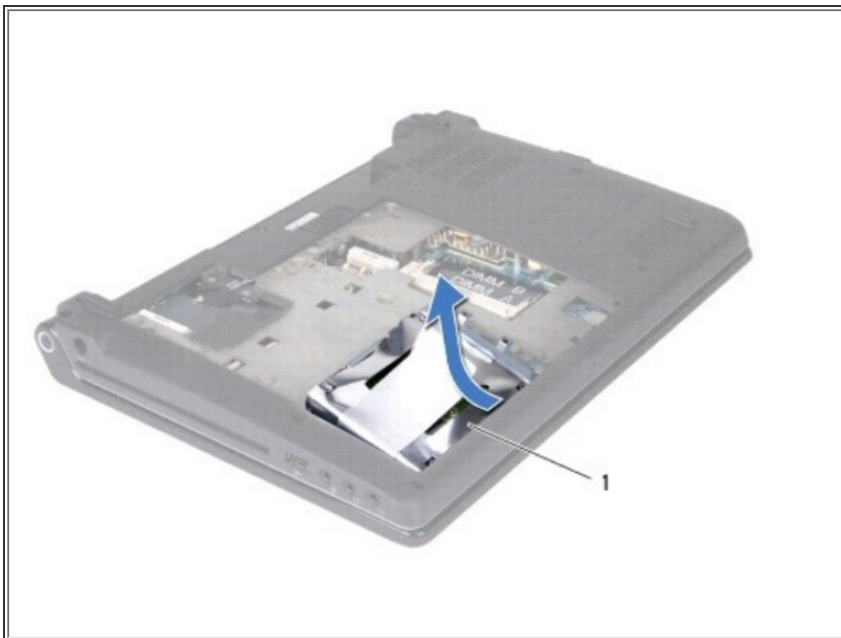
- Turn the computer over and loosen the six captive screws on the base cover.
- Lift the base cover off the computer.

Step 3 — Hard Drive



- Remove the two screws that secure the hard drive to the computer base.
- Slide the hard drive away from the connector using the pull-tab.

Step 4



- Tilt the hard drive by 45-degrees and lift it out of the computer base.

Step 5



- Remove the four screws that secure the hard drive to the hard drive bracket.
- Lift the hard drive off the hard drive bracket.

To reassemble your device, follow these instructions in reverse order.

This document was last generated on 2018-05-27 03:52:53 AM.