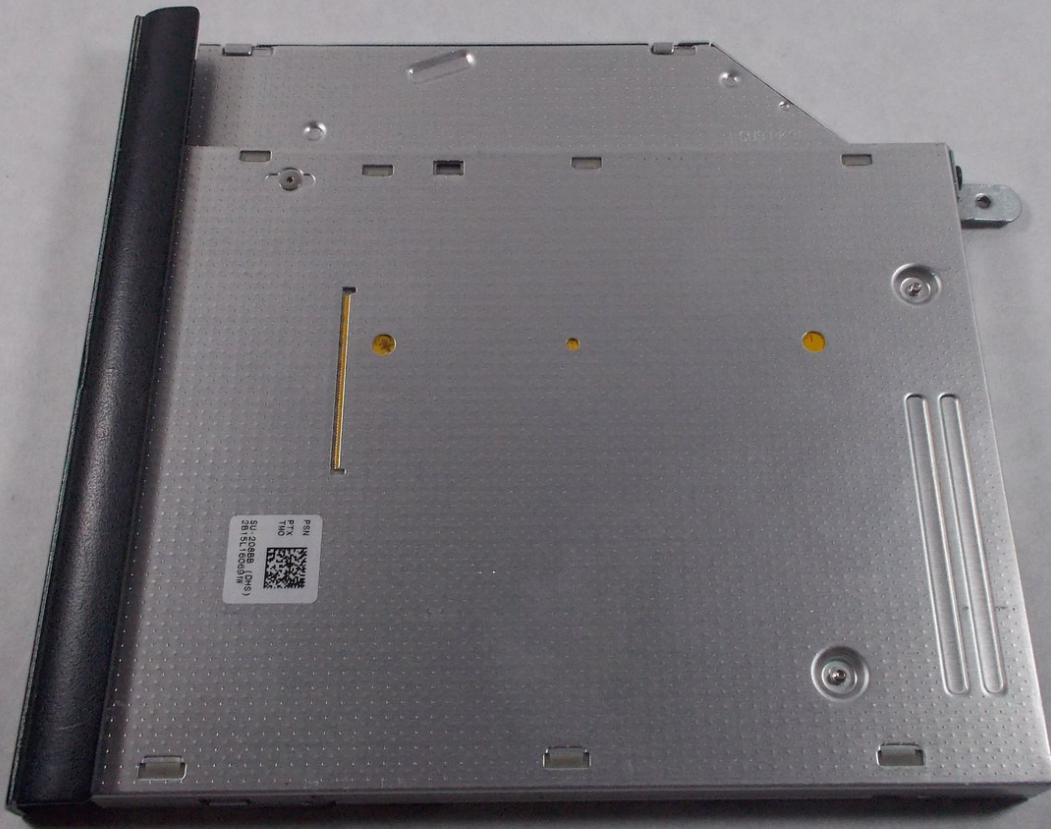




Dell Inspiron 14R-5421 CD Drive Replacement

replace the cd drive

Written By: Jared paiva



INTRODUCTION

this guide will show you how to replace the cd drive

TOOLS:

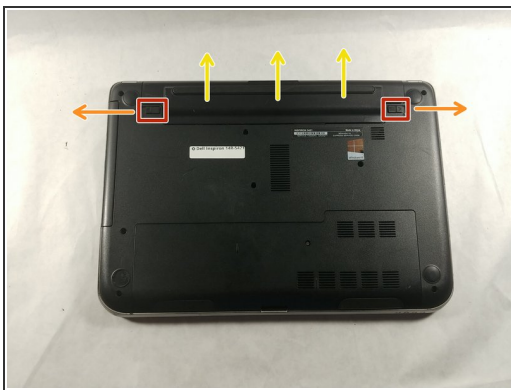
- [Phillips #00 Screwdriver](#) (1)
-

Step 1 — Battery



- Before you begin, make sure your laptop has been turned off.
- Gently turn your laptop over.

Step 2



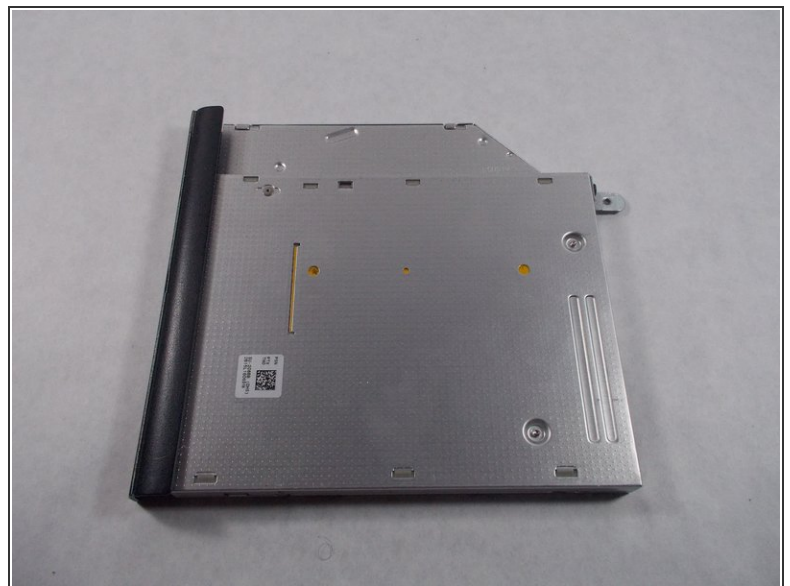
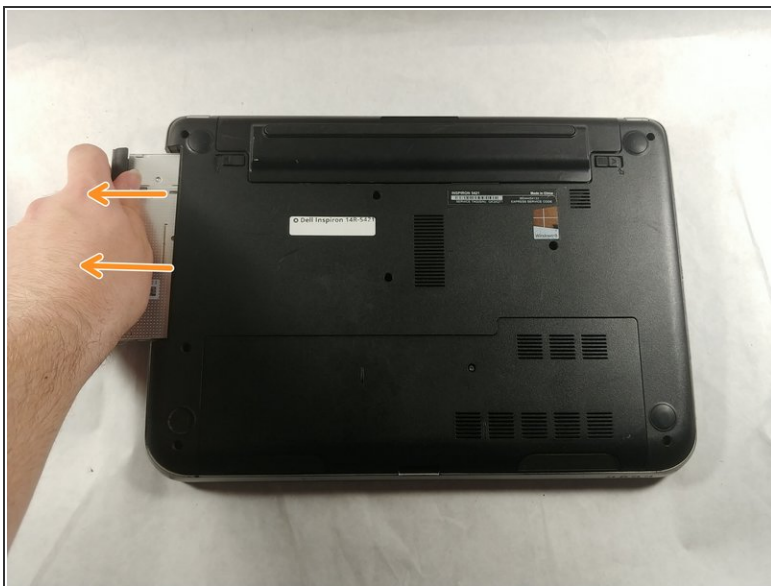
- Find the two sliders that lock the battery in place.
- To remove the battery, press your fingers against the two sliders and push in the direction of the red arrows.
- Remove the battery when it pops up.

Step 3 — CD Drive



- Remove the single screw that secures the cd drive to the laptop noted by the red circle

Step 4



- Now just pull the cd drive until it disconnects from the computer

To reassemble your device, follow these instructions in reverse order.

