



# Dell Precision M4600 Keyboard Trim Replacement

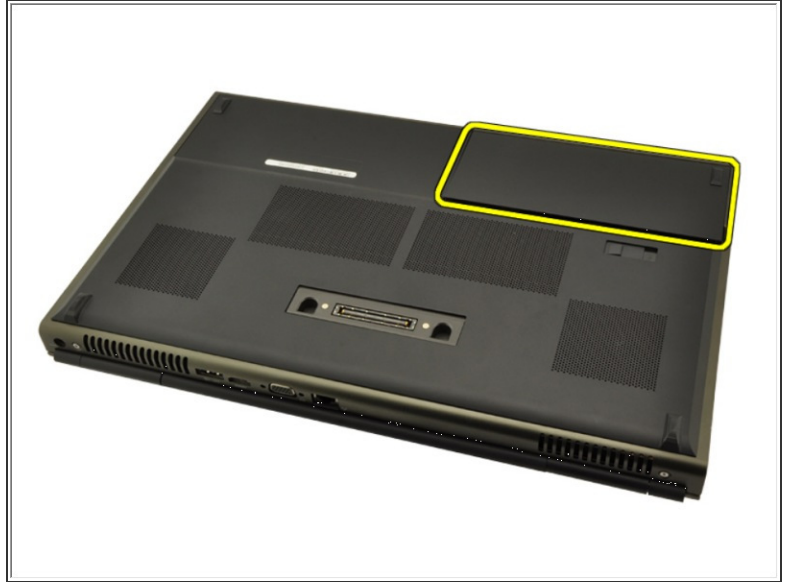
Written By: Johnathan Hammond



 **TOOLS:**

- [Spudger](#) (1)
-

## Step 1 — Battery



- Slide the battery release latch into the unlock position.
- Remove the battery from the system.

## Step 2 — Keyboard Trim



- Using a plastic scribe, pry under the keyboard trim to release it from the computer.
  - Work your way around the sides and bottom edge of the keyboard trim.
  - Lift up to remove the keyboard trim from the unit.

To reassemble your device, follow these instructions in reverse order.