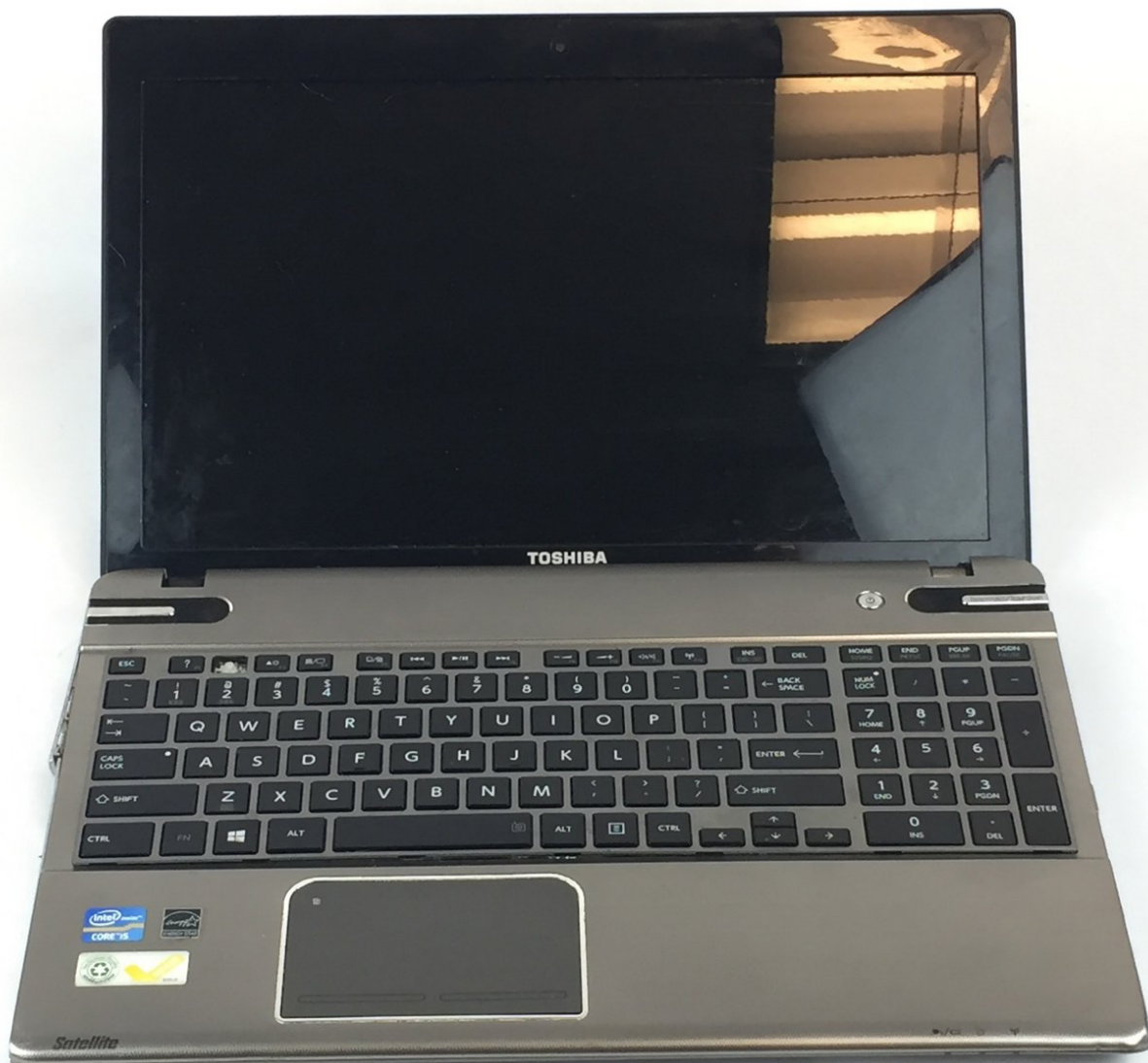




Toshiba Satellite P855-S5102 Keyboard Replacement

Replace your Toshiba Satellite P855-S5102 Keyboard to prevent keys from jamming.

Written By: Benson Smith



INTRODUCTION

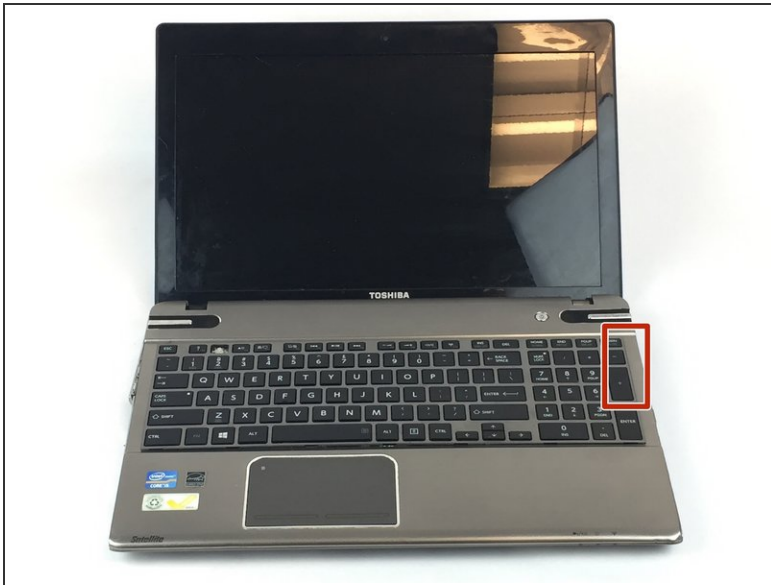
The keyboard is the part of the computer that lets you enter data into it. If the keyboard is sticking or not functioning properly it will be hard to enter data. Below are a few steps on how to remove the keyboard.



TOOLS:

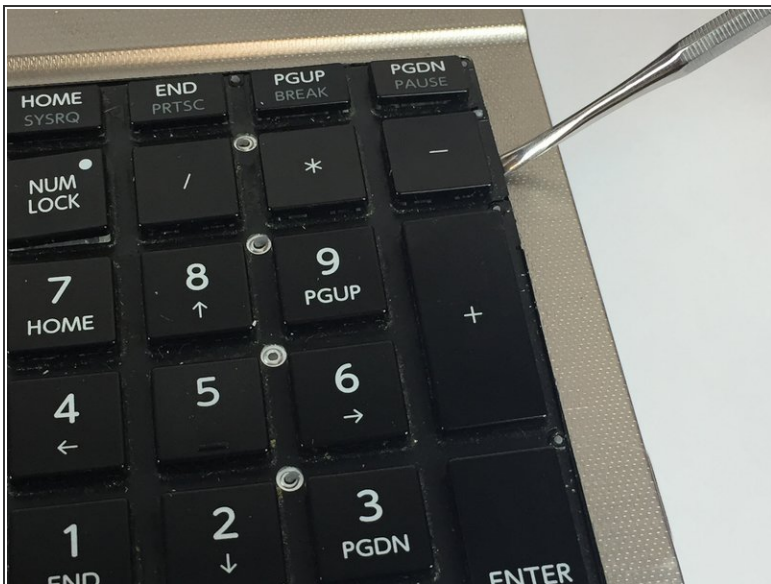
- [iFixit Opening Tools](#) (1)
-

Step 1 — Keyboard



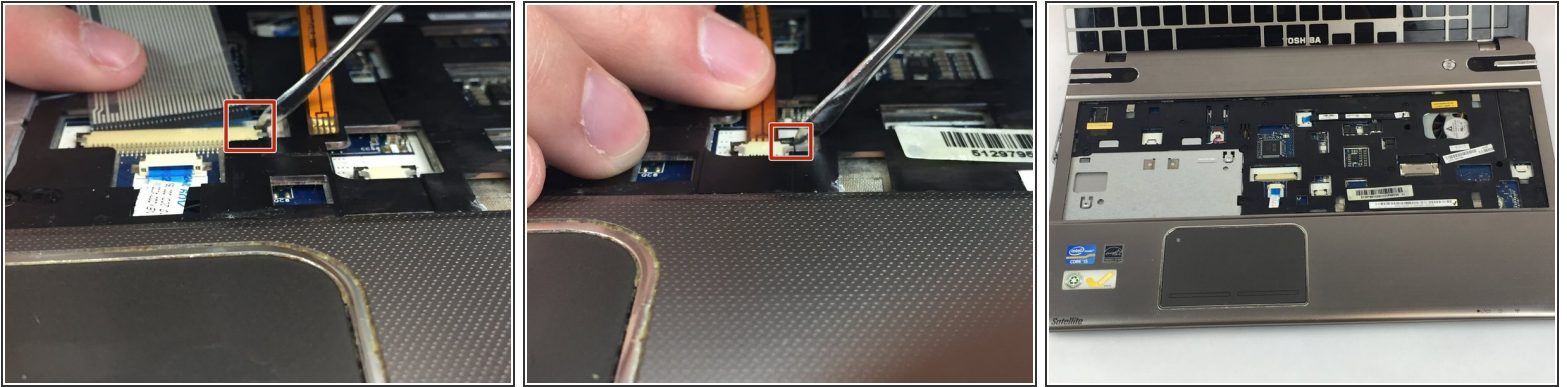
- Use a plastic opening tool to pry up the keyboard cover.

Step 2



- Use a plastic opening tool to pry up the keyboard.

Step 3



- Lay the keyboard upright against the screen.
- Use a spudger to flip up the retaining flap on the keyboard ribbon cable [ZIF](#) socket.
- Remove the ribbon cable from the socket.

To reassemble your device, follow these instructions in reverse order.

This document was last generated on 2019-07-13 12:14:29 PM.