



# ZTE Blade Spark Front Facing Camera Replacement

ZTE Blade Spark Front Camera Replacement step-by-step guide.

Written By: Hung Vu



## INTRODUCTION

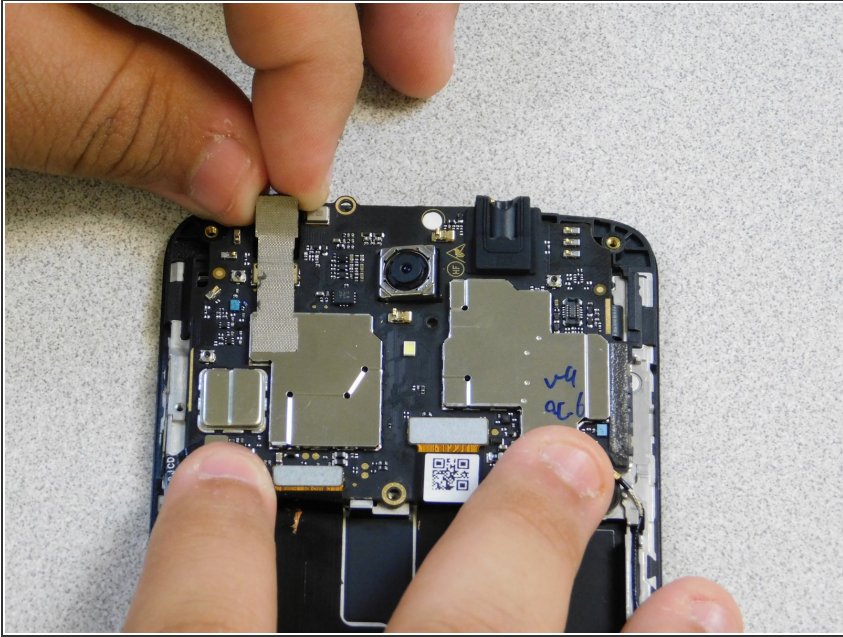
Follow this guide to replace the Front Camera for the ZTE Blade Spark. To get to this step, please see [ZTE Blade Spark Disassembly Guide](#)

---

### TOOLS:

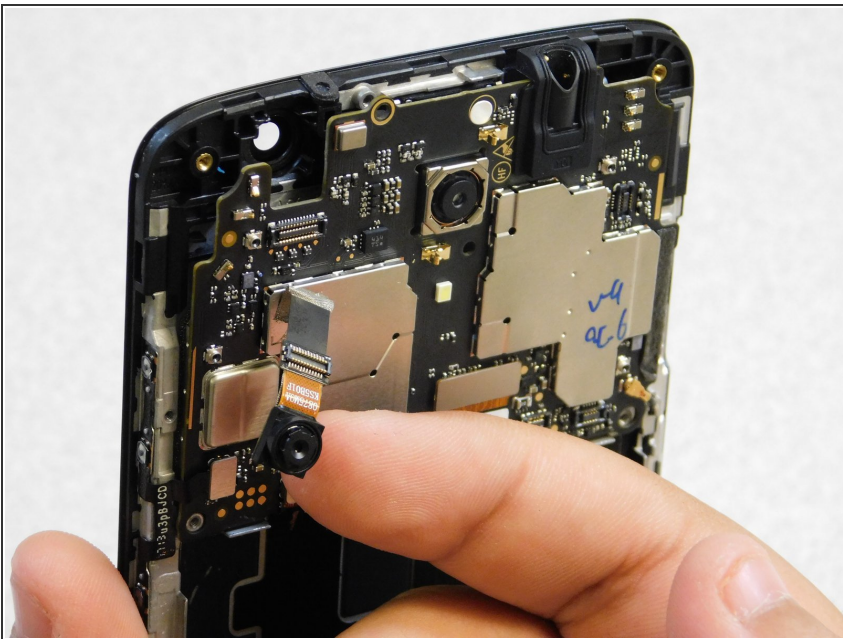
- [Phillips #0 Screwdriver](#) (1)
-

## Step 1 — Front Facing Camera



- Remove Front Facing Camera:
- Locate Front Camera chipset's power connector (as shown in image).
- Disconnect the connector.

## Step 2



- Install replacement Front Camera component:
- Attach replacement front camera component by connecting its corresponding power connector to the device mainframe.
- Then, set the Front Camera component properly in place as originally found.

To reassemble your device, follow the instructions on the ZTE Blade Spark Disassembly guide in reverse order.

