



iMac Intel 20" EMC 2105 and 2118 Access Door Replacement

Written By: Walter Galan



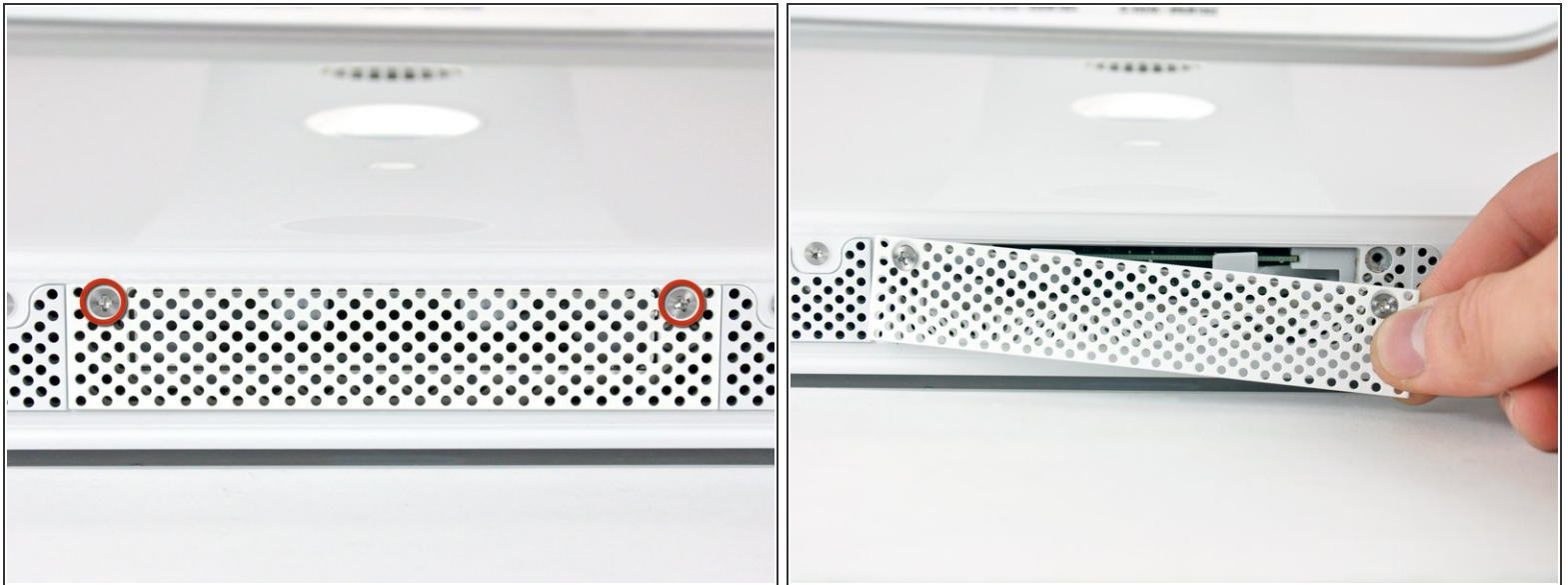
INTRODUCTION

Remove the access door to replace RAM chips.

TOOLS:

- [Phillips #1 Screwdriver](#) (1)
-

Step 1 — Access Door



- Loosen the two Phillips screws securing the access door to your iMac.
 - ⓘ Both screws remain captive within the access door.
 - Remove the access door.
- ⚠ Before beginning the repair, unplug the computer and press and hold the power switch for 20-30 seconds, to discharge internal capacitors.**

To reassemble your device, follow these instructions in reverse order.