



# LG Rebel Front Camera Replacement

How to replace an LG Rebel front camera.

Written By: Lesley Sigaran



---

## INTRODUCTION

This is a guide to replace a broken or damaged front camera on the LG Rebel. this could apply to having a cracked screen or shattered front camera. Following these steps will help you in replacing your front camera.

---

### TOOLS:

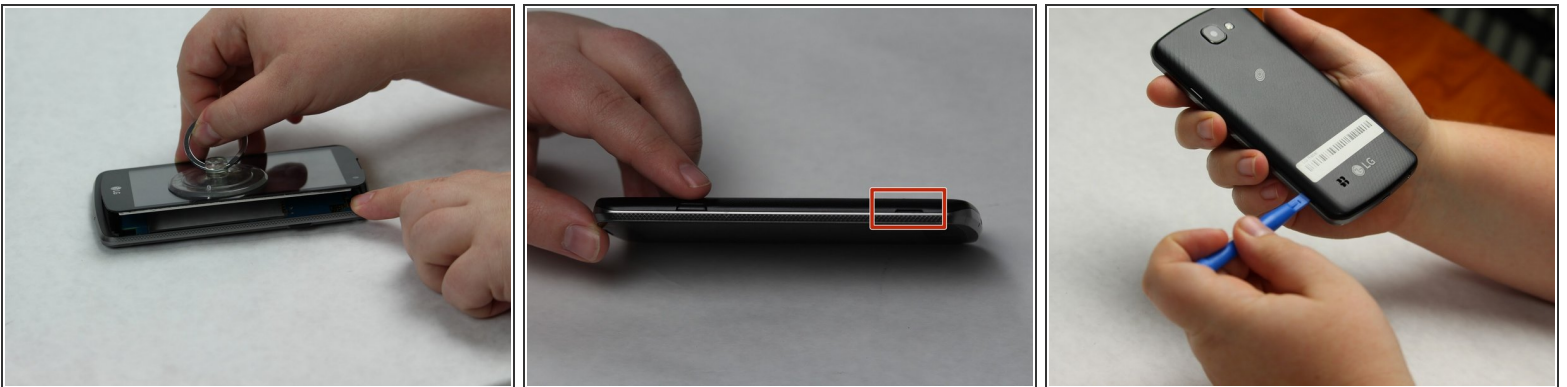
- [iFixit Opening Tools](#) (1)
  - [Spudger](#) (1)
  - [Suction Handle](#) (1)
-

## Step 1 — Front Camera



- Turn phone over to its front side.
- Use a spudger to begin removing the screen by the right hand corner. Begin to move the tool around the edges of the screen.

## Step 2



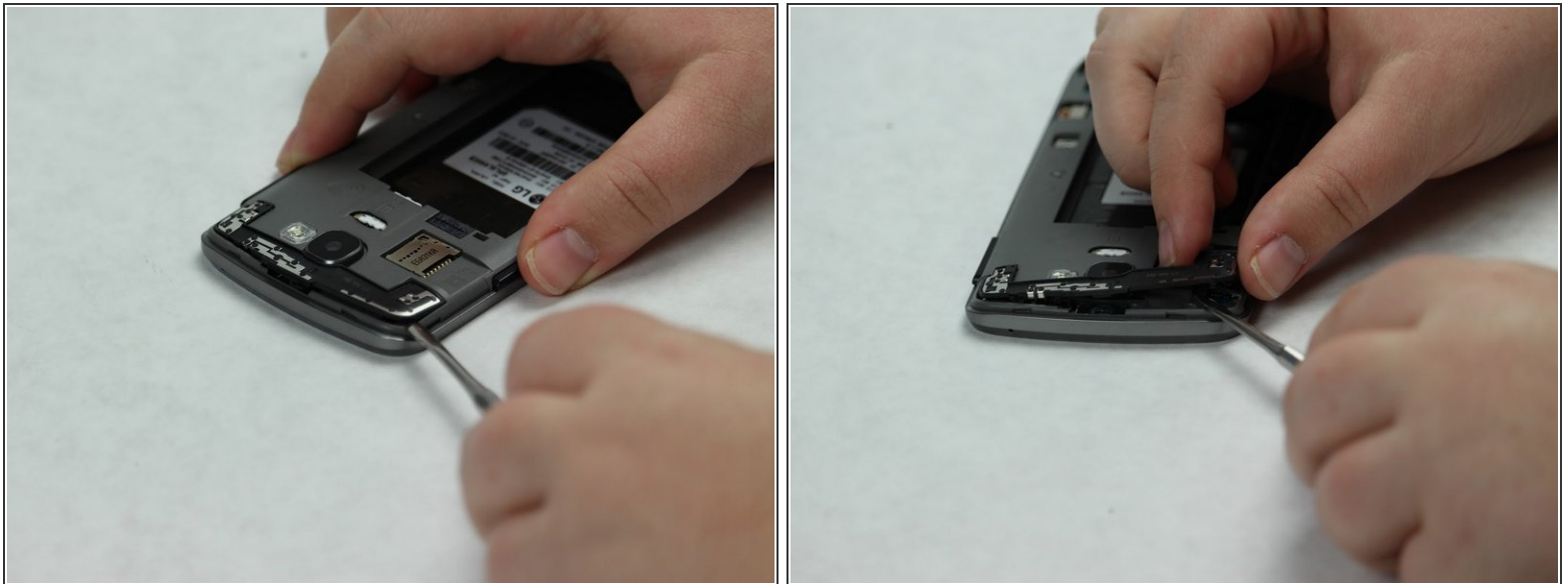
- Once you have loosened the grip around the edges, pop off the screen using a suction cup.
- Once the front screen is removed, place the phone on its side and find the groove located on the side.
- Use the plastic opening tool to pop open the black plastic covering.
- Remove black plastic cover.

### Step 3



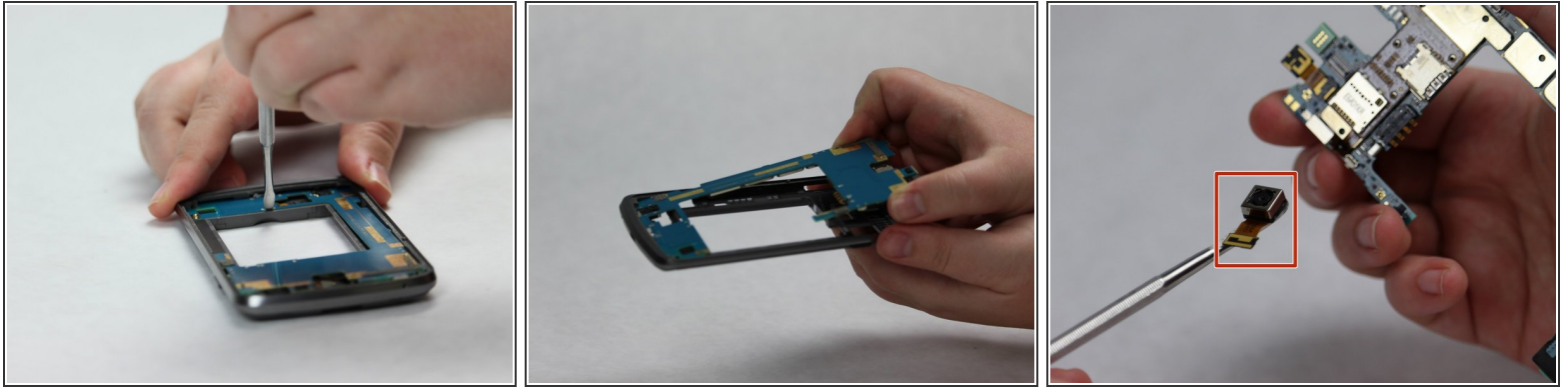
- Locate the small groove on the back of the phone near the bottom.
- Use the metal spudger to pop open the black plastic covering.
- Remove black plastic covering.

### Step 4



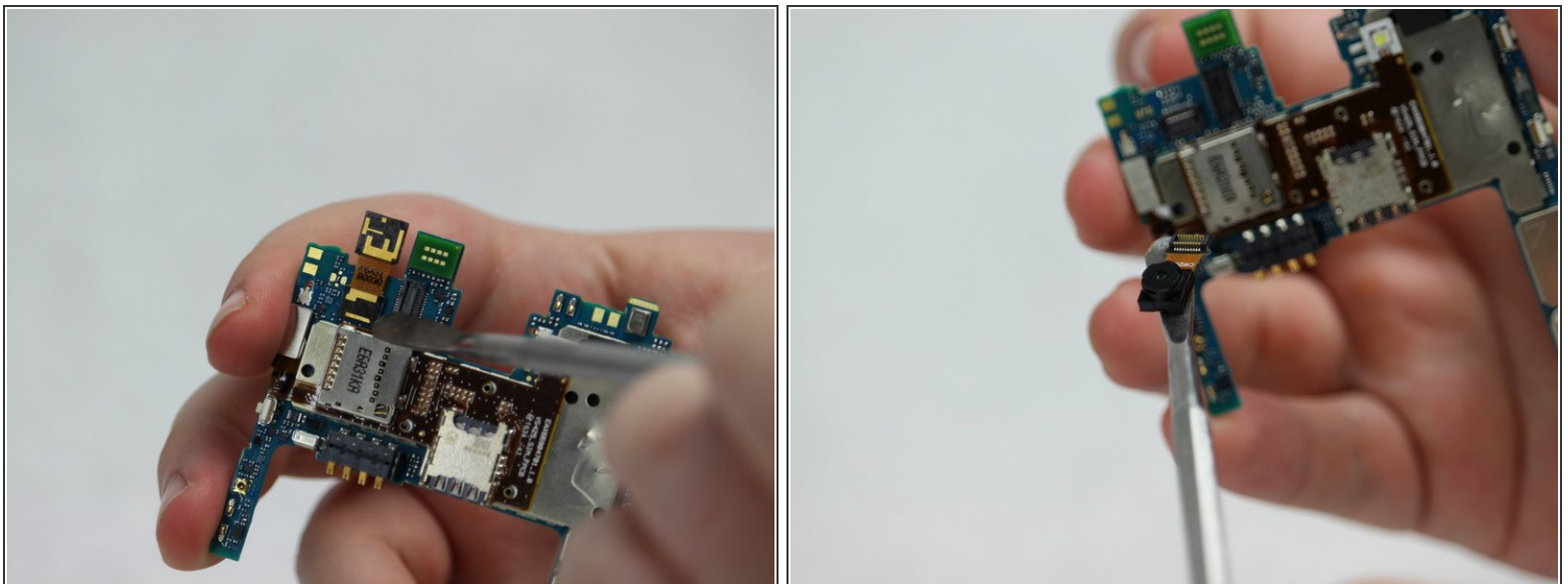
- Use the metal spudger to pop up the black plastic covering near top of phone.
- Remove the black plastic covering.

## Step 5



- Remove the motherboard with a spudger.
- Slowly begin to lift motherboard with your hand carefully.
- Once the motherboard is completely off, set the phone to the side and focus on the small black box with a square tail (which is the front camera).

## Step 6



- Remove the front camera by its tail with a spudger.

To reassemble your device, follow these instructions in reverse order.