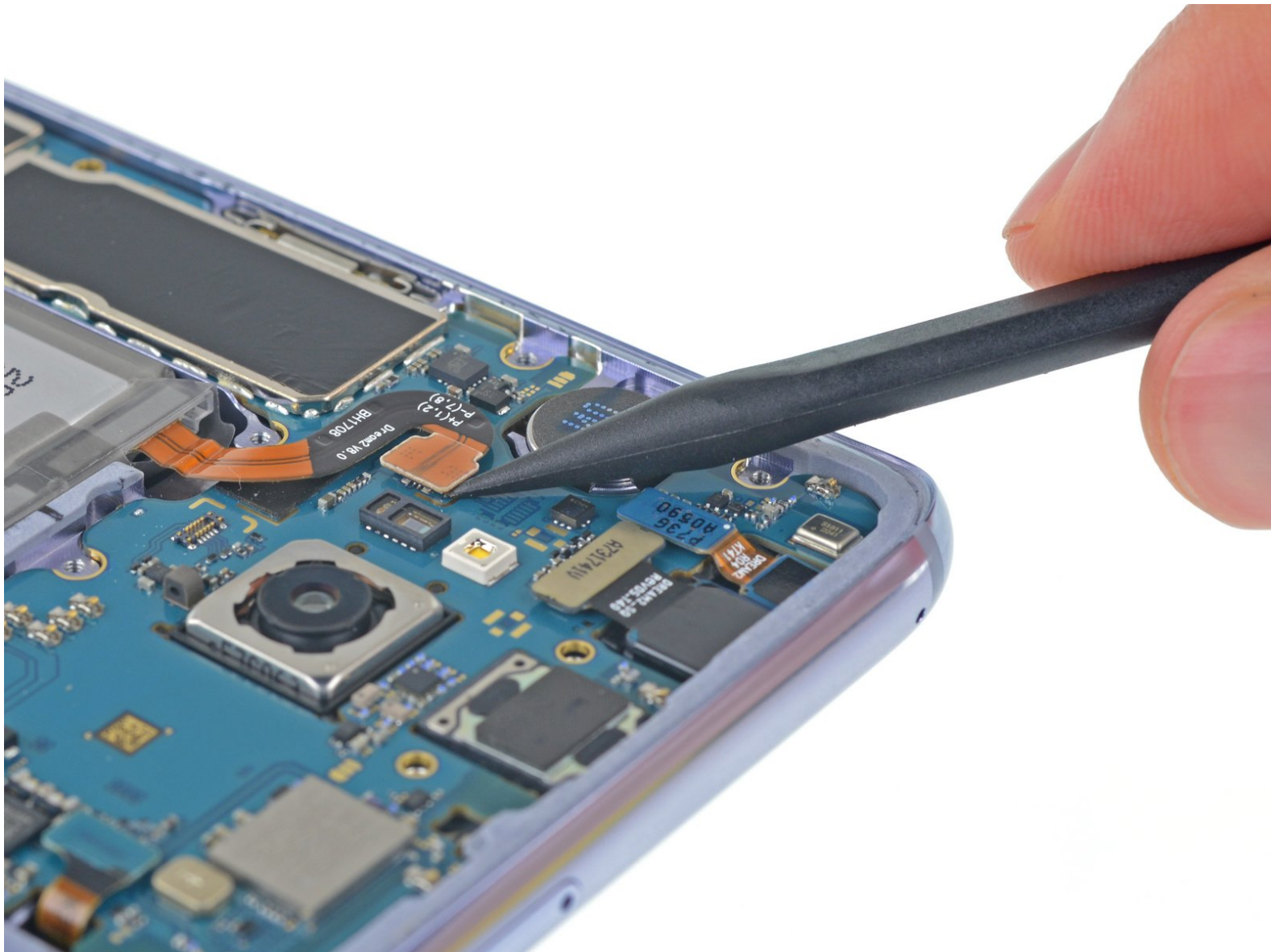




Disconnecting the Samsung Galaxy S8+ Battery

Prerequisite-only guide for disconnecting the battery to effect further repairs.

Written By: Jeff Suovanen



INTRODUCTION

Prerequisite-only instructions for disconnecting the battery in the Samsung Galaxy S8+.

TOOLS:

- [iOpener](#) (1)
 - [iFixit Opening Picks set of 6](#) (1)
 - [Suction Handle](#) (1)
 - [Tweezers](#) (1)
 - [Spudger](#) (1)
 - [Microfiber Cleaning Cloths](#) (1)
 - [Phillips #00 Screwdriver](#) (1)
 - [Isopropyl Alcohol](#) (1)
-

Step 1 — Disconnecting the Samsung Galaxy S8+ Battery



- Remove the eleven 3.7 mm Phillips screws securing the wireless charging coil + antenna assembly.
- If any screws are difficult to remove even when fully loosened, you can pull them out with tweezers.

Step 2



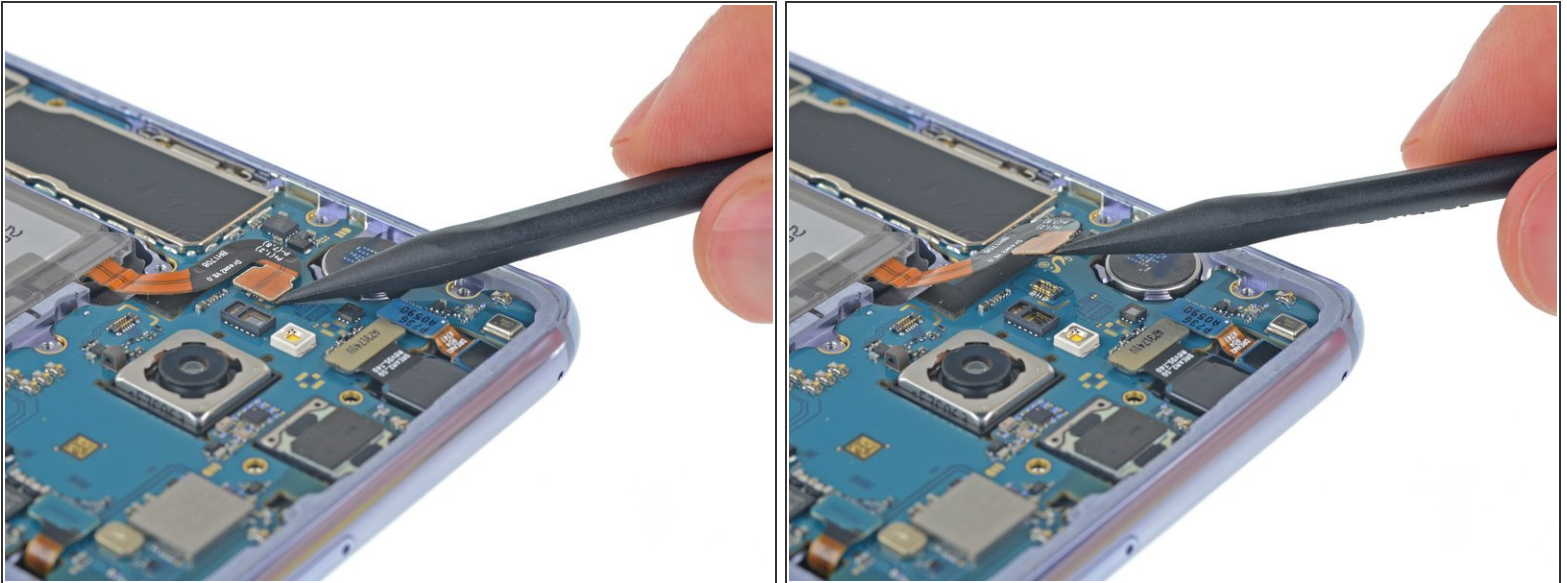
- i** The wireless charging coil + antenna assembly is also secured with small plastic clips.
- Use a spudger to gently pry up the plastic in the marked areas to pop the clips free.

Step 3



- Remove the wireless charging coil + antenna assembly.
- ✦** To reinstall, first insert the top edge of the assembly into the phone's frame, and then gently press down on the rest of the assembly to snap it into place.

Step 4



- Use a spudger to disconnect the battery by prying the connector straight up from its socket.

To reassemble your device, follow these instructions in reverse order.