



Toshiba Satellite C55-A5302 Battery Replacement

Properly teach others how to replace and notice a faulty battery

Written By: Kevin Wu



INTRODUCTION

Toshiba had a massive battery recall in 2016 . Replace your old faulty batteries with new ones using this replacement guide.

Step 1 — Battery



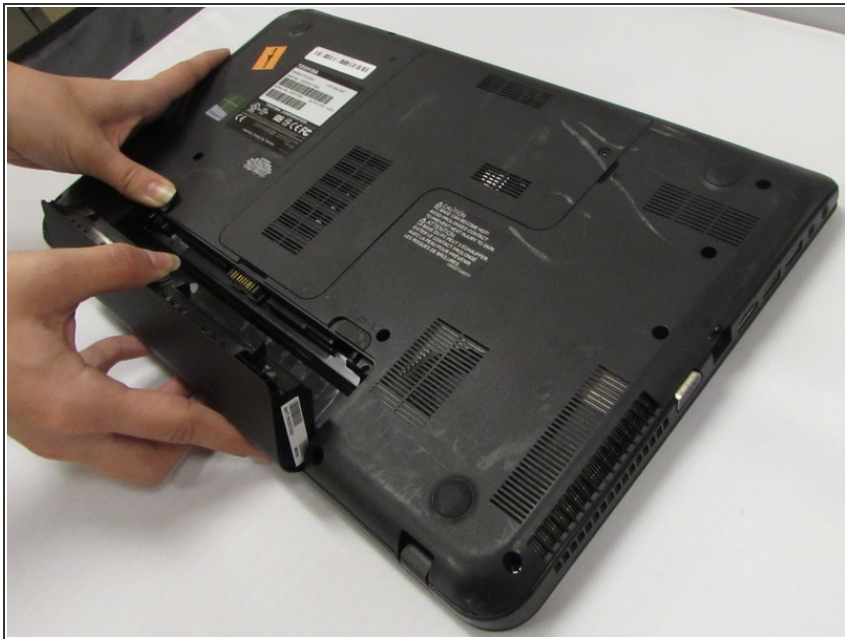
- Power down the laptop and remove all power cords. After this is done, turn the laptop over.

Step 2



- Slide the battery latches outwards away from the center of the device.
- ⓘ The right latch will slide to the right, and left latch to the left.

Step 3



- Lift and remove the battery from the device.

To reassemble your device, follow these instructions in reverse order.

This document was last generated on 2018-06-15 02:47:22 AM.