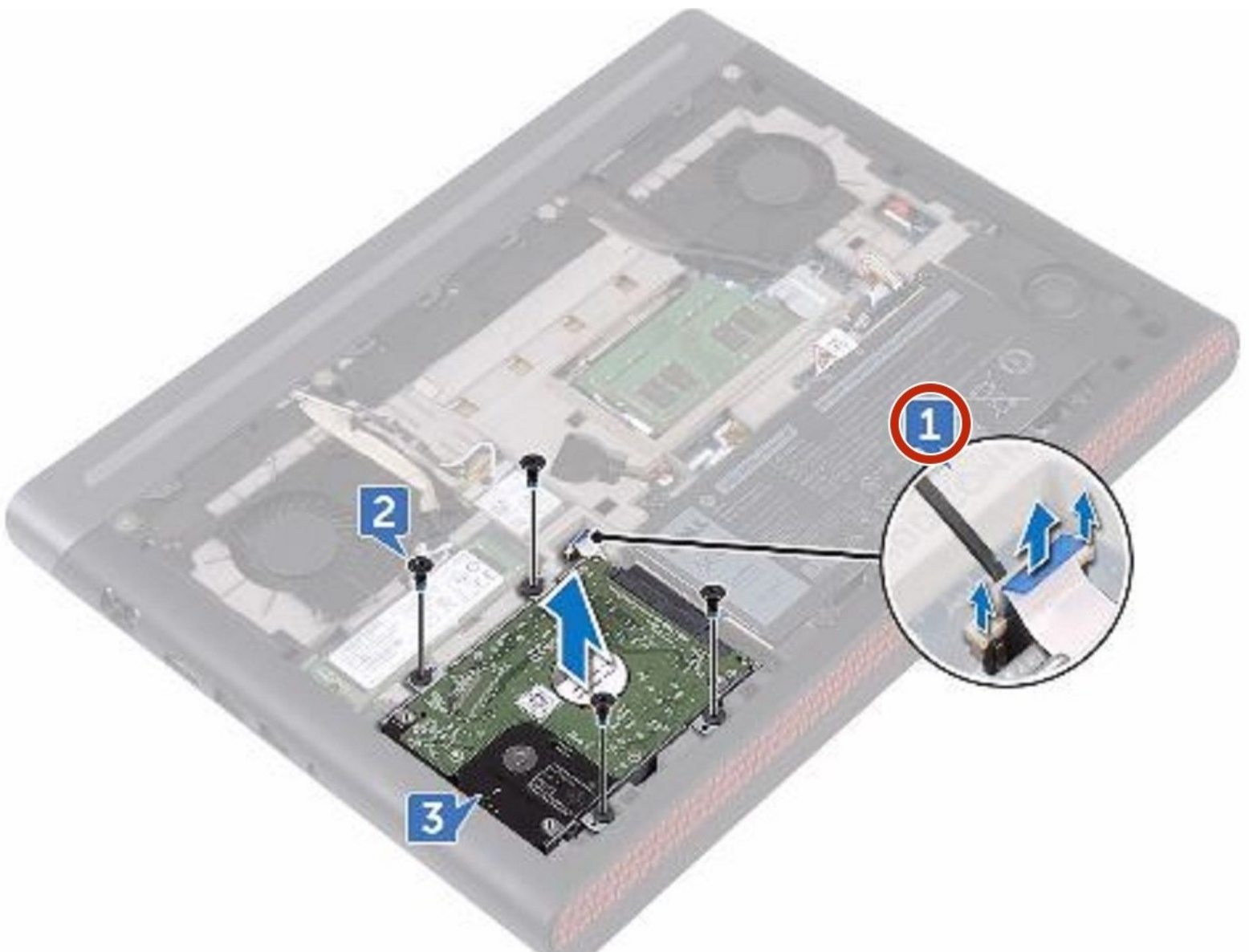




# Dell Inspiron 14 Gaming 7466 Hard Drive Replacement

Written By: Terrence15



---

## INTRODUCTION

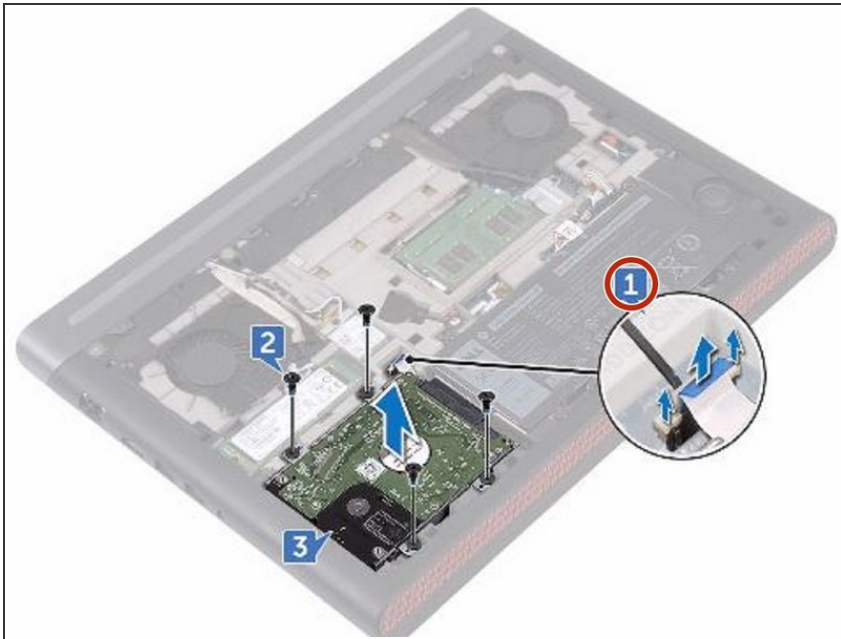
In this guide, we will show you how to remove and replace the Hard Drive.

---

### TOOLS:

- [Phillips #0 Screwdriver](#) (1)
-

## Step 1 — Disconnecting the Hard Drive Cable



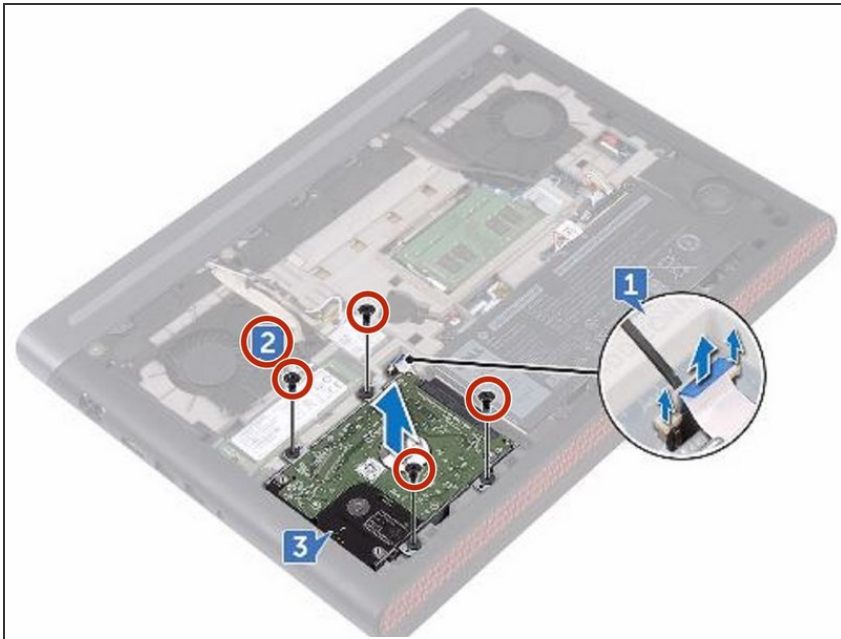
**⚠ WARNING:** Before working inside your computer, read the safety information that shipped with your computer and follow the steps in [Before Working Inside Your Computer](#). After working inside your computer, follow the instructions in [After Working Inside Your Computer](#).

**⚠ CAUTION:** Hard drives are fragile. Exercise care when handling the hard drive.

**⚠ CAUTION:** The latch on the hard-drive locking connector is fragile. Pulling the latch forcefully may damage the hard-drive locking connector. Exercise care when handling the latch on the hard-drive locking connector.

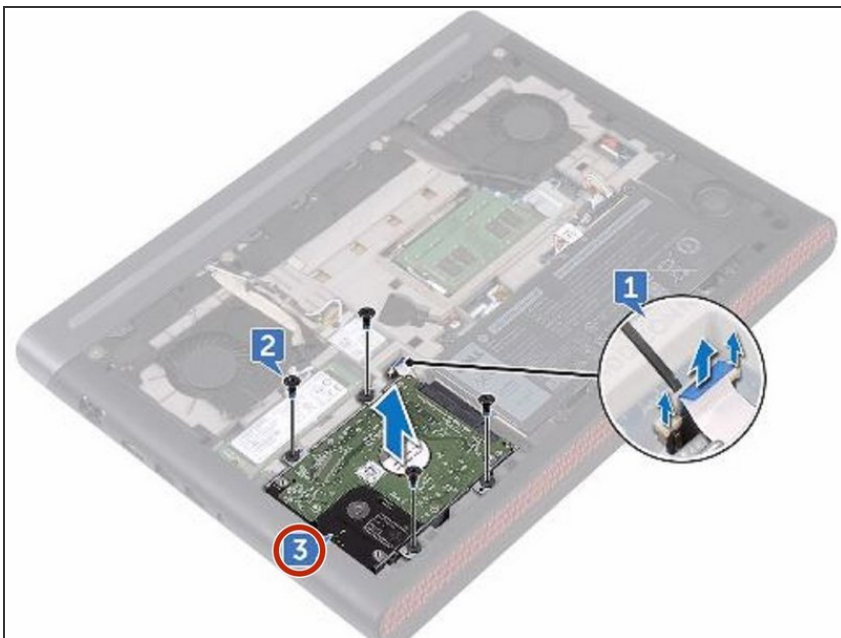
- Using a plastic scribe, lift the latch and use the pull tab to disconnect the hard-drive cable from the system board.

## Step 2 — Remove the Screws



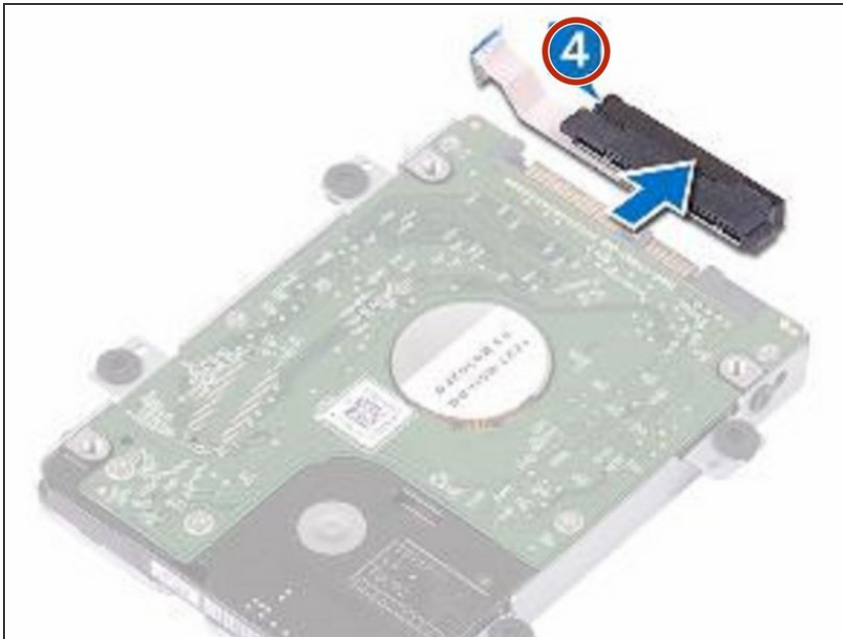
- Remove the four screws (M2.5x3 Ladder type) that secure the hard-drive assembly to the computer base.

## Step 3 — Lifting the Hard Drive Assembly



- Lift the hard-drive assembly, along with its cable, off the computer base.

## Step 4 — Disconnecting the Interposer



- Disconnect the interposer from the hard-drive assembly.

## Step 5 — Remove the Screws



- Remove the four screws (M3x3) that secure the hard-drive bracket to the hard drive.



## Step 6 — Remove the Hard-Drive Bracket



- Remove the hard-drive bracket off the hard drive.

## Step 7 — Align the Screw Holes



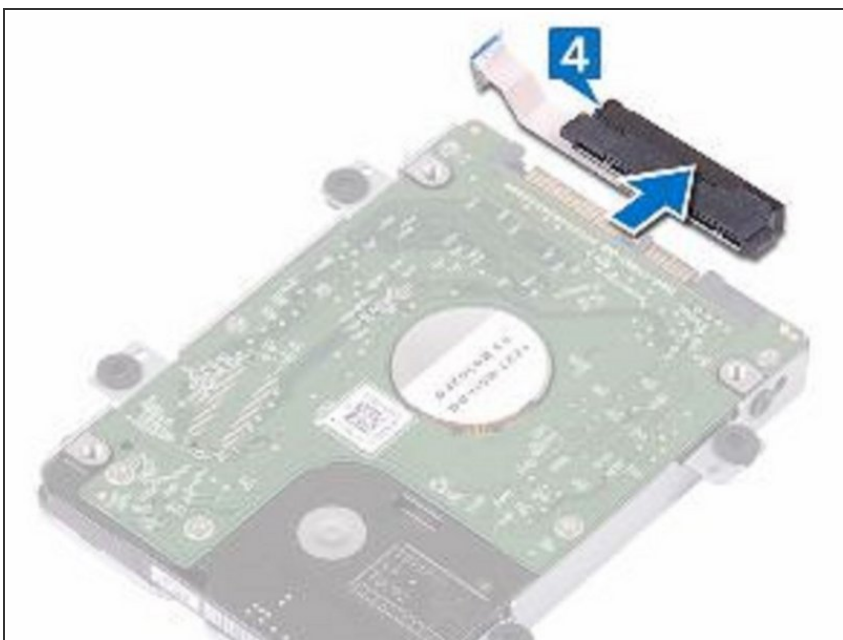
- Align the screw holes on the hard drive-bracket with the screw holes on the **NEW** hard drive.

## Step 8 — Replace the Screws



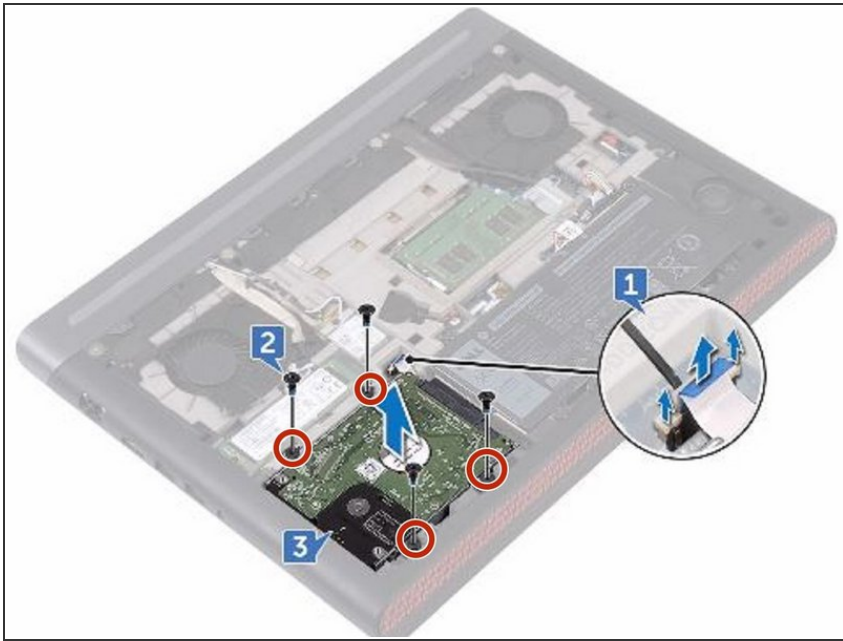
- Replace the four screws (M3x3) that secure the hard-drive bracket to the hard drive.

## Step 9 — Connecting the Interposer



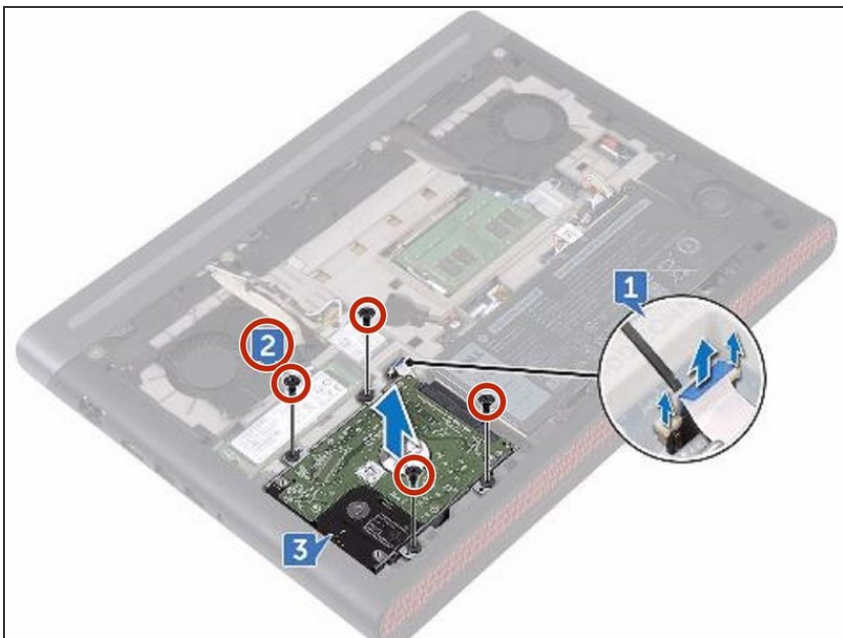
- Connect the interposer to the hard drive.

## Step 10 — Align the Screw Holes



- Align the screw holes on the hard-drive assembly with the screw holes on the computer base.

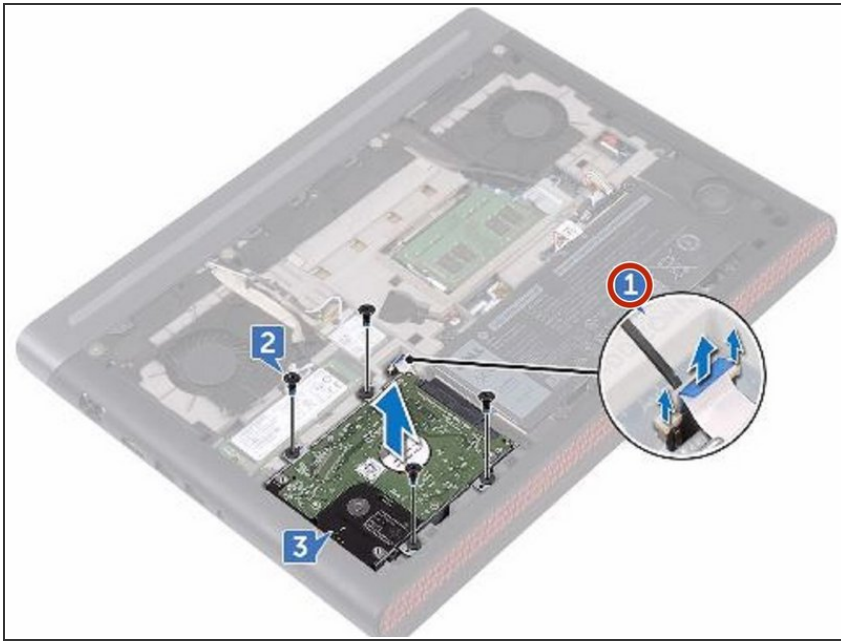
## Step 11 — Replace the Screws



- Replace the four screws (M2.5x3 Ladder type) that secure the hard-drive assembly to the computer base.



## Step 12 — Connect the Hard Drive Cable



- Connect the hard-drive cable to the system board.