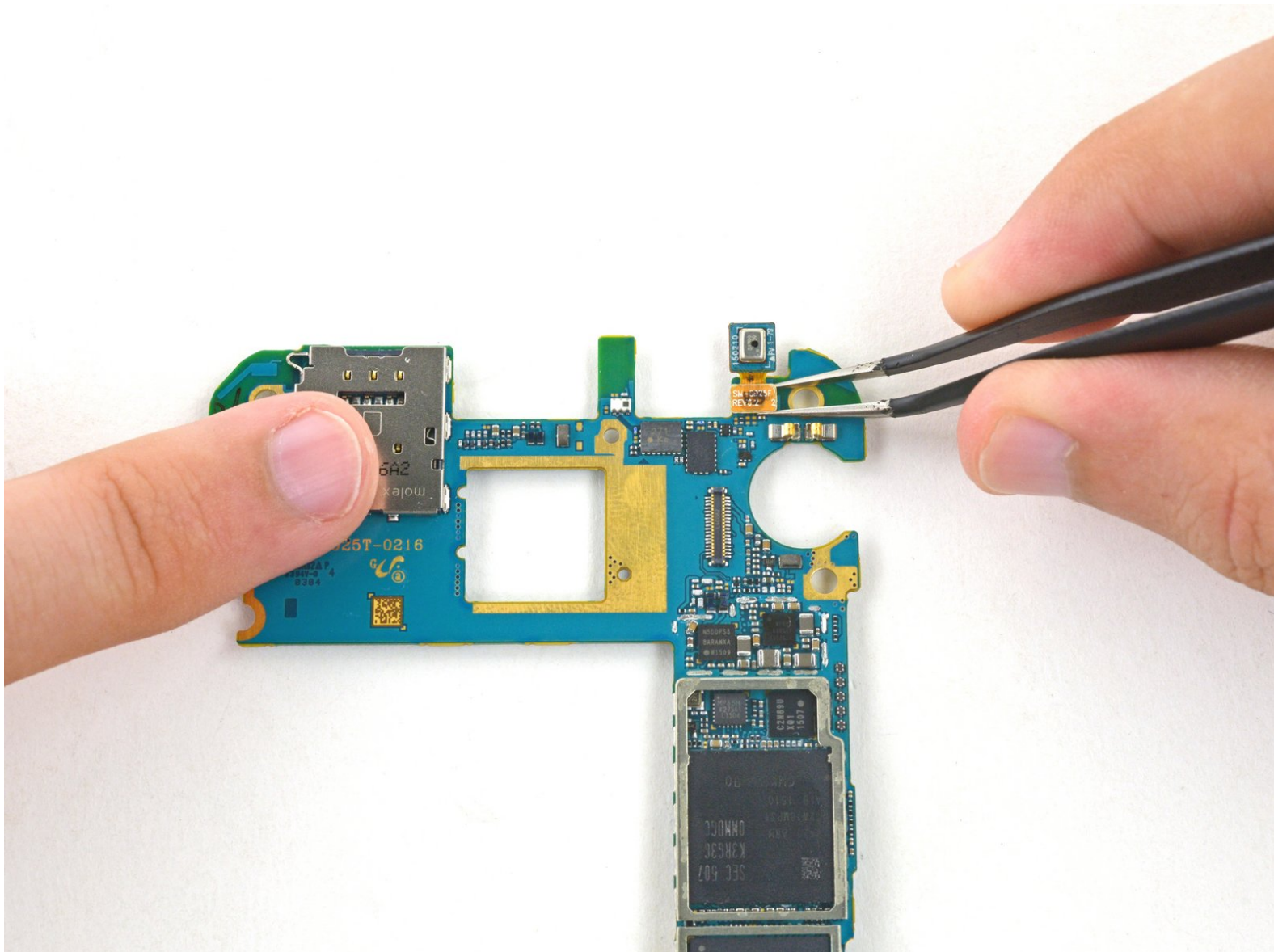




# Samsung Galaxy S6 Edge Motherboard Components Replacement

This is a prerequisite only guide.

Written By: Sam Goldheart



---

## INTRODUCTION

This is a prerequisite only guide, meant to be part of other guides.

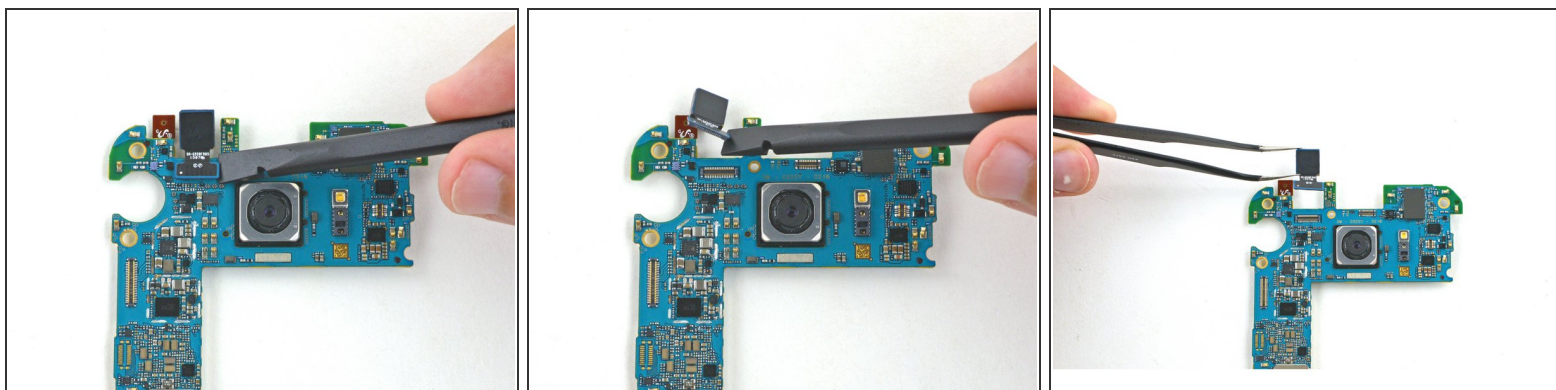
These steps include removing parts off of the motherboard.

---

### TOOLS:

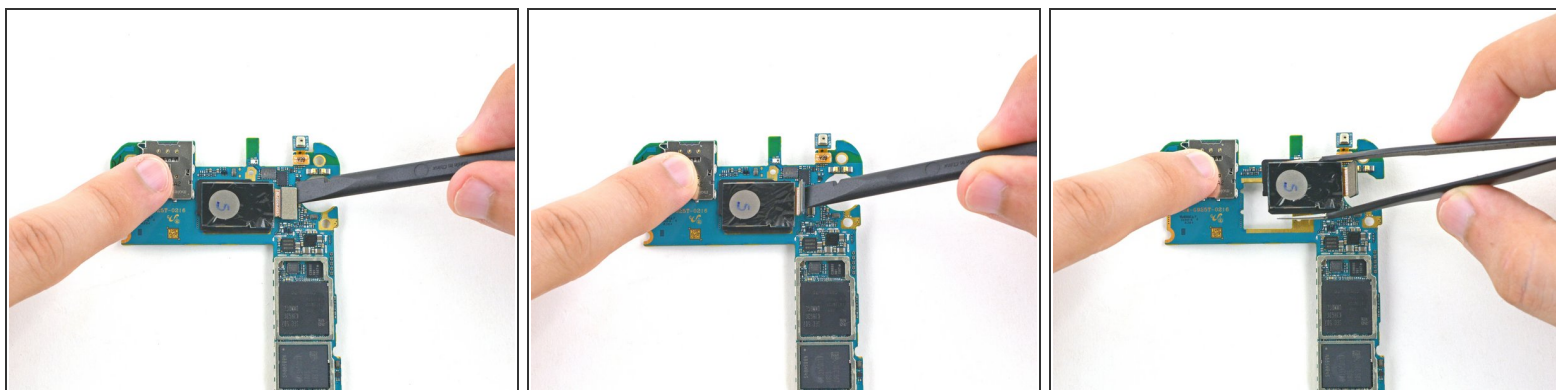
- [Spudger](#) (1)
  - [Tweezers](#) (1)
-

## Step 1 — Motherboard Components



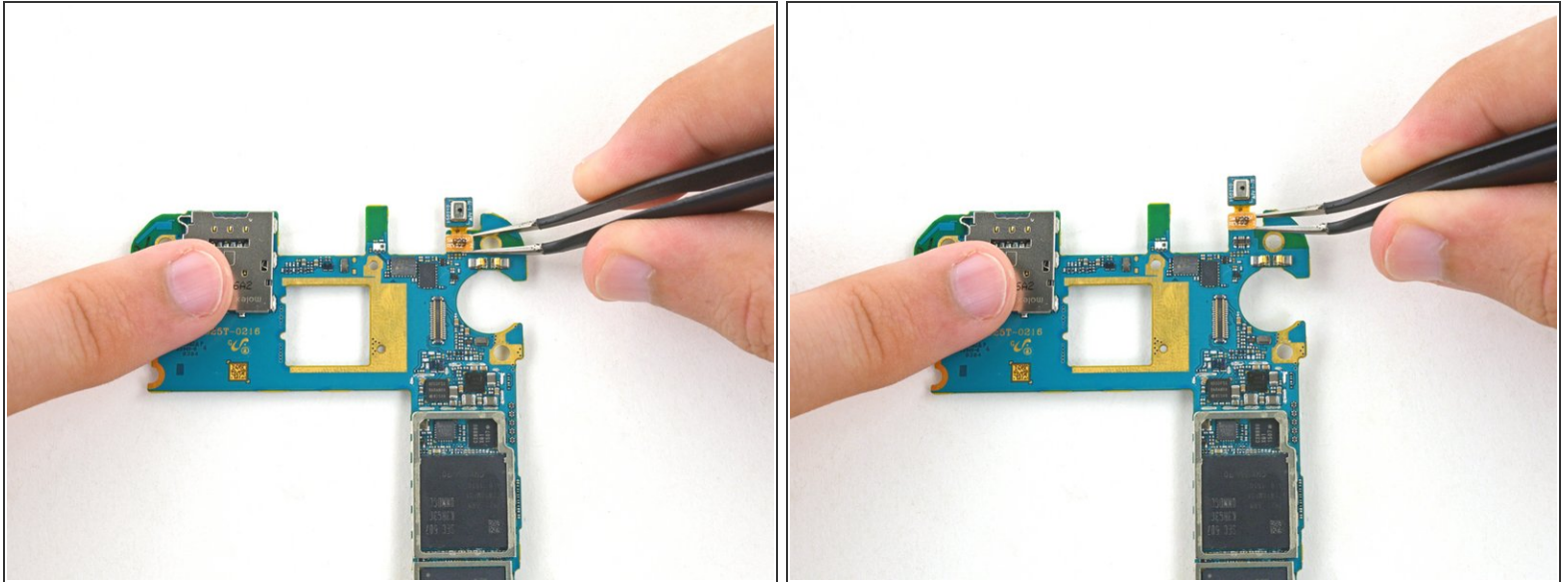
- Using the flat end of a spudger, pry up the front facing camera's connector.
- Carefully remove the front facing camera from the motherboard.

## Step 2



- Using a spudger, pry up the connector for the rear facing camera from the motherboard.
- Remove the rear facing camera from the motherboard.

### Step 3



- Remove the microphone from the motherboard.

To reassemble your device, follow these instructions in reverse order. Follow [this guide](#) to reinstall the rear glass.