

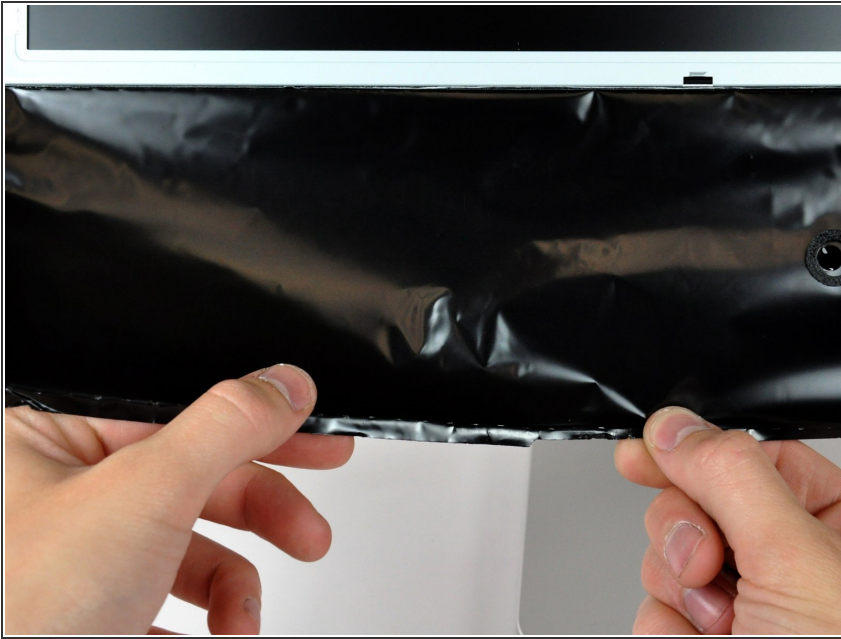


iMac Intel 20" EMC 2105 and 2118 Lower EMI Shield Replacement

Written By: Walter Galan



Step 1 — Lower EMI Shield



- Peel up the lower EMI shield from the rear case.
- ⓘ It is only necessary to peel the shield up from three sides. Leave it attached to the display.
- ⓘ If you happen to rip the EMI shield, use a piece of foil tape to cover the tear.

Step 2



- Tape the EMI shield to the face of the display to keep it out of the way.

To reassemble your device, follow these instructions in reverse order.