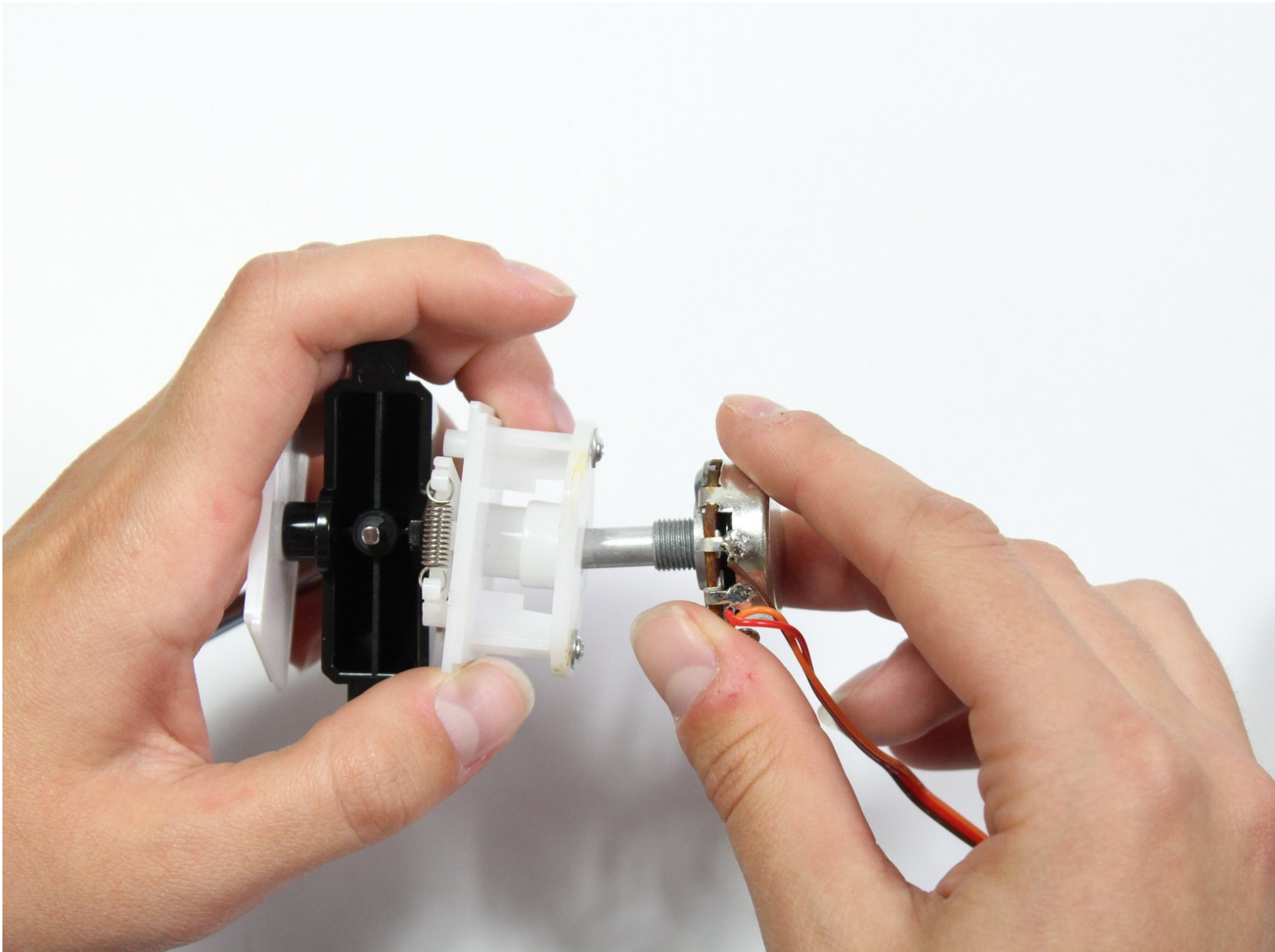




# RedOctane X-Plorer Whammy Bar Sensor Replacement

How to replace a RedOctane X-Plorer whammy bar sensor.

Written By: Riley



## INTRODUCTION

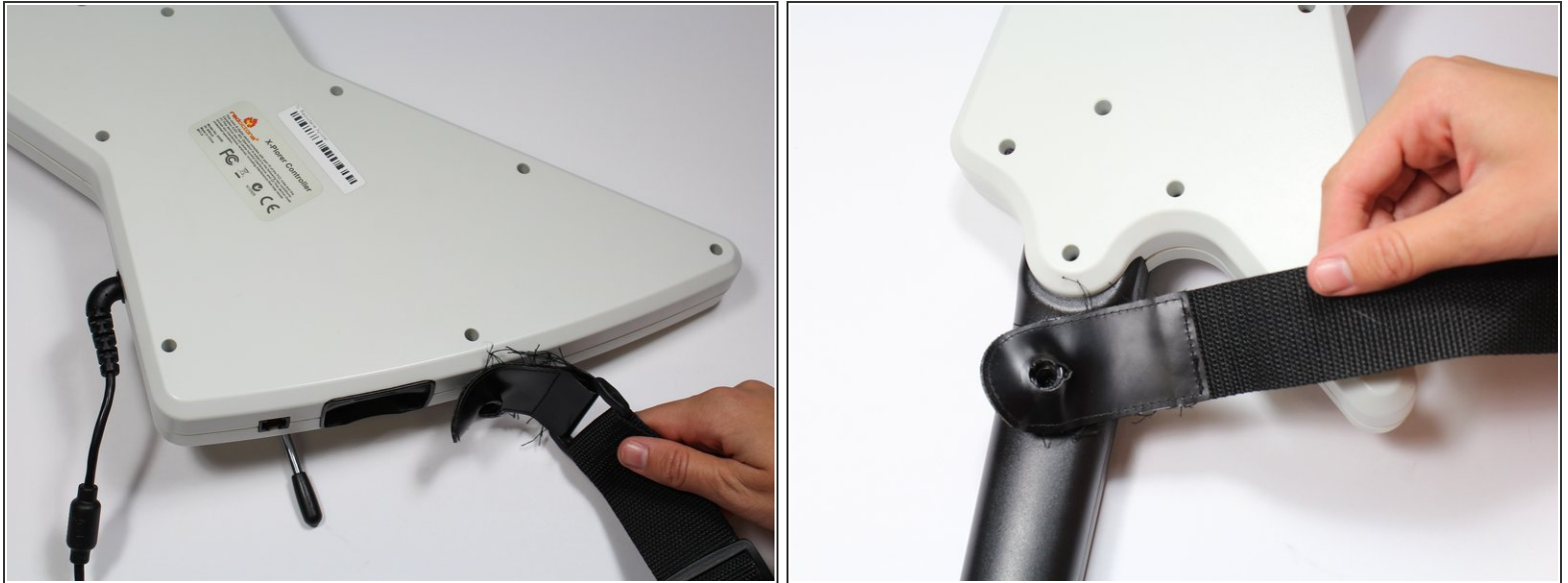
The whammy bar sensor is directly responsible for the performance of the whammy bar. This guide demonstrates how to remove the whammy bar sensor and diagnose issues with the whammy bar that were not obvious from its removal.

---

### TOOLS:

- [Phillips #1 Screwdriver](#) (1)
  - [Phillips #0 Screwdriver](#) (1)
-

## Step 1 — Rear Case



- Remove the strap by pulling it off of the mounts located on the body and neck.

## Step 2



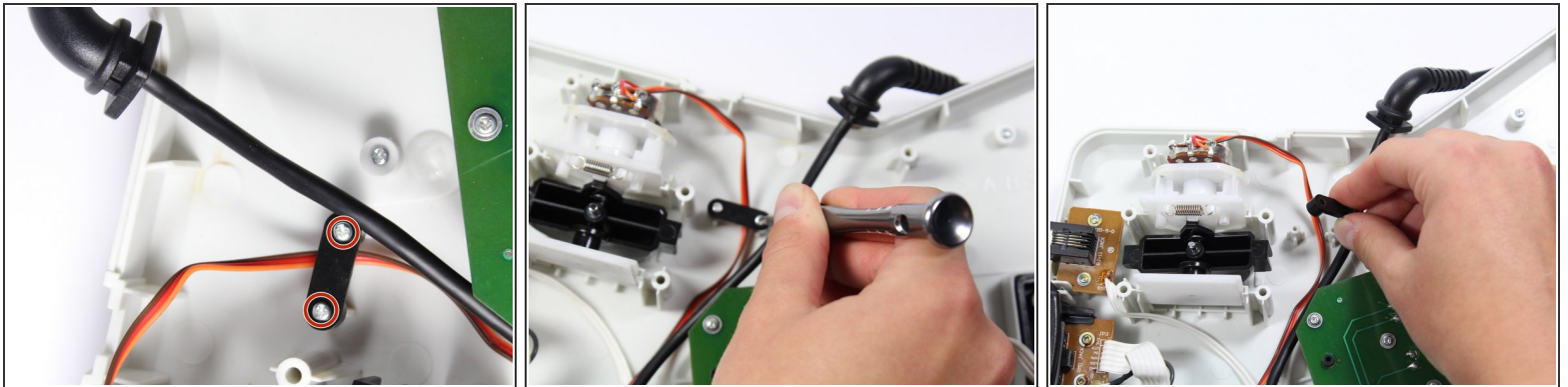
- Remove the nine 12mm Phillips #1 screws around the perimeter of the case with a screwdriver.
- Remove the two 15mm Phillips #1 screws connecting the body panel to the neck panel with a screwdriver.
- ⓘ These screws can also be Torx on some models.
- Pull off the rear case.

### Step 3



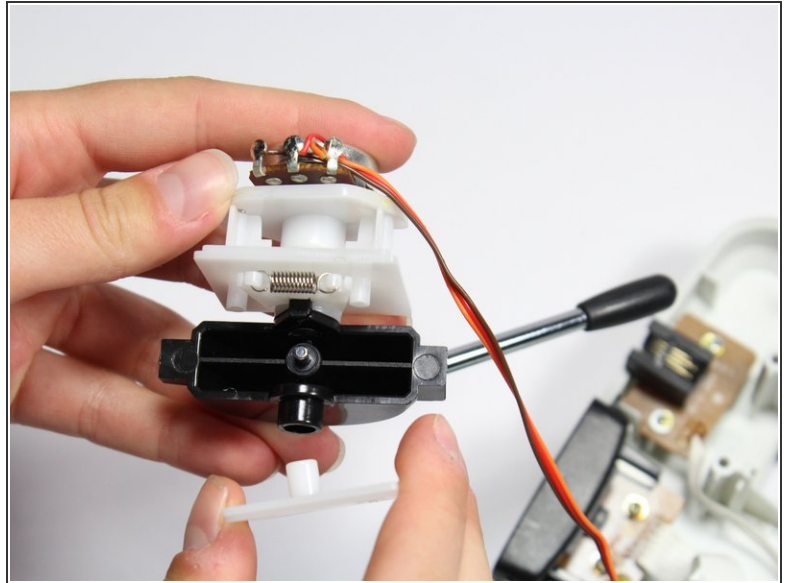
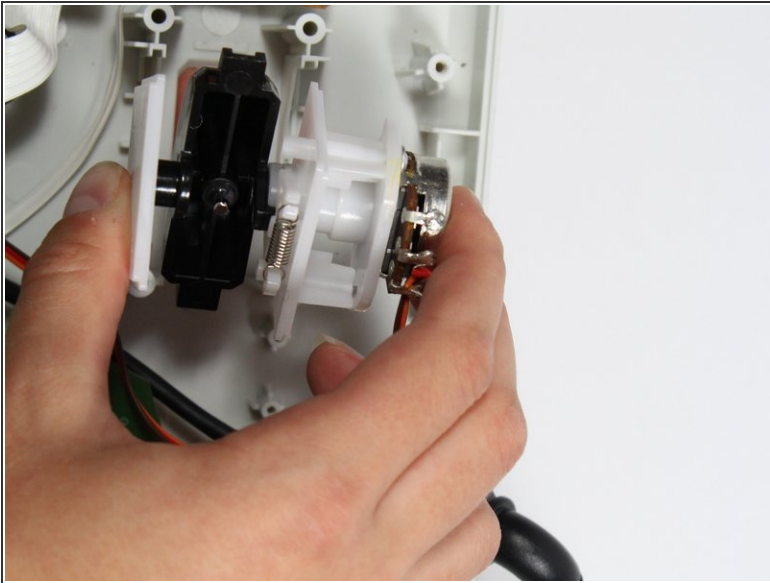
- Remove the five 12mm Phillips #1 screws along the neck with a screwdriver.
- Pull off the top shell of the neck to expose the internal features.

### Step 4 — Whammy Bar Sensor



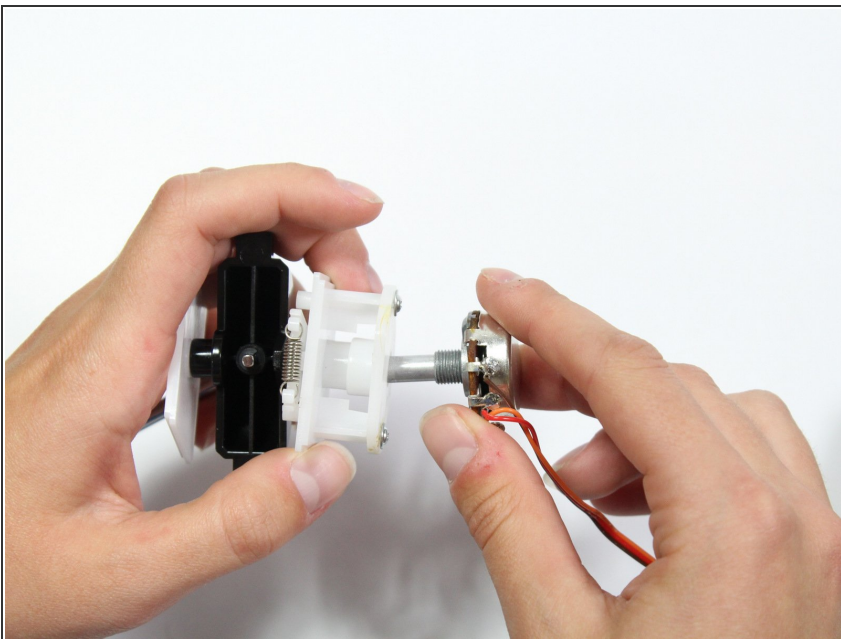
- Remove the two 7mm Phillips #0 screws.
- Using your fingers, remove the black wire retainer.

## Step 5



- Using one hand, remove the whammy bar and its attached components from the case.

## Step 6



- Using two hands, remove the whammy bar sensor.

To reassemble your device, follow these instructions in reverse order.