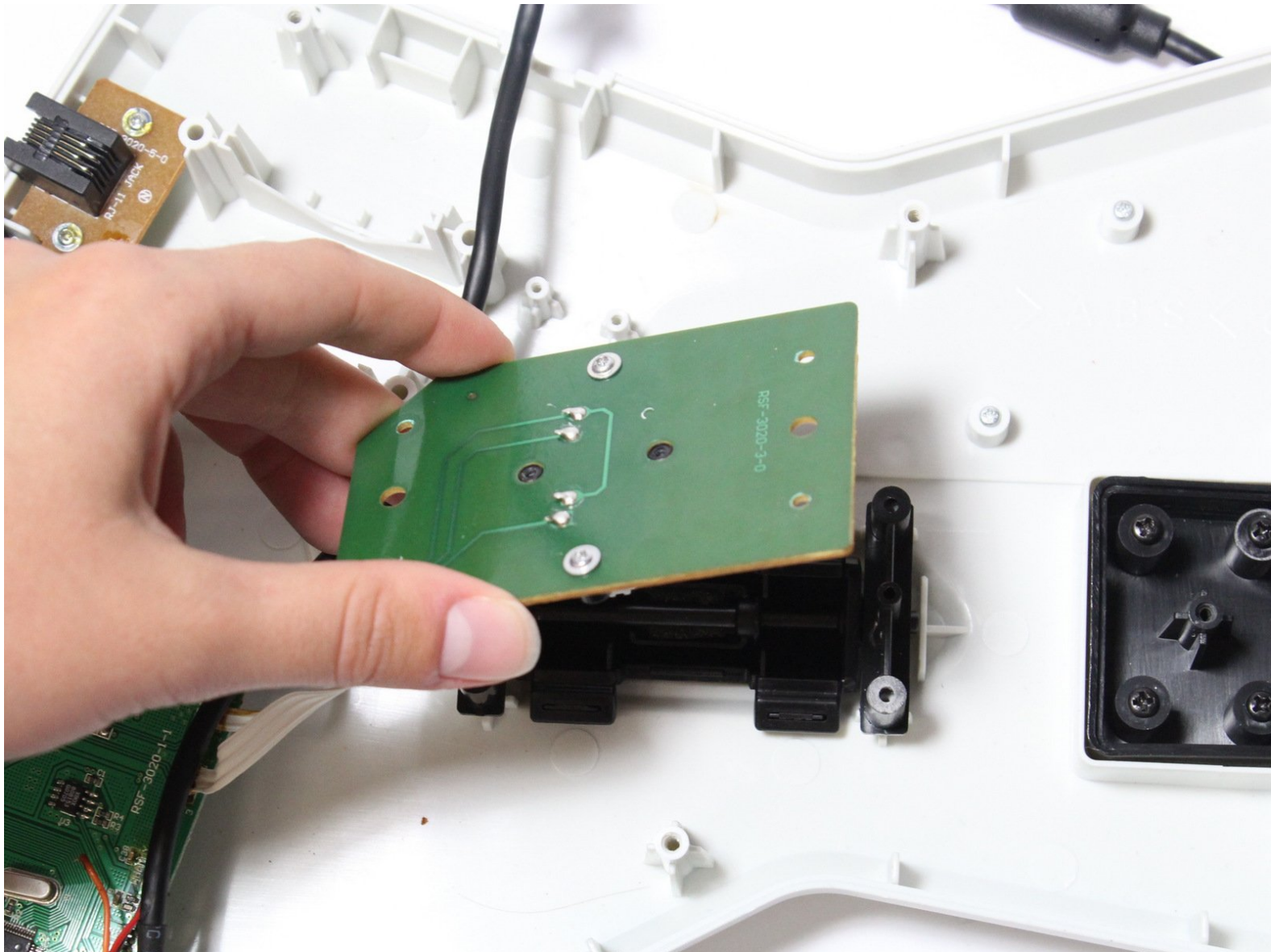




RedOctane X-Plorer Strum Bar Sensor Board Replacement

This guide will show you how to replace the strum bar sensor board on the RedOctane X-Plorer.

Written By: Riley



INTRODUCTION

The strum bar sensor board will often wear and stop working over time due to overuse. This guide demonstrates how to replace the strum bar sensor board.

TOOLS:

- [Phillips #1 Screwdriver](#) (1)
-

Step 1 — Rear Case



- Remove the strap by pulling it off of the mounts located on the body and neck.

Step 2



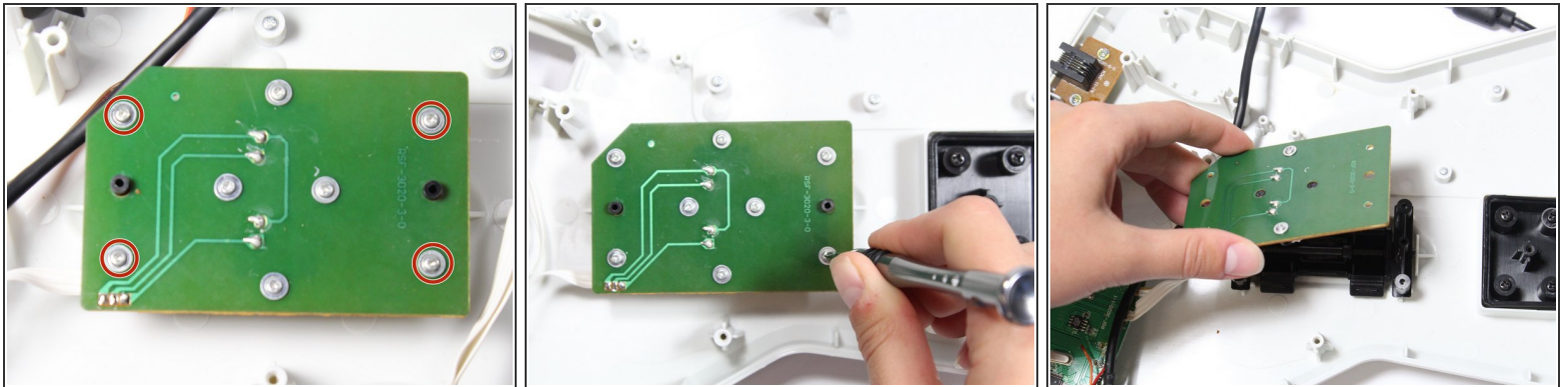
- Remove the nine 12mm Phillips #1 screws around the perimeter of the case with a screwdriver.
- Remove the two 15mm Phillips #1 screws connecting the body panel to the neck panel with a screwdriver.
- ⓘ These screws can also be Torx on some models.
- Pull off the rear case.

Step 3



- Remove the five 12mm Phillips #1 screws along the neck with a screwdriver.
- Pull off the top shell of the neck to expose the internal features.

Step 4 — Strum Bar Sensor Board



- Use a screwdriver to remove the four 14mm Phillips #1 screws around the perimeter of the strum bar sensor board.
- Lift up on the strum bar sensor board to remove it from the case.

To reassemble your device, follow these instructions in reverse order.

This document was last generated on 2019-07-16 04:07:10 PM.