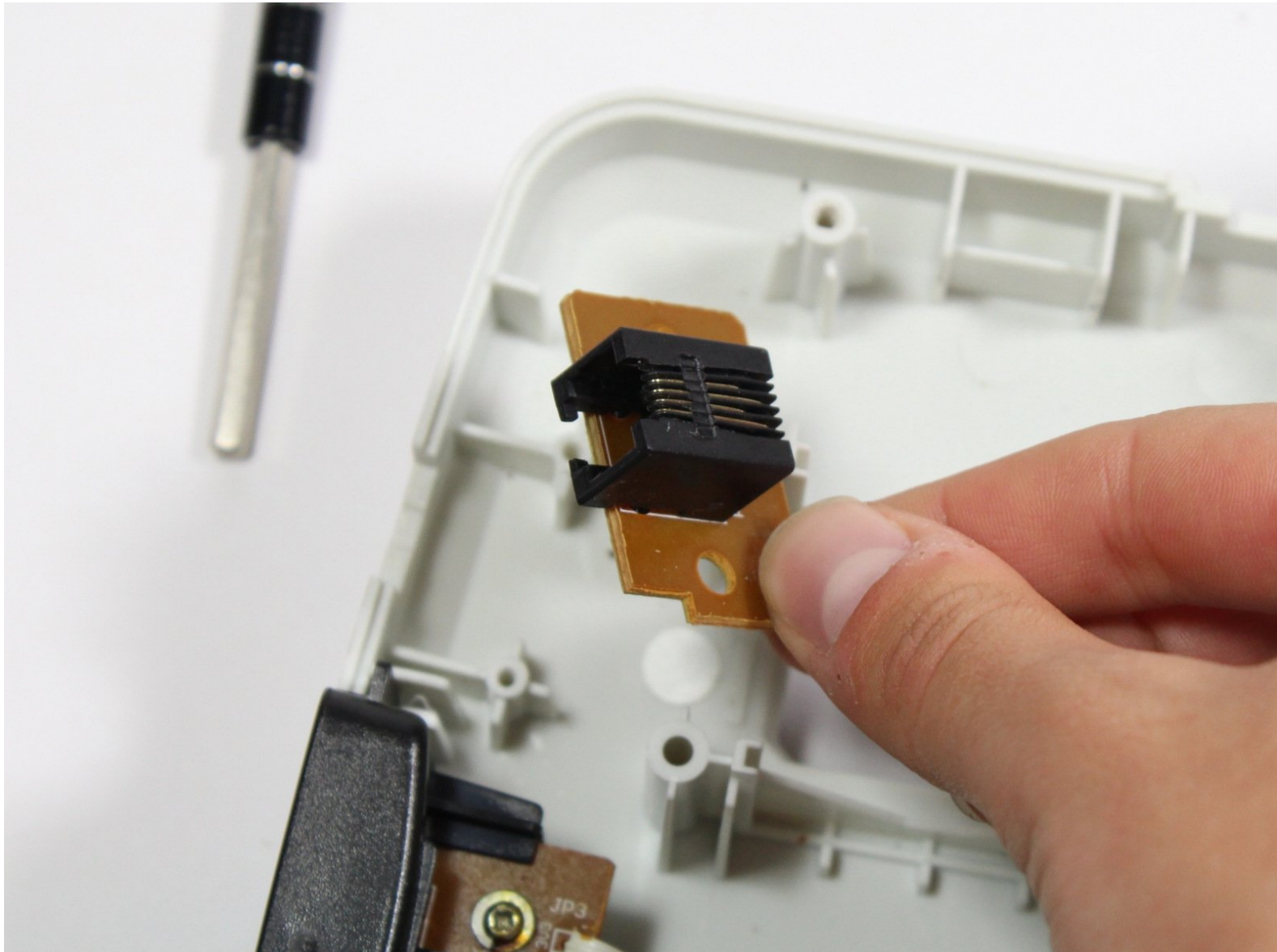




RedOctane X-Plorer Ethernet Port Replacement

This guide will show you how to replace the Ethernet port on the RedOctane X-Plorer.

Written By: Riley



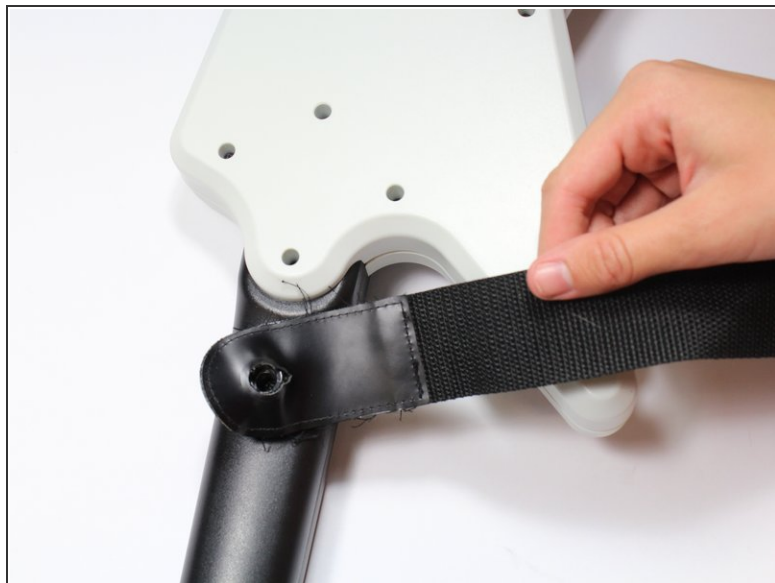
INTRODUCTION

The Ethernet port is designed to connect to pedals that do not come with the device. This guide will show you how to replace the Ethernet port located at the bottom of the guitar.

TOOLS:

- [Phillips #1 Screwdriver](#) (1)
-

Step 1 — Rear Case



- Remove the strap by pulling it off of the mounts located on the body and neck.

Step 2



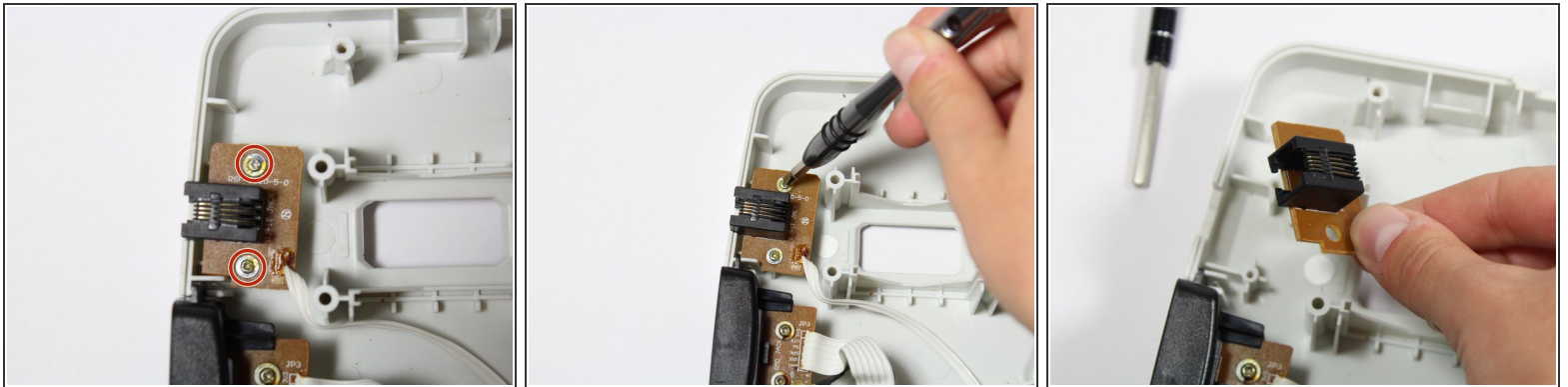
- Remove the nine 12mm Phillips #1 screws around the perimeter of the case with a screwdriver.
- Remove the two 15mm Phillips #1 screws connecting the body panel to the neck panel with a screwdriver.
- ⓘ These screws can also be Torx on some models.
- Pull off the rear case.

Step 3



- Remove the five 12mm Phillips #1 screws along the neck with a screwdriver.
- Pull off the top shell of the neck to expose the internal features.

Step 4 — Ethernet Port



- Remove the two 10mm Phillips #1 screws from the Ethernet connector board.
- Lift the Ethernet connector to remove it from the case.

To reassemble your device, follow these instructions in reverse order.

This document was last generated on 2019-07-21 08:34:19 PM.