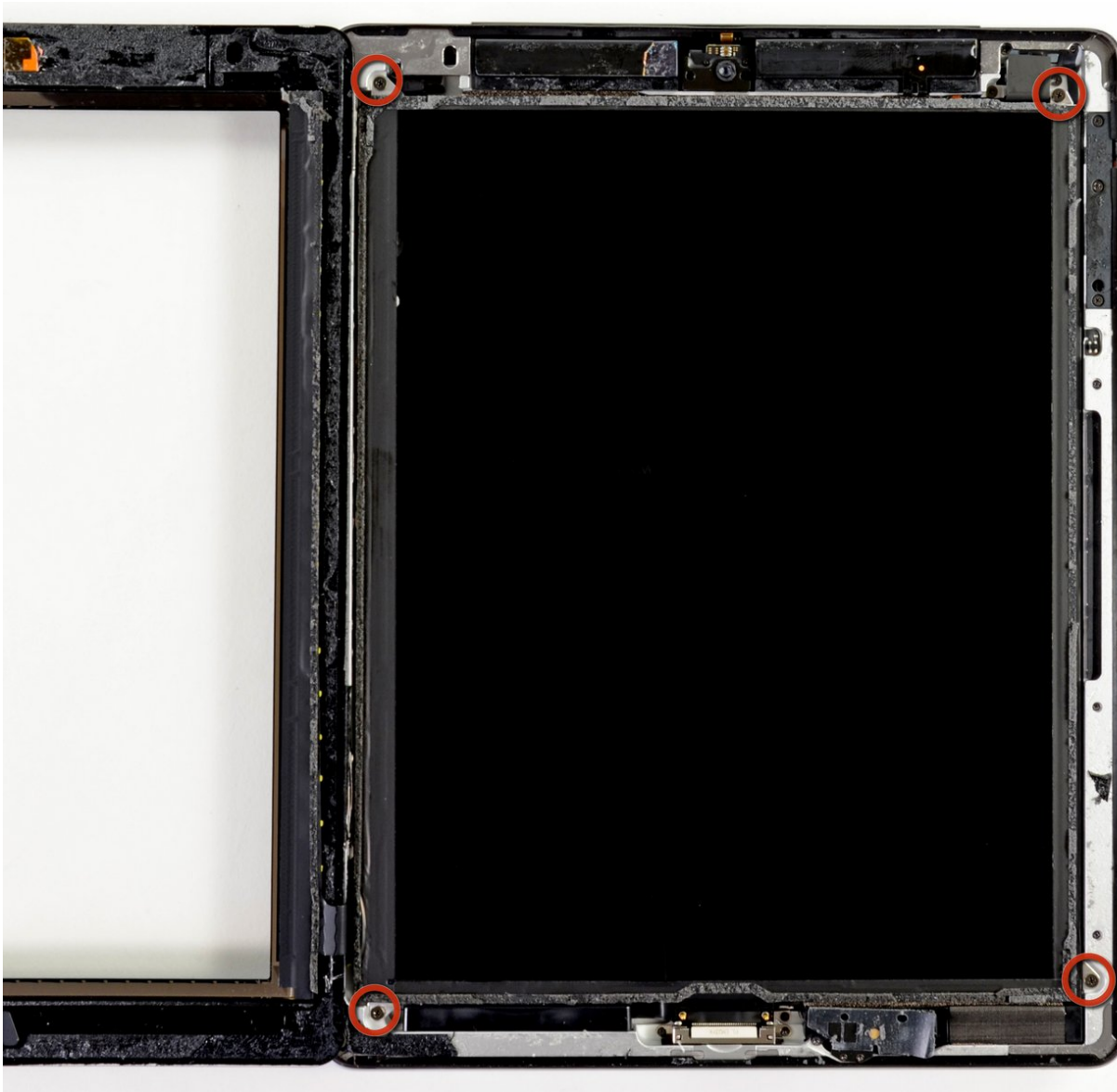




iPad 3 4G Front Panel Assembly Replacement

Preq for removing the front panel. Specific to the iPad 3, also involves moving the LCD over.

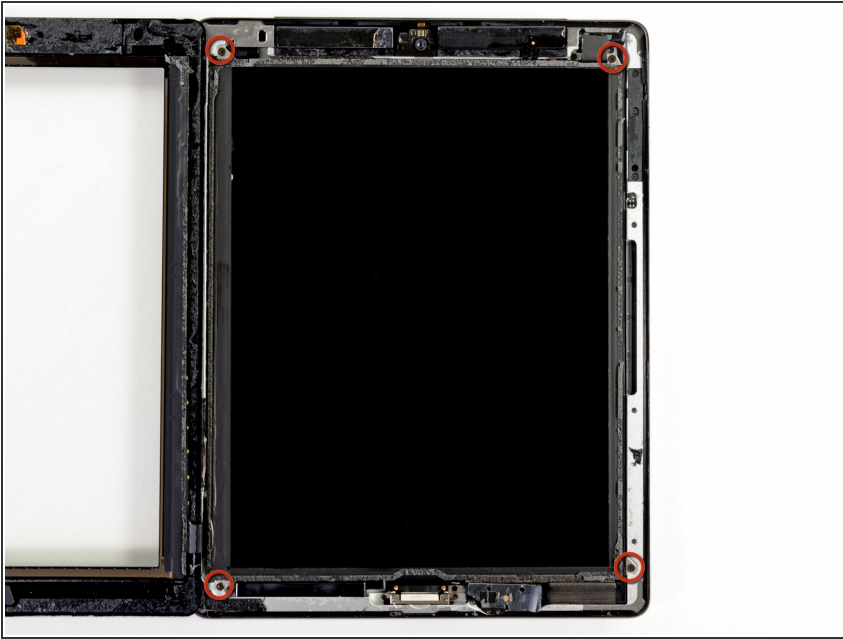
Written By: Brett Hartt



 **TOOLS:**

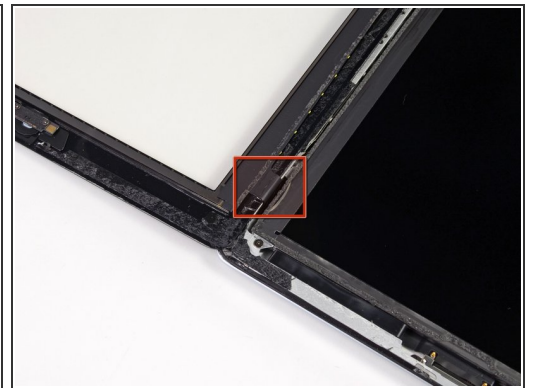
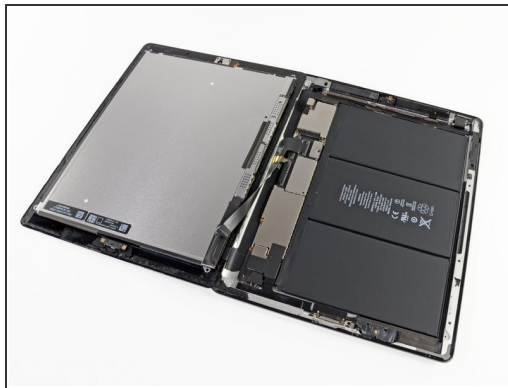
- Phillips #00 Screwdriver (1)
 - Spudger (1)
-

Step 1 — Front Panel Assembly



- Remove the four 2 mm Phillips #00 screws securing the LCD to the aluminum frame.

Step 2



- Using a plastic opening tool or a spudger, lift the right edge of the LCD out of the iPad.
- Rotate the LCD along its left edge and lay it down on top of the front panel.
 - ⚠ Be careful as you move the LCD. The ribbon cable is fragile and may break if it is flexed too much.

To reassemble your device, follow these instructions in reverse order.