



Toshiba Satellite C855-S5115 Keyboard Replacement

If your keys are stuck or not typing correctly, a keyboard replacement may be the best option for you.

Written By: Claire Fletcher



INTRODUCTION

Sticking and broken keys means it might be time for a new keyboard. This guide will show you how to remove and replace you Toshiba's keyboard.

TOOLS:

- [Spudger](#) (1)
 - [iFixit Opening Tools](#) (1)
-

Step 1 — Battery



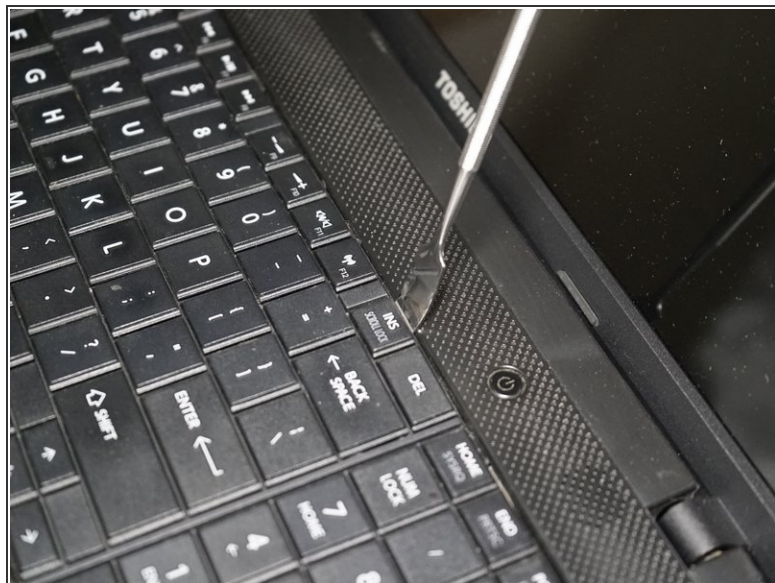
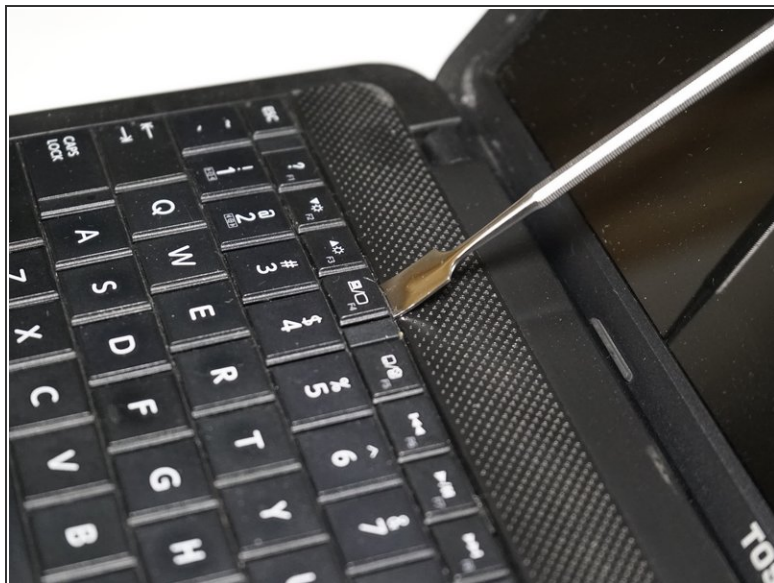
- Use two fingers to pull the ridged lock tabs on the bottom of the computer toward the edges. This will unlock the battery.

Step 2



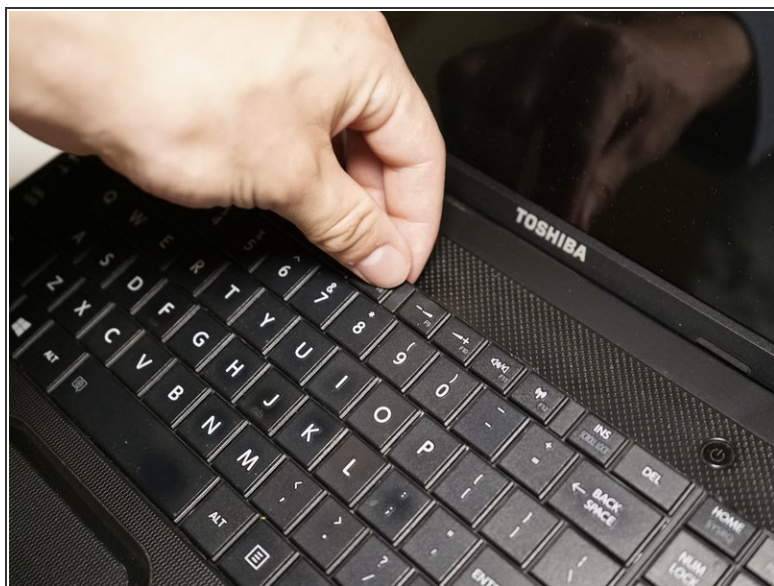
- Holding the left tab in place, use the groove located between the two tabs to pry the battery up and out.

Step 3 — Keyboard



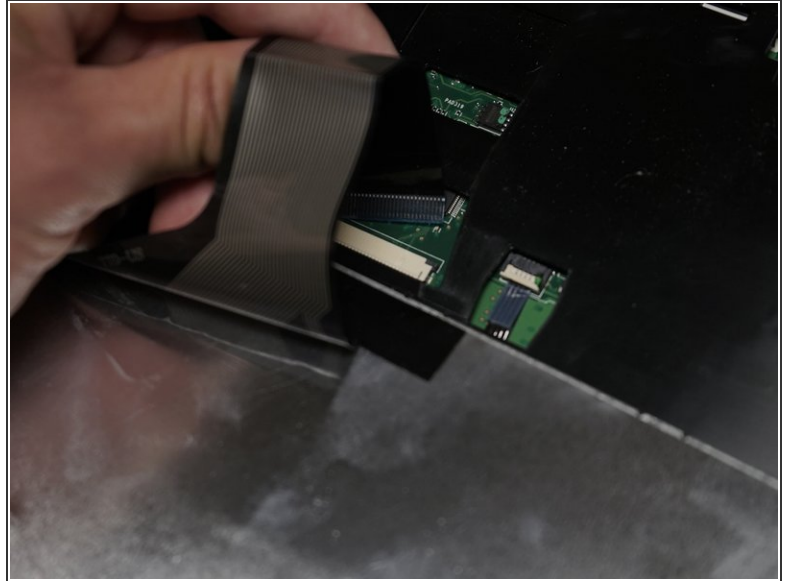
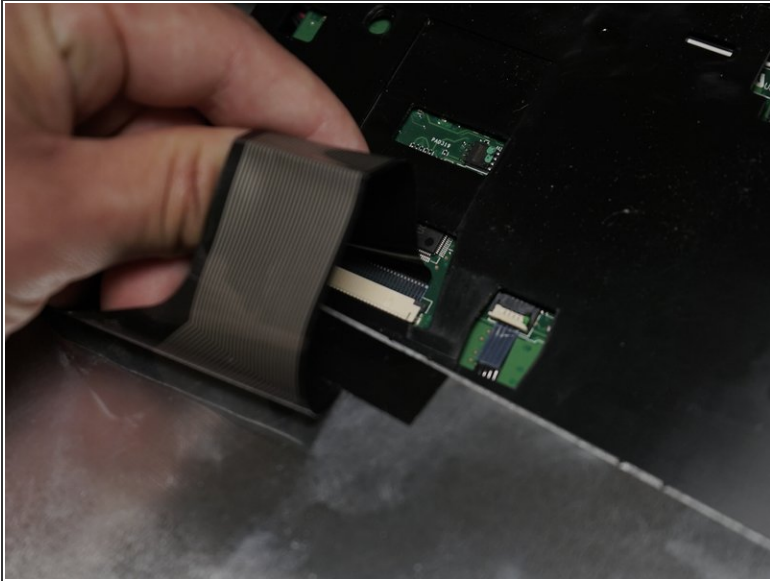
- Carefully separate the keyboard from its assembly by pulling it out with the opening tool.

Step 4



- Pull out the keyboard gently and fold it backwards.

Step 5



- Pull out the connector attaching the keyboard to the main body of the laptop.

To reassemble your device, follow these instructions in reverse order.