



Samsung Galaxy Tab S3 Display Replacement

How to replace the display assembly on the Samsung Galaxy Tab S3.

Written By: Jelly Romero



INTRODUCTION

Use this guide to replace a cracked or malfunctioning display on your Samsung Galaxy Tab S3 tablet (identified with model number SM-T820).

The display assembly is the output component to present information and is made up of the glass panel, digitizer, and AMOLED display sandwiched together. Your display may need to be [replaced](#) if the glass cracks or is broken because this will affect its touch screen capabilities. It could also experience something called "[screen burn-in](#)" that happens on AMOLED displays. "Screen burn-in" is when some of the individual light-emitting pixels powering the display will dim the more they are used, causing uneven lighting and colors.

In step 1 of this guide, you will need to use the iOpener, which is a microwavable heating tool used to loosen adhesive attached to the display. Carefully follow the [iOpener heating instructions](#) to avoid burning yourself. If your display is shattered, follow [this guide](#) to reinforce your screen to avoid injury until you replace the display. Make sure to power off your laptop completely and disconnect from any external power source prior to beginning this guide.

TOOLS:

- [Microwave](#) (1)
- [iOpener](#) (1)
- [iFixit Opening Tools](#) (1)
- [Spudger](#) (1)
- [Plastic Cards](#) (1)

PARTS:

- [Galaxy Tab S3 9.7 Screen](#) (1)

Step 1 — Display



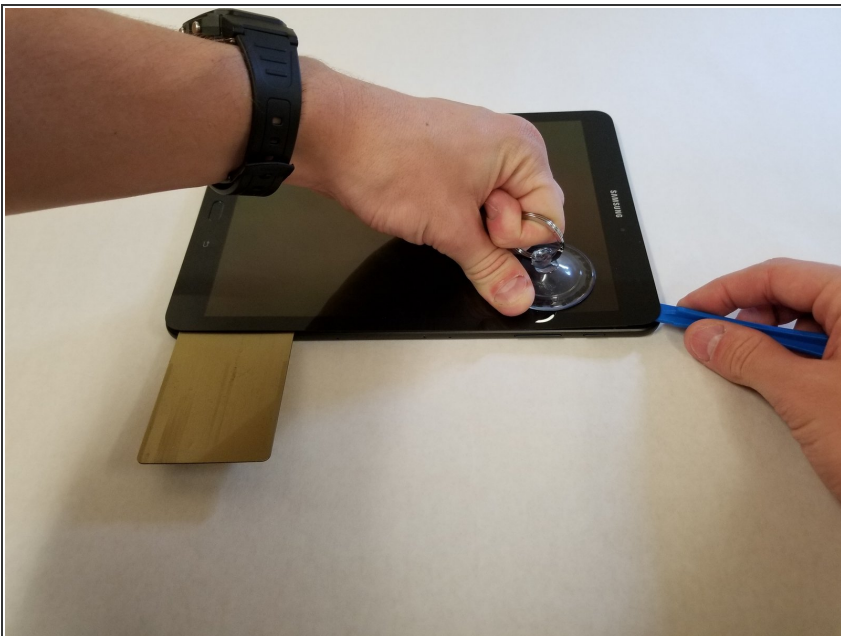
- To soften the adhesive holding the tablet together, heat up the edges of the glass panel using a heated **iOpener** on the edge of the device.
 - We used two **iOpeners** to open up the tablet. The process is doable with a single **iOpener**, but would take substantially longer. Alternatively, you can use a heat gun to quickly loosen the adhesive.
 - Leave the **iOpener** on edge for two minutes.
- i** Be careful not to burn yourself while handling the hot **iOpener**. For more information on the **iOpener**, use the [iOpener Instructions Guide](#).

Step 2



- Place a **suction cup** near edge that you heated up with the **iOpener**.
 - Press down on the **suction cup** to create a seal, and pull up with force to create a separation between the display and the midframe.
 - Use an **opening tool** to split apart the glass panel from the midframe.
- ⚠ Be careful to not break the glass when prying from the frame.

Step 3



- As you continue along the edge using the **opening tool**, use a **plastic card** to keep the glass separate from the midframe.
- ★ You can also use multiple **opening picks** instead of a **plastic card**.

Step 4



⚠ As you remove the glass panel, be careful not to tear the ribbon connecting the motherboard to the display.

- Pull off the glass panel using the **suction cup**.
- Carefully disconnect the ribbon connecting the display assembly to the motherboard. You can disconnect this ribbon from either end.

Step 5



- Repeat steps 3 through 7 to remove the rear glass panel on the opposite side of the device.

To reassemble your device, follow these instructions in reverse order. If you have removed too much adhesive, you may need to apply more during the reassembly process.