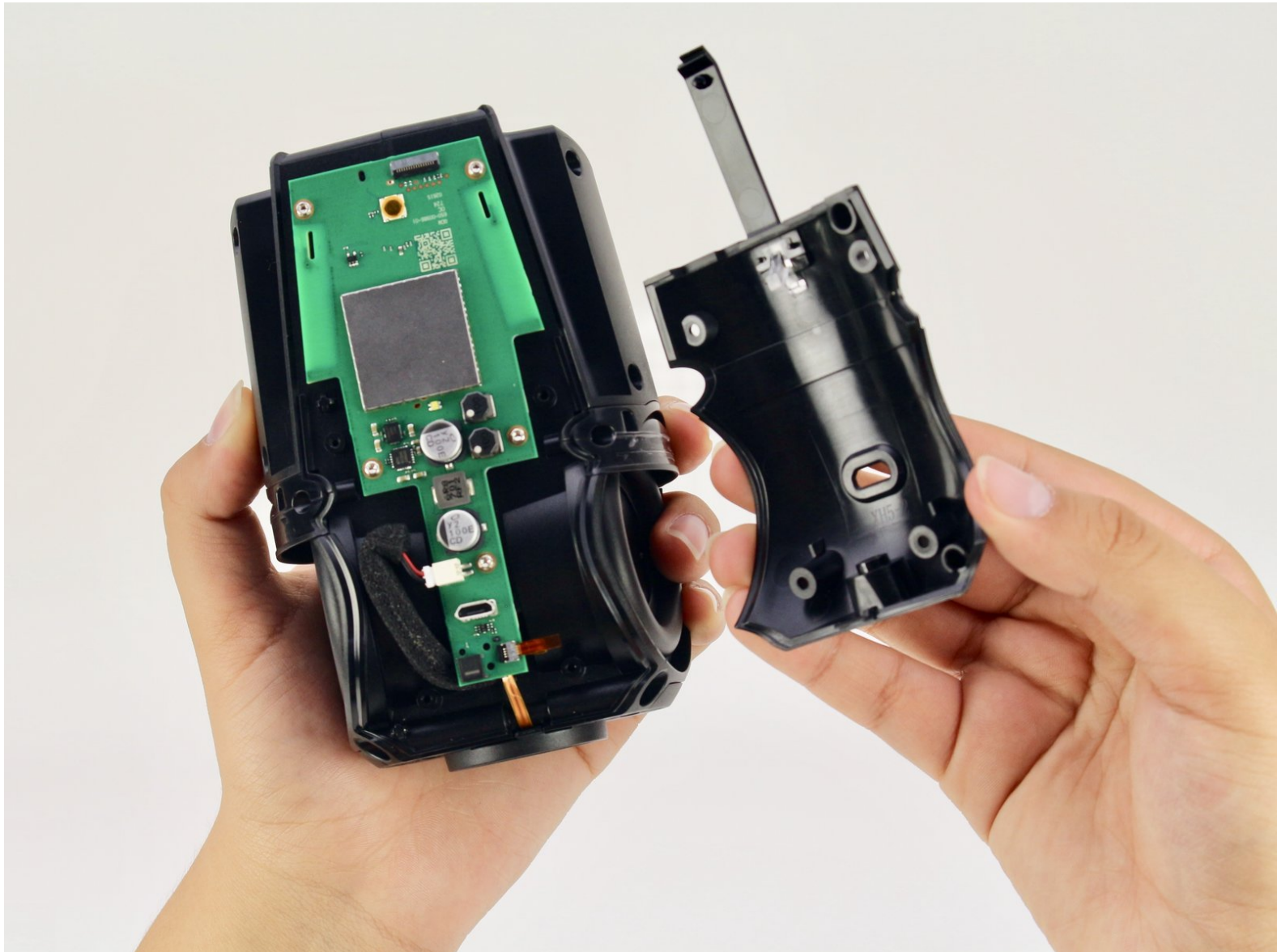




Google Home Mute Button Switch Replacement

This guide will teach you how to replace the mute button switch for your Google Home.

Written By: Gabe Hyun



INTRODUCTION

This guide will teach you how to replace a faulty mute button switch in your Google Home with a new one.

TOOLS:

- [T6 Torx Screwdriver](#) (1)
 - [Tweezers](#) (1)
 - [Pro Tech Toolkit](#) (1)
-

Step 1 — Interconnect Cable



⚠ Removing the lid too quickly could cause you to tear the interconnect cable that attaches the base to the top of the lid.

- Pull off the Google Home's magnetically attached base and set it aside.
- Using a Torx T6 screwdriver head, unscrew the four 1.7mm Torx screws deep in the speaker recess so that you can remove the lid.
- After all four screws are out, pop the lid off the device to open the capsule.

Step 2



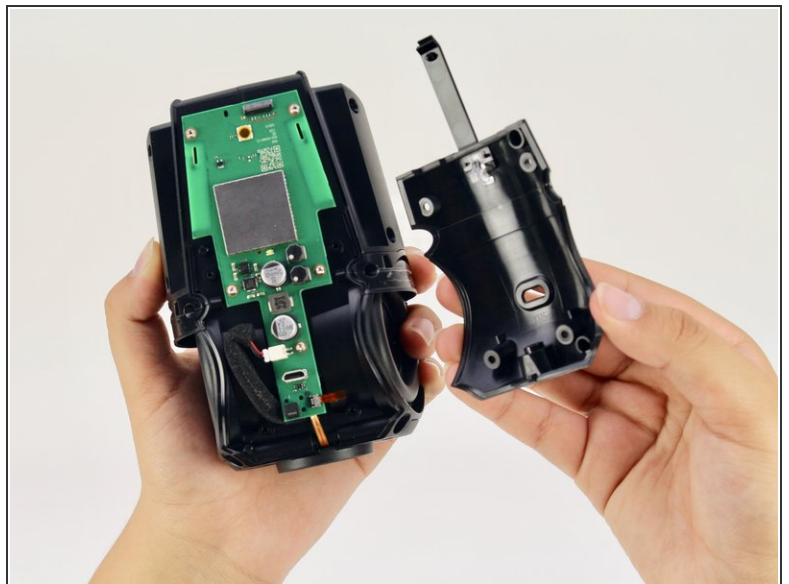
- Carefully remove the interconnect cable using a pair of tweezers.

Step 3 — Mute Button Switch



- Remove the 'O-ring' that wraps around the device holding the switch panel in place.

Step 4



- Using a Torx T6 screwdriver head, unscrew the four black 1.7mm Torx screws.
- Remove the panel and the mute button switch. If done correctly you should now be able to see the device's guitar-shaped motherboard.

To reassemble your device, follow these instructions in reverse order.