



Jam Voice Hard Mesh Cover Replacement

Remove or replace the top covering or hard speaker mesh of the Jam Voice.

Written By: Alex



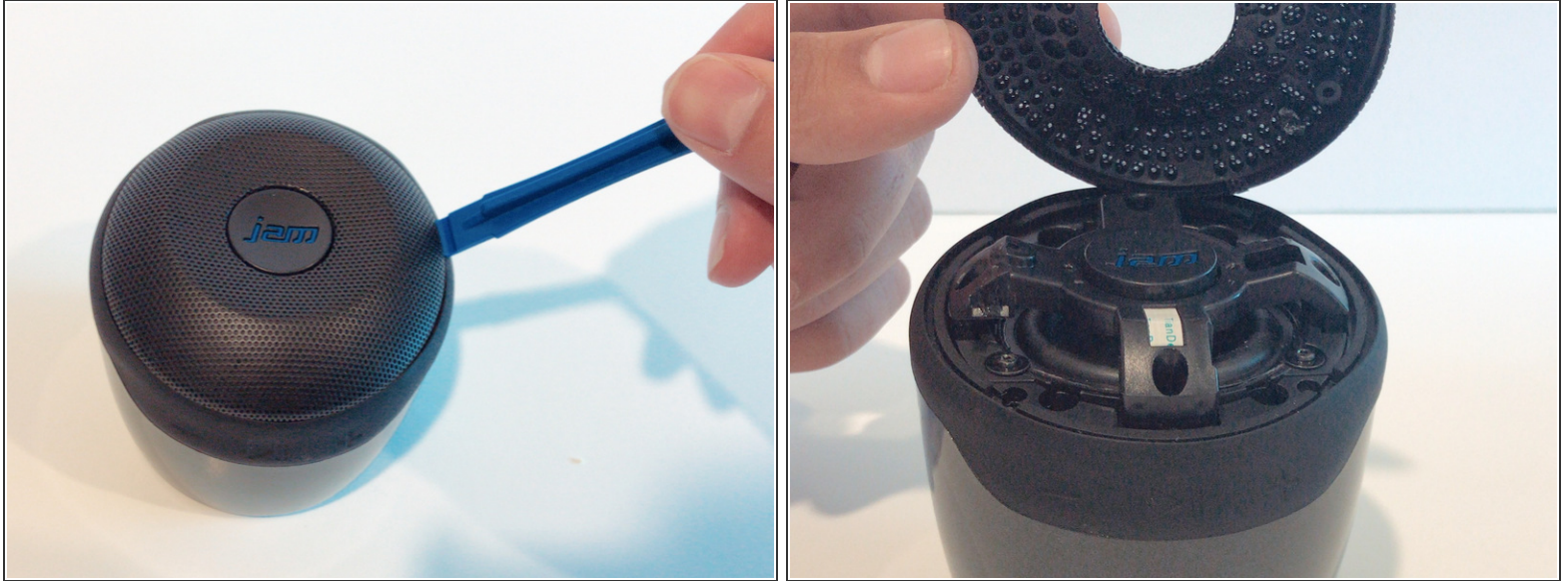
INTRODUCTION

In order to gain access to the inside of the Jam Voice, the top cover must be removed. The top covering may be damaged and in need of replacement.

TOOLS:

- [iFixit Opening Tools](#) (1)
-

Step 1 — Hard Mesh Cover



- Insert the plastic opening tool underneath the mesh top.
 - Pry the cover open.
- To reattach the cover, simply align the round posts on the bottom of the cover back into the holes of the Jam Voice.

To reassemble your device, follow these instructions in reverse order.

This document was last generated on 2018-07-03 11:30:32 AM.