



# LG env2 vx9100 Back Panel Replacement

This guide describes the steps required to remove and install the back cover.

Written By: Reed Williston



---

## INTRODUCTION

In this guide you will be removing the back panel from the rest of the phone.

---

### TOOLS:

- [Phillips #0 Screwdriver](#) (1)
  - [Spudger](#) (1)
-

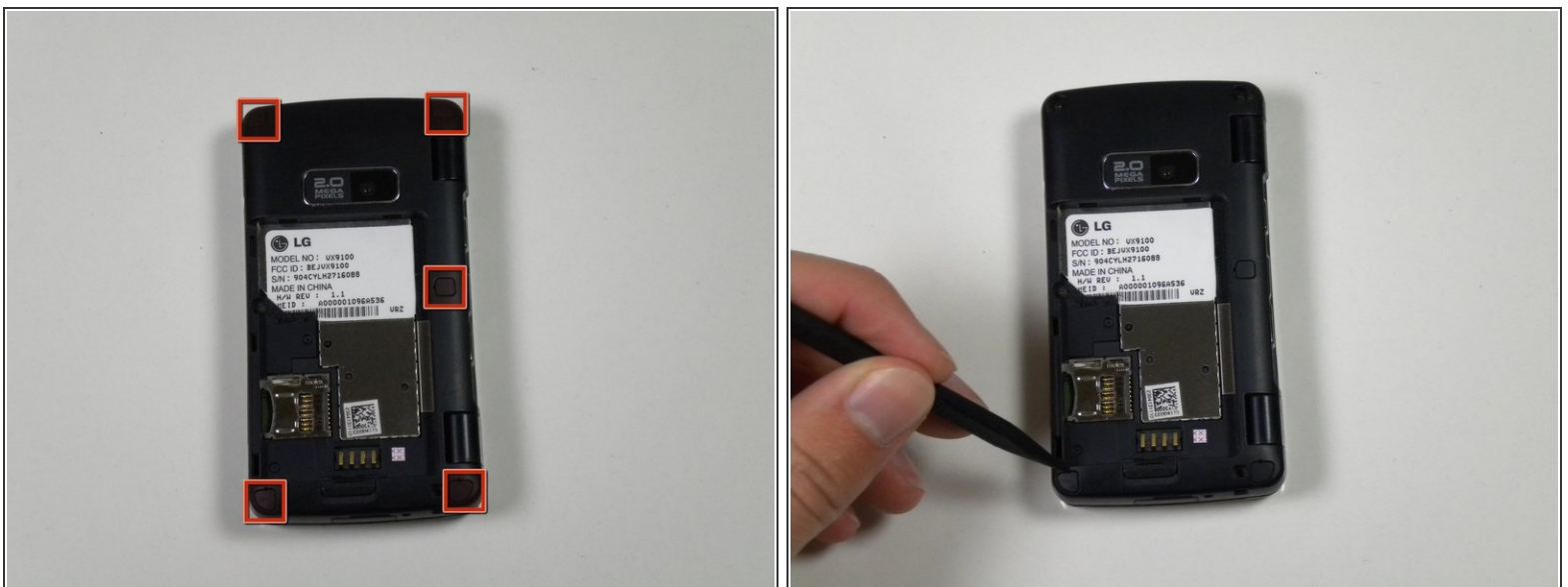
## Step 1 — Battery



**⚠** Before disassembling your phone, be sure it is powered off to avoid minor electric shock or possible fire.

- Place the phone facedown on the table.
- Use your fingernail (or a small screw driver) to pull down the tab below the battery.
- Lift the battery out.

## Step 2 — Back Panel



- Locate the five rubber covers on the back panel of the phone.
- Use the metal probe to pop out each rubber cover to reveal the screws underneath.

### Step 3



- Locate the six 2.5mm screws on the back panel of the phone.
- Use a #00 Phillips screwdriver to remove each 2.5mm screw.

## Step 4



- Locate the seam around the edge of the phone.
- Insert the plastic opening tool into the seam and pry gently to release the tabs.
- Work your way around the phone until all tabs are released.
- Remove the back panel of the phone.

To reassemble your device, follow these instructions in reverse order.

This document was last generated on 2019-07-17 02:04:40 AM.